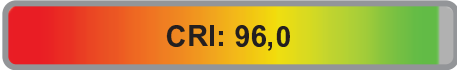


Light efficiency:



Light quality:



Color temperature:



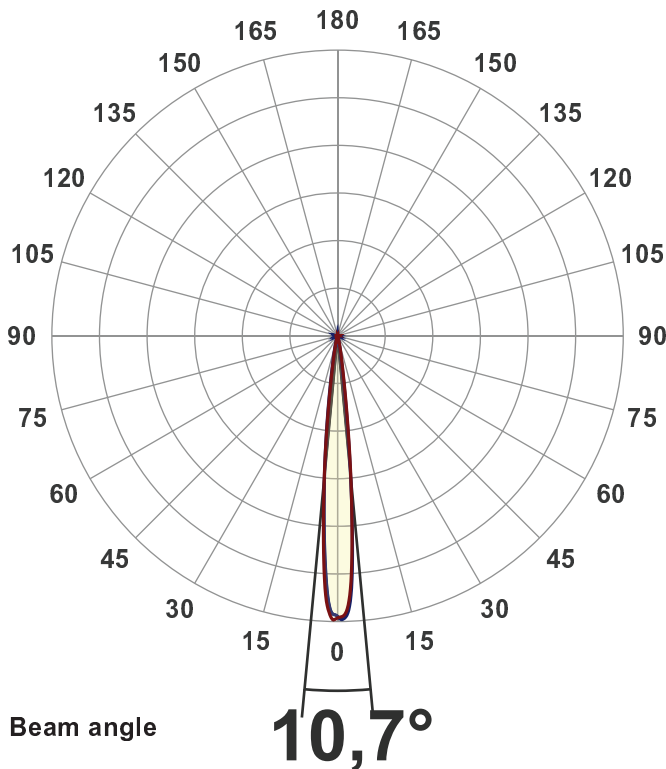
Output: 2887 lm
Peak: 61976 cd
Power: 41,4 W
PF: 1,0



Product name:
BB&S-CBL1-VNSP-2700K
 Item number:
BB&S-CBL1-VNSP-2700K
 Date and time:
01-08-2018 13:14:59
 Description:
VNSP - 2700 Spotlight

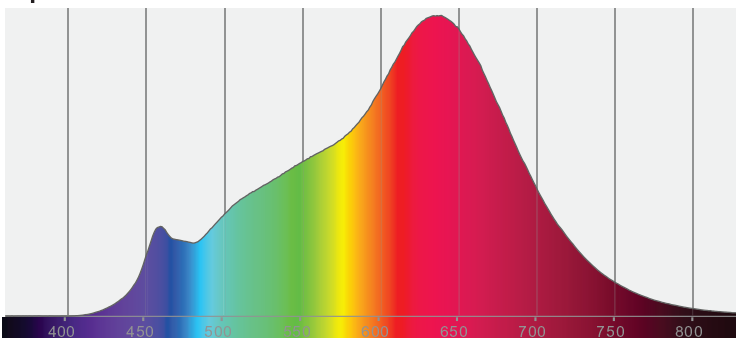
Measured at Ingemann Components by
 Jakob D. Jepsen

Measured in 8 planes to take into
 account for any stray lighting.

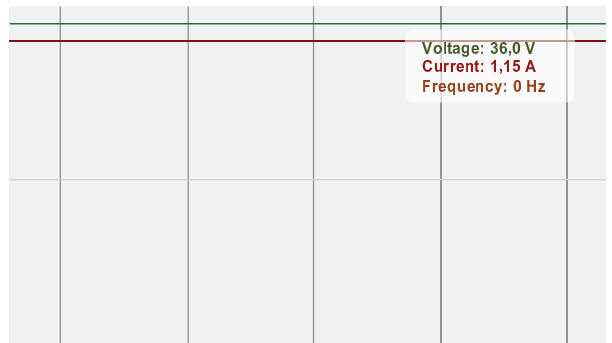


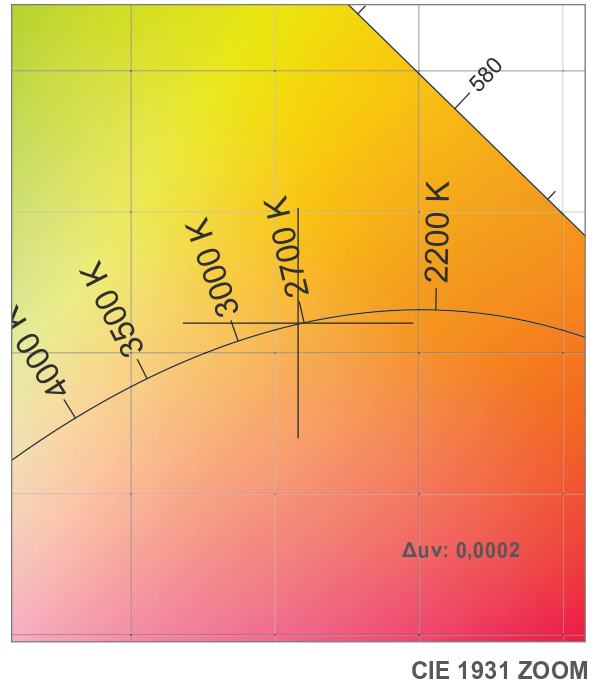
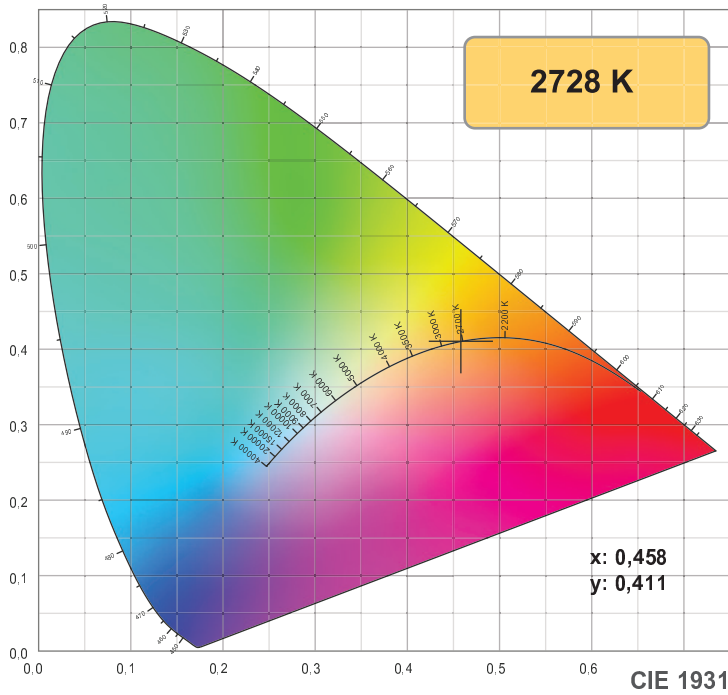
CIE 1931
 x: 0,458
 y: 0,411

Spectra

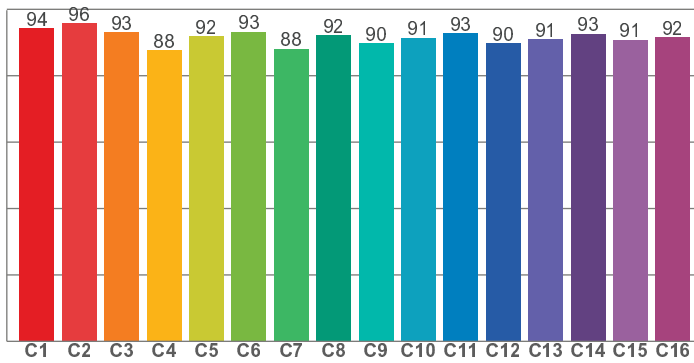


Power

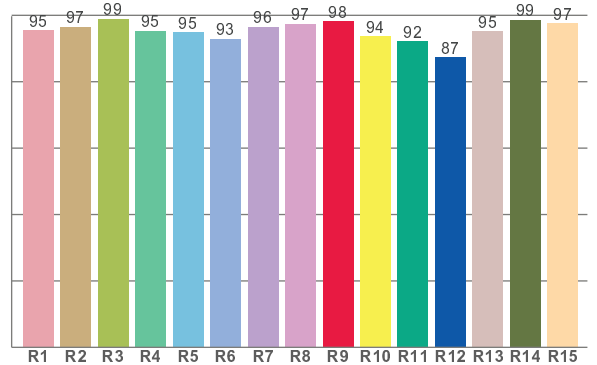




TM30: 91,7



CRI: 96,0 (R1-R8)



CRI R values, only R1-R8 are used to calculate final CRI value

R1	R2	R3	R4	R5	R6	R7	R8	R9	R10	R11	R12	R13	R14	R15
95,5	96,6	98,9	95,3	95,0	92,9	96,5	97,5	98,2	93,6	92,1	87,5	95,2	98,6	97,5

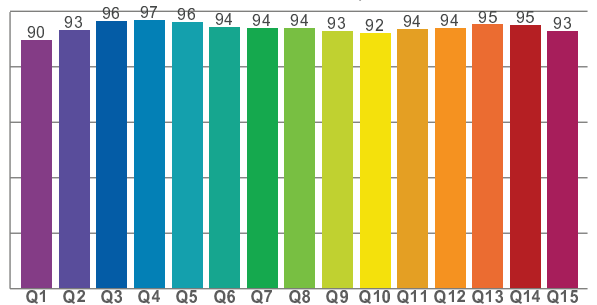
TM30 C values, 16 binned values out of total of 99 C values

C1	C2	C3	C4	C5	C6	C7	C8	C9	C10	C11	C12	C13	C14	C15	C16
94,3	95,7	93,0	87,7	92,0	93,2	88,1	92,3	89,8	91,4	92,8	89,7	90,9	92,6	90,8	91,6

CQS Q values

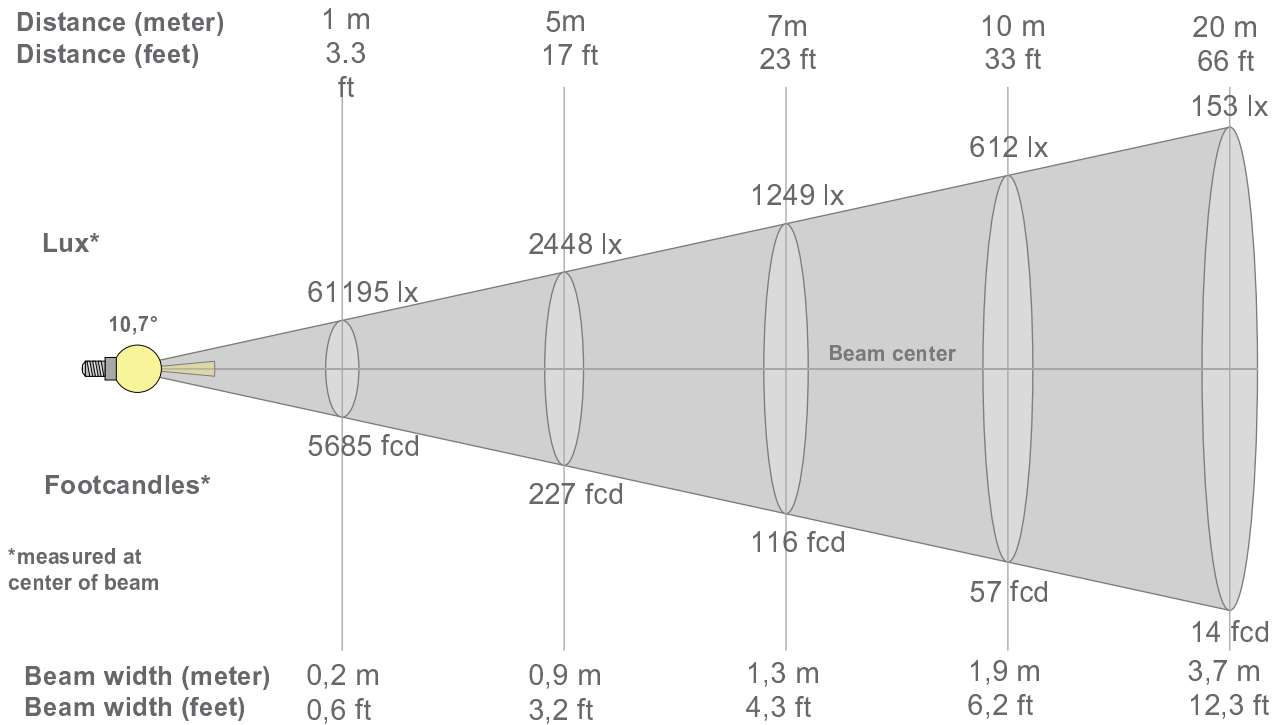
Q1	Q2	Q3	Q4	Q5	Q6	Q7	Q8	Q9	Q10	Q11	Q12	Q13	Q14	Q15
89,7	93,2	96,4	96,6	96,2	94,2	94,0	94,1	92,7	92,1	93,7	93,8	95,2	95,1	92,9

CQS: 93,6



Color parameters

Color temperature	Color rendering index	Red component	Color fidelity	Color gamut	Color quality scale	Color coordinate cie 1931	Color coordinate cie 1931	Color coordinate	Color coordinate	Color deviation from black body
CCT	CRI	CRI R9	TM30 Rf	TM30 Rg	CQS	x	y	u	v	Δuv
2728 K	96,0	98,2	91,7	98,4	93,6	0,458	0,411	0,261	0,351	0,0002



Beam intensities from 1-20m

1m	2m	3m	4m	5m	6m	7m	8m	9m	10m	11m	12m	13m	14m	15m	16m	17m	18m	19m	20m
3,3ft	6,6ft	9,8ft	13,1ft	16,4ft	19,7ft	23ft	26,2ft	29,5ft	32,8ft	36,1ft	39,4ft	42,7ft	45,9ft	49,2ft	52,5ft	55,8ft	59,1ft	62,3ft	65,6ft
61195lx	15299lx	6799lx	3825lx	2448lx	1700lx	1249lx	956lx	755lx	612lx	506lx	425lx	362lx	312lx	272lx	239lx	212lx	189lx	170lx	153lx
5685,2f	1421,3f	631,7fc	355,3fc	227,4fc	157,9fc	116fcd	88,8fcd	70,2fcd	56,9fcd	47fcd	39,5fcd	33,6fcd	29fcd	25,3fcd	22,2fcd	19,7fcd	17,5fcd	15,7fcd	14,2fcd

Intensities in 0° c-plane

0°	1°	2°	3°	4°	5°	6°	7°	8°	9°	10°	11°	12°	13°	14°	15°	16°	17°	18°	19°
61,2K	61,0K	59,5K	54,5K	45,2K	34,6K	24,5K	16,0K	10,2K	6,8K	4,7K	3,4K	2,5K	1,9K	1,5K	1,1K	0,9K	0,7K	0,6K	0,5K
100%	100%	97%	89%	74%	57%	40%	26%	17%	11%	8%	6%	4%	3%	2%	2%	1%	1%	1%	1%

Intensities in 90° c-plane

0°	1°	2°	3°	4°	5°	6°	7°	8°	9°	10°	11°	12°	13°	14°	15°	16°	17°	18°	19°
61,2K	61,7K	60,6K	56,2K	46,4K	34,4K	23,1K	14,3K	8,5K	5,4K	3,7K	2,6K	1,9K	1,5K	1,1K	0,9K	0,7K	0,6K	0,5K	0,4K
100%	101%	99%	92%	76%	56%	38%	23%	14%	9%	6%	4%	3%	2%	2%	1%	1%	1%	1%	1%

Intensities in 180° c-plane

0°	1°	2°	3°	4°	5°	6°	7°	8°	9°	10°	11°	12°	13°	14°	15°	16°	17°	18°	19°
61,2K	61,7K	59,4K	53,6K	44,0K	34,2K	25,2K	17,2K	11,3K	7,4K	5,1K	3,6K	2,7K	2,0K	1,5K	1,2K	0,9K	0,7K	0,6K	0,5K
100%	101%	97%	88%	72%	56%	41%	28%	18%	12%	8%	6%	4%	3%	3%	2%	2%	1%	1%	1%

Intensities in 270° c-plane

0°	1°	2°	3°	4°	5°	6°	7°	8°	9°	10°	11°	12°	13°	14°	15°	16°	17°	18°	19°
61,2K	60,5K	57,5K	50,4K	41,8K	33,3K	25,3K	18,2K	12,6K	8,6K	6,1K	4,5K	3,4K	2,6K	2,1K	1,6K	1,3K	1,0K	0,8K	0,6K
100%	99%	94%	82%	68%	54%	41%	30%	21%	14%	10%	7%	6%	4%	3%	3%	2%	2%	1%	1%

Beam angle 50%	Field angle 10%	Cutoff angle 2,5%	Intensity ratio in 120° cone	Intensity ratio in 90° cone
10,7°	18,7°	28,1°	98,3%	96,8%