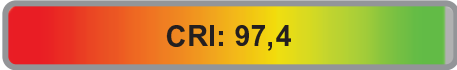


Light efficiency:



Light quality:



Color temperature:



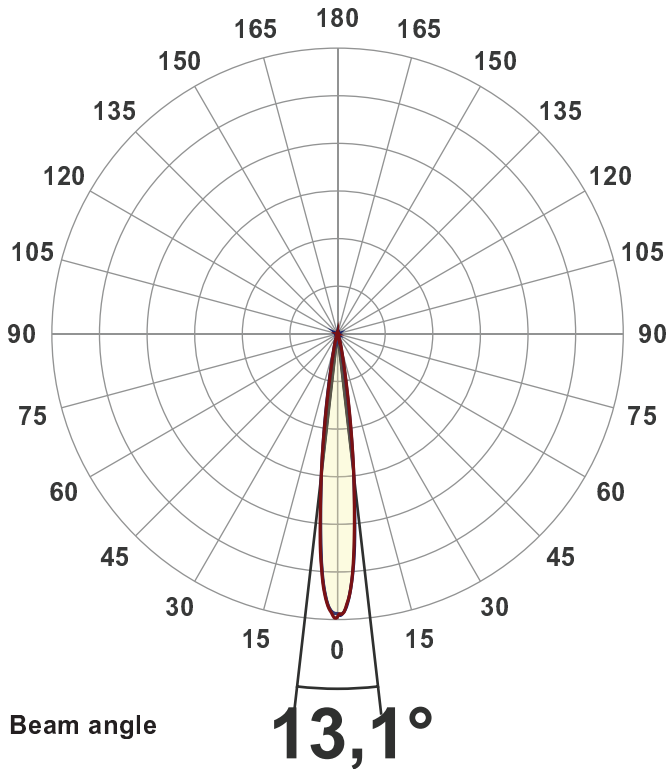
Output: 3544 lm
Peak: 51634 cd
Power: 37,7 W
PF: 1,0



Product name:
BB&S-CBL1-MEDIUM-3000K
 Item number:
BB&S-CBL1-MEDIUM-3000K
 Date and time:
01-08-2018 13:32:38
 Description:
Medium - 3000 Spotlight

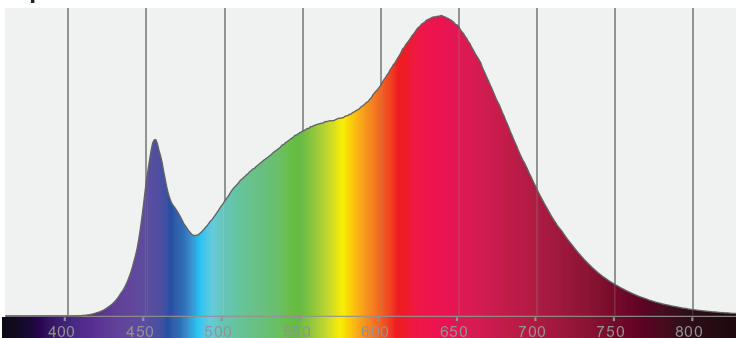
Measured at Ingemann Components by
 Jakob D. Jepsen

Measured in 8 planes to take into
 account for any stray lighting.

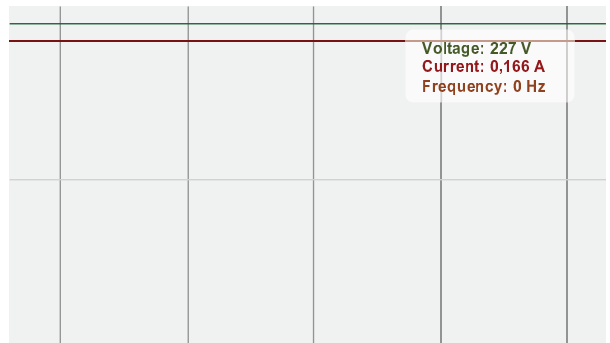


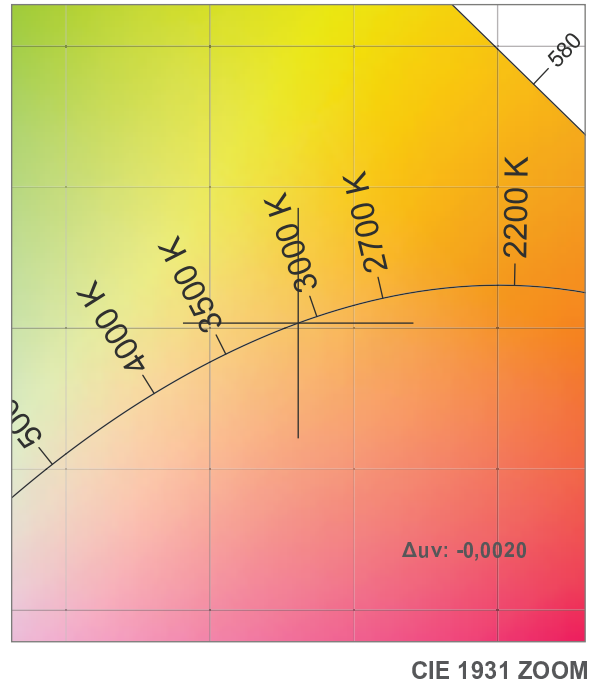
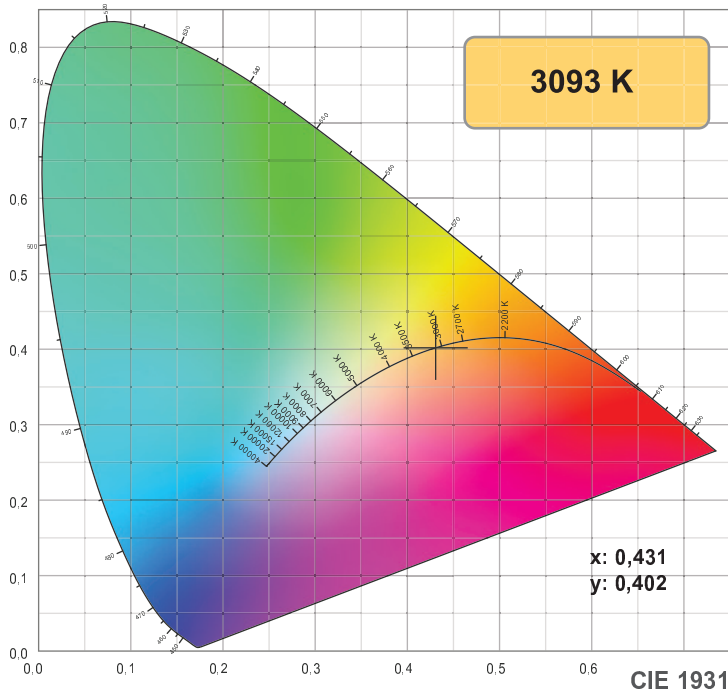
CIE 1931
 x: 0,431
 y: 0,402

Spectra

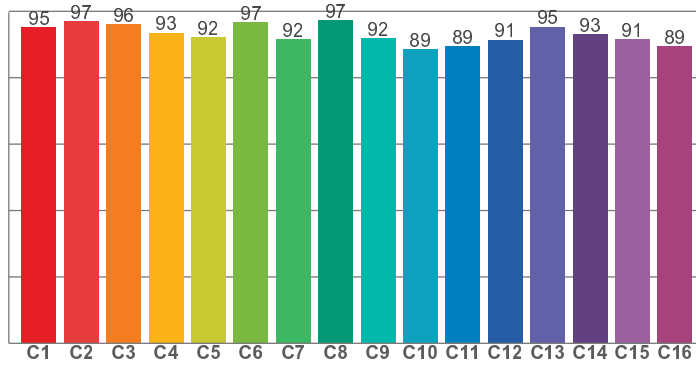


Power

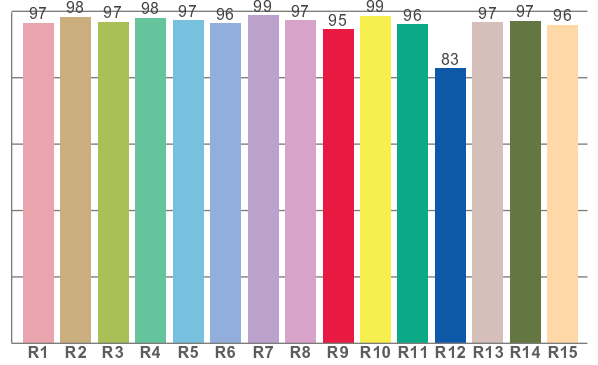




TM30: 93,1



CRI: 97,4 (R1-R8)



CRI R values, only R1-R8 are used to calculate final CRI value

R1	R2	R3	R4	R5	R6	R7	R8	R9	R10	R11	R12	R13	R14	R15
96,5	98,3	96,8	98,0	97,2	96,4	98,8	97,3	94,6	98,6	96,0	82,8	96,7	97,1	96,0

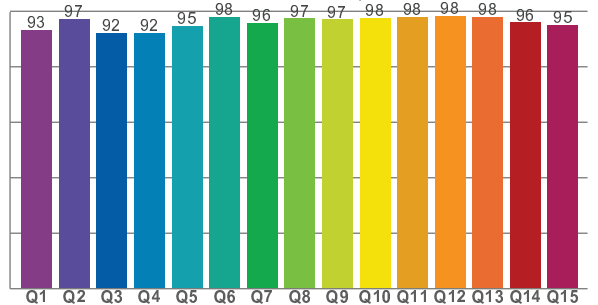
TM30 C values, 16 binned values out of total of 99 C values

C1	C2	C3	C4	C5	C6	C7	C8	C9	C10	C11	C12	C13	C14	C15	C16
95,1	96,9	96,1	93,5	92,3	96,7	91,6	97,3	91,9	88,6	89,4	91,4	95,3	93,0	91,5	89,4

CQS Q values

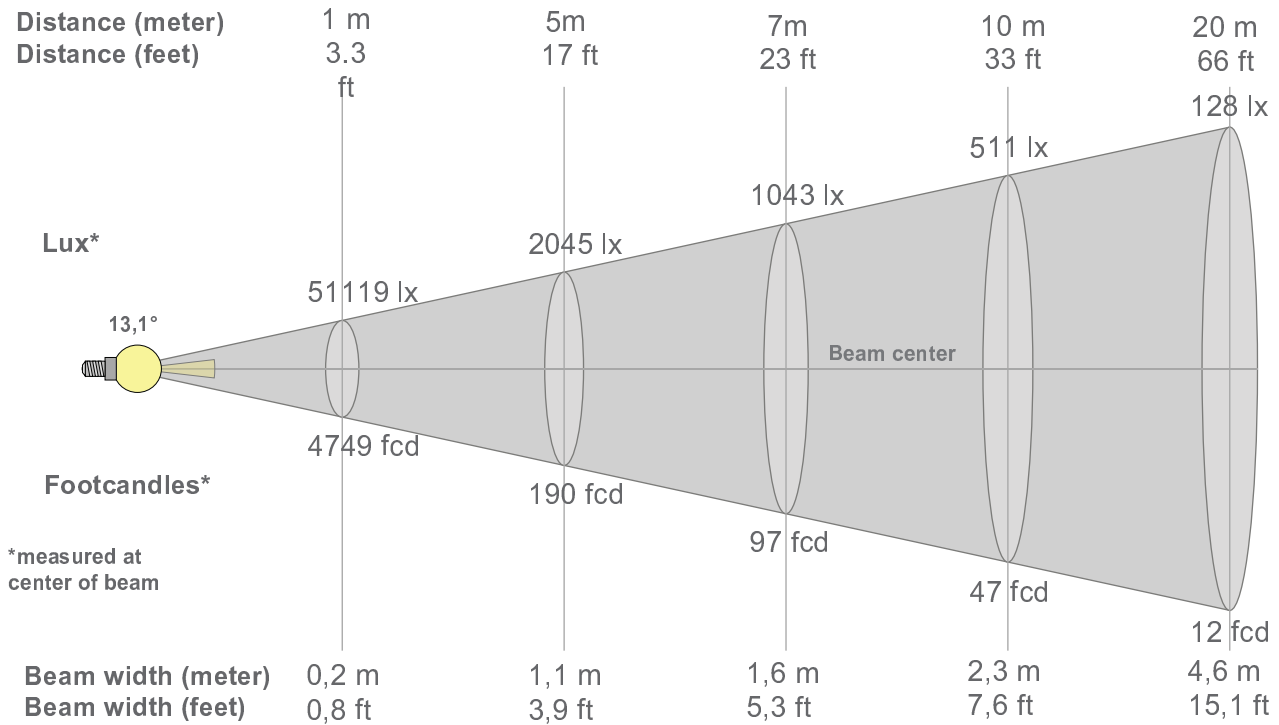
Q1	Q2	Q3	Q4	Q5	Q6	Q7	Q8	Q9	Q10	Q11	Q12	Q13	Q14	Q15
93,2	97,1	92,0	92,1	94,8	97,8	95,7	97,4	97,0	97,5	98,0	98,2	97,9	96,0	95,0

CQS: 95,3



Color parameters

Color temperature	Color rendering index	Red component	Color fidelity	Color gamut	Color quality scale	Color coordinate cie 1931	Color coordinate cie 1931	Color coordinate	Color coordinate	Color deviation from black body
CCT	CRI	CRI R9	TM30 Rf	TM30 Rg	CQS	x	y	u	v	Δuv
3093 K	97,4	94,6	93,1	101,1	95,3	0,431	0,402	0,248	0,344	-0,0020



Beam intensities from 1-20m

1m	2m	3m	4m	5m	6m	7m	8m	9m	10m	11m	12m	13m	14m	15m	16m	17m	18m	19m	20m
3,3ft	6,6ft	9,8ft	13,1ft	16,4ft	19,7ft	23ft	26,2ft	29,5ft	32,8ft	36,1ft	39,4ft	42,7ft	45,9ft	49,2ft	52,5ft	55,8ft	59,1ft	62,3ft	65,6ft
51119lx	12780lx	5680lx	3195lx	2045lx	1420lx	1043lx	799lx	631lx	511lx	422lx	355lx	302lx	261lx	227lx	200lx	177lx	158lx	142lx	128lx
4749,1fcd	1187,3fcd	527,7fcd	296,8fcd	190fcd	131,9fcd	96,9fcd	74,2fcd	58,6fcd	47,5fcd	39,2fcd	33fcd	28,1fcd	24,2fcd	21,1fcd	18,6fcd	16,4fcd	14,7fcd	13,2fcd	11,9fcd

Intensities in 0° c-plane

0°	1°	2°	3°	4°	5°	6°	7°	8°	9°	10°	11°	12°	13°	14°	15°	16°	17°	18°	19°
51,1K	50,7K	48,9K	46,0K	41,2K	35,0K	28,9K	23,2K	17,6K	12,8K	9,1K	6,6K	5,0K	3,8K	3,0K	2,5K	2,0K	1,7K	1,4K	1,1K
100%	99%	96%	90%	81%	68%	57%	45%	34%	25%	18%	13%	10%	8%	6%	5%	4%	3%	3%	2%

Intensities in 90° c-plane

0°	1°	2°	3°	4°	5°	6°	7°	8°	9°	10°	11°	12°	13°	14°	15°	16°	17°	18°	19°
51,1K	50,7K	49,2K	46,0K	41,7K	35,8K	29,2K	22,9K	16,9K	12,0K	8,4K	5,9K	4,4K	3,4K	2,7K	2,2K	1,8K	1,5K	1,2K	1,0K
100%	99%	96%	90%	82%	70%	57%	45%	33%	23%	16%	12%	9%	7%	5%	4%	3%	3%	2%	2%

Intensities in 180° c-plane

0°	1°	2°	3°	4°	5°	6°	7°	8°	9°	10°	11°	12°	13°	14°	15°	16°	17°	18°	19°
51,1K	51,0K	49,4K	46,6K	42,1K	36,3K	29,4K	23,0K	17,0K	11,8K	8,1K	5,7K	4,2K	3,2K	2,6K	2,1K	1,7K	1,4K	1,1K	0,9K
100%	100%	97%	91%	82%	71%	57%	45%	33%	23%	16%	11%	8%	6%	5%	4%	3%	3%	2%	2%

Intensities in 270° c-plane

0°	1°	2°	3°	4°	5°	6°	7°	8°	9°	10°	11°	12°	13°	14°	15°	16°	17°	18°	19°
51,1K	50,5K	49,2K	46,2K	41,6K	35,2K	28,9K	23,1K	17,3K	12,4K	8,8K	6,2K	4,5K	3,4K	2,7K	2,1K	1,8K	1,4K	1,2K	1,0K
100%	99%	96%	90%	81%	69%	57%	45%	34%	24%	17%	12%	9%	7%	5%	4%	3%	3%	2%	2%

Beam angle 50%	Field angle 10%	Cutoff angle 2,5%	Intensity ratio in 120° cone	Intensity ratio in 90° cone
13,1°	23°	35°	98,4%	96,8%