

Light efficiency:



Light quality:



Color temperature:



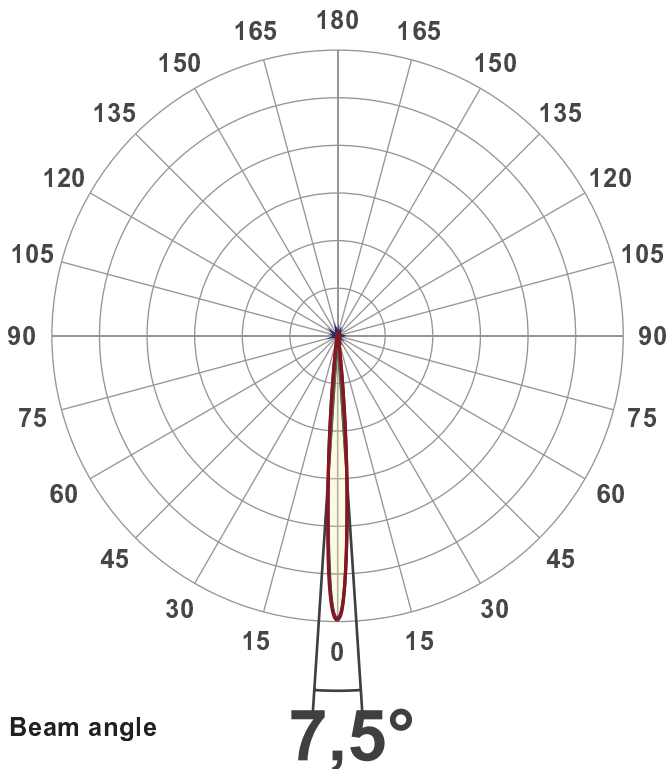
Output: 3665 lm
Peak: 149124 cd
Power: 40,3 W
PF: 1,0



Product name:
BB&S-CBL1-ACL- 5700K
 Item number:
BB&S-CBL1-ACL- 5600K
 Date and time:
01-08-2018 09:19:11
 Description:
ACL - 5600 Spotlight

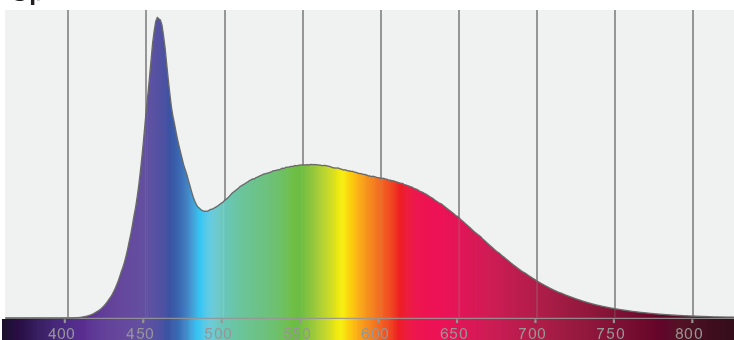
**Measured at Ingemann Components by
 Jakob D. Jepsen**

**Measured in 8 planes to take into
 account for any stray lighting.**

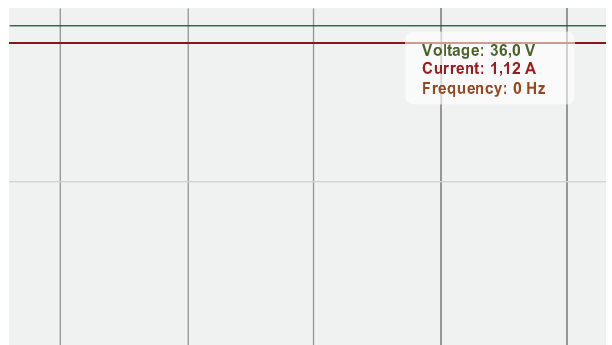


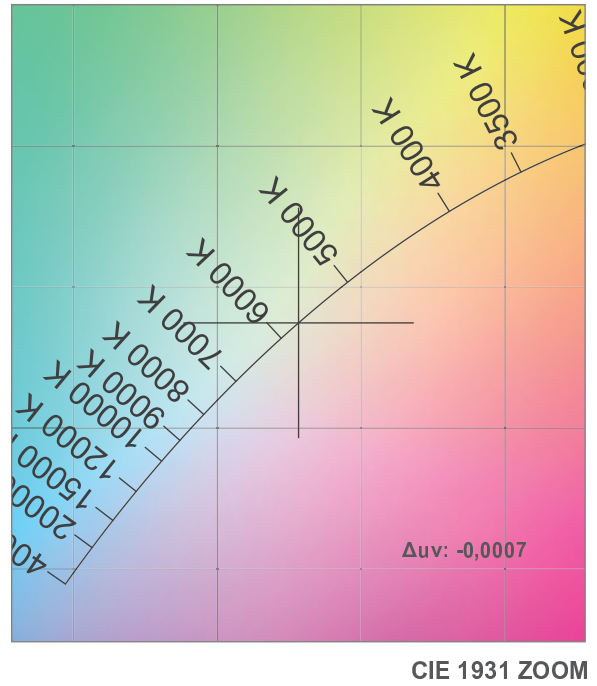
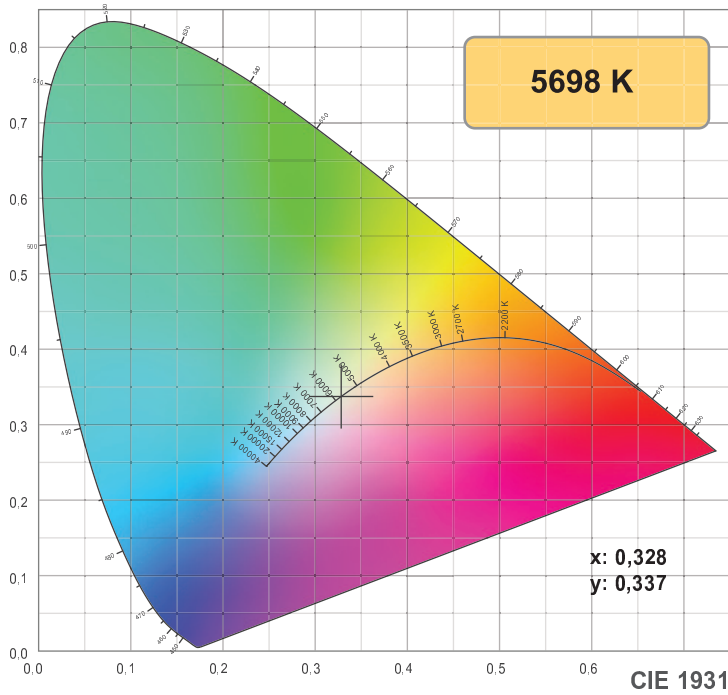
CIE 1931
 x: 0,328
 y: 0,337

Spectra

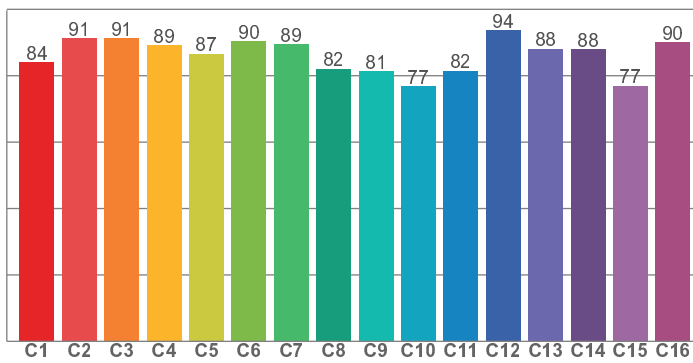


Power

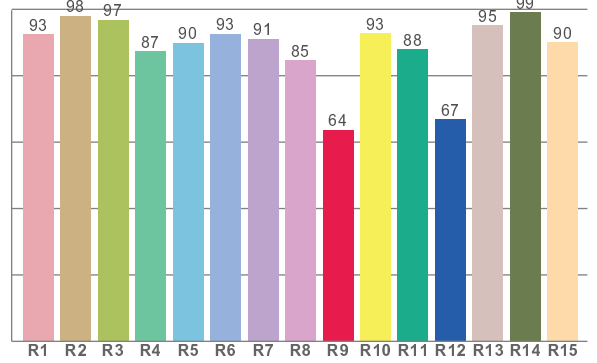




TM30: 86,1



CRI: 91,6 (R1-R8)



CRI R values, only R1-R8 are used to calculate final CRI value

R1	R2	R3	R4	R5	R6	R7	R8	R9	R10	R11	R12	R13	R14	R15
92,5	98,0	96,8	87,4	89,9	92,6	91,1	84,7	63,7	92,8	87,9	66,9	95,2	99,0	90,1

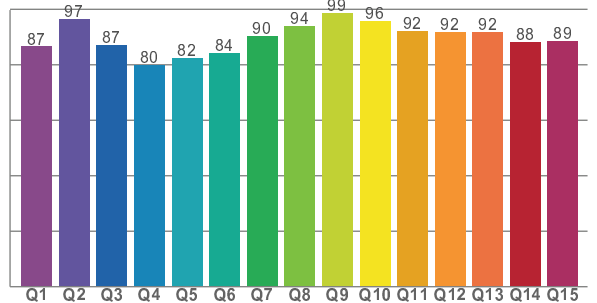
TM30 C values, 16 binned values out of total of 99 C values

C1	C2	C3	C4	C5	C6	C7	C8	C9	C10	C11	C12	C13	C14	C15	C16
84,0	91,2	91,3	89,2	86,5	90,4	89,5	82,1	81,2	76,8	81,5	93,6	88,1	88,0	76,9	90,0

CQS Q values

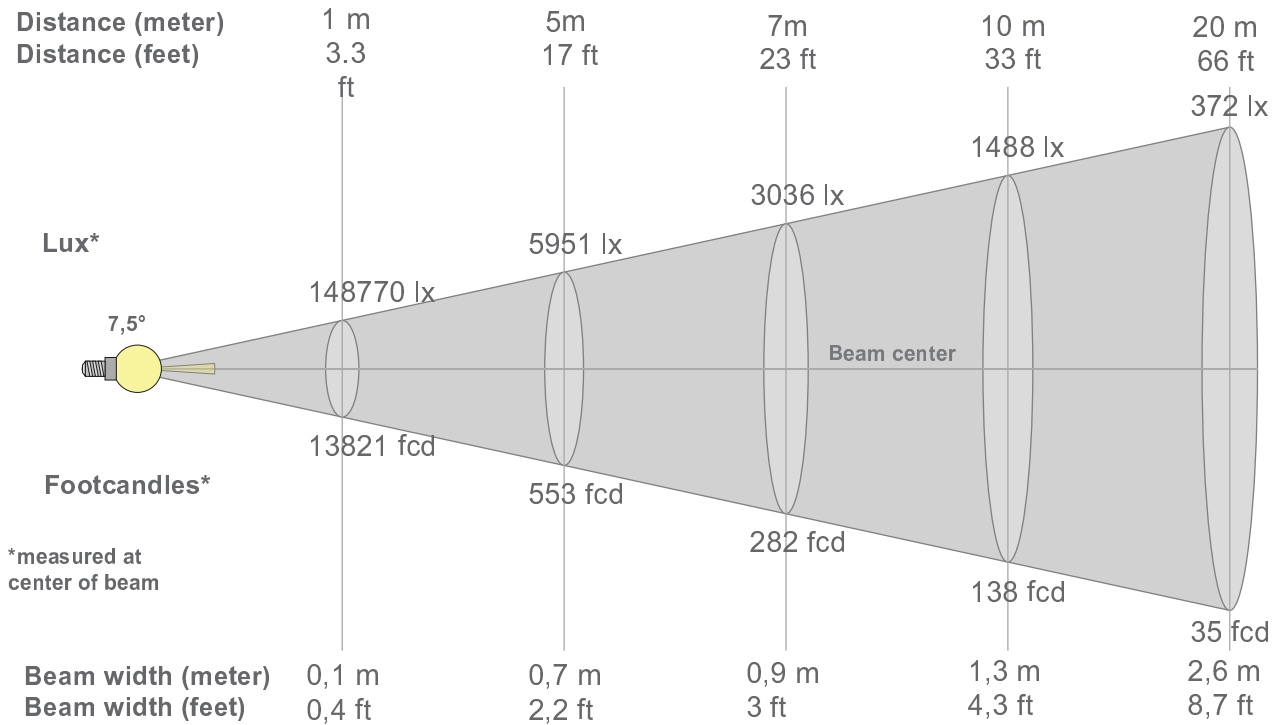
Q1	Q2	Q3	Q4	Q5	Q6	Q7	Q8	Q9	Q10	Q11	Q12	Q13	Q14	Q15
86,5	96,5	87,2	80,0	82,4	84,3	90,4	93,9	98,7	95,8	92,3	91,8	91,8	88,2	88,5

CQS: 88,7



Color parameters

Color temperature	Color rendering index	Red component	Color fidelity	Color gamut	Color quality scale	Color coordinate cie 1931	Color coordinate cie 1931	Color coordinate	Color coordinate	Color deviation from black body
CCT	CRI	CRI R9	TM30 Rf	TM30 Rg	CQS	x	y	u	v	Δuv
5698 K	91,6	63,7	86,1	95,0	88,7	0,328	0,337	0,202	0,317	-0,0007



Beam intensities from 1-20m

1m	2m	3m	4m	5m	6m	7m	8m	9m	10m	11m	12m	13m	14m	15m	16m	17m	18m	19m	20m
3,3ft	6,6ft	9,8ft	13,1ft	16,4ft	19,7ft	23ft	26,2ft	29,5ft	32,8ft	36,1ft	39,4ft	42,7ft	45,9ft	49,2ft	52,5ft	55,8ft	59,1ft	62,3ft	65,6ft
148770lx	37192lx	16530lx	9298lx	5951lx	4132lx	3036lx	2325lx	1837lx	1488lx	1230lx	1033lx	880lx	759lx	661lx	581lx	515lx	459lx	412lx	372lx
13821,1 fcd	3455,3 fcd	1535,7 fcd	863,8 fcd	552,8 fcd	383,9 fcd	282,1 fcd	216 fcd	170,6 fcd	138,2 fcd	114,2 fcd	96 fcd	81,8 fcd	70,5 fcd	61,4 fcd	54 fcd	47,8 fcd	42,7 fcd	38,3 fcd	34,6 fcd

Intensities in 0° c-plane

0°	1°	2°	3°	4°	5°	6°	7°	8°	9°	10°	11°	12°	13°	14°	15°	16°	17°	18°	19°
149K	143K	122K	95K	68K	44K	26K	16K	10K	7K	5K	3K	2K	2K	1K	1K	1K	1K	1K	0K
100%	96%	82%	64%	46%	30%	18%	11%	7%	5%	3%	2%	2%	1%	1%	1%	1%	0%	0%	0%

Intensities in 90° c-plane

0°	1°	2°	3°	4°	5°	6°	7°	8°	9°	10°	11°	12°	13°	14°	15°	16°	17°	18°	19°
149K	142K	122K	96K	68K	42K	24K	14K	8K	6K	4K	3K	2K	2K	1K	1K	1K	1K	1K	0K
100%	95%	82%	64%	46%	28%	16%	9%	6%	4%	3%	2%	2%	1%	1%	1%	1%	0%	0%	0%

Intensities in 180° c-plane

0°	1°	2°	3°	4°	5°	6°	7°	8°	9°	10°	11°	12°	13°	14°	15°	16°	17°	18°	19°
149K	145K	128K	98K	67K	41K	23K	13K	8K	6K	4K	3K	2K	2K	1K	1K	1K	1K	1K	0K
100%	97%	86%	66%	45%	27%	15%	8%	5%	4%	3%	2%	1%	1%	1%	1%	1%	0%	0%	0%

Intensities in 270° c-plane

0°	1°	2°	3°	4°	5°	6°	7°	8°	9°	10°	11°	12°	13°	14°	15°	16°	17°	18°	19°
149K	143K	123K	95K	68K	43K	25K	14K	9K	6K	4K	3K	2K	2K	1K	1K	1K	1K	1K	0K
100%	96%	83%	64%	46%	29%	17%	10%	6%	4%	3%	2%	1%	1%	1%	1%	0%	0%	0%	0%

Beam angle 50%	Field angle 10%	Cutoff angle 2,5%	Intensity ratio in 120° cone	Intensity ratio in 90° cone
7,5°	13,7°	20,9°	98,5%	97,2%