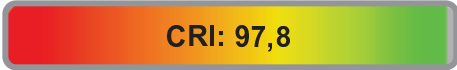


Light efficiency:



Light quality:



Color temperature:



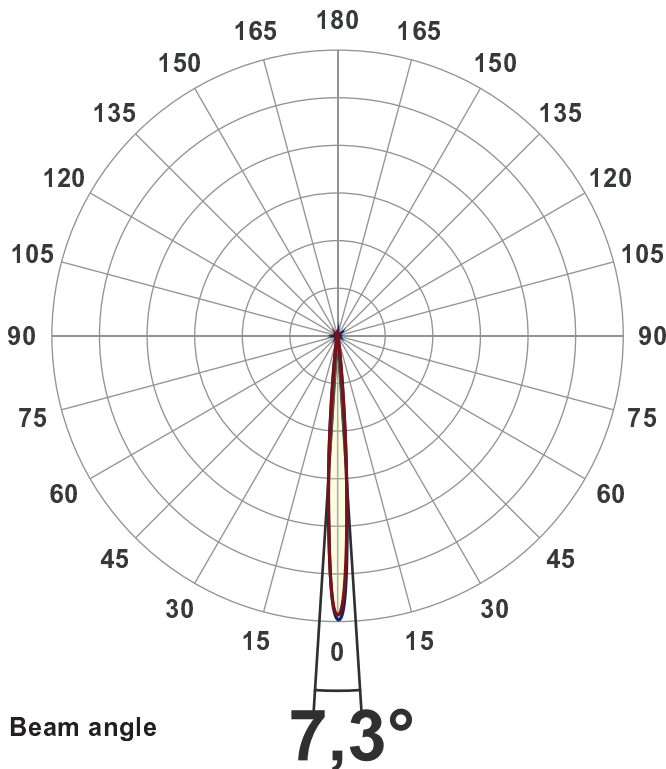
Output: 3129 lm
Peak: 138920 cd
Power: 40,3 W
PF: 1,0



Product name:
BB&S_CBL1-ACL-4000K
 Item number:
BB&S_CBL1-ACL-4000K
 Date and time:
01-08-2018 09:51:25
 Description:
ACL - 4000 Spotlight

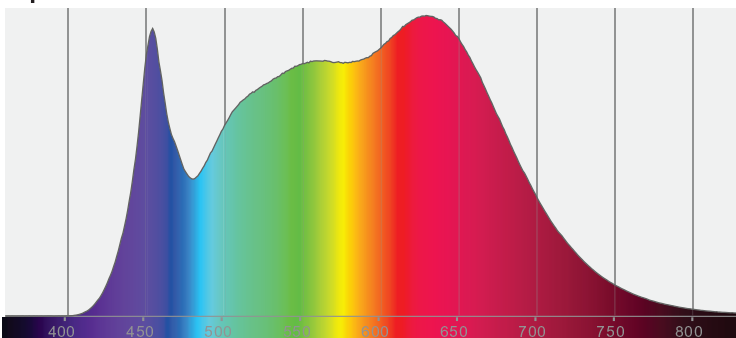
Measured at Ingemann Components by
 Jakob D. Jepsen

Measured in 8 planes to take into
 account for any stray lighting.

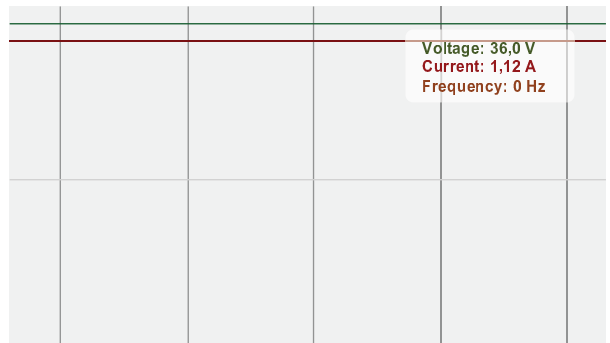


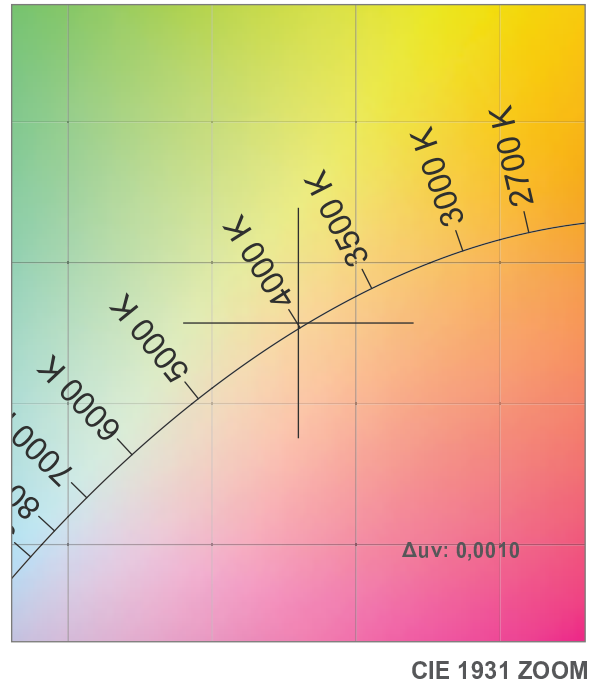
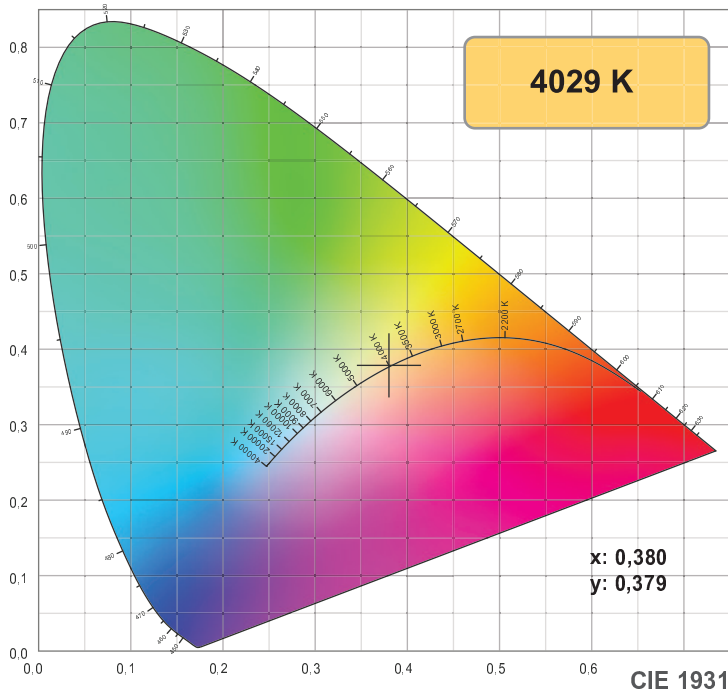
CIE 1931
 x: 0,380
 y: 0,379

Spectra

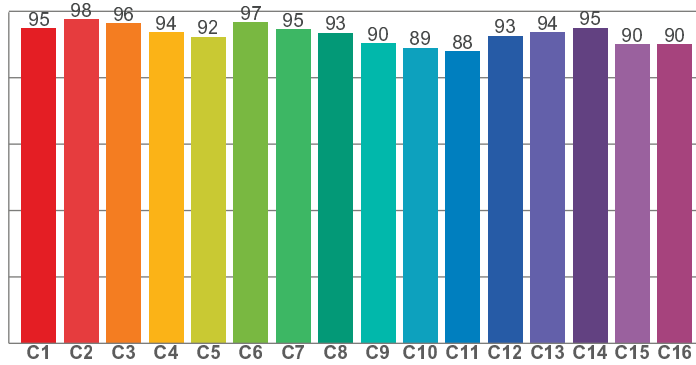


Power

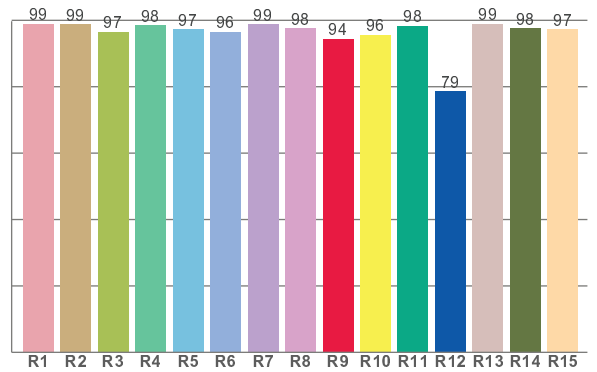




TM30: 92,9



CRI: 97,8 (R1-R8)



CRI R values, only R1-R8 are used to calculate final CRI value

R1	R2	R3	R4	R5	R6	R7	R8	R9	R10	R11	R12	R13	R14	R15
98,8	98,8	96,5	98,5	97,4	96,4	98,7	97,7	94,4	95,6	98,3	78,6	99,0	97,5	97,2

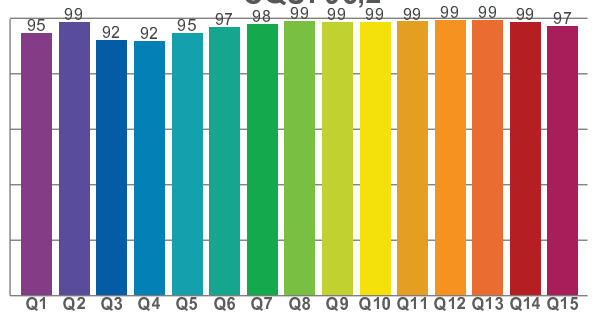
TM30 C values, 16 binned values out of total of 99 C values

C1	C2	C3	C4	C5	C6	C7	C8	C9	C10	C11	C12	C13	C14	C15	C16
94,9	97,5	96,4	93,7	92,4	96,6	94,6	93,5	90,5	89,0	87,9	92,7	93,7	95,1	90,1	90,1

CQS Q values

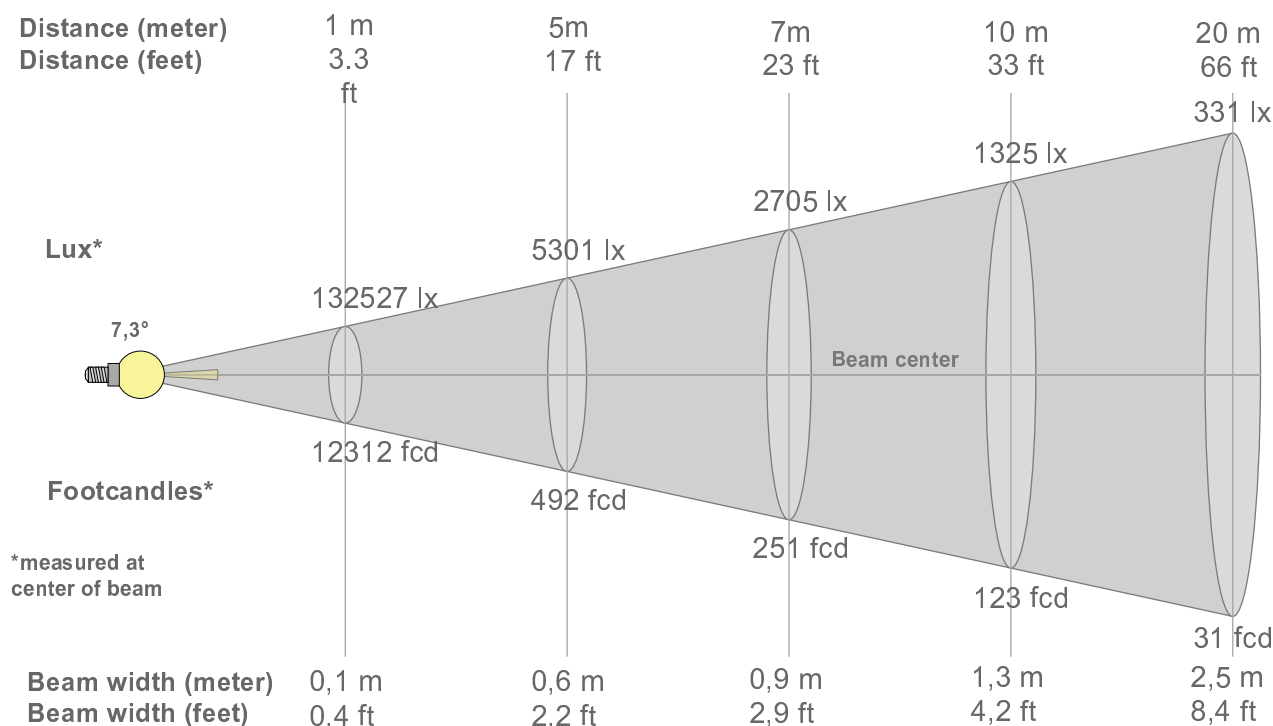
Q1	Q2	Q3	Q4	Q5	Q6	Q7	Q8	Q9	Q10	Q11	Q12	Q13	Q14	Q15
94,5	98,7	92,2	91,7	94,8	96,8	98,0	98,9	98,7	98,5	98,8	99,2	99,5	98,6	97,2

CQS: 96,2



Color parameters

Color temperature	Color rendering index	Red component	Color fidelity	Color gamut	Color quality scale	Color coordinate cie 1931	Color coordinate cie 1931	Color coordinate	Color coordinate	Color deviation from black body
CCT	CRI	CRI R9	TM30 Rf	TM30 Rg	CQS	x	y	u	v	Δuv
4029 K	97,8	94,4	92,9	99,5	96,2	0,380	0,379	0,224	0,335	0,0010



Beam intensities from 1-20m

1m	2m	3m	4m	5m	6m	7m	8m	9m	10m	11m	12m	13m	14m	15m	16m	17m	18m	19m	20m
3,3ft	6,6ft	9,8ft	13,1ft	16,4ft	19,7ft	23ft	26,2ft	29,5ft	32,8ft	36,1ft	39,4ft	42,7ft	45,9ft	49,2ft	52,5ft	55,8ft	59,1ft	62,3ft	65,6ft
132527lx	33132lx	14725lx	8283lx	5301lx	3681lx	2705lx	2071lx	1636lx	1325lx	1095lx	920lx	784lx	676lx	589lx	518lx	459lx	409lx	367lx	331lx
12312,2 fcd	3078fcd	1368fcd	769,5fcd	492,5fcd	342fcd	251,3fcd	192,4fcd	152fcd	123,1fcd	101,8fcd	85,5fcd	72,9fcd	62,8fcd	54,7fcd	48,1fcd	42,6fcd	38fcd	34,1fcd	30,8fcd

Intensities in 0° c-plane

0°	1°	2°	3°	4°	5°	6°	7°	8°	9°	10°	11°	12°	13°	14°	15°	16°	17°	18°	19°
133K	128K	110K	85K	58K	35K	20K	12K	7K	5K	4K	3K	2K	1K	1K	1K	1K	1K	0K	0K
100%	96%	83%	64%	44%	27%	15%	9%	6%	4%	3%	2%	1%	1%	1%	1%	0%	0%	0%	0%

Intensities in 90° c-plane

0°	1°	2°	3°	4°	5°	6°	7°	8°	9°	10°	11°	12°	13°	14°	15°	16°	17°	18°	19°
133K	132K	116K	87K	56K	33K	18K	10K	6K	4K	3K	2K	1K	1K	1K	1K	1K	0K	0K	0K
100%	100%	88%	65%	43%	25%	13%	7%	5%	3%	2%	1%	1%	1%	1%	1%	0%	0%	0%	0%

Intensities in 180° c-plane

0°	1°	2°	3°	4°	5°	6°	7°	8°	9°	10°	11°	12°	13°	14°	15°	16°	17°	18°	19°
133K	127K	107K	83K	59K	36K	20K	12K	7K	5K	4K	3K	2K	1K	1K	1K	1K	1K	0K	0K
100%	96%	81%	63%	44%	27%	15%	9%	6%	4%	3%	2%	1%	1%	1%	1%	0%	0%	0%	0%

Intensities in 270° c-plane

0°	1°	2°	3°	4°	5°	6°	7°	8°	9°	10°	11°	12°	13°	14°	15°	16°	17°	18°	19°
133K	128K	107K	82K	59K	38K	23K	14K	9K	6K	5K	3K	3K	2K	1K	1K	1K	1K	1K	0K
100%	96%	81%	62%	45%	29%	17%	11%	7%	5%	4%	3%	2%	1%	1%	1%	1%	1%	0%	0%

Beam angle 50%	Field angle 10%	Cutoff angle 2,5%	Intensity ratio in 120° cone	Intensity ratio in 90° cone
7,3°	13,5°	20,6°	98,7%	97,4%