

Light efficiency:



Light quality:



Color temperature:



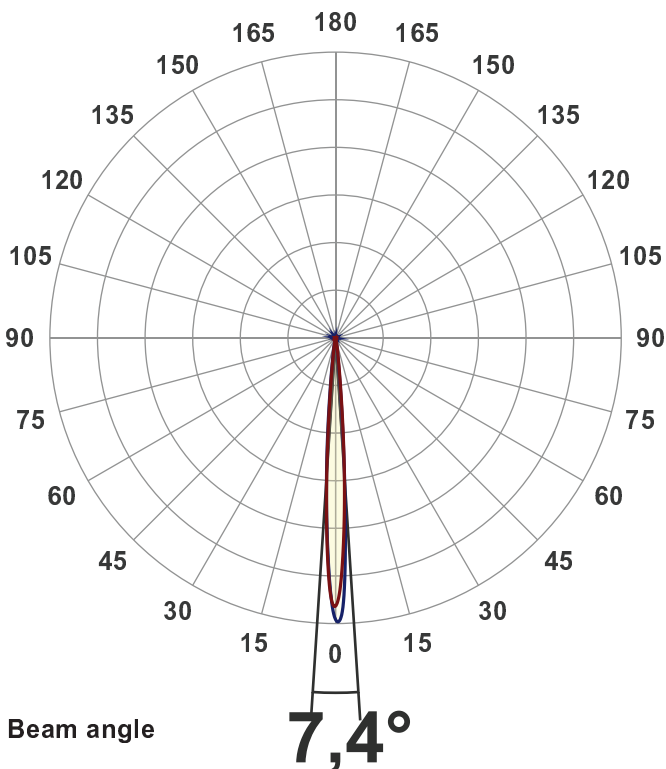
Output: 2930 lm
Peak: 123828 cd
Power: 39,6 W
PF: 1,0



Product name:
BB&S_CBL1-ACL-3000K
 Item number:
BB&S_CBL1-3000K
 Date and time:
01-08-2018 10:19:20
 Description:
ACL - 3000 Spotlight

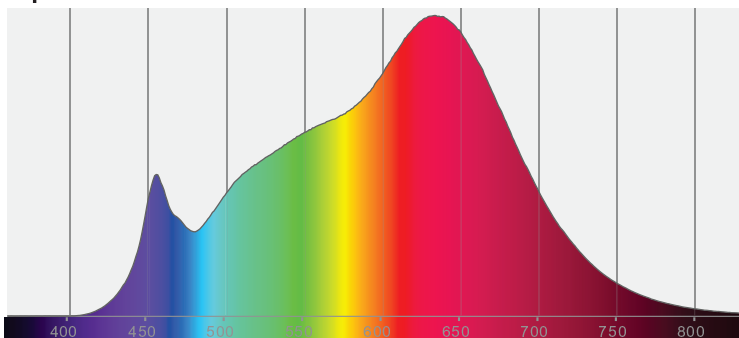
Measured at Ingemann Components by
 Jakob D. Jepsen

Measured in 8 planes to take into
 account for any stray lighting.

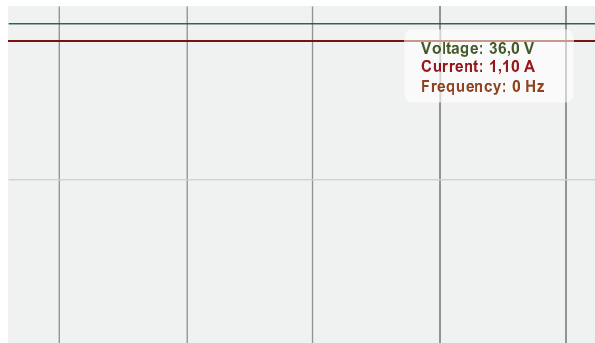


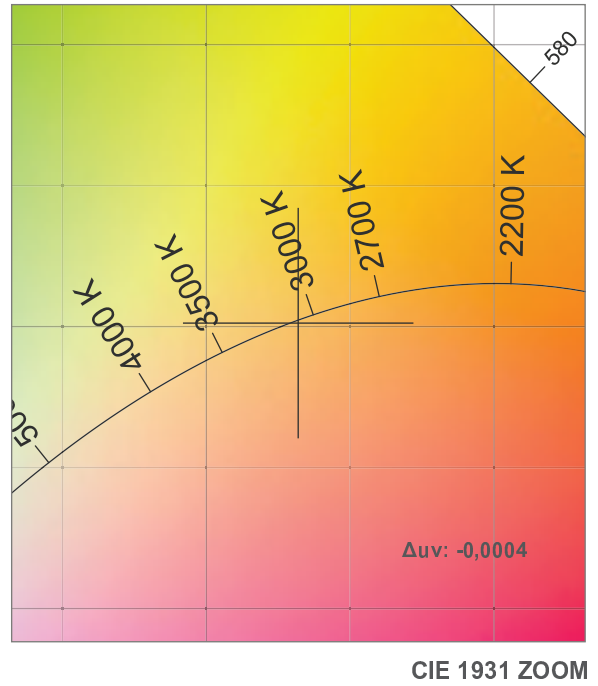
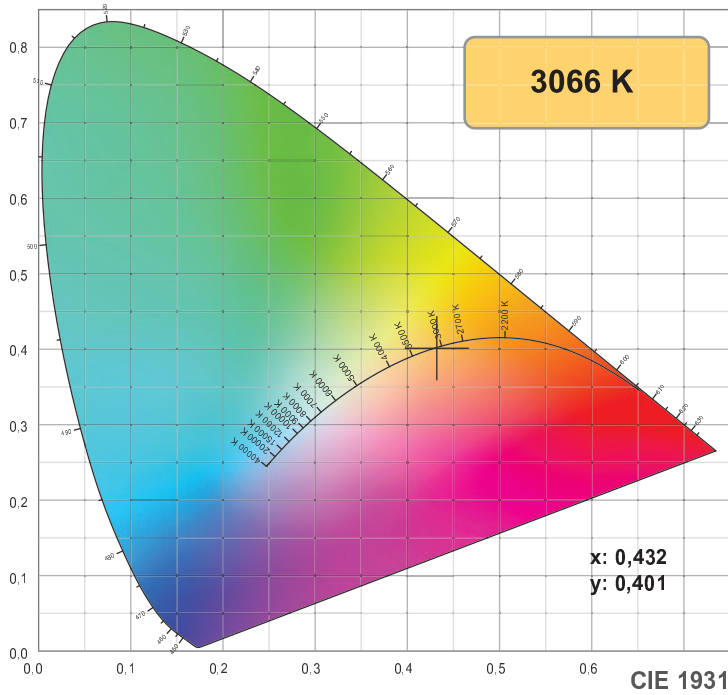
CIE 1931
 x: 0,432
 y: 0,401

Spectra

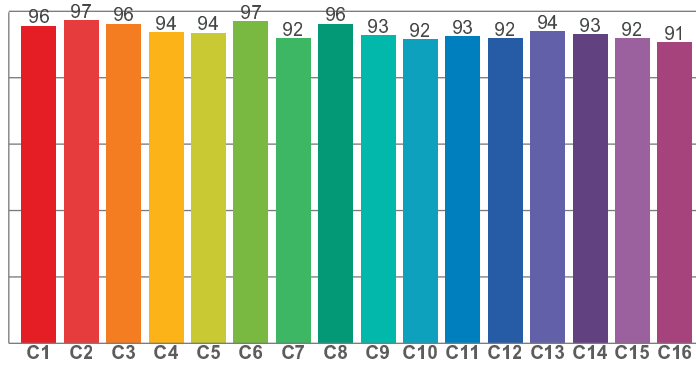


Power

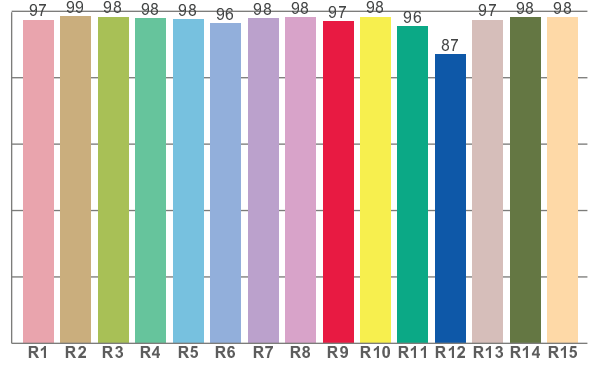




TM30: 93,9



CRI: 97,8 (R1-R8)



CRI R values, only R1-R8 are used to calculate final CRI value

R1	R2	R3	R4	R5	R6	R7	R8	R9	R10	R11	R12	R13	R14	R15
97,5	98,5	98,4	97,9	97,7	96,4	97,9	98,1	96,9	98,3	95,5	87,2	97,5	98,1	98,3

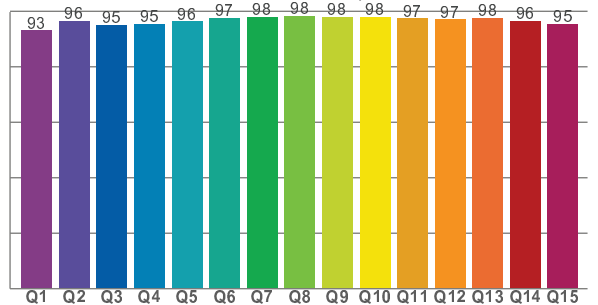
TM30 C values, 16 binned values out of total of 99 C values

C1	C2	C3	C4	C5	C6	C7	C8	C9	C10	C11	C12	C13	C14	C15	C16
95,6	97,4	96,2	93,6	93,5	97,0	91,9	96,2	92,9	91,5	92,5	91,8	93,9	93,0	91,9	90,8

CQS Q values

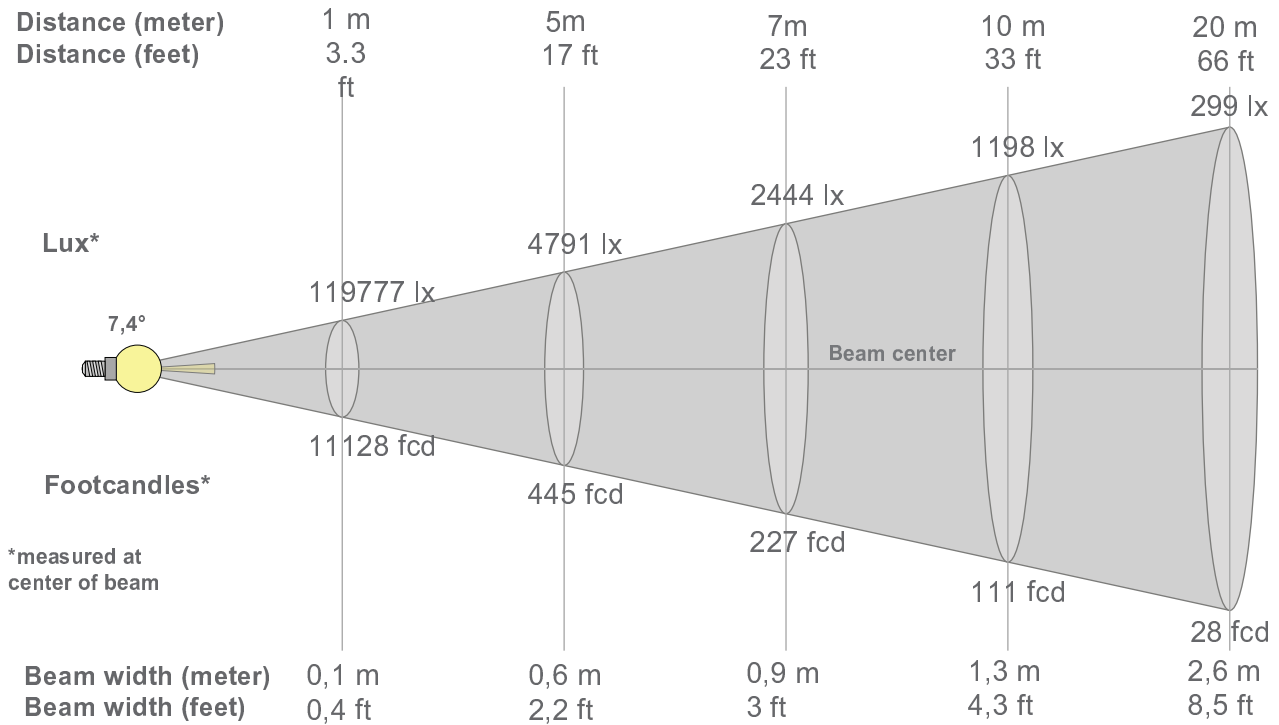
Q1	Q2	Q3	Q4	Q5	Q6	Q7	Q8	Q9	Q10	Q11	Q12	Q13	Q14	Q15
93,1	96,4	95,1	95,2	96,3	97,5	98,0	98,4	97,8	97,9	97,4	97,0	97,5	96,4	95,3

CQS: 96,2



Color parameters

Color temperature	Color rendering index	Red component	Color fidelity	Color gamut	Color quality scale	Color coordinate cie 1931	Color coordinate cie 1931	Color coordinate	Color coordinate	Color deviation from black body
CCT	CRI	CRI R9	TM30 Rf	TM30 Rg	CQS	x	y	u	v	Δuv
3066 K	97,8	96,9	93,9	100,1	96,2	0,432	0,401	0,249	0,346	-0,0004



Beam intensities from 1-20m

1m	2m	3m	4m	5m	6m	7m	8m	9m	10m	11m	12m	13m	14m	15m	16m	17m	18m	19m	20m
3,3ft	6,6ft	9,8ft	13,1ft	16,4ft	19,7ft	23ft	26,2ft	29,5ft	32,8ft	36,1ft	39,4ft	42,7ft	45,9ft	49,2ft	52,5ft	55,8ft	59,1ft	62,3ft	65,6ft
119777lx	29944lx	13309lx	7486lx	4791lx	3327lx	2444lx	1872lx	1479lx	1198lx	990lx	832lx	709lx	611lx	532lx	468lx	414lx	370lx	332lx	299lx
11127,6 fcd	2781,9fcd	1236,4fcd	695,5fcd	445,1fcd	309,1fcd	227,1fcd	173,9fcd	137,4fcd	111,3fcd	92fcd	77,3fcd	65,8fcd	56,8fcd	49,5fcd	43,5fcd	38,5fcd	34,3fcd	30,8fcd	27,8fcd

Intensities in 0° c-plane

0°	1°	2°	3°	4°	5°	6°	7°	8°	9°	10°	11°	12°	13°	14°	15°	16°	17°	18°	19°
120K	110K	94K	74K	53K	33K	19K	12K	8K	5K	4K	3K	2K	1K	1K	1K	1K	1K	0K	0K
100%	92%	78%	62%	44%	28%	16%	10%	6%	4%	3%	2%	2%	1%	1%	1%	1%	0%	0%	0%

Intensities in 90° c-plane

0°	1°	2°	3°	4°	5°	6°	7°	8°	9°	10°	11°	12°	13°	14°	15°	16°	17°	18°	19°
120K	122K	110K	82K	52K	30K	16K	9K	5K	4K	2K	2K	1K	1K	1K	1K	1K	0K	0K	0K
100%	102%	91%	68%	44%	25%	13%	7%	4%	3%	2%	1%	1%	1%	1%	1%	0%	0%	0%	0%

Intensities in 180° c-plane

0°	1°	2°	3°	4°	5°	6°	7°	8°	9°	10°	11°	12°	13°	14°	15°	16°	17°	18°	19°
120K	113K	97K	75K	53K	32K	18K	11K	7K	5K	3K	2K	2K	1K	1K	1K	1K	0K	0K	0K
100%	94%	81%	63%	44%	27%	15%	9%	6%	4%	3%	2%	1%	1%	1%	1%	0%	0%	0%	0%

Intensities in 270° c-plane

0°	1°	2°	3°	4°	5°	6°	7°	8°	9°	10°	11°	12°	13°	14°	15°	16°	17°	18°	19°
120K	113K	95K	75K	55K	37K	22K	14K	9K	6K	4K	3K	2K	2K	1K	1K	1K	1K	0K	0K
100%	94%	79%	62%	46%	31%	19%	11%	7%	5%	4%	3%	2%	1%	1%	1%	1%	0%	0%	0%

Beam angle 50%	Field angle 10%	Cutoff angle 2,5%	Intensity ratio in 120° cone	Intensity ratio in 90° cone
7,4°	13,7°	20,8°	98,5%	97,1%