



## 2013 - 2017 RZR 1000 High Clearance Radius Rod Installation Instructions

**WARNING!** Please read and understand these instructions completely before installation to avoid possible injury to yourself or damage to the parts or your vehicle.

**CAUTION!** This installation should be performed by an authorized Polaris Dealer or a qualified Mechanic. **DEALER:** These Instructions Contain important information for future reference and must be given to the customer. Your RZR will require a professional alignment after installation is complete.

**Tools Required for Radius Rod Installation;** Automotive floor Jack, Wooden blocks (for jack spacing) 2 Automotive Jack Stands, Large Hammer, Rubber Mallet, Pry Bar, 18mm Socket, 19mm or  $\frac{3}{4}$ " Socket, 18mm open ended wrench, 24mm open ended wrench, 30mm open end / or large crescent wrench, Metal blade hacksaw or cutting wheel, Tape Measure 1-2hrs instal time.

### **INSTALLATION:**

1. Find a clean level workspace for your RZR Place the vehicle in park and place blocks or wheel chocks behind the front wheels to keep the UTV from rolling or moving during installation.
2. Jack the RZR from the skid plate beneath the engine up until the rear tires have cleared the ground. Stabilize the vehicle with additional Jack stacks underneath the trailing arms. Now you can remove both rear wheels from the vehicle using you 19mm or  $\frac{3}{4}$ ' socket for the lug nuts.



3. Once you have clear access to the outer radius rod hardware with the wheels removed, you can remove your first upper radius rod. **It is important to remove and instal the new rods only one at a time to keep the rear end in position.**
4. Starting with one upper radius rod remove the hardware securing the rod to the frame and at the hub. 18mm socket and 18mm open ended wrench will be needed.



5. When each radius rod is removed lay it out on flat ground and measure the stock rods length. Duplicate the length eye to eye with the new Kryptonite rod ends.

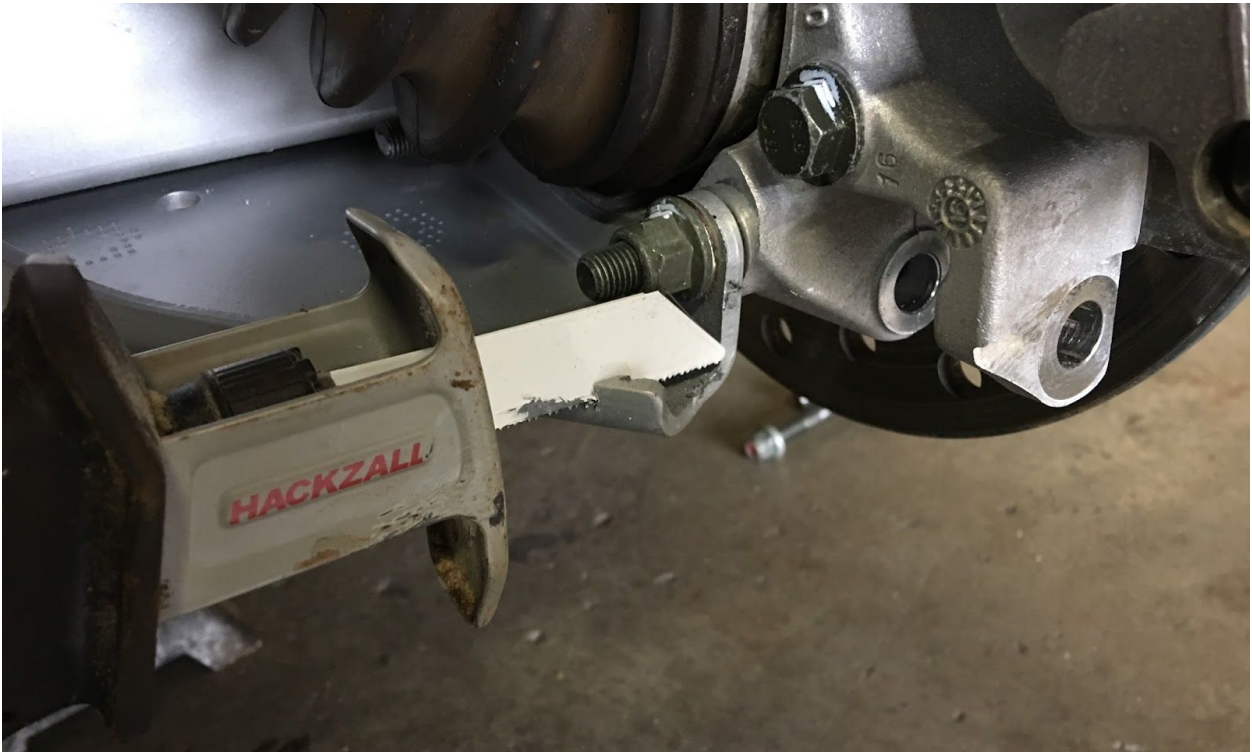


6. After you get your measurements set, finger tighten the jam nuts against the rod body for instal. The jam nuts will get tightened once the vehicle is assembled and on the ground.

7. Now that the measurements of your upper radius rods are set you can instal onto your vehicle, using the thicker misalignment spacers on the frame side rod ends, and the thinner misalignment spacers on the hub side rod ends. Reuse the factory 18mm bolt and nylock nut to secure. Tighten nut firmly.
8. If you have both of your new upper radius rods installed, you can now move onto the lower rods. Again one at a time to keep your suspension in place. Same hardware applies 18mm bolt and nut will be removed to free the rods. This is where a Pry bar may come in handy to remove the lower radius rod from the from mount point and the rear cage or bumper.
9. When you have your first lower radius rod removed from your vehicle you will now need to trim a small corner of metal off of the edge of your factory trailing arm. If you have aftermarket trailing arms you may be able skip this step.



10. About  $\frac{1}{4}$ " of material will need to be removed, note the edge at the tip of the pen.



11. As you can see, in this installation we used a hacksaw with short metal blade. Cutting downward to remove the necessary amount of material. This modification will not in any way compromise the strength of your factory trailing arms.

12. Use a metal file to clean up the edges then apply primer or paint to keep the exposed steel from rusting.



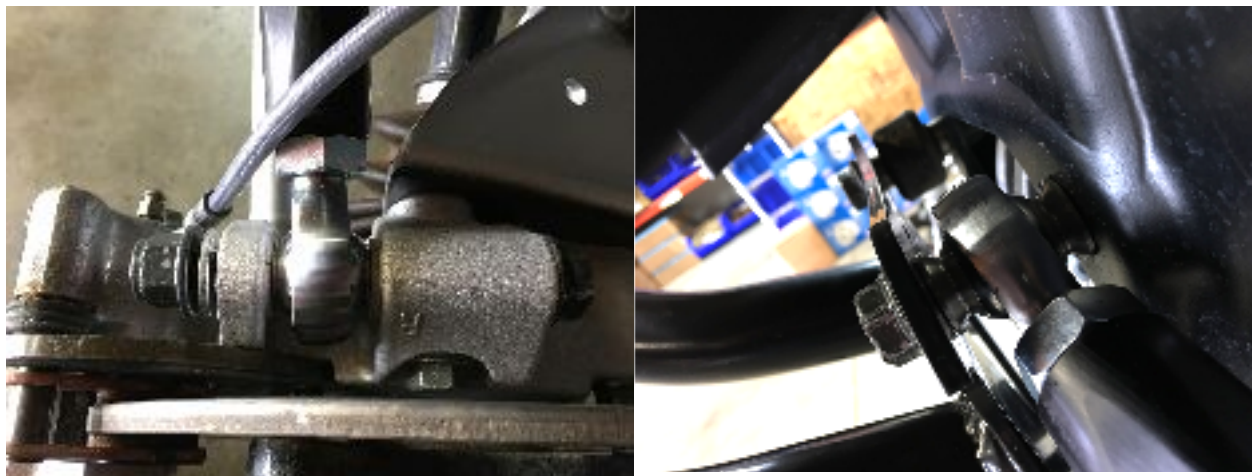
13. Once this step is complete your new high clearance radius rods will have plenty of room as the suspension cycle.

14. Measure the lower radius rod to match length just as with the uppers.



15. As in the photo above you can see the inside mount point at the frame uses the thicker aluminum spacers inside the delrin bushing. Finger tighten rod body jam nut, then instal.

16. After all 4 radius rods are installed, Tighten all 18mm bolts and nuts firmly, reinstall wheels and slowly lower vehicle to the ground.



17. Note spacer placement in the photos above, It is important to align rod ends vertically and centered so they have plenty of room to move as the suspension cycles.



18. Now that your RZR is on the ground and lug nuts are torqued properly. Roll or drive back and forth 10 - 20 feet to allow the suspension to settle. Now you can verify your rear alignment. After alignment is within spec tighten rod body jam nuts.
19. Double check all hardware, including jam nuts. **It is extremely important to check and retorque your suspension hardware often, especially your rod end jam nuts before every ride!**
20. Enjoy your new Kryptonite High Clearance radius rods

If you have any problems with your products. Please visit our website for more information, and sure sure to register your products for complete warranty coverage.



[WWW.KRYPTONITEPRODUCTS.COM](http://WWW.KRYPTONITEPRODUCTS.COM)