

INSTALLATION GUIDE



**SINISTER
DIESEL**

Bed Step Delete

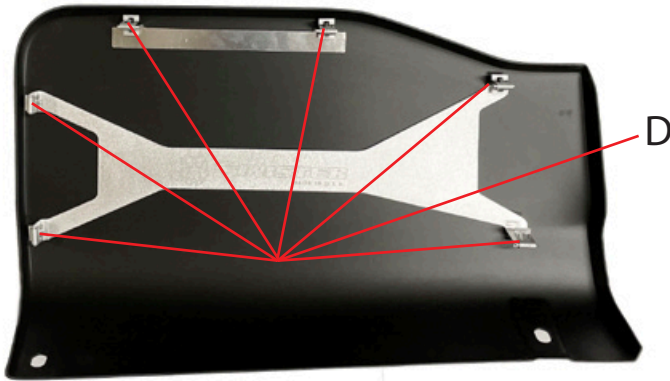
2023+ Ford 6.7L Powerstroke





DISCLAIMER

- 1) By installing this product onto your vehicle, you assume all risk and liability associated with its use.
 - 2) It is your responsibility to make sure your vehicle complies with all federal, state, and local emissions laws. Federal and many state and local laws prohibit the removal, modification or rendering in-operative of any part of the design affecting emissions or safety on motor vehicles used on a public street or highway. Violation may result in a fine of up to \$32,500 per vehicle (or possibly higher depending on changes in the law). All civil penalties and fines for removing your vehicle's emissions equipment are the sole responsibility of the end user.
 - 3) Due to its high performance nature, this product may void vehicle manufacturer's warranty.
 - 4) Sinister Mfg Company, Inc. is not responsible for misuse of its products. By installing this product, you release Sinister Mfg Company, Inc. of any and all liability associated with its use.
 - 5) Depending on where you live, restrictions may apply. Check all applicable laws before installing or using!
 - 6) The purchaser and end user releases, indemnifies, discharges and holds harmless Sinister Mfg Company, Inc. from any and all claims, damages, causes of action, injuries, or expenses resulting from or relating to the use or installation of this product that is in violation of the terms and conditions on this page, the product disclaimer, and/or the product installation instructions. Sinister Mfg Company, Inc. will not be liable for any direct, indirect, consequential, punitive, statutory, or incidental damages or fines caused by the use or installation of this product.
-



ALL PARTS ARE PRE-INSTALLED

PART:	DESCRIPTION:	QTY:
A	Bed Step Delete Panels* (Left & Right)	2
B	Top Tab Bracket	2
C	Main Backing Plate Bracket	2
D	Retaining Clips	12

***Panels come 'paintable' and may have some minor imperfections out of the box before necessary prep is done.**

If you have any issues regarding this product, or if it arrives with missing parts please contact Sinister Diesel directly at (916) 772-9253

IMPORTANT: READ ALL INSTRUCTIONS PRIOR TO INSTALL. Prior to installation, please compare the parts that you have received with the bill of materials provided on this page to assure that you have all the parts necessary for the installation.



CAUTION !!! Never work on a hot vehicle. Serious injury in the form of burns can result if the vehicle has been in use. Allow vehicle to cool prior to installation. Always wear eye protection when working on or under any vehicle.

- 1** Remove factory step; Step is held in place by four bolts, two on the front and two on the rear. (Image 1 & 2)



IMAGE 1



IMAGE 2

- 2** Remove push clip on the bottom of the factory plastic trim. (Image 3)



IMAGE 3

- 3** Remove the bolt (7mm) on the bottom, opposing side, of the factory plastic trim. (Image 4)



IMAGE 4

- 4** Remove plastic trim from the vehicle; Held in place by six body clips. Trim pops off, but it may be helpful to reach on the backside and push the clips through the body. (Image 5)

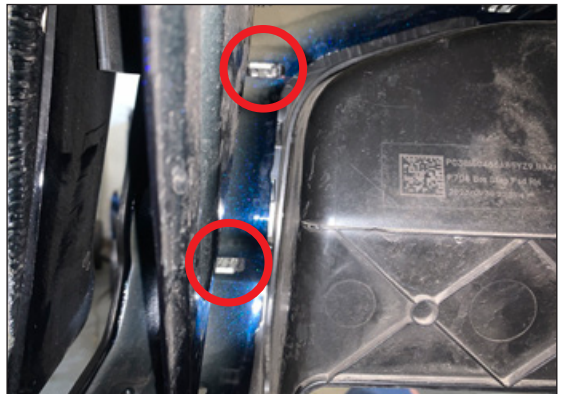


IMAGE 5

5 Align tabs/clips with the slots in the vehicle and press the Sinister Bed Step Delete into place. (Image 6 & 7)

6 Re-install bolt and push clip on the bottom of the Sinister Bed Step Delete.

7 Repeat steps on opposite side of vehicle.

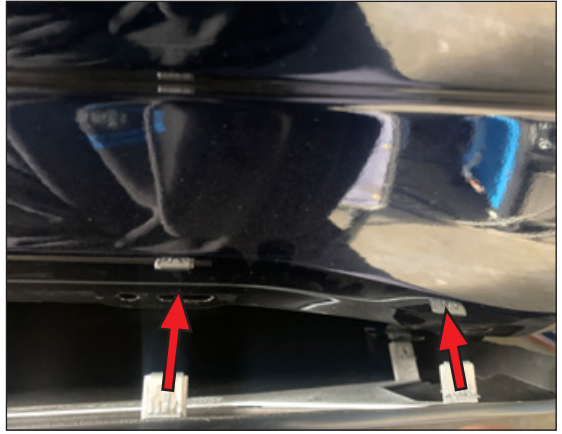


IMAGE 6



IMAGE 7



#1 IN PERFORMANCE PARTS & KITS

2025 OPPORTUNITY DR. ROSEVILLE, CA 95678 SINISTERDIESEL.COM