

INSTALLATION GUIDE



Billet Catch Can

2003-2007 Ford Powerstroke 6.0L





DISCLAIMER

1) By installing this product onto your vehicle, you assume all risk and liability associated with its use.

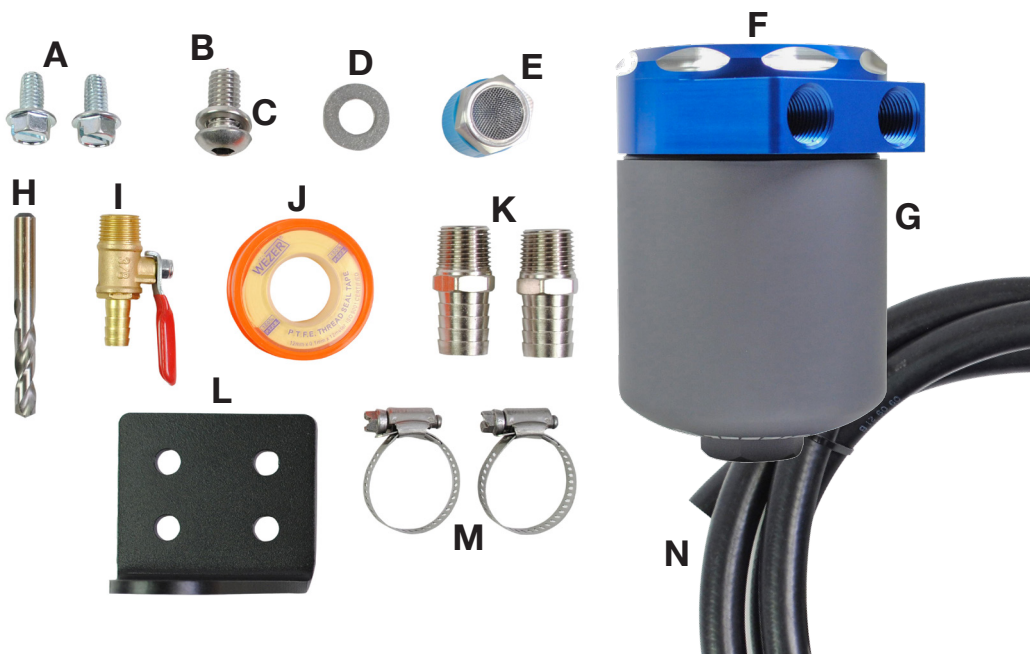
2) It is your responsibility to make sure your vehicle complies with all federal, state, and local emissions laws. Federal and many state and local laws prohibit the removal, modification or rendering inoperative of any part of the design affecting emissions or safety on motor vehicles used on a public street or highway. Violation may result in a fine of up to \$32,500 per vehicle (or possibly higher depending on changes in the law). All civil penalties and fines for removing your vehicle's emissions equipment are the sole responsibility of the end user.

3) Due to its high performance nature, this product may void vehicle manufacturer's warranty.

4) Sinister Mfg Company, Inc. is not responsible for misuse of its products. By installing this product, you release Sinister Mfg Company, Inc. of any and all liability associated with its use.

5) Depending on where you live, restrictions may apply. Check all applicable laws before installing or using!

6) The purchaser and end user releases, indemnifies, discharges and holds harmless Sinister Mfg Company, Inc. from any and all claims, damages, causes of action, injuries, or expenses resulting from or relating to the use or installation of this product that is in violation of the terms and conditions on this page, the product disclaimer, and/or the product installation instructions. Sinister Mfg Company, Inc. will not be liable for any direct, indirect, consequential, punitive, statutory, or incidental damages or fines caused by the use or installation of this product.



| PART: | DESCRIPTION: | QTY: |
|----------|---------------------------------|----------|
| A | 3/8"x 3/4" Thread Cutting Bolt | 2 |
| B | 1/2"-13 x 1" Button Head Bolt | 1 |
| C | 1/2" Washer | 1 |
| D | 1/2" Lock Washer | 1 |
| E | 3/4" NPT Vent Plug | 1 |
| F | Catch Can Block (Blue) | 1 |
| G | Catch Can (Gray) | 1 |
| H | Drill Bit | 1 |
| I | 1/4" NPT x 3/8" Barb Ball Valve | 1 |
| J | Yellow Teflon Tape | 1 |
| K | 1/2" NPT x 1" Barb | 2 |
| L | Catch Can Bracket | 1 |
| M | Hose Clamps | 2 |
| N | 1"x10' Universal Fuel Hose | 1 |

IMPORTANT: READ ALL INSTRUCTIONS PRIOR TO INSTALL. Prior to installation, please compare the parts that you have received with the bill of materials provided on this page to ensure that you have all the parts necessary for the installation.



CAUTION !!! Never work on a hot vehicle. Serious injury in the form of burns can result if the vehicle has been in use. Allow vehicle to cool prior to installation. Always wear eye protection when working on or under any vehicle.

1 Disconnect batteries.

2 Locate your factory CCV hose that connects the engine to the intake tube, cut crimped clamp and remove factory hose. (Image 1)

3 Start by locating the driver side frame rail location for the catch can bracket (L). It is right behind the bumper mount. (Image 2)

4 There is one pre-existing hole. Mark and drill additional mounting hole with supplied drill bit (H).

5 Now, using a 13mm socket or wrench, use supplied thread cutting bolts (A) and secure the catch can mounting bracket (L). (Image 2)



IMAGE 1

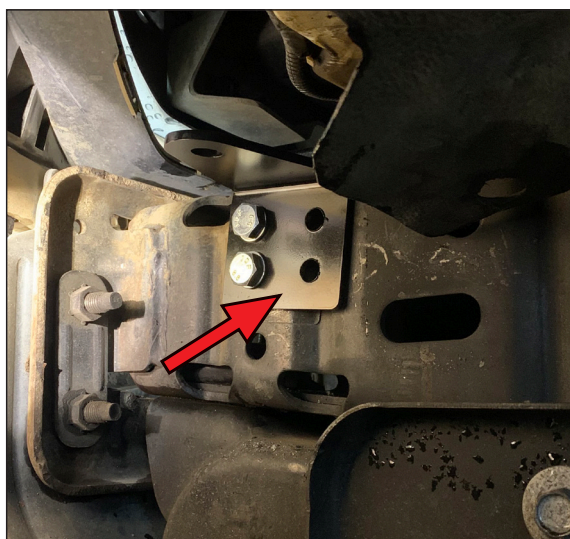


IMAGE 2

-- 6 Install mesh vent plug (E) into catch can block (F). (Image 3)

7 Install supplied barb fittings (K) with yellow Teflon tape (J) into catch can block. (Image 4)

8 Using supplied 1/2" button head bolt (B), lock washer (D) and washer (C), attach catch can block (F) to the bracket (L), be sure to clock the top so that the fittings are accessible. (Image 5)

9 Using supplied hose (N), connect end to the motor side of where the CCV hose was removed, route hose, careful not to create any kinks, to the inlet port of the catch can block (F) (Image 5) and secure with supplied hose clamp (M).

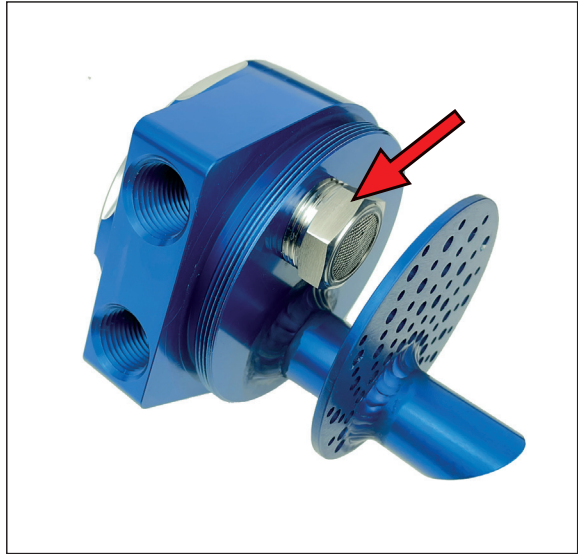


IMAGE 3

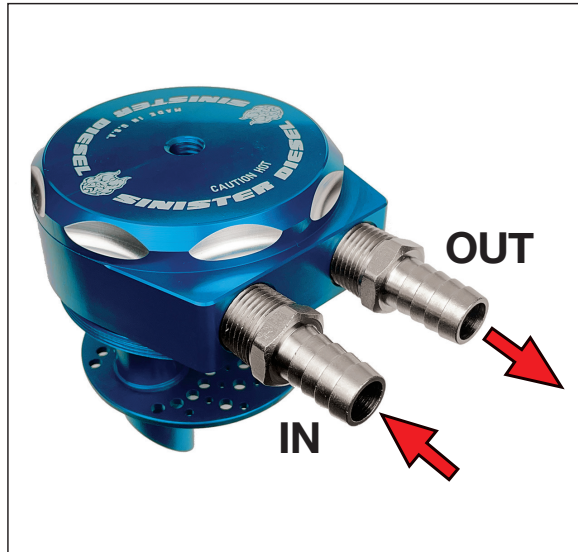


IMAGE 4

- 10** Using more of the supplied hose (N), secure end with a hose clamp (M) to the outlet port of the catch can block (F) (Image 5), and route to the intake side of where the CCV hose was removed and secure hose.



IMAGE 5

- 11** Install drain valve (I) with yellow Teflon tape (J) to the bottom of the catch can (G) (Image 6)

- 12** Apply some oil or light grease to the threads and O-ring of the catch can block (F) and install catch can (G) to the block. Hand-tighten only. (Image 5)



IMAGE 6

Installation of your Sinister Diesel Billet Catch Can is complete.

Make sure to dispose of any oil in the catch can in an appropriate manner. Use an oil recycling or oil waste disposal service.



SD-BCC-6.0

2023



#1 IN PERFORMANCE PARTS & KITS

2025 OPPORTUNITY DR. ROSEVILLE, CA 95678 SINISTERDIESEL.COM 888.966.6543