

UNIVERSAL HEADACHE RACK MOUNTING INSTRUCTIONS

**** DO NOT TIGHTEN FASTENERS FROM BOLT HEAD SIDE. ONLY TIGHTEN FROM THE NUT SIDE OF THE FASTENER.****
(THIS PREVENTS THE HEAD OF THE BOLT FROM SPINNING AND WEARING THROUGH THE POWDER COAT AND CAUSING FUTURE RUST)

TOOLS NEEDED

Drill or impact with socket adaptor

3/4, 5/8, 9/16, 1/2 wrench

7/32, 3/16 Allen key

9/16, 1/2 deep socket

Ratchet

STEP 1

Firmly tighten the ½ x3 bolts to the top of the bed side then tighten jam nuts.

Pick any 1 of the 4 holes provided to install 5/16 self tapping bolt. 1 per side.



STEP 2

Choose the desired height of your new headache rack by installing any pair of our mounting plates. For the lowest possible height you can mount rack side directly to the cleat.



STEP 3

Install the bag of 4 aluminum sleeves into the top headache rack bar.



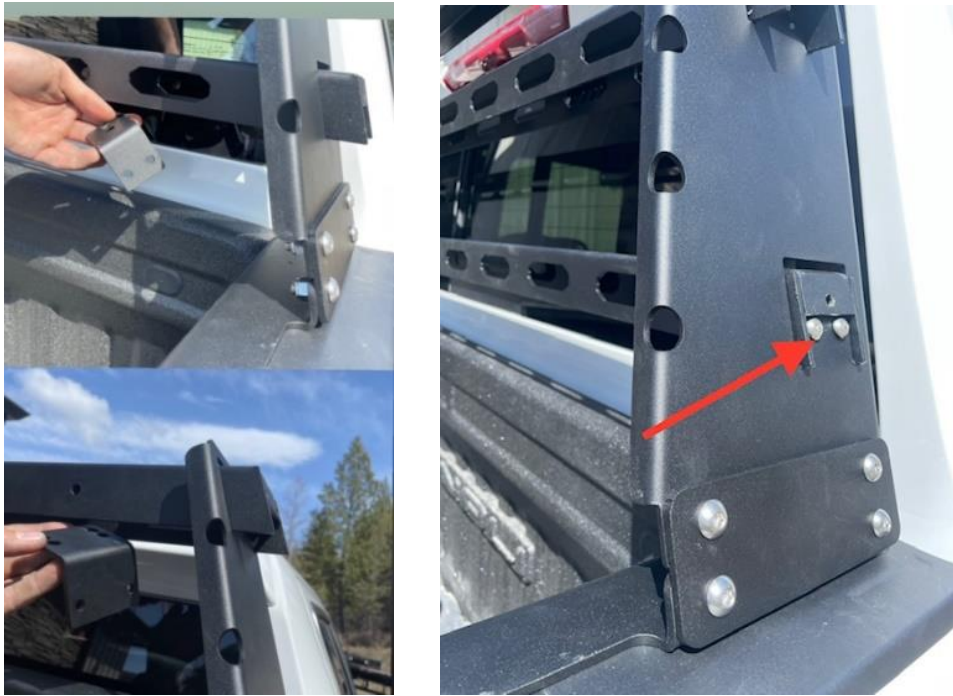
Slide in cross bars. Longest on the bottom, shortest on the top.

****Note that all holes on cross bars need to face the rear window of the truck****



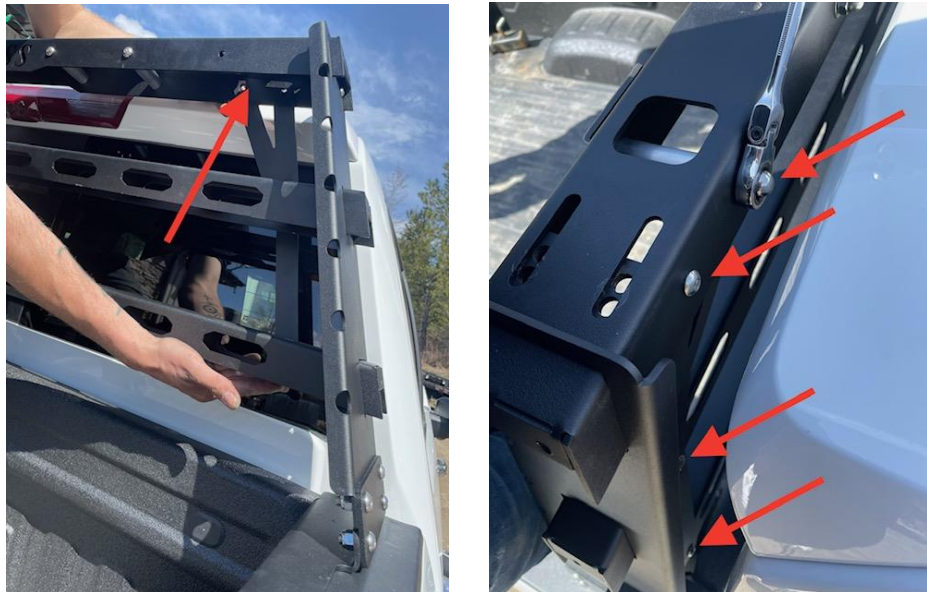
Step 4

Install angle bar mount cleats to the side of the headache rack using the 5/16 x 1 bolts.



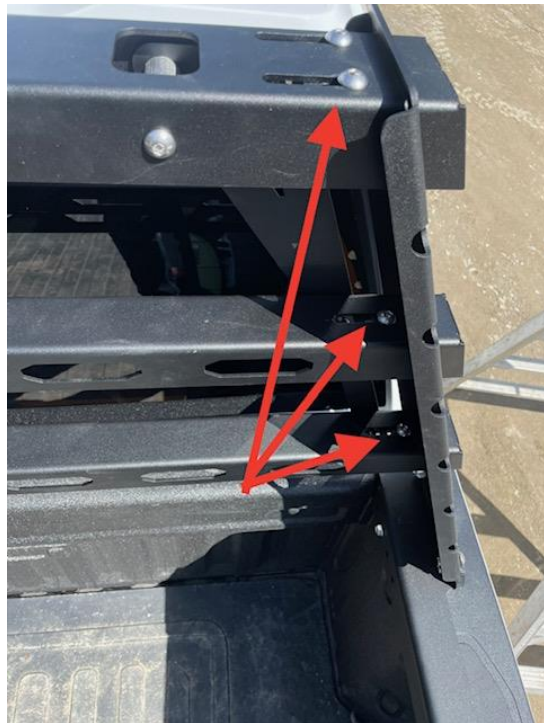
Step 5

Install left and right back brace and outer aluminum sleeves. **the brace goes on the inside of the top bar. This is why there are 2 aluminum sleeves cut slightly shorter.**



Step 6

Align cross bars so there is the same distance out each side. Use 3/8 x 1 bolts, tighten



Step 7

Install trim and send us a picture! Thank you for choosing Limitless!

