

[SHOP BY VEHICLE](#)

# INSTALL INSTRUCTIONS FOR 75-5086

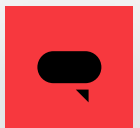
[PRINT](#)

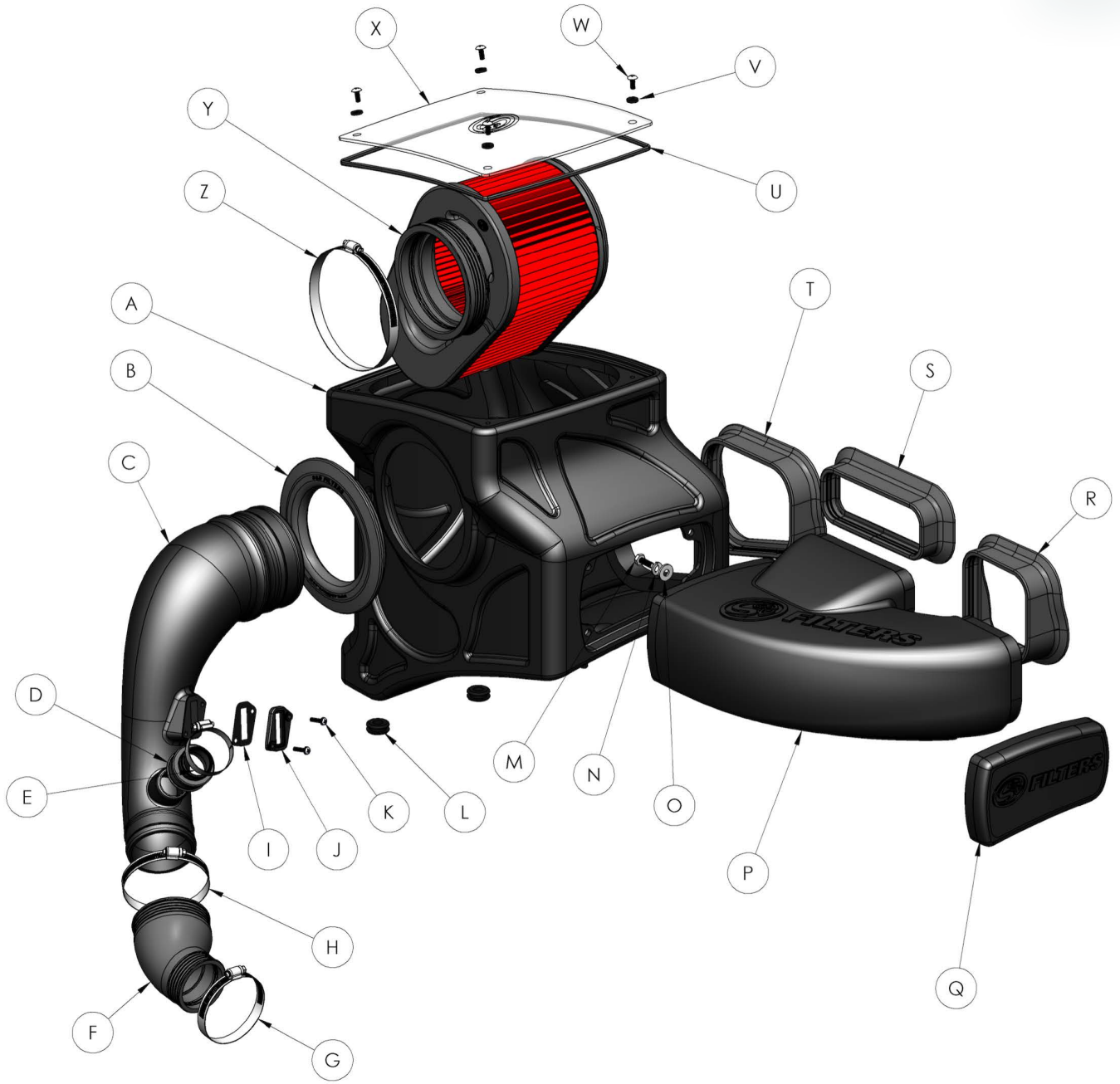
## BEFORE YOU START

- Please read the entire product guide before proceeding.
- Ensure all parts are present.
- If you are missing any of the components, call our customer support at (909) 947-0015.
- Do not work on your vehicle while the engine is hot.
- Make sure the engine is turned off and the vehicle is in Park or the Parking Brake is set.
- Note: This intake kit may not fit with the following Aftermarket Parts installed: Body Lift or Lowering Kit, Custom Hood, Throttle Body Spacer / Upgrade

## REQUIRED TOOLS

- 10mm and 11mm Wrench/Socket
- 5/16" Nut Driver or Flat Blade Screwdriver
- T20 Torx Key (Supplied)
- Phillips Screwdriver)





ITEM	QTY	DESCRIPTION	PART NUMBER
A	1	AIR BOX	AL1260-00
B	1	TUBE SEAL	Al1650C-00
C	1	INTAKE TUBE	AL1261-00
D	1	BREATHER HOSE ADAPTER	Al1828C-00
E	1	HOSE CLAMP, #24	AG1017-00
F	1	COUPLER	Al1856C-00
G	1	HOSE CLAMP, #44	AG1006-00
H	1	HOSE CLAMP, #52	AG1007-00
I	1	MAF GASKET	Al1823-00
J	1	MAF PAD	Al1822-00
K	2	SCREW, SEMS, 8/32" x 3/4"	Al1837-00
L	2	AIR BOX GROMMET	Al1563-00
M	4	SCREW, HEX, 1/4-20 x 3/4"	Al1068-00
N	4	LOCK WASHER, 5/16"	Al1309-00
O	4	FLAT WASHER, 5/16"	Al1073-00
P	1	AUXILIARY SCOOP	AL1262-00
Q	1	BOX PLUG	AL1263-00
R	1	SCOOP FENDER SEAL #2	Al1827C-00
S	1	SCOOP FENDER SEAL #1	Al1826C-00
T	1	AIR BOX FENDER SEAL	Al1825C-00
U	1	LID SEAL	Al1766-04
V	4	LID WASHER	Al2006-00
W	4	SCREW, FLAT, #10-24 X 1/2"	Al2005-00
X	1	CLEAR LID	Al1893-00
Y	1	AIR FILTER	KF-1064
Z	1	HOSE CLAMP, #80	AG1010-00
ITEMS BELOW ARE NOT SHOWN IN THE EXPLODED VIEW			
AA	1	T20 TORX KEY	Al1327-00

## HARDWARE PACKS

HP1442-00  
 AG1017-00  
 AG1006-00  
 AG1007-00  
 HP1295-00  
     Al2005-00  
     Al2006-00  
 HP1188-00  
     Al1068-00  
     Al1309-00  
     Al1073-00  
 HP1444-00  
     Al1563-00  
     Al1327-00  
 HP1407-00  
     Al1837-00  
     Al1822-00  
     Al1823-00  
 HP1443-00  
     Al1893-00  
     Al1766-04

AM0321-00 REV-G 07/25/2018

## STEP 1

With the ignition switched off and the parking brake set, disconnect the negative battery cable on the passenger's side with a 10mm Socket/Wrench.

**IMPORTANT:** Failure to disconnect the battery for a minimum of 2 hours may cause the Check Engine Light to illuminate upon completion of the installation or subsequent operation. **DO NOT SKIP THIS STEP!**



## STEP 2

Disconnect the MAF sensor harness from the sensor. Disengage the red locking clip and press down the tab to remove.





### STEP 3

Remove the wire loom clip from the stock intake box lid.



### STEP 4

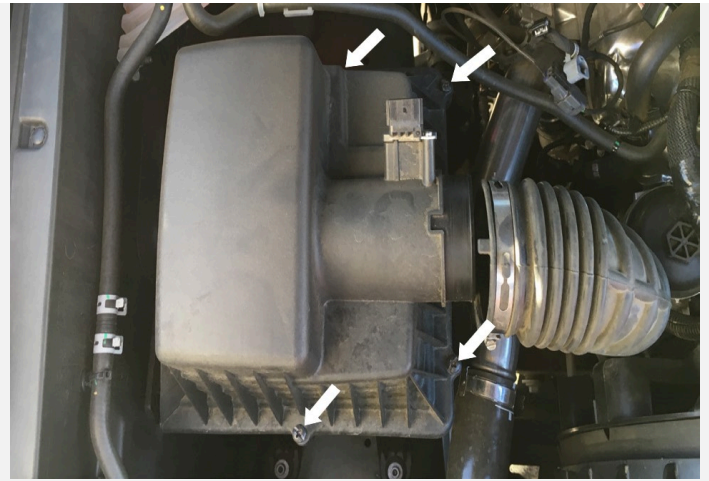
Use a 5/16" Nut Driver to loosen the stock hose clamp and pull the stock intake tube away from the stock intake box lid.



### STEP 5

Loosen the four screws securing the stock intake box lid with a Phillips Screwdriver, then remove both the stock

intake box lid and stock air filter.



## STEP 6

Use a 10mm Socket/Wrench to remove the two mounting nuts securing the stock intake box. Set the mounting nuts aside, they will be reused in Step 25.



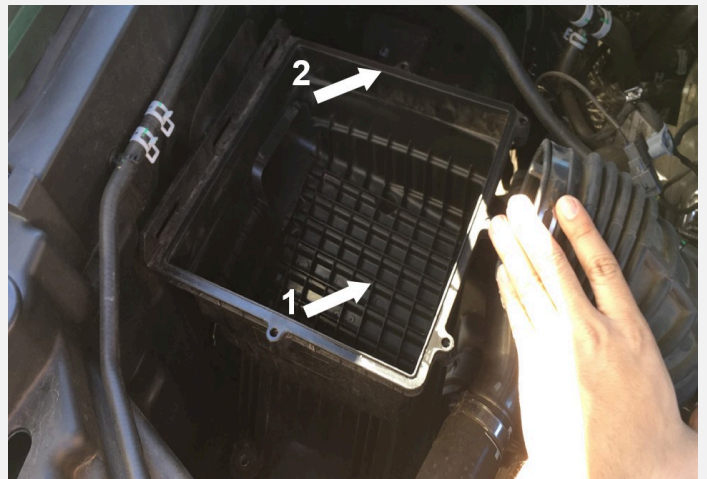
## STEP 7

Disconnect the stock air inlet from the stock intake box by squeezing in the tabs.



## STEP 8

Remove the stock intake box from the vehicle, then remove the stock air inlet from the fender wall. Be careful not to pull too hard when removing the stock intake box. Remove a section of the intercooler piping for more clearance if necessary.

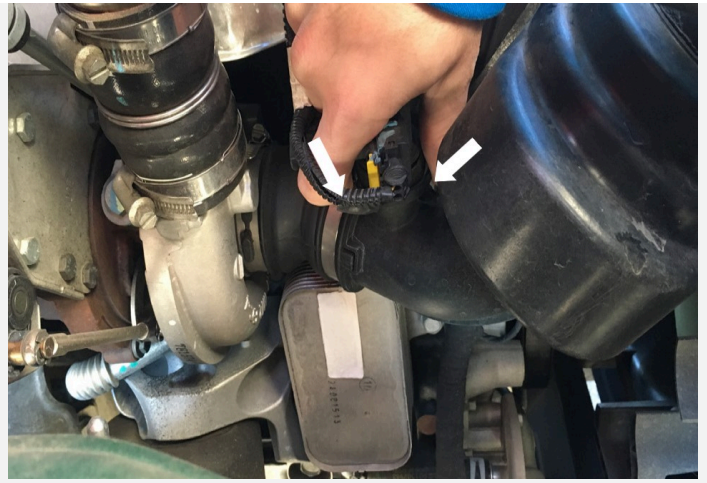


## STEP 9

Remove the intercooler pipe if needed. Disconnect the breather hose connection

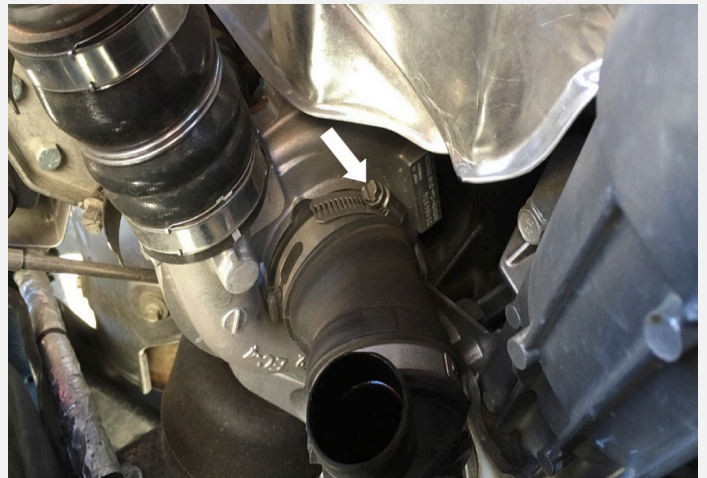


from the stock intake tube.  
Squeeze the tabs to remove.



## STEP 10

Loosen the hose clamp at the turbo inlet, then remove the stock intake tube from the vehicle.



## STEP 11A

Determine if you want to install the Box Plug (W) onto the Airbox (A) or leave it open. See the “Air Box Plug” note for more information.





## STEP 11B

(Optional) Using the supplied T20 Torx key, remove the three screws securing the front passenger fender liner and carefully pull it down from the fender. This will give access to the stock air duct.



## STEP 11C

(Optional) Using a panel popper or flat head screwdriver, remove the two clips securing the stock air duct to the fender wall, then remove the stock air duct from the vehicle. Once the stock air duct is removed, return the fender liner to its original position and secure using the three screws removed in Step 11b.



## STEP 12

Remove the metal bushings from the stock intake box.



## STEP 13

Install the Airbox Grommets (L) into the Airbox (A).



## STEP 14

Install the metal bushings removed in Step 12 into the Airbox Grommets (L).



## STEP 15

Insert the Airbox Fender Seal (T) into the Airbox (A).



## STEP 16

Install the Tube Seal (B) onto the Airbox (A).





## STEP 17

Carefully remove the MAF sensor from the stock intake box lid with a T20 Torx. Use the supplied 8-32 Screws (K), MAF Pad (J), Gasket (I) to install the sensors onto the Intake Tube (C) with a Phillips Screwdriver. Do not over tighten.



## STEP 18

Install the Breather Hose Adapter (D) and Hose Clamp #24 (E) onto the Intake Tube (C). Tighten the hose clamp with a 5/16" Nut Driver or Flat Blade Screwdriver.





## STEP 19

Insert the Intake Tube (C) into the Airbox (A). The intake tube stop bead should meet up to the Tube Seal (B).



## STEP 20

Determine if you want to install the Box Plug (Q) "Step 20" or Auxiliary Scoop (P) "Step 21" onto the Airbox (A). See the "Air Box Plug" note to decide the desired setup. To install the box plug, install the 1/4-20 Screws (M), Lock Washers (N), and Washers (O) with a 10mm Socket/Wrench from inside the airbox then proceed to Step 22.



## STEP 21

To install the Auxiliary Scoop (P), first install the Scoop Fender Seal #1 and #2 (S & R) onto the auxiliary scoop. Place the Auxiliary Scoop (P) into the truck underneath the coolant tank. The Auxiliary Scoop (P) will be secured to the Airbox (A) later, in Step 24.



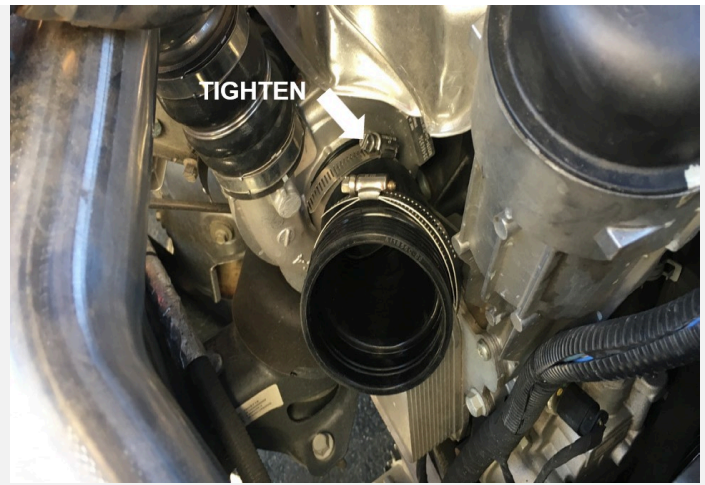
## STEP 21 (IMAGE 2)



## STEP 22

Install the Coupler (F) onto the turbo with the #44 and #52 Hose Clamps (G & H). Try

to get the angle of the coupler as shown below. Tighten the hose clamp at the turbo, leave the other one loose.



## STEP 23A

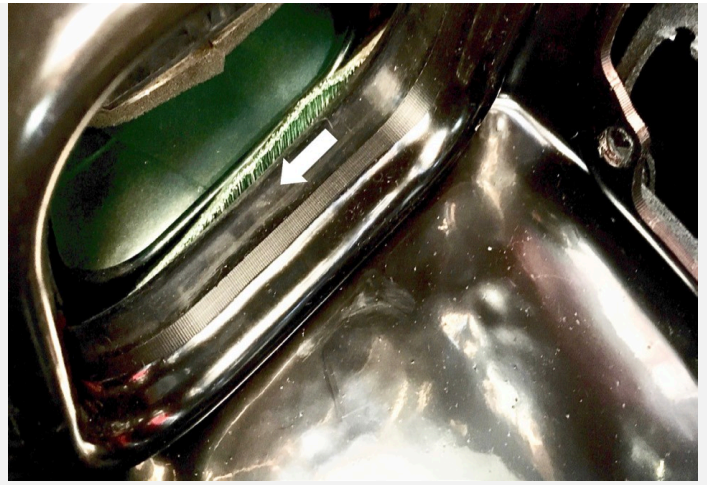
Place the Airbox (A) assembly into the truck and connect the Air Tube (C) into the Coupler (F). Ensure that the threaded studs go through the Grommets (L) and Metal Bushings installed in Steps 13 and 14.



## STEP 23B

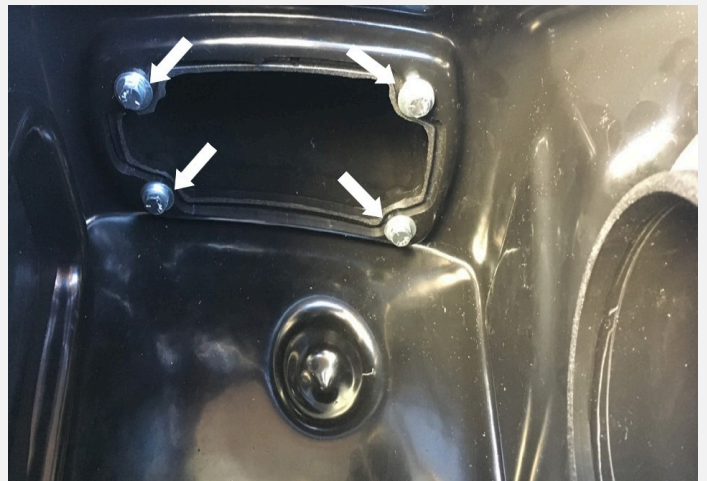
Make sure the Airbox Fender Seal (T) is sitting flat against the fender wall and not being pushed upward.





## STEP 24

Skip to Step 25 if you installed the Box Plug (Q) in Step 20. If you installed the Auxiliary Scoop (P) use install the 1/4-20 Screws (M), Lock Washers (N), and Washers (O) with an 11mm Socket/Wrench from inside the Airbox (A).



## STEP 25

Use a 10mm Socket/Wrench to reinstall the two mounting nuts removed in Step 6.





## STEP 26

Make sure that the Air Tube (C) is in the Coupler (F) and tighten the #52 Hose Clamp (H).



## STEP 27

Connect the breather hose into the Breather Hose Adapter (D) and MAF sensor harness back into the sensor. Engage the red locking clip. Give the breather hose a little tug to make sure that it is secure.



## STEP 28

Place the Air Filter (Y) into the Airbox (A). Rotate the air filter into position as shown below and tighten the #80 Hose Clamp (Z)



## STEP 29

Press the Lid Seal (U) into the groove on top of the Airbox (A).



## STEP 30

Remove the protective covering on the Clear Lid (X).



## STEP 31

Install the Clear Lid (X) onto the Airbox (A) with the 10-24 Screws (W) and Lid Washers (V) using a Screwdriver.



## STEP 32

Reconnect the negative terminal on the battery.

Inspect your installation, make sure the kit is properly positioned and all fasteners are secure. Keep all stock parts in case you ever need to reinstall the stock intake assembly. Affix the ID label near the intake kit. The installation is now complete.





