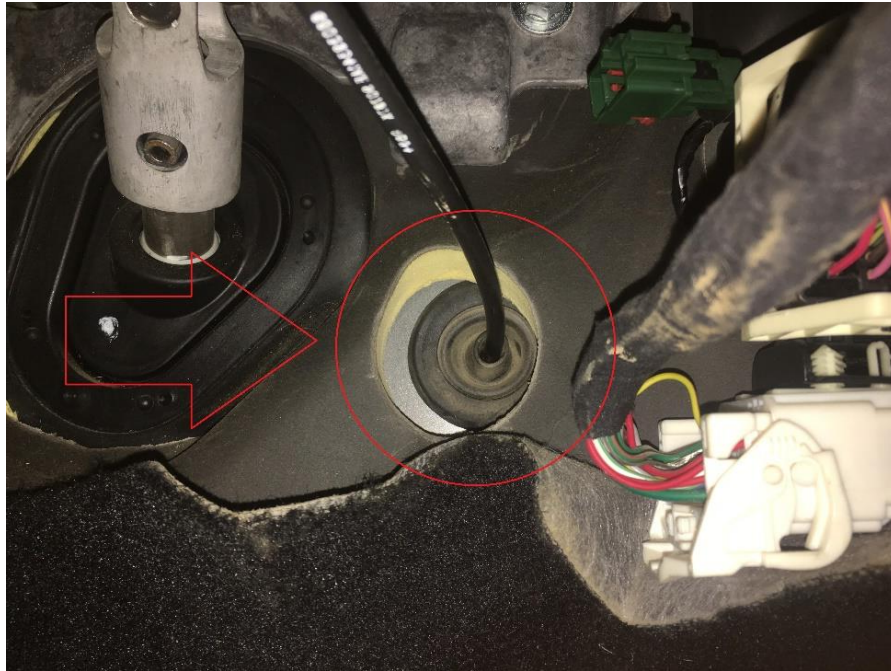


CUMMINS EZ-Lynk SOTF Switch Install

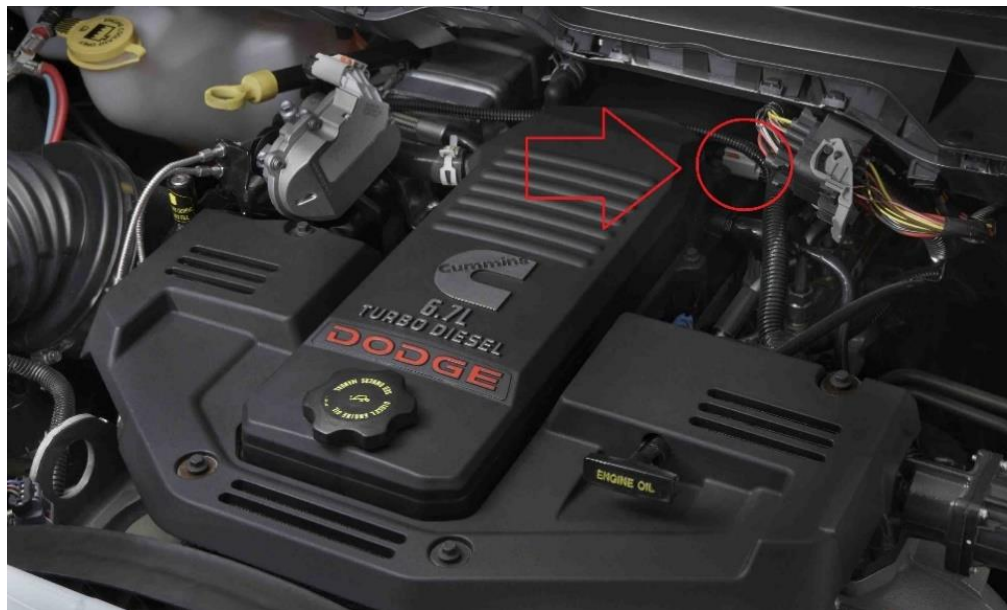
1. Under the dash look for the grommet in **Picture 1**.

Picture 1



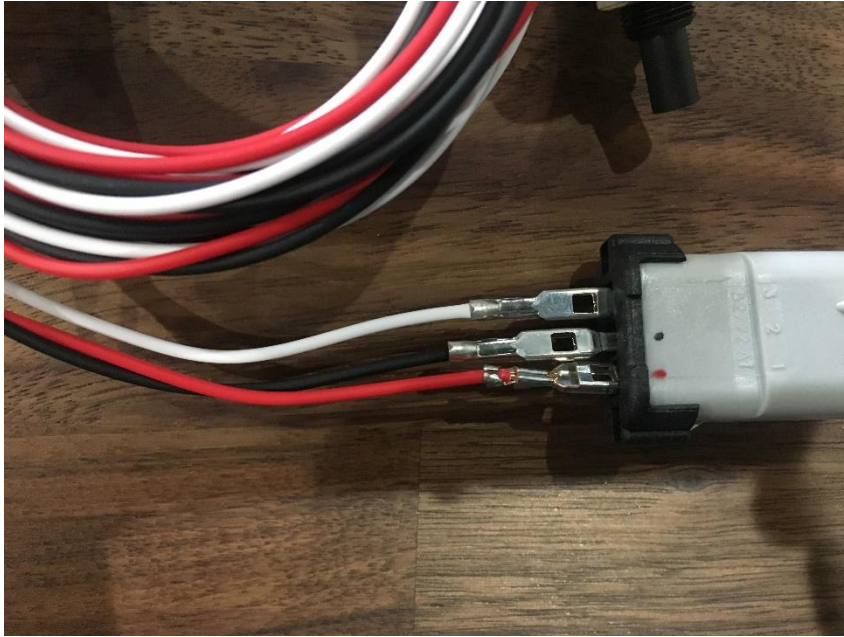
2. Once you have located grommet, pull the grommet out or create a small hole in the grommet to pass through the wires from the switch.
3. After the wires are through the firewall, route the wires along the firewall to the crankcase pressure sensor located on the drivers' side rear of the valve cover as shown in **Picture 2**.
4. Unplug the crankcase pressure sensor.

Picture 2



5. Insert the wires from the switch into the supplied connector as shown in **Picture 3**. You should hear/feel a click when the pins are locked in.

Picture 3



6. Plug the switch connector into the crankcase pressure sensor harness unplugged in step 4.
7. Tuck the wiring from the switch into the supplied wire loom.
8. Apply electrical tape to the end of the wire loom to ensure it can not come loose from the wires.
9. The switch is now installed. You may mount the switch anywhere in the cab you desire.