

| Item | Description | Part # | Qty. |
|------|------------------|--|------|
| 1 | Front Tailpipe | 53787/53819 (2017-2019)/(2020-2022) | 1 |
| 2 | Rear Tailpipe | 53786 | 1 |
| 3 | Tip, Tailpipe | 52762/52763 | 1 |
| 4 | Exhaust Clamp 5" | 52473 | 2 |
| 5 | Exhaust Clamp 4" | 52481 | 1 |
| 6 | M14x12 Plug | 62248 | 1 |
| 7 | M16x12 Plug | 62249 | 1 |
| 8 | M16 Washer | 62250 | 1 |

Bill of Materials

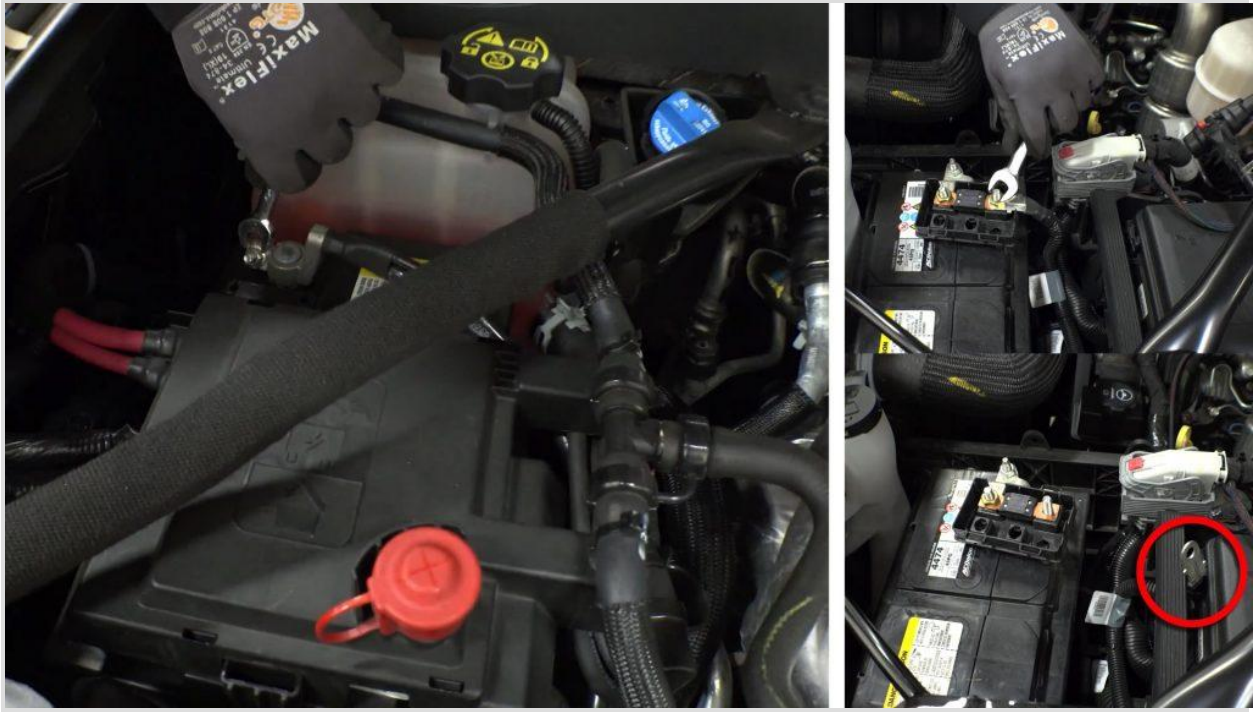
General Installation Practices

General Installation Practices -

1. Before starting, familiarize yourself with the installation procedure by reading all of the instructions.
2. The exploded view (**Figure 2**) provides only general guidance. Refer to each step and section diagram in this manual for proper instruction.
3. Throughout this manual, the left side of the vehicle refers to the driver's side, and the right side to the passenger's side.
4. Disconnect the negative (ground) cable from the battery (or batteries, if there are two) before starting.
5. Route and tie wires and hoses a minimum of 6" away from exhaust heat, moving parts and sharp edges. Clearance of 8" or more is recommended where possible.
6. When raising the vehicle, support it on properly weight-rated safety stands, ramps or a commercial hoist. Follow the manufacturer's safety precautions. Take care to balance the vehicle to prevent it from slipping or falling. When using ramps, be sure the front wheels are centered squarely on the topsides; put the transmission in park; set the hand brake; and place blocks behind the rear wheels.

Caution! Do not use floor jacks to support the vehicle while working under it. Do not raise the vehicle onto concrete blocks, masonry or any other item not intended specifically for this use.
7. During installation, keep the work area clean. Do not allow anything to be dropped into intake, exhaust, or lubrication system components while performing the installation, as foreign objects will cause immediate engine damage upon start-up.

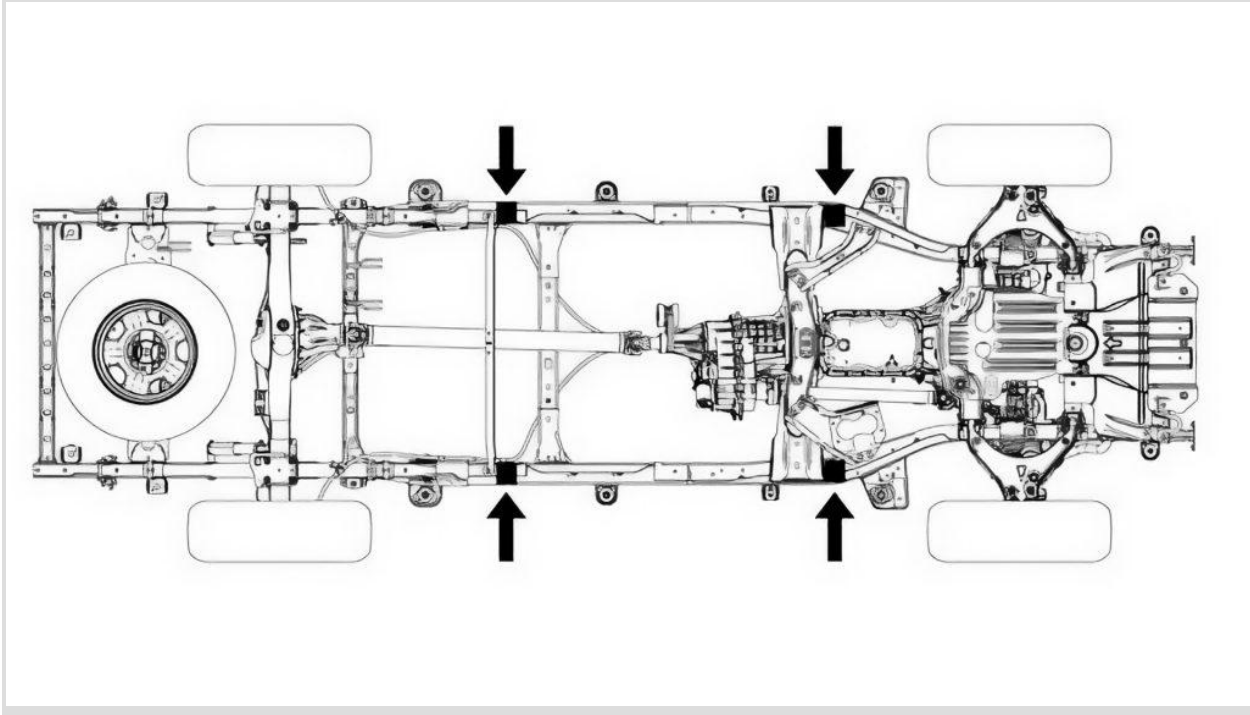
Monster Exhaust System Installation



1. Disconnect the battery(s).

As a precaution, disconnect the ground of the battery (if there is more than one battery, disconnect both.)

Tuck the cable out of the way to prevent contact with the battery.



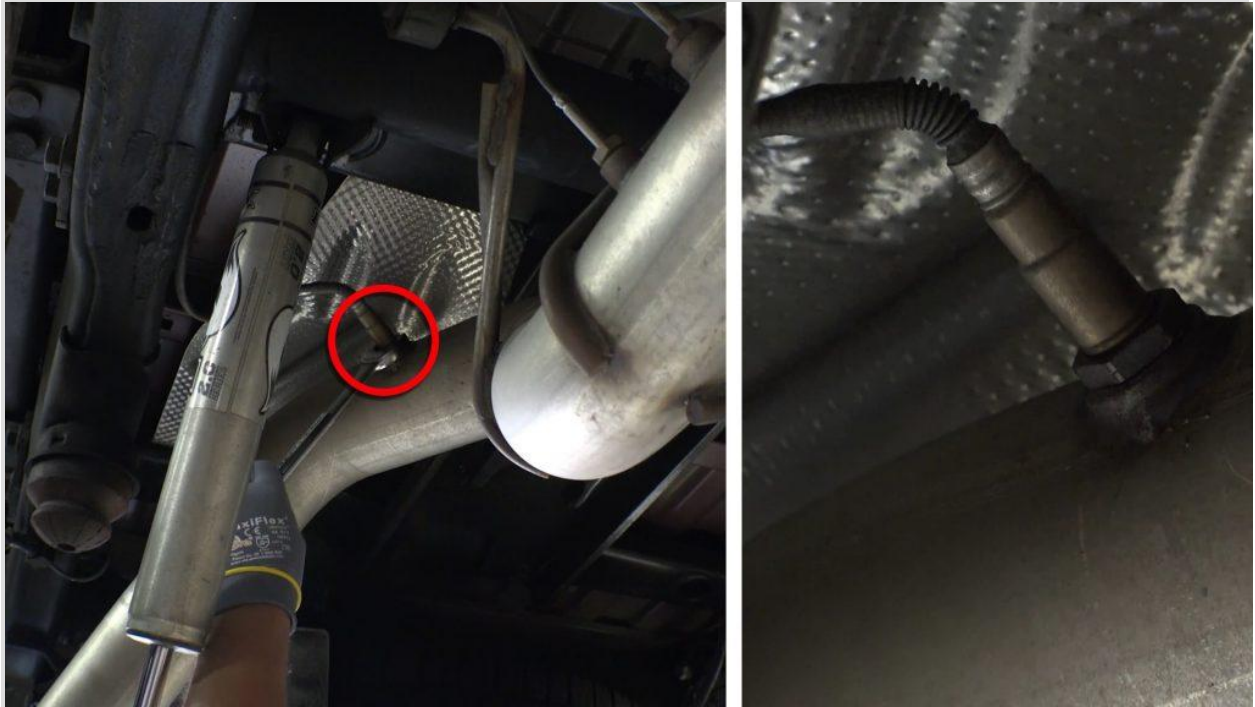
2. Raise the vehicle and support it with properly weight rated safety stands, ramps or a commercial hoist.

Follow the manufacturer's safety precautions and take care to balance the vehicle to prevent it from slipping or falling.

When using ramps, be sure the front wheels are centered squarely on the ramps; place the transmission in park; set the parking brake, and place blocks behind the rear wheels.

CAUTION: DO NOT WORK UNDER ANY VEHICLE SUPPORTED ONLY

BY A JACK. SEVERE INJURY MAY RESULT.



3. Remove the NOx sensor from the over-axle pipe using a 24mm wrench.

NOTE: If the sensors appear to be rusted and/or seized, soak for a few hours in rust penetrating oil or equivalent.

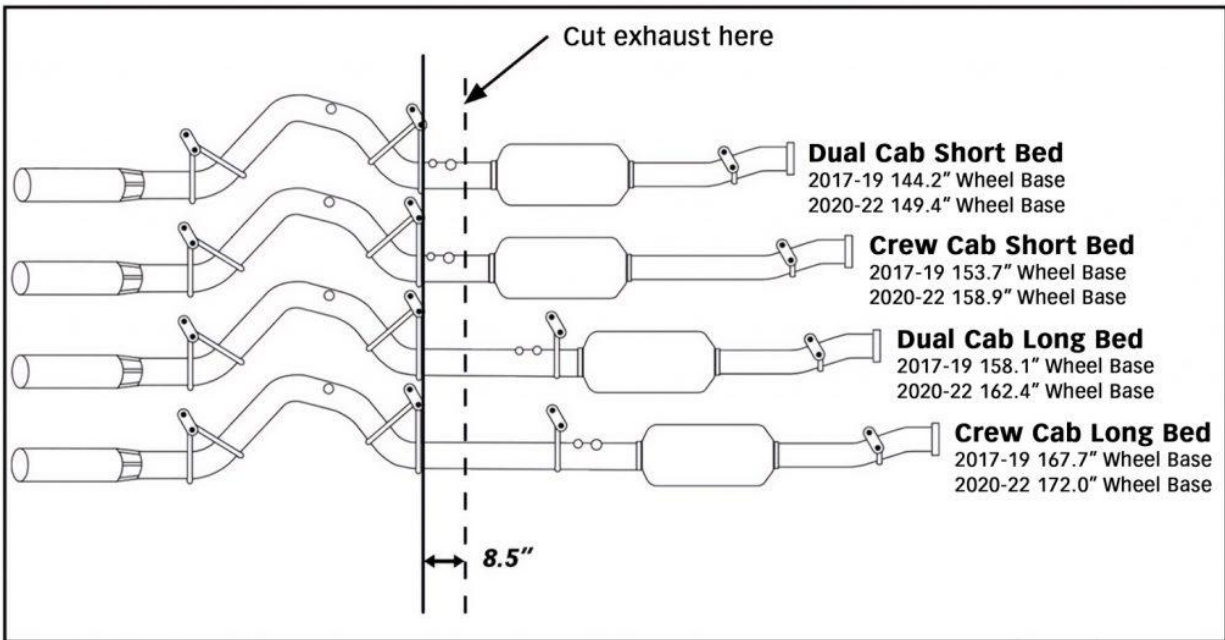
The stainless steel tube coming out of the sensors should not twist as you loosen the sensor. If it twists, **STOP NOW**. Do not bend, tweak or twist this tube or you'll find yourself at the dealership buying a replacement.



Short bed models:

Remove the two emissions sensors using a 17mm wrench. Move the sensors out of the way. They will be reinstalled into the Banks Monster Exhaust.

WARNING! The following step will require the use of a saw. Proper safety equipment should be used. Failure to use proper safety equipment may result in severe injury.

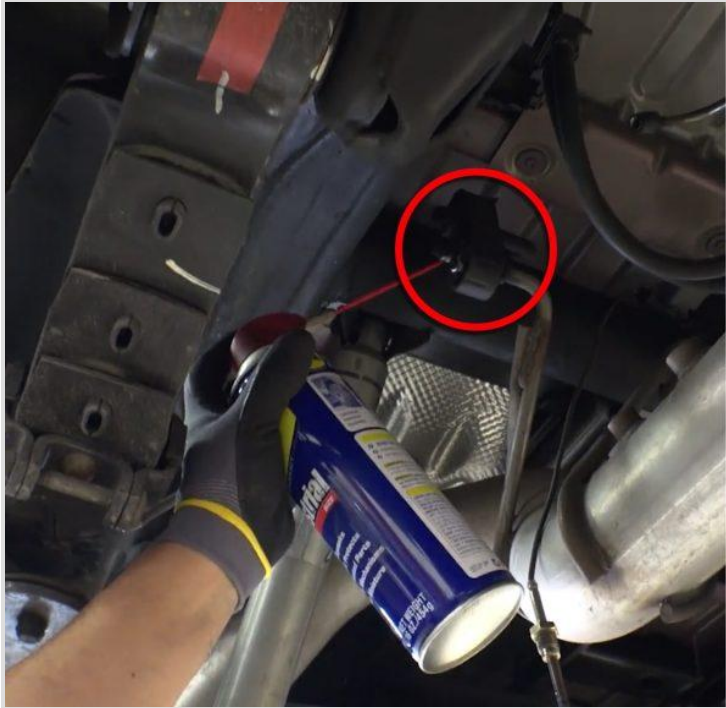


4. Measure from the front of the exhaust hanger, as shown, toward the DPF.

Take time when measuring and cutting the factory pipe to ensure the proper location and a straight cut. An improper cut will result in poor fitment.



Cut the factory exhaust pipe behind the Diesel Particulate Filter (DPF).



NOTE: Lubricating the rubber hangers with WD-40 or similar lubricant will ease the removal of the hanger pins.



5. Remove the factory tailpipe from the vehicle.

Disengage the exhaust system hanger pins from the rubber hangers using a large screwdriver, pry bar or hanger removal tool sold in any auto parts store.



6. Slide a 4" exhaust clamp onto the front of the Banks front tailpipe.



Install the front tailpipe onto the cut factory pipe.

Loosely snug the 4" clamp & sensors.

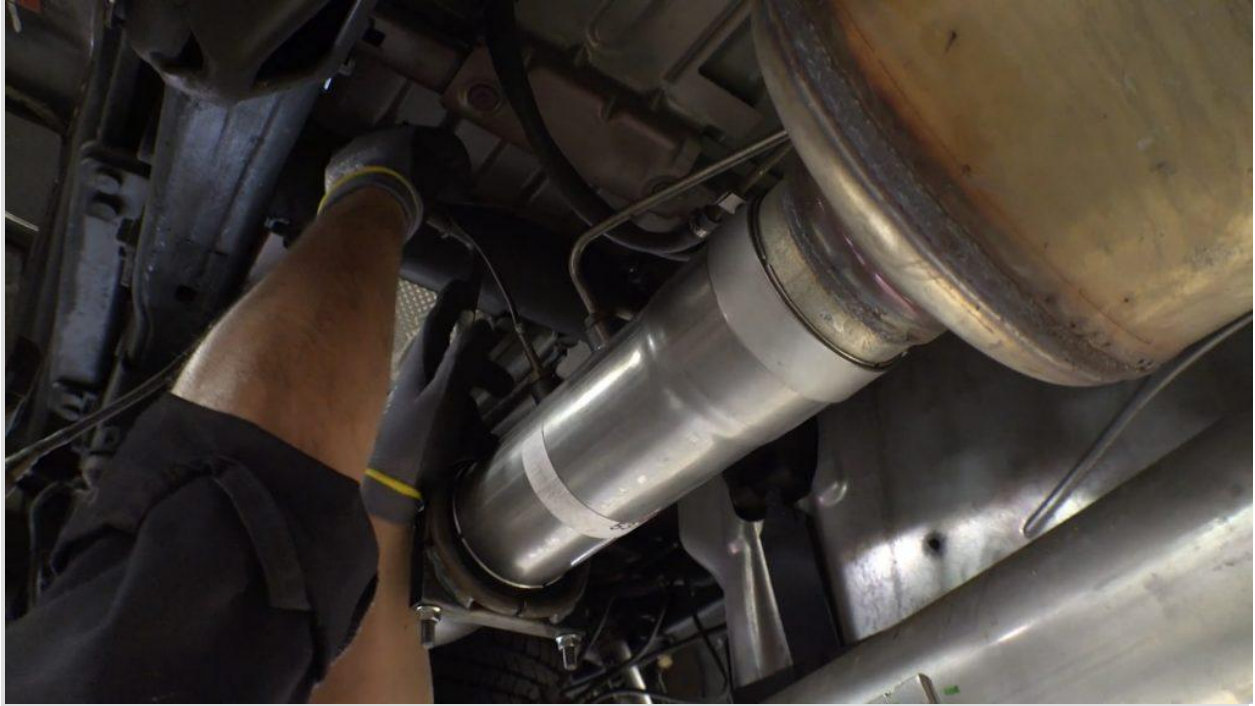


7. Install a 5" exhaust clamp onto the inlet of the Rear Tailpipe & Install the Rear Tailpipe onto the outlet of the Front Tailpipe.



Insert the Rear Tailpipe hanger pin into the factory rubber hanger.

Rotate the tailpipe until the hanger pin is parallel with the frame mounted pin. Loosely snug the 5" clamp.



8. Engage the factory rubber hangers onto the hanger clamp pins.

NOTE:

Maintain an adequate air gap clearance of one (1) inch between the exhaust and the shock absorber and between the exhaust and the spare tire.



9. Reinstall the NOx sensor.

Use a 24mm wrench.



Plugs only used with long bed trucks

10. Long bed models:

Use the supplied plugs to seal the factory ports on the Banks front tailpipe.

NOTE:

The supplied sealing washer must be installed onto the larger 16mm plug before installing to prevent the plug from bottoming out.



11. Short bed models:

Reinstall the two emissions sensors into the new front tailpipe using a 17mm wrench.

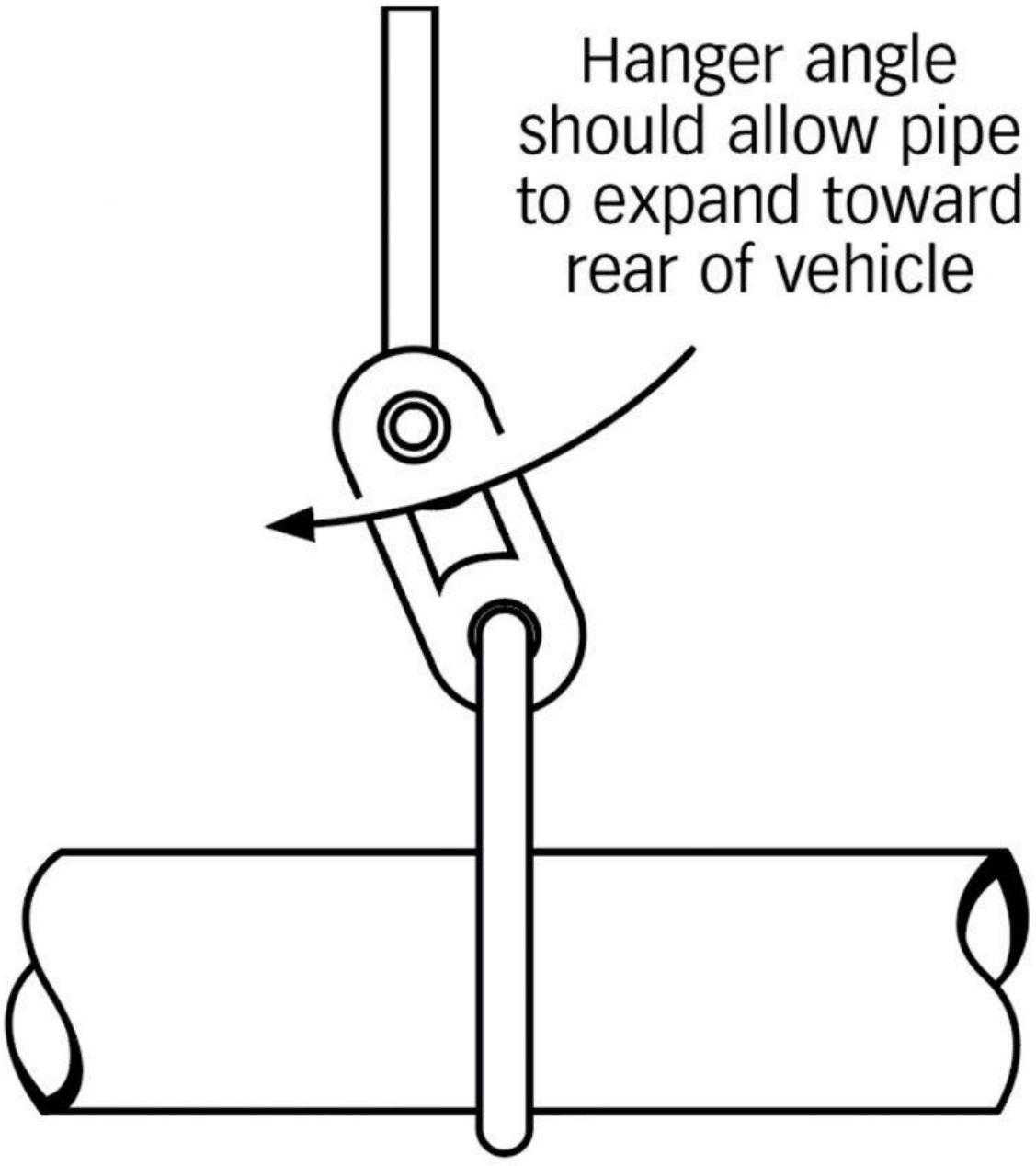


12. Install Banks SideKick exhaust tip with band clamp on the exhaust.

Keep the protective wrapping on until installation is complete.

NOTICE:

The minimum distance between exhaust tip and body is one (1) inch.



Hanger angle should allow pipe to expand toward rear of vehicle

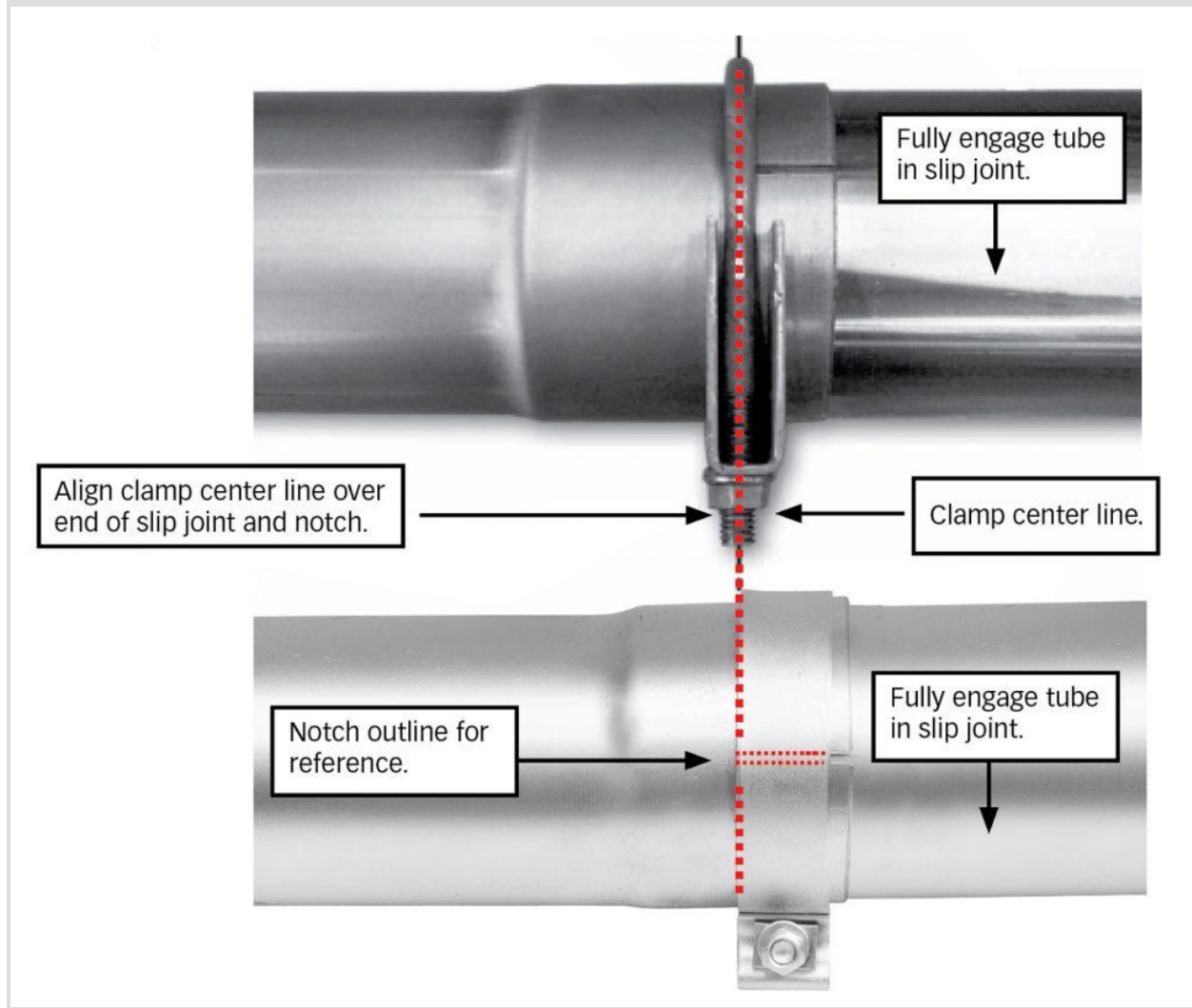
Foward 

13. Adjust each of the pipes to ensure that all of the hanger pins are parallel with the frame-mounted pins.

Check that the rubber hangers are all positioned slightly forward, leaning at a similar angle as your seatback.

This allows the hangers to be properly positioned once the exhaust system reaches operating temperature.

Fun fact: Your Monster Exhaust may grow more than 1" in length when it gets hot.



14. This image illustrates the proper location of an exhaust clamp on a tubing joint.



15. Tighten all clamps to 50 ft-lbs.

With everything positioned properly, begin to tighten the clamps starting with the ones closest to the turbo and working your way back.

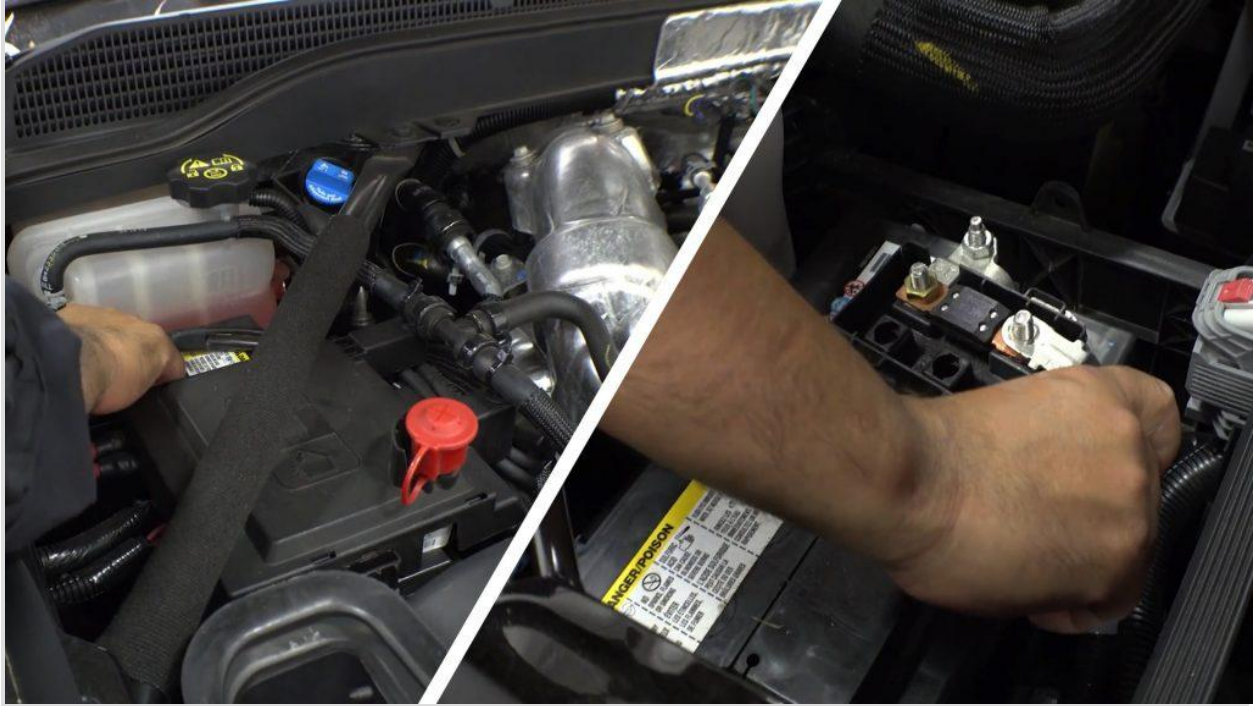


16. Remove the protective covering from the tailpipe tip.

CAUTION: The protective covering may ignite and burn if not removed prior to running the engine.



17. Your system includes two Banks Power decals designed to complement the Duramax emblems on the vehicle's front doors.



18. Re-connect the negative battery cable(s).

Start the engine and listen for exhaust leaks. Tighten the exhaust clamps as necessary. Whenever possible, tack weld slip connections to prevent disengagement is recommended. The Banks Monster Exhaust installation is now complete.