

FOR OFF-ROAD  
USE ONLY

# 20344

## 2020 FORD POWERSTROKE CAB AND CHASSIS 4" DOWNPIPE BACK OFF-ROAD PIPES WITH MUFFLER



- 1-32001()
- 1-32002()
- 1-32004()
- 1-CH64
- 2-LJ400

2 - 7/16 x 2 1/2 FT Bolts  
2 - 7/16 Flanged Nuts

**THIS PART IS FOR USE ON  
NON-REGISTERED RACE VEHICLES  
ON CLOSED-COURSE COMPETITION EVENTS**

INSTALLING OR USING THIS PART ON ANY EMISSION  
CONTROLLED VEHICLE (STREET OR OFF-ROAD) MAY  
VIOLATE FEDERAL AND/OR STATE EMISSIONS LAWS  
AND REGULATIONS

NOT AVAILABLE TO SHIP TO CALIFORNIA

**FLO~PRO**  
PERFORMANCE EXHAUST

**PICKED BY:** \_\_\_\_\_



**WARNING: BEFORE YOU BEGIN, VERIFY THAT YOU RECEIVED THE RIGHT KIT & EACH PART LISTED ON THE REVERSE PAGE**



**KIT # 20344**

**2020 Ford Powerstroke Cab and Chassis Trucks 4” Off-road Kit With Muffler**

**Warning:** This system is designed for **race use only** and **may void manufacturer’s warranty**.

Allow the truck’s exhaust system to cool before removal. Always practice safe work habits, i.e. jack stands, gloves, safety glasses etc.

**Notes:** \*\*\*ALWAYS MAKE SURE ALL COMPONENTS ARE IN FLO~PRO BOX ACCORDING TO PICK SHEET **BEFORE** STARTING REMOVAL OF STOCK EXHAUST SYSTEM\*\*\*

- FLO~PRO Performance Exhaust Systems are designed to fit stock trucks with OEM hitches, tires, wheels, and spare sizes. Any suspension lifts or other variations may require modification of the new exhaust system for proper fit and finish.
- WD40 or equal will make removal of hangers easier.
- A small tack with a mig welder is recommended under all clamp connections. **DO NOT** weld clamps
- **DO NOT** fully torque clamps until full system is installed and adjusted.
- **Installation of this kit is intended to be done on a lift or hoist with at least two people.**

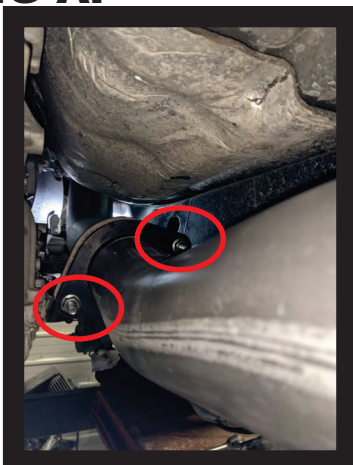
**Removal of OEM exhaust system**

1. Starting at the front, remove all sensors and wired connections from the exhaust (the sensor in the tailpipe can be left in place as a plug)
2. Remove the bolts on the 3 bolt flange at the back of the DPF. The factory extension (if present) will be reused. You will need to push the factory tailpipe assembly towards the back of the truck to create room for the new parts to go into place.
3. Remove the two bolts at the downpipe connection. Now you are ready to carefully remove the factory exhaust. **CAUTION:** These components are heavy and will require at least two people to remove safely.

**Installation of new FLO~PRO exhaust**

1. Install the front pipe #32001 with the supplied bolts to the downpipe. Snug this pipe enough to hold in place but so that it can still be adjusted with some effort. **FIG A.**
2. Install the mid pipe #32004 onto the end of the front pipe. Be sure to set the hanger into the factory rubber isolator and then install muffler #32003 onto the end of the mid pipe and secure to the tailpipe flange using the factory hardware but only finger tight. **FIG B.**
3. With the rear bolts in place, check for alignment of the system adjusting the rotation of the front pipe as needed to ensure straight, proper alignment.
4. When you are happy with the fitment, starting with the two bolt connection at the downpipe, secure all bolted and clamped connections moving from front to back. NOTE: clamps should be tightened to 45-50lbs and should be re-torqued after a few hot/cold cycles.
5. The included hanger clamp, CH64 can be used for added security on the back end of mid pipe #32004. Install the clamp so that the saddle is on the frame side of the pipe and insert the hanger end into one of the two factory rubber isolators just in front of the muffler. There should be some downward pressure on the rubber isolator to ensure the hanger is taking some of the weight.

**FIG A.**



**FIG B.**

