

HOW TO SPOT A WITCH

A HANDY GUIDE FOR ALL YOU WOULD-BE WITCH HUNTERS



THERE BE WITCHES; BE PREPARED.

THE FLOATING TEST

1. Tie up the accused witch.
2. Throw her into a body of water.
3. If she floats, she is a witch. Haul her out of the water and hang her.
4. If she sinks and drowns, she was innocent.



THE DUNKING TEST

1. Tie up the accused witch to a dunking chair (a seat attached to a rope and a lever).
2. Submerge her.
3. Pull her out and ask her if she is a witch.
4. If she admits it, hang her.
5. If she denies it, repeat.



MAKE A WITCH CAKE

1. Mix flour with some urine from the people that the witch has afflicted.
2. Bake it into cake.
3. Feed it to a dog.
4. The witch should cry out when the dog bites the cake.



LOOK FOR THE DEVIL'S MARK

1. Examine the witch for bodily signs of the Devil: birthmarks, moles, scars, or extra nipples.
2. If you find any, you have a witch on your hands.
3. If you prick this mark and it doesn't bleed, she is definitely a witch.



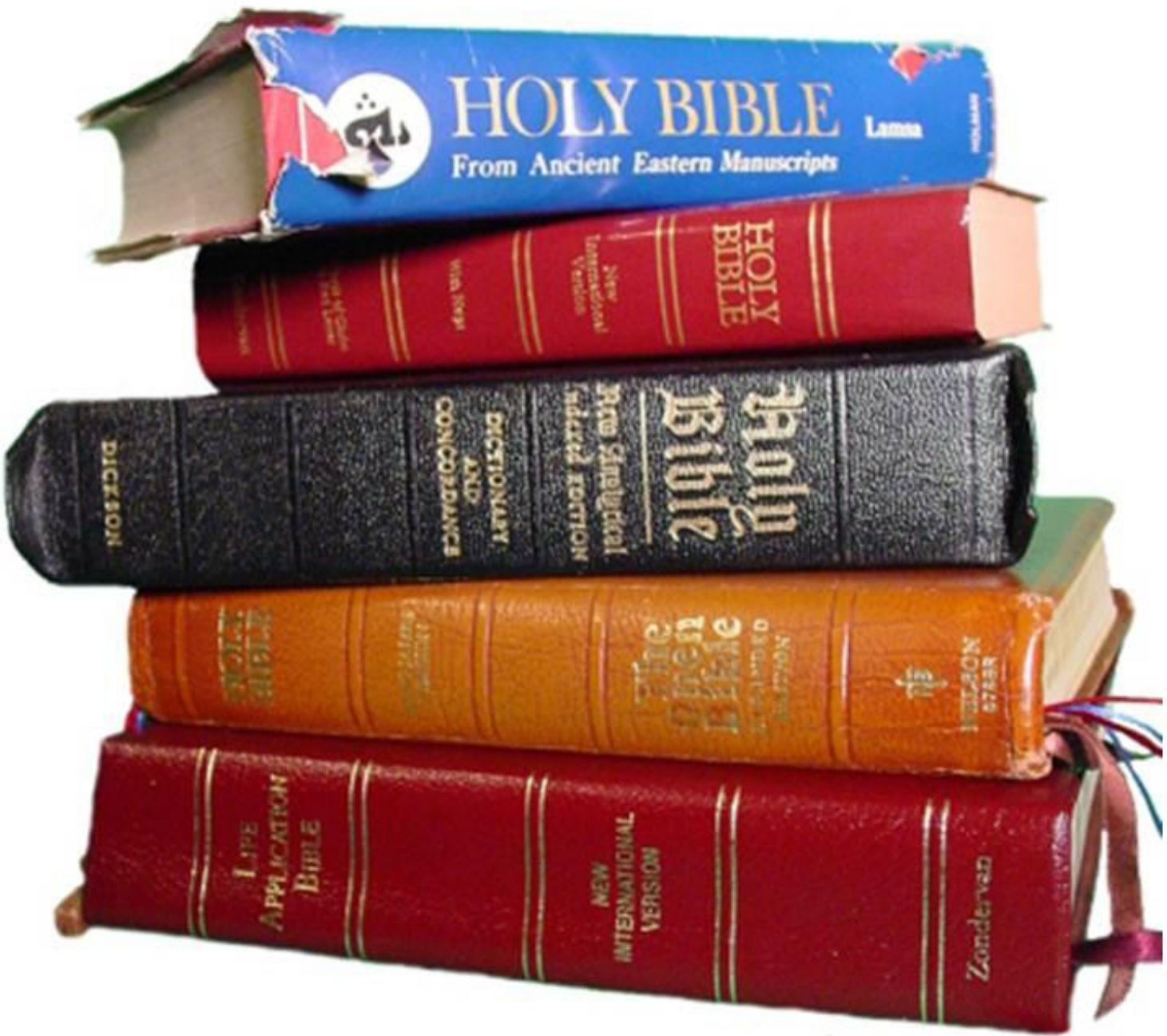
LOOK FOR FAMILIARS

1. Witches often travel with familiars, animals that are actually demons in disguise.
2. Look for any odd animals around the witch's residence (black cats, frogs, stray dogs, flies, etc.)
3. If the witch speaks to any kind of animal, this is also a sign of a witchcraft.



STACK OF BIBLES TEST

1. Weigh the witch against a stack of Bibles.
2. If she is heavier than the stack, she is a witch.
3. If she is lighter than the stack, she is a witch.
4. If she balances perfectly, she is in the clear.



SPECTRAL EVIDENCE

1. The spirits of witches often appear to their victims before they torment them.
2. Ask the afflicted people the identity of the witch who is spiritually attacking them.
3. No other proof is needed.



PRESSED TO CONFESS

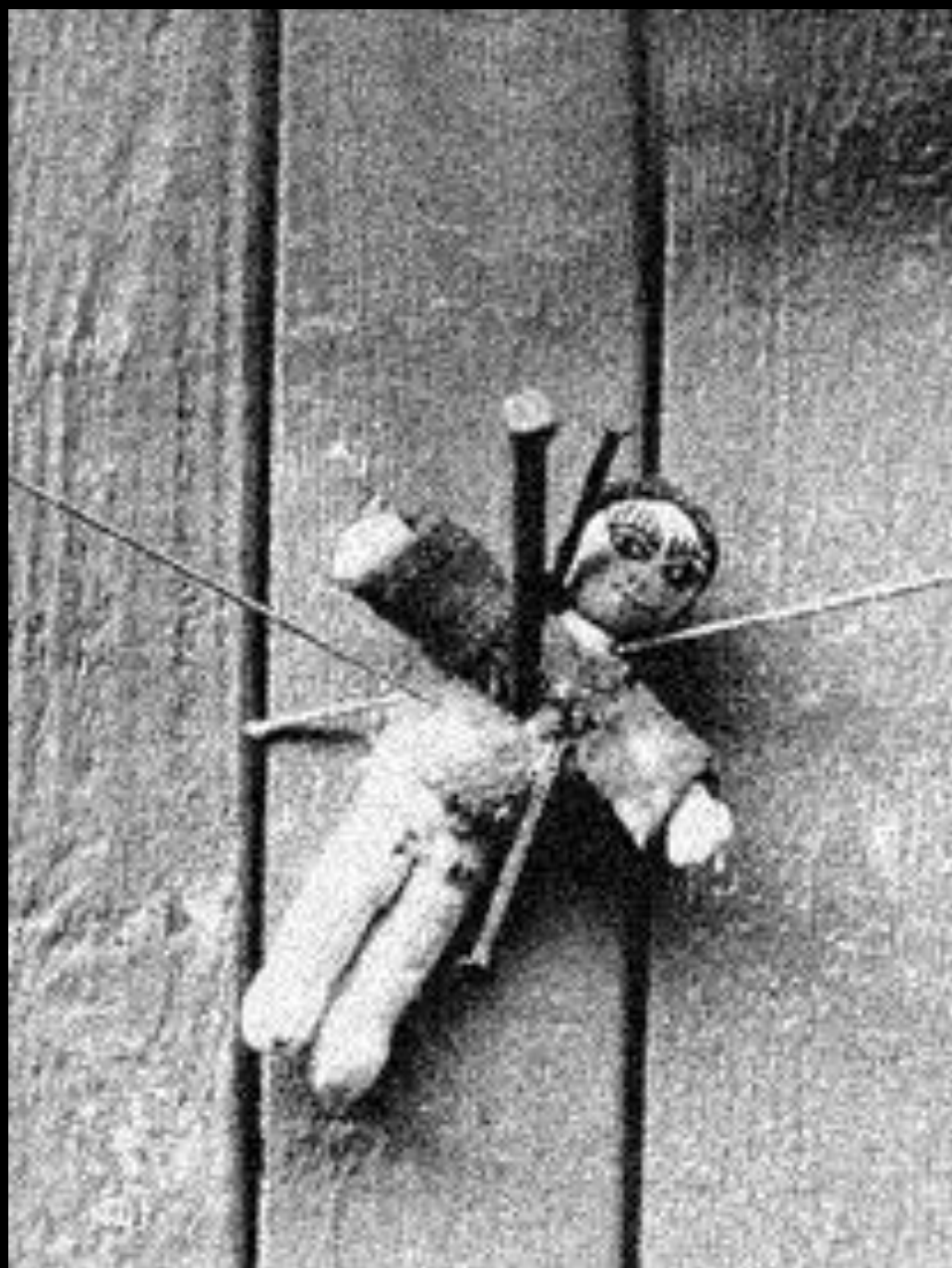
1. Have the witch lie on the ground.
2. Place a board on top of her.
3. Stack a large rock on the top of the board.
4. Repeat until the witch confesses... or dies.



Pressing Giles Corey to Death.

ARTICLES OF WITCHCRAFT

1. Search the witch's house for items commonly associated with witches. (These items might include small dolls with pins in them, herbs or roots, cook pots, etc.)



THE LORD'S PRAYER

1. Ask the witch to recite the Lord's Prayer.
(Witches cannot speak the Lord's Prayer correctly because it is so holy.)
2. If she messes up any part of the prayer, she is a witch.

impiorum: et in una
non stetit. et in cathedra
silencie non sedit.
in lege domini uoluit
et in lege eius meditabitur
die ac nocte.
Et erit
in quibus lignum quod placent



ser
uit d. ix.
Eatus
ur q
non a
but in
cofilio

