

• **CS60: 60W Frameless Ceiling Speaker**

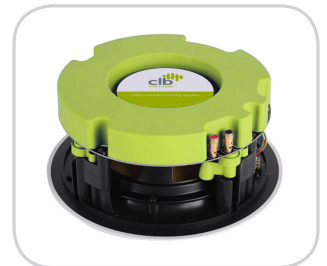
The **CS60** is a discrete **60W low impedance Frameless Ceiling Speaker** designed to offer greater flexibility in terms of application while accommodating a wide range of music tastes. The frameless design makes it one of the most **discrete ceiling speakers** able to match most decor.

With a **woven Kevlar cone** and **butyl rubber surround** this speaker is suited to a wide variety of applications where high quality background or foreground music is required, such as, restaurants, bars, retail, residential or even schools and colleges.

Constructed in metal and utilising a 'dog-leg' installation this product is extremely **fast fitting** and **accessible from the front with accessible environmental EQ controls**.

Features:

- Frameless, simple, unobtrusive design
- 60W, Low Z (8 Ω)
- Fast-fix solution (dog-leg design)
- Simple, unobtrusive design
- 6 inch 2-way coaxial speaker system
- Premium grade driver
- Magnetic front grille
- Metal construction
- Plastic rear housing / enclosure
- Front accessible environment EQ



Specifications:

| Model: CS60 | |
|---------------------------|-------------------|
| Nominal Impedance | 8Ω |
| Power (RMS) | 60W |
| Driver | 6.5" |
| Driver Material | Kevlar Woven Cone |
| Single Tweeter | 0.75" |
| Tweeter Material | Titanium Dome |
| Frequency Response (±3db) | 60 Hz-20 kHz |
| Efficiency | 90dB |
| Colour | White (RAL 9010) |
| Dimensions | Ø 227mm x 87mm |
| Cutout Size | Ø 210mm |
| Weight (Net) | 1.52kg |
| Weight (Gross) | 2.00kg |