

Recommendation Guidelines



audiovolt.co.uk

AudioVOLT
HOME AUDIO & LIGHTING SPECIALIST

Purchase your Zuma Lumisonic and Luminaire from us and receive free industry leading customer support

audiovolt.co.uk Telephone: 02476 36 98 90

When selecting your ZUMA products it is important to think about the room you are setting up, such as the rooms dimensions and structural light sources.

For standard homes we recommend the following guidelines:

Kitchens and bathrooms

One unit per 1.2m²

Living rooms and bedrooms

One unit per 1.8m²

Standard lighting recommendations state the distance between the wall and downlights should be half the distance as length between the lights.

Luminaire or Lumisonic?

Generally, the more Lumisonics there are, the better. However, some helpful guidance in line with the unit recommendation above is a 60/40 split. Keeping our guidelines in mind, you should also consider the circumstances, intended use and the functionality of the space*.

*For example, placing Lumisonics above places they are going to be utilised the most and seating areas.

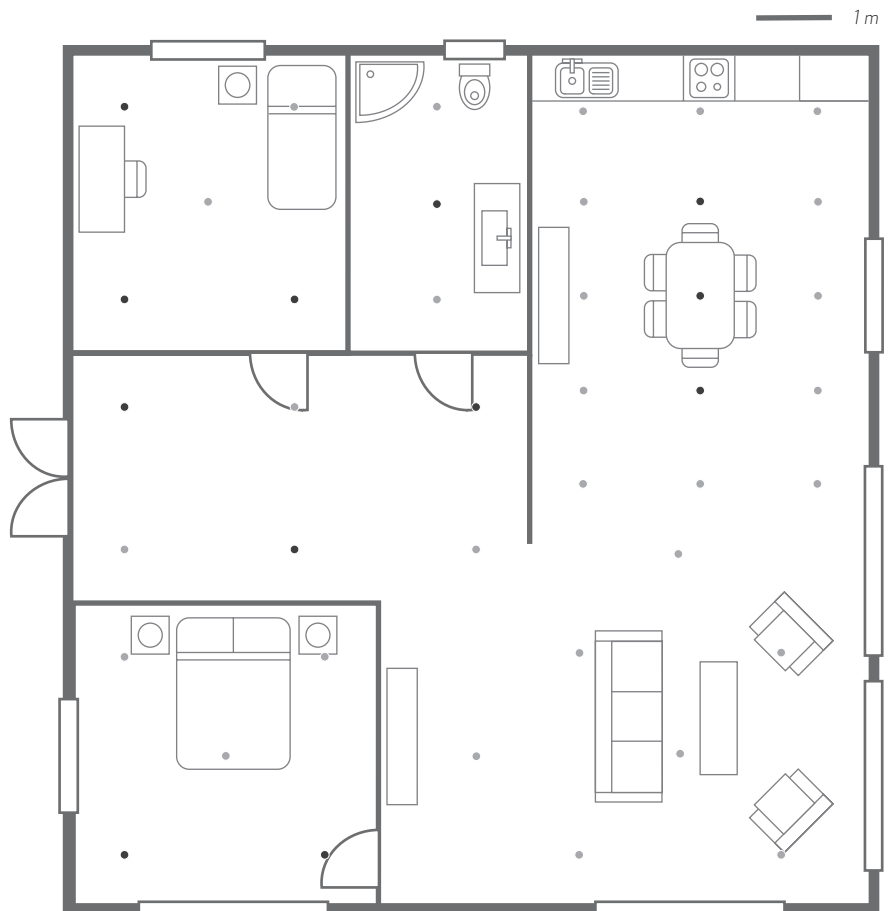


Illustration purposes only.

- Zuma Luminaire
- Zuma Lumisonic

In this example we have placed a higher ratio of Lumisonics in high activity areas, such as the living room, dining area and kitchen. The ratio decreases parallel to the rooms utilisation and function as seen in the bathroom and master bedroom which have a greater split compared to the second bedroom with a lesser split.

ZUMA
Sound & Light. Reinvented.