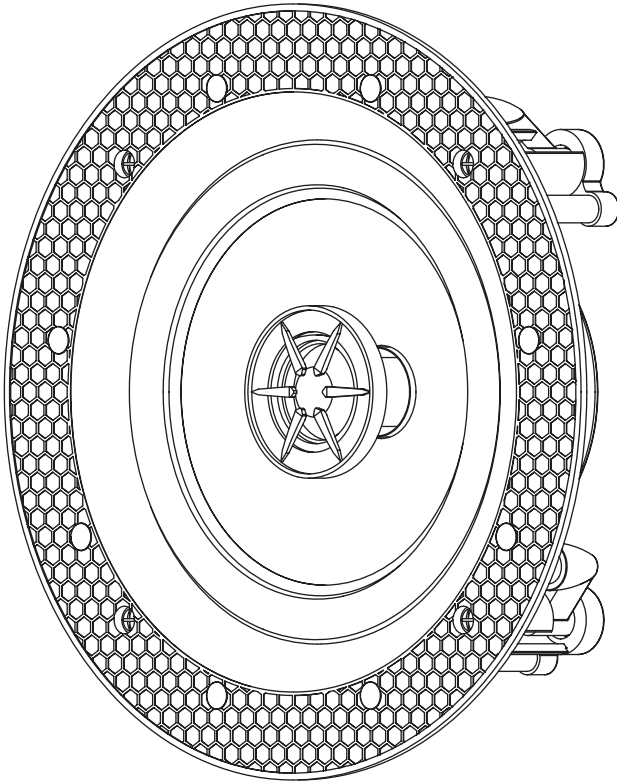


PCS-40

IN-CEILING 40 W SPEAKER

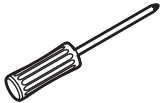
Operation Manual



BEFORE INSTALLING THE PCS-40

EQUIPMENT YOU WILL NEED

Besides the template that is included, you must have a ladder and the equipment shown below to make the installation go smoothly.



Square-head or Phillips-head screwdriver



Tape measure



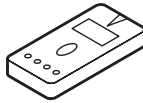
Sharp pencil



Speaker cable



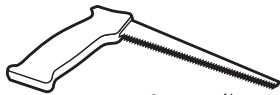
Wire cutter/stripper



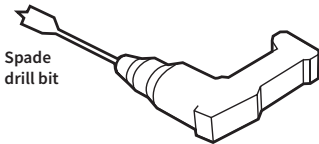
Stud finder



Protective eyewear



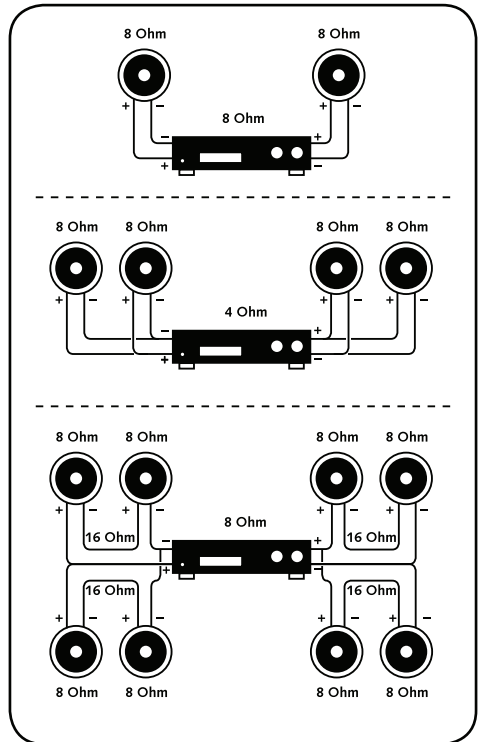
Cutter tool*



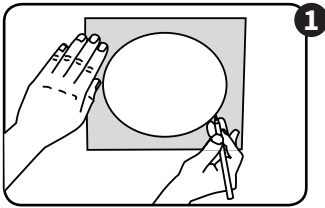
Spade drill bit

Power drill

WIRING POSSIBILITIES

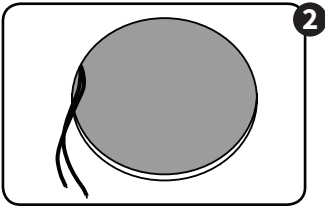


IN-CEILING INSTALLATION

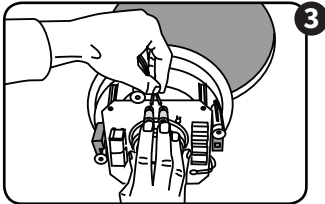


1 Use the enclosed template to mark the cutout, then simply cut along the line. This is the only cut you'll need to make!

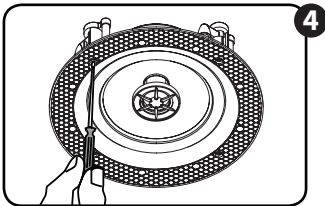
Cut-out dimension: 210(Ø) mm.



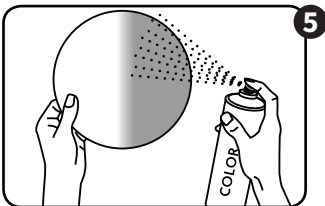
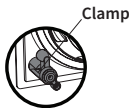
2 When laying the loudspeaker cable from the amplifier to the installation point, make sure that the cable end extends to 30cm (12") from the ceiling cutout.



3 Connect the speaker cable to the screw clamps. Ensure that the polarity is correct.



4 Tighten clamp screws until you can feel the frame press firmly against the wall. This indicates that the clamp is extended and is gripping the wall.



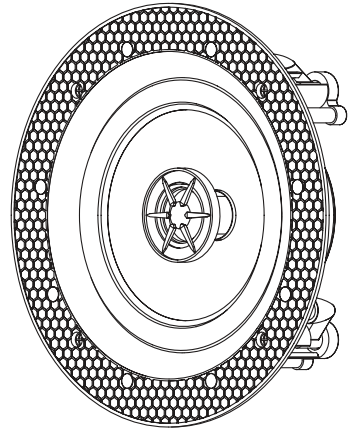
5 The loudspeaker grille can be coated with regular paint prior to installation. If the grill comes with an additional coating this must be removed before painting.

PCS-40 IN-CEILING 40 W SPEAKER

The PCS-40 is a discrete 40 Watt low impedance In-Ceiling Speaker designed to offer greater flexibility in terms of application while accommodating a wide range of music tastes. The frameless design makes it one of the most discrete ceiling speakers able to match most decor.

With a Polypropylene cone and butyl rubber surround the PCS-40 In-Ceiling Speaker is suited to a wide variety of applications where high quality background or foreground music is required, such as, restaurants, bars, retail, residential or even schools and colleges.

Constructed in metal and utilising a 'dog-leg' installation this product is extremely fast fitting and accessible from the front and with a stylish magnetic front grille.



FEATURES:

- Frameless, simple, unobtrusive design
- 40 W, Low Z (8 Ω)
- Fast-fix solution (dog-leg design)
- Simple, unobtrusive design
- 6 inch 2-way coaxial speaker system
- Magnetic front grille
- Metal construction

SPECIFICATIONS

Nominal Impedance	8 Ω
Power (RMS)	40 W
Driver	6.5 inch
Driver Material	Polypropylene Cone
Single Tweeter	0.5 inch
Frequency Response (± 3 db)	70 Hz - 20 kHz
Efficiency	87 dB
Colour	White (RAL 9010)
Dimension	227(\emptyset) x 60(D) mm
Cut-out Size	210(\emptyset) mm
Weight (Net)	0.74 kg
Weight (Gross)	1.05 kg