



Process Inc.

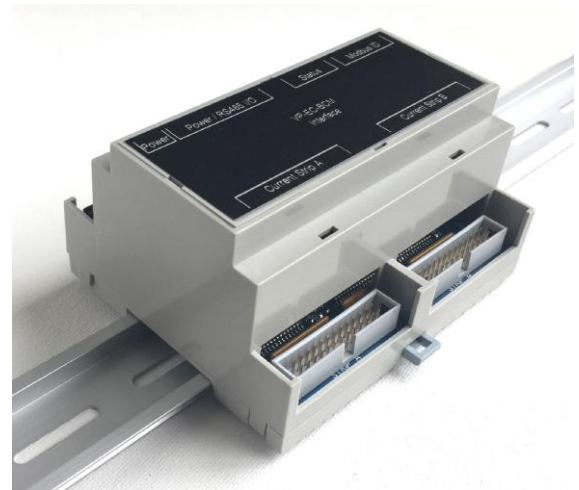
Model: VP-EC-BCM-42CT

www.vpprocess.com

VP-EC-BCM-42CT Branch Current Monitor 42 Point CT Strip Interface

Standard Features

- Low Power (9 - 24 VDC)
Nominal 12 VDC
Supplied from Gateway via CAT5e Cable
- Up to 42 Current Transformers
21 CT's Max per strip on 1" Centers
Current Strip A and Current Strip B
- Jumper Selectable Ribbon Cable Entry
Default TOP, Optional BOTTOM
- CT Maximum Continuous
Primary Current = 60 A Max
- CT Insulation Voltage 3500 VAC/1Min
- True RMS Current Measurement
- RS-485 Output, Half Duplex
Fault Tolerant Isolated Driver IC
2 x RJ45 Jack (Power and Data)
- MODBUS RTU Protocol
ID Dipswitch Selectable
Baud Rate Programmable
(9600 up to 115.2K Baud)
- Flash Microprocessor for Program
Variable Storage and Digital Calibration
- High Precision 12 Bit A/D Converters
- 1500 VAC Isolation Between Signal
Conditioning and Communication Circuits
- DIN Rail Enclosure
- LED Indicators
Blue Power,
RS485 Tx(Red) and Rx (Green),
Fault (Red)



VP-EC-BCM-42CT SPECIFICATIONS

| | |
|--------------------------------|---|
| Power Source: | 12 VDC Nominal (9 –28 VDC), 25 mA Average Power input either on the 5.5 mm jack or via the RJ45 Jacks Blue Power ON LED |
| Network Port: | 2 wire RS-485, Half Duplex, Data A, Data B 9600 / 19.2K / 56K / 115.2K Baud, N81 Baud Rate is jumper selectable RS485 LED's: Tx (Red), Rx (Green) Terminal Block and RJ45 Jack Isolated RS485 Driver IC with fault protection on Data A and Data B lines |
| Communication Protocol: | MODBUS RTU, ID Programmable via Dipswitch Supported Functions: 03, 04, 06, 16 |
| Current Transformers: | Talema AC1020 Current Transformers Nominal 20 Amp. 60 Amp Max int Insulation Voltage 3500 VAC/1Min Operating and Storage Temperature -45 °C thru +85 °C |
| Fault Indicator : | RED LED Flashes if any of the Current Transformers are not connected |
| A/D Converter : | 12 Bit Resolution, 60 Samples per second per phase Complete update for 42 CT's = 4 Seconds |
| Repeatability: | +/-1 % Full Scale |
| Linearity: | +/-1 % Full Scale |
| Resolution: | 0.5% Full Scale |
| Accuracy: | +/- 1% 2 to 60 AMP +/- 2% 0 to 2 AMP |
| Circuit Isolation: | 1500 VAC Continuous between input circuits and power/RS485 circuits |
| Operating Temperature: | -20 Deg C to +60 °C Operating Temperature -45 Deg C to +85 °C Storage Temperature |
| Enclosure Dimensions: | DIN Rail Enclosure ABS/PC Blend 4.183" L x 3.551" W (106.25mm x 90.20mm) x 2.264" H (57.51mm) Material Flammability Rating: UL94 V-O |
| User Interface: | Dipswitch for ID Jumper Bank for Baud Rate Selection LED Indicators for Power, Fault and RS485 Rx and Tx |



VP Process Inc.

1406 Parkinson Rd.
West Kelowna, BC, Canada, V1Z 3M6
1-250-769-8220
info@vpprocess.com www.vpprocess.com
© VP Process Inc. 2017