

## NAALA 02 Sconce

Naala is a totemic symbol of power and beauty that conveys a sense of primal mystery invoking visions of ancient rituals and sacred ceremonies. Its form is made up of rudimentary shapes with a sharpness interpreted for the new age. The spear like motif repeats and intersects with itself like the colorful patterns found on traditional African textiles. Curved lines taper into sharp points and lines at the forefront making this a stunning piece, yet its scale keeps it reserved from demanding excessive attention. This sconce will supplement a variety of interior styles and is available in brushed bronze or satin nickel.

### DETAILS

MATERIALS: Engineered Polymer, Steel

APPLICATION: Wall Mount

TYPE: Hardwired

SOCKET: Type G8, Max 7W

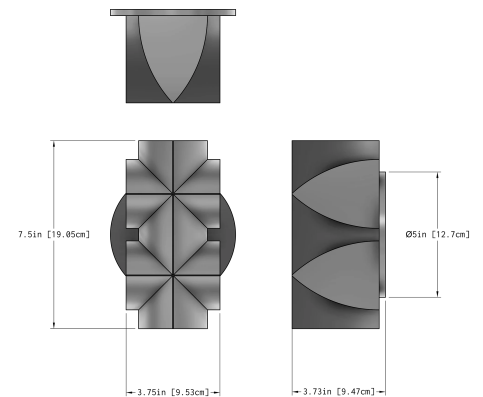
LIGHT SOURCE: x2 G8 4.5W, 90+ CRI, 800 lm

CERTIFICATIONS: UL and cUL Listed

### DIMENSIONS

DIMENSIONS: L 3.73" x W 5" x H 7.5"

WEIGHT: 2.27 lbs



Material:

- Brushed Bronze
- Satin Nickel

Voltage:

- 120V (North America)
- 220V-240V (International)