

Fiber Optic Cable for EDGE X

Model PXX User Guide and specs



Born in Hawaii - Built for the World

This accessory allows for flash photography when combined with Intova's EDGE X camera and PX21 waterproof slave strobe.

Typical assemblage of Intova products used to connect an EDGE X to PX-21 slave strobe.

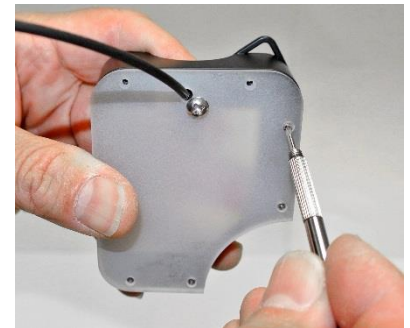
1. EDGE X camera
2. SP1-BT single handle tray
3. SP1-FA mini flex arm
4. PXX fiber optic cable
5. PX-21 slave strobe and diffuser holder (above)



1. Remove front plate from diffuser holder



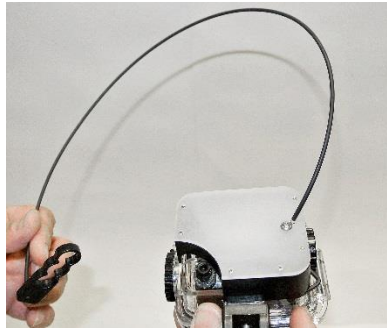
2. Front plate removed



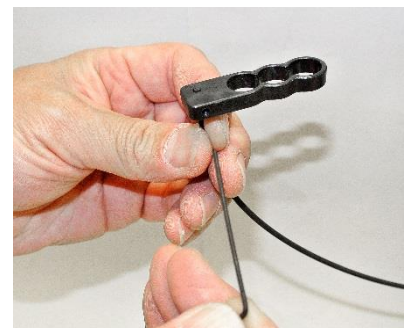
3. Attach PXX diffuser plate to PX-21 diffuser holder



4. Attach diffuser holder to PX-21



5. PXX attached to PX-21



6. Use hex wrench to slightly loosen hex nut on PXX adapter



7. Attach PXX adapter to EDGE X camera



8. Allow cable to "relax" any twist and very carefully tighten hex nut.



9. In camera menu, set PHOTO FLASH to MODE1

Warning: glass fiber can crack if over tightened.

SPECIFICATIONS:

Description	Glass fiber optic cable encased in black plastic. One end has an anodized aluminum adapter that securely fits to top of EDGE X camera while other end has diffuser plate adapter that is attached to and replaces the PX-21's diffuser holder clear front plate.
Weight	Weight: 19.85g / 0.7 ounces
Dimensions	Length: 49.5cm / 19.5 inches
Accessories included	hex key wrench and screw driver
Model	PXX
UPC	814002011984

NOTE: As a result of continual improvements, the design and specifications of the product as described in this specifications sheet may change without notice.

© 2015 Intova, LLC • All Rights Reserved
1100 Alakea St., 18th Floor Honolulu, Hawaii 96813 USA
(808) 837-0074