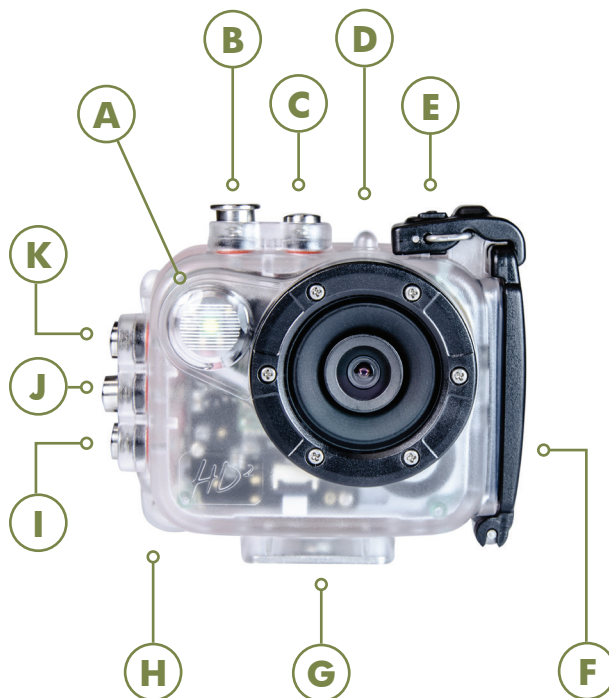


# INTOVA

## HD<sup>2</sup>

### QUICK START GUIDE



## BUTTONS AND INTERFACE

### A. Video Light/Flash

#### B. Shutter Button

- » Video mode: start/stop recording.
- » Photo mode: shutter button.
- » Power flash on/off (press & hold).
- » Thumbnail view mode: select.
- » Playback mode: Return to thumbnail view.

#### C. Power Button

- » Power the camera on/off (press & hold).
- » Video/Photo/View mode: Select.
- » Playback mode: exit menu and return to video screen.

#### D. Indicator Light

- » Red LED is ON while charging and OFF when charge is complete. FLASHES when

video recording is in progress.

#### E. Door Lock

#### F. Removable Housing Door

#### G. Tripod Mount

#### H. Float Strap Attachment

#### K/I. Up/Down Buttons

- » Scroll up/down to select thumbnail to view.
- » Video/photo mode: Adjust digital zoom.
- » Playback mode: speed up video playback (down button) and slow down video playback (up button).
- » Down button: one touch LCD off.

#### J. Menu/OK Button

- » Access Menu.
- » Select.
- » Playback mode: start and pause video.

## FCC STATEMENT:

This device complies with part 15 of the FCC Rules. Operation is subject to the following two conditions:

- (1) This device may not cause harmful interference, and
- (2) this device must accept any interference received, including interference that may cause undesired operation.

This equipment has been tested and found to comply with the limits for a Class B digital device, pursuant to Part 15 of the FCC Rules. These limits are designed to provide reasonable protection against harmful interference in a residential installation. This equipment generates, uses and can radiate radio frequency energy and, if not installed and used in accordance with the instructions, may cause harmful interference to radio communications. However, there is no guarantee that interference will not occur in a particular installation. If this equipment does cause harmful interference to radio or television reception, which can be determined by turning the equipment off and on, the user is encouraged to try to correct the interference by one or more of the following measures:

- » Reorient or relocate the receiving antenna.
  - » Increase the separation between the equipment and receiver.
  - » Connect the equipment into an outlet on a circuit different from that to which the receiver is connected.
  - » Consult the dealer or an experienced radio/TV technician for help.
- Changes or modifications not expressly approved by the party responsible for compliance could void the user's authority to operate the equipment.



## REMOTE

### L. Video Record

- » Start/stop recording.

### M. Power OFF

- » Power the camera off.

### N. Photo Button

- » Take photo.

For complete instructions go to [www.intova.com](http://www.intova.com).

## Precautions

- » Before using the camera, read the precautions to ensure correct use, the best performance and longer lifespan.
- » Do not leave or store the camera in direct sunlight, especially the lens, as prolonged exposure to direct sunlight can damage the image sensor.
- » Store in a cool, dry environment.
- » During storage, note that battery must be recharged periodically to maintain operating ability. Allowing total discharge may ruin the battery.
- » Clean with a soft dry cloth and take special care around lens.
- » Format Memory Card prior to first use.
- » Do not use a memory card that contains files from a different device as this may cause camera to malfunction.

**LIMITED WARRANTY:** This product has a limited 1 year warranty, to the original purchaser, to be free from defects in materials and workmanship. Follow all product instructions and warnings as warranty does not cover damage due to misuse, improper care, accidents, or alterations. See [www.intova.com](http://www.intova.com) for further details, limitations, and restrictions.

Need help using your camera?

**WE'RE HERE FOR YOU.**



Visit our website:

[www.intova.com](http://www.intova.com)



Email customer support:

[info@intova.net](mailto:info@intova.net)

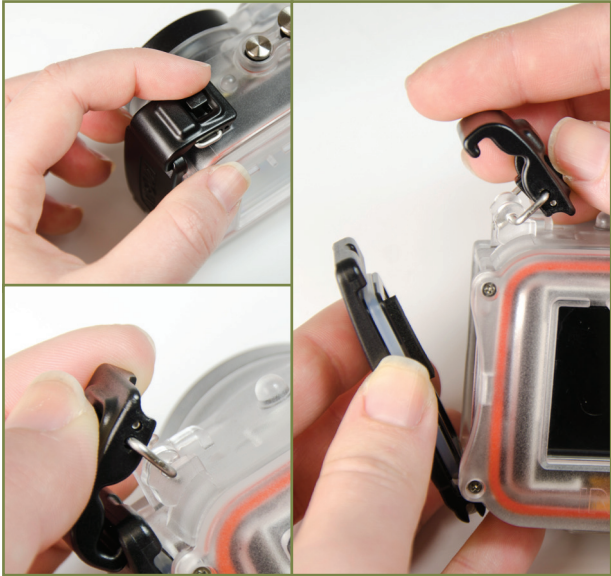


Call customer support:

**+1(808) 837-0074**

# HD<sup>2</sup> QUICK START GUIDE

For complete instructions go to [www.intova.com](http://www.intova.com).



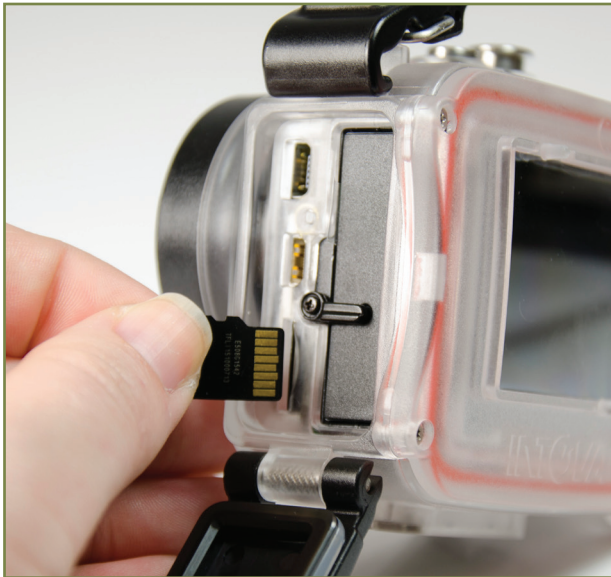
**1. OPEN HOUSING DOOR**



**2. INSERT BATTERY**



**3. CHARGE**



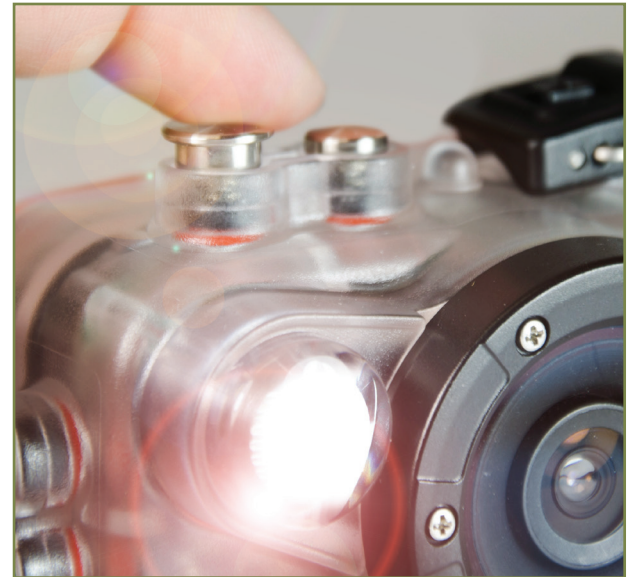
**4. INSERT MICRO SD CARD**  
(Up to 32GB class 10 microSD card)



**5. POWER ON** (press & hold)



**6. PRESS SHUTTER TO SHOOT/RECORD**



**PRESS SHUTTER** (press & hold) **FOR LIGHT**