



# textile library collection

Aviva's eyes are always looking for amazing fabrics to bring into her line. Once in a while she finds something that she just can't live without. In this collection, we see all her favorites; a peak into her private fabric library. Her personal selections are all about textures, sheen, and engaging surfaces. All colors are deliberately chosen to work back into all her Signature looks. We hope you'll agree that they are indeed irresistible.



Crushed Velvet in Royal



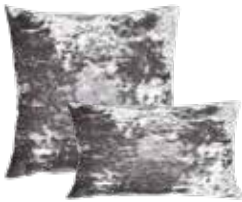
Crushed Velvet in Ivoire



Crushed Velvet in Glaze



Crushed Velvet in Taupe



Crushed Velvet in Charcoal



Crushed Velvet in Rose



Sage Aura Wave



Sage Aura Slub



Estate in Champagne\*



Estate in Silver\*



Moonphase



Estate in Blue\*



Timber in Drift



Timber Cobble

standard sizes available: 12"x20" • 20"x20" • 24"x24"

*\*All Estate items can be customized with Swarovski burst details!*

2387 la mirada drive, vista, california 92081 | 718.422.1262 | 718.422.0562 fx | sales@avivastanoff.com | www.avivastanoff.com