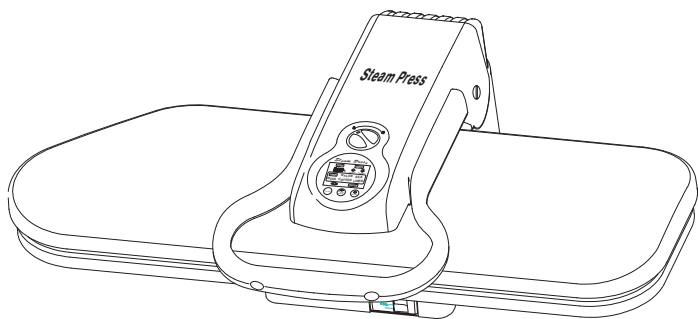


INSTRUCTIONS MANUAL

STEAM PRESS



MODEL ESP-77T

Please read all instructions before use.

PLEASE READ THIS MANUAL CAREFULLY BEFORE USING AND KEEP IT FOR FUTURE REFERENCE.

IMPORTANT SAFETY INSTRUCTIONS

When using electrical appliances, especially when children are present, basic safety precautions should always be taken, including the following:

READ ALL INSTRUCTIONS BEFORE USING KEEP AWAY FROM WATER

DANGER-Any appliance is electrically live even when the switch is off.

To reduce the risk of death by electric shock:

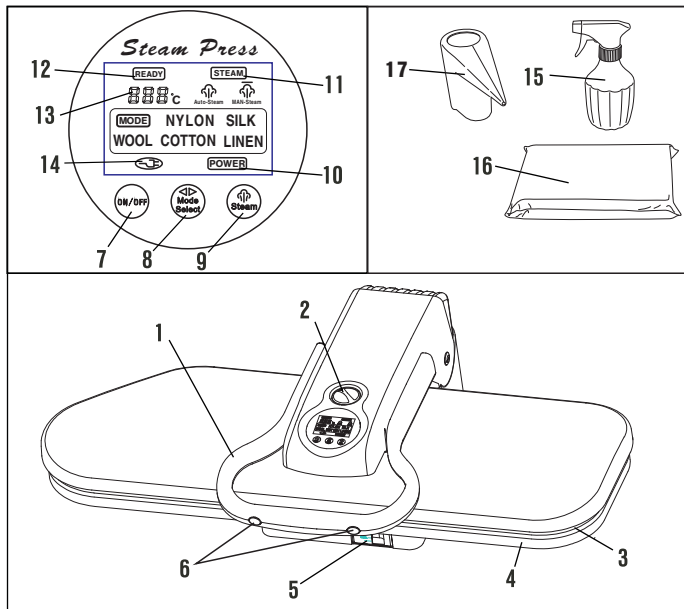
1. Always unplug it immediately after using.
2. Do not place or store appliance where it can fall or be pulled into a tub or sink.
3. Do not place in, or drop into water or other liquid.
4. If an appliance falls into water, unplug it immediately. Do not reach into the water.

WARNING-To reduce the risk of burns, electrocution, fire, or injury to persons:



1. This appliance should never be left unattended when plugged in.
2. Close supervision is necessary when this appliance is used by or near children or the physically challenged. Unsupervised use could result in fire or personal injury.
3. Use this appliance only for its intended use as described in this manual. Do not use attachments not recommended by the manufacturer.
4. This appliance can be used by children aged from 8 years and above and persons with reduced physical, sensory or mental capabilities or lack of experience and knowledge if they have been given supervision or instruction concerning use of the appliance in a safe way and understand the hazards involved. Children shall not play with the appliance. Cleaning and user maintenance shall not be made by children without supervision.
5. If the supply cord is damaged, it must be replaced by the manufacturer, its service agent or similarly qualified persons in order to avoid a hazard.
6. Never operate this appliance if it has a damaged cord or plug, if it is not working properly, or if it has been dropped or damaged, or dropped into water. Do not attempt to repair the appliance. Incorrect reassembly or repair could cause a risk of fire, electric shock, or injury to persons when the appliance is used. Return the appliance to an authorized service centre for examination and repair .
7. Keep the cord away from heated surfaces. Do not allow cord to contact heated surfaces. Do not pull or twist cord. Let appliance cool completely before putting away.
8. This appliance has a polarized plug(one blade is wider than the other). As a safety feature, this plug will fit in a polarized outlet only one way. If the plug does not fit fully in the outlet, reverse the plug. If it still does not fit, contact a qualified electrician. Do not attempt to defeat this safety feature.
9. Never drop or insert any object into any opening.
10. Do not use outdoors or operate where aerosol(spray)products are being used or where oxygen is being administered.
11. Do not use an extension cord to operate appliance.
12. Surfaces of this appliance may be hot when in use. Do not let eyes or bare skin touch heated surfaces.
13. Always turn the switch to the off position before plugging in or unplugging the unit.
14. Always let the appliance cool for at least thirty minutes before storing.
15. Do not move the appliance without unplugging it.
16. Unplug this appliance before filling. Do not overfill.
17. While emitting steam, this appliance may cause burns if it is held too close to the skin, scalp or eyes, or if it is used incorrectly. To reduce the risk of contact with hot water as it escapes through steam vents, test appliance before each use by holding and testing it away from body.
18. Do not operate steamer without properly filling the water container.
19. Never yank cord to disconnect from outlet. Instead, grasp plug and pull to disconnect.
20. Burns could occur from touching hot metal parts, or proximity to hot water or steam. Do not turn unit upside down- there may be hot water in reservoir.
21. To reduce likelihood of circuit overload, do not operate another high wattage appliance on the same circuit.
22. Use distilled water in the appliance.
23. Be careful. Burns can occur from touching **HOT METAL PARTS, OR PROXIMITY TO HOT WATER OR STEAM.**
24. Do not let the cord hang over the edge of counter.

25. Always put the appliance in a secure and level place on a table or counter when using.
26. This unit is for household use only.
27. Do not allow cord to touch hot surfaces. Let appliance cool completely before putting away. Loop cord loosely around appliances when storing.
28. This appliance must be grounded. Do not alter the plug or attempt to defeat this feature.
29. Before plugging in the steam press, be sure the electrical information on the label agrees with your power supply.
30. Disconnect the appliance when not in use and when the mangle cloth is being replaced.

SAVE THESE INSTRUCTIONS



GETTING TO KNOW YOUR STEAM PRESS

1. The Pressing Handle raises and lowers the Pressing Plate.
2. The Locking Knob will lock together the Pressing Plate and the Ironing Board. Use this to carry or store the Steam Press.
3. The Pressing Plate is the temperature controlled surface that heats and presses the fabric.
4. The Ironing Board is the padded surface that holds the fabric during pressing. It has a removable cover that is washable.
5. The Water Tank.
6. The Steam Burst Buttons on either side of the Pressing Handle produce a burst of steam when pressed.
7. The ON/OFF Switch.
8. The Temperature Control Buttons are used to select a desired temperature by cycling through the list of choices above the buttons. Touch the Temperature Control Buttons until the indicator light beneath the type of material you are going to press becomes illuminated.
9. The Steam Selector Switch can choose Auto Steam “” or **Man** Steam “”.
10. The Power Indicator Light illuminates when On/Off Switch is set to the “On” position.
11. The Steam Ready Indicator Light illuminates once the unit is ready to produce bursts of steam, providing you with a clear visual indication that you can begin using the Steam.
12. The Pressing Indicator Light illuminates while the unit is heating to the selected temperature, and illuminates to provide a clear visual indication that you are ready to begin pressing.
13. The Temperature Digits indicates that Pressing Plate surface temperature.

- The **Power Cord Indicator Light** illuminates providing you with a clear visual indication that the unit is power on.
- The **Spray Bottle** allows you to moisten fabrics before pressing, helps to make the pressing process easier and more effective in certain instances.
- The **Pressing Cushion** is a fabric covered pad used for pressing gathered or contoured areas such as sleeves, darts, yokes.
- The **Measuring Cup** is designed to assist you in easily filling the Water Reservoir with water.

ABOUT THE AUTO SHUT-OFF

The Auto Shut- Off feature includes both an Auto **Shut - off** and an Auto Wake-Up. These multiple function safety features deactivate electrical power to the heater when the Pressing Plate has been left closed against the Ironing Board for more than 10 seconds. Heater deactivation is signalled by a beeping sound. Heater Functionality is restored when the Pressing Plate is raised back up. Power to the heater will also be cut if the Pressing Plate is in the raised position without use for approximately 15 minutes (once again signalled by a beeping sound) The heating ability of the unit can only be restored in this situation by pressing the ON/OFF Switch.

IMPORTANT: Auto Shut- Off does not mean that power to the unit is totally cut off. Power is always on, and The Power Cord Indicator Light will remain illuminated until Unplug the power cord.

FEATURES OF THE STEAM PRESS

Your Steam Press provides clean, professional results every time!

- Pressing surface is Twenty-four times larger than most hand-held irons
- Can reduce ironing time up to 50%
- Multiple dry and steam settings, burst setting to remove stubborn wrinkles
- Variable temperature control
- Automatic shut off safety feature while open or closed with audible alert
- Power indicator light
- Protects delicate fabrics like silk

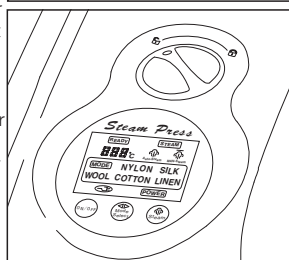
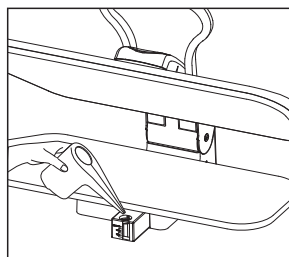
IMPORTANT: For Household Use Only

Filling Instructions:

Do not plug the unit in until you have filled the Water Tank

- Place Digital Fabric Steam Press on a flat, level surface.
- Push Locking Knob to Unlock position to unlock Pressing Plate.
- Lift up Pressing Plate using Handle. It will automatically stay in lifted position.
- Pull Water Reservoir out. Note that Water Reservoir cannot be completely removed from **the unit; do not** attempt to force it free.
- Remove Water Reservoir Cap to express Water Reservoir fill hole.
- Using Measuring Cup (included), fill Water Reservoir up to the MAX (300ml) line with distilled water.
- Replace Water Reservoir Cap and push filled Water Reservoir back into main unit.

DO NOT ATTEMPT TO PULL WATER RESERVOIR OUT COMPLETELY.



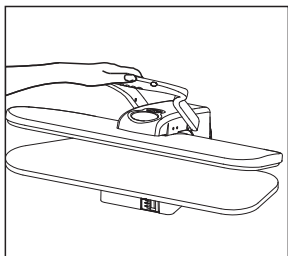
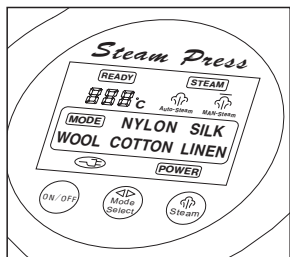
OPERATION INSTRUCTIONS

- Touch the ON/OFF Switch to the "on" position.
- Identify the type of fabric you will press and then select the temperature setting that matches the fabric to be pressed. It is best to start with the most delicate fabrics first, as higher heat will cause damage to Nylon and Silks.
- Lay fabric flat on Ironing Board.
- Digital Fabric Steam Press is ready for use when Pressing Indicator Light illuminates. If pressing wool, you may choose to spray with a burst of steam. This function is available once Steam Ready Indicator Light illuminates.

NOTE: Do not activate burst of steam with unit completely closed, as this may damage unit. Best results are obtained if Pressing Plate is held open approximately 75 mm above Ironing Board before pressing Steam Button. For safety reasons, do not hold Pressing Plate open more than 75 mm when using steam burst function.

5. To press, lower Pressing Plate gently onto fabric and Ironing Board. Hold there for 6-8 seconds, then lift up Pressing Plate. Repeat until you have achieved desired crease and smoothness.

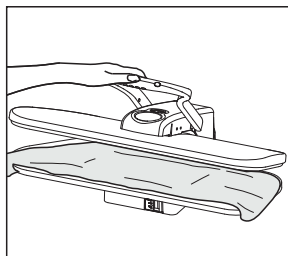
6. Once Pressing tasks are complete, immediately set On/Off Switch to "off" state.



TIPS PRESSING

MAN STEAM

1. Hold Pressing Plate approximately 3" above Ironing Board.
2. Press Steam Burst Button to release a burst of steam onto fabric.
3. Lower Pressing Plate onto fabric, then raise once again.
4. Repeat steps 1-3 above until fabric is smooth and wrinkle-free.



IMPORTANT NOTE

FOR BEST RESULTS, PRESS BUTTON FOR 2 SECONDS AND RELEASE.

AUTO STEAM

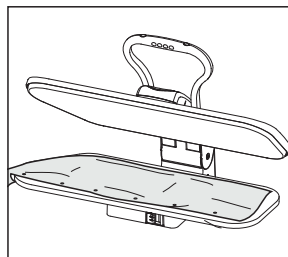
1. Hold Pressing Plate approximately 3" above Ironing Board.
2. The Press a u t o release a burst of steam onto fabric.
3. Lower Pressing Plate onto fabric, then raise once again.
4. Repeat steps 1-3 above until fabric is smooth and wrinkle-free.

STEAMING TIPS

Pressing Garments

1. Lay the garment on the Ironing Board.
2. Lower the steam plate and return to the open position after a few seconds.

NOTE: the unit will automatically turn off the heating plate after 10 seconds in the closed position. A beep will emit until the unit is opened. Once the unit is opened, it will return to normal operation.

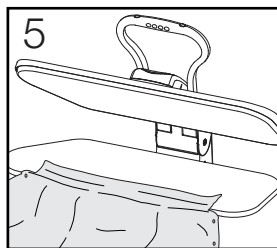
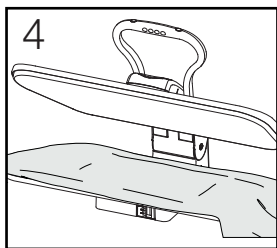
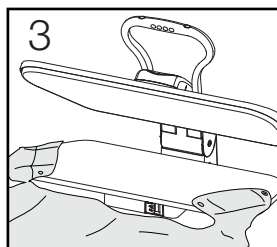
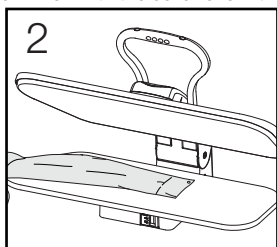
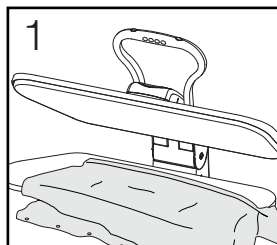


Wrinkle Removal

1. Lower the Steam Plate until it is slightly above the Ironing Board (about three inches).
2. Activate the Burst of Steam with the buttons on the sides of the Pressing Handle.
3. Wait a few seconds, and activate the Burst of Steam again.
4. Lower the Pressing Plate and then raise.
5. Repeat this process until all wrinkles have been removed.

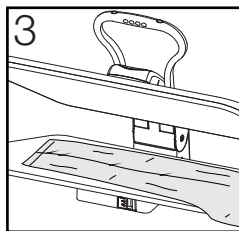
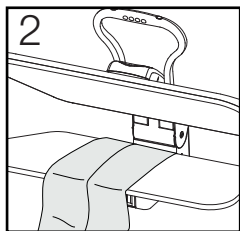
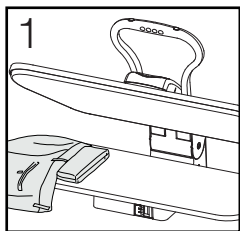
Shirts and Blouses

1. Place the shoulder yoke on the Ironing Board first and press.
2. Then place the sleeves on the Ironing Board with the fold parallel to the long seam and press.
3. Place the cuffs on the end of the board and press.
4. Place the bottom of the shirt ironing board so that you begin pressing the side with the pocket. Pull the shirt towards you as you Press each section.
5. Then finish with the collar of shirt.



Pants

1. Place the Pressing Cushion under the waistband and press, repositioning the waistband until completely pressed.
2. To press the in-seam, place the cushion under the area to be pressed.
3. Place the pleated area on the Ironing Board. Carefully fold pleats and press.
4. Embroidery should be placed face down on the Ironing Board to reduce wear and prevent damage to delicate areas.



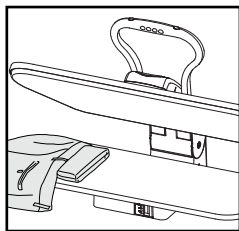
Other Techniques

1. Placing the pressing cushion between the fabric and the Pressing Plate may help with delicate fabrics.
2. Buttons and Zippers: if you have older types of buttons or zippers, you may need to take special care to avoid melting. In order to do so, place the garment face down and cover with a pressing cushion before pressing.
3. Spray bottle may be used to spray the fabric lightly. This will further help to remove stubborn wrinkles.

- Place a damp cloth over the fabric before pressing, which will help with stubborn wrinkles or heavy gauge fabrics.
- To press large pieces of fabric, place entire piece behind the Ironing Board. Pull the fabric towards you, over the Ironing Board, and lower the Pressing Plate. Press the fabric in sections until completed.

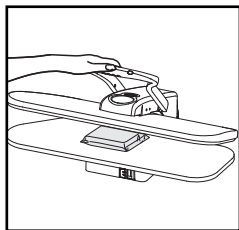
Using the Pressing Cushion

- For garments constructed with details such as darts, curved seams, and shoulder pads, a Pressing Cushion may be used.
- Use the cushion in areas where no creases are desired or to shape a tailored garment.
- Place the area to be pressed onto the Ironing Board.
- Place the Pressing Cushion under the dart, seam, etc.
- Making sure that the area to be pressed is raised, lower the Pressing Plate until it meets the raised area.
- Do not force the plate to its lowest position, as this may cause damage to the unit.



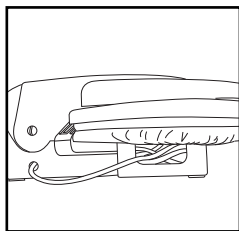
CLEANING THE STEAM PRESS

- Place the Pressing Cushion in the middle of Ironing Board.
- Place a clean towel over the Pressing Cushion and the Ironing Board.
- Set the temperature control Button to its highest setting(LINEN).
- When the Steam Ready Indicator Light illuminates, lower Pressing Plate onto the pressing cushion.
- Press the steam burst button six times.
- Allow the Pressing Plate to cool.
- Clean the pressing plate with a damp cloth.
- Do not use abrasives or you may damage the plate.
- The Ironing Board cover is removable for cleaning. Hand wash only with mild detergent.



STORAGE

- Once pressing is complete, immediately turn unit off and unplug power cord from electrical outlet.
- Allow unit to cool completely(at least 30 minutes).
- Lower pressing plate down; and push Locking Knob to "Lock" position.
- Wrap up power cord.
- Store all accessories safely away, preferably near Digital Fabric Steam Press.
- Store Digital Fabric Steam Press in a cool, dry place.
- For long-term storage, empty the water in the tank.



TROUBLE SHOOTING

Before taking the unit to a service center, please check the following list of common problems for your issue.

PROBLEM	POSSIBLE CAUSE	SOLUTION
Unit fails to steam. Power Indicator Light does not illuminate.	Unit is not plugged in.	Plug into electrical outlet.
	Household Circuit Breaker/ Ground Fault Interrupter has tripped or blown a fuse.	Reset Circuit Breaker/ Ground Fault Interrupter, or replace fuse. If you need assistance, contact a licensed electrician.
Unit fails to steam. Power Indicator Light does illuminate.	Auto Shut-Off has engaged.	Refer to Auto Shut-Off section on page 3 of this manual for proper procedure.
	Water Reservoir is empty.	Refill Water Reservoir using procedures on page 6 of this manual.
	Unit is damaged or malfunctioning.	Please contact our customer support department.
Steam Burst output is weak or intermittent.	Pressing Plate needs to be cleaned.	Refer to Cleaning the Digital Fabric Steam Press section on page 6 of this manual for proper procedure.

This electrical appliance complies with directive 2002/96/EC (Waste Electrical and Electronic Equipment---WEEE).



The meaning of the crossed-through waste bin symbol on the appliance is that the product must be disposed of separately to other household waste at the end of the useful life of the appliance. The user is responsible for delivering the appliance to an appropriate collection centre at that time.

Appropriate separate collection for environment-friendly treatment and recycling prevents or reduces harmful effect on the environment and human health. You can obtain information on available collection services in your area by contacting your local Council waste collection department, or the retailer from which you bought the appliance.