

# Care, Cleaning and Storage

- Ensure that the heater is switched OFF and disconnected from the power outlet before cleaning.
- Use a clean, dry cloth to clean the external surfaces of the heater. If the heater has collected dust or dirt inside the unit or around the elements, have the unit cleaned by a qualified service agent. Do not operate the heater in this condition.
- Do not attempt to open the case of the heater at any time as there are no customer serviceable parts inside.
- When not in use, store the heater (preferably in its original box) in a cool, clean and dry location.

## Kambrook - Australia

Building 2, Port Air Industrial Estate  
1A Hale Street  
Botany NSW 2019  
Australia  
Customer Service Line 1300 139 798  
Customer Service Fax 1800 621 337

[www.kambrook.com.au](http://www.kambrook.com.au)

## Kambrook - New Zealand

Private Bag 94411  
Botany, Manukau  
Auckland 2163  
New Zealand  
Customer Service Line/  
Spare Parts 0800 273 845  
Customer Service Fax 0800 288 513

[www.kambrook.co.nz](http://www.kambrook.co.nz)

# KAMBROOK

THE SMARTER CHOICE



## Upright Fan Heater

Suits KFH600/610/660 models

Instruction Booklet

# Important

Please retain your instruction book for future use.

In the event that you need some assistance with your Kambrook appliance, please contact our Customer Service Department on 1300 139 798 (Australia) or 0800 273 845 (New Zealand). Alternatively, visit us on our website at [www.kambrook.com.au](http://www.kambrook.com.au) or [www.kambrook.co.nz](http://www.kambrook.co.nz)

# Contents

Kambrook Recommends Safety First	p4
Your Kambrook Upright Fan Heater	p7
Quick Start Guide	p8
Using Your Kambrook Heater	p10
Care, Cleaning and Storage	p12

# IMPORTANT: Please retain your instruction book for future use.

At Kambrook, we believe that safe performance is the first priority in any consumer product, so that you, our valued customer can confidently use and trust our products. We ask that any electrical appliance that you use be operated in a sensible fashion with due care and attention placed on the following important operating instructions.

## Important Safeguards For Your Kambrook Upright Fan Heater

- Carefully read all instructions before operating the fan heater for the first time and save for future reference.
- Remove and safely discard any packaging material and promotional labels before using the fan heater for the first time.
- To eliminate a choking hazard for young children, remove and safely discard the protective cover fitted to the power plug of this fan heater.
- Always ensure the fan heater is properly assembled before use. Follow the instructions provided in this book.
- Extreme caution and supervision is necessary when this fan heater is used by or near children or invalids.
- Extreme caution and supervision is necessary when this fan heater is used near animals.
- Do not operate the fan heater on a sink or drain board.
- Do not allow materials that have been in contact with oil, petroleum based products or drying fluids to come in contact with the fan heater.
- Do not operate the fan heater on an incline plane. Do not move while the fan heater is switched on.
- Do not place the fan heater near the edge of a bench or table during operation. Ensure the surface is level, clean and free of water and other substances.
- Always keep combustible materials such as drapes and other furnishings at least 1.7 meters from the front, sides and rear of the heater.
- To prevent a possible fire or heat damage, allow ample space around the fan heater (at least 1.7m from the front and at the top and 0.5m at the rear and sides of the fan heater when it is intended for floor use) and do not totally or partially covered the fan heater in any manner. Check the unit's openings from time to time for accumulated dust. Ensure long shag carpet does not obstruct airflow of the unit.
- In order to avoid overheating do not cover the fan heater.
- Do not use this heater in the immediate surroundings of a bath, a shower or a swimming pool.
- Do not locate the fan heater immediately below and in front of a socket outlet when in use.
- Do not insert or allow foreign objects to pass through the inlet or outlet openings. This may cause an electric shock, fire or damage to the fan heater.
- Do not touch hot surfaces.
- Avoid touching fan heater body while it is on, some parts of the fan heater are hot. When moving the unit switch off and hold the fan heater by the handles where provided.

- Do not leave the fan heater unattended during use. Always switch off the fan heater at the controls and at the power outlet then unplug heater from the power outlet when not in use.
- Do not use the fan heater to dry your laundry.
- Do not operate fan heater whilst asleep.
- Do not use outdoors. This fan heater is not intended for commercial use such as construction sites.
- Do not use this fan heater with an external programmer, timer or any other devices that switches the fan heater ON automatically since a fire risk may exist if the heater is covered or positioned incorrectly.
- KFH600 heater is not equipped with a device to control the room temperature. Do not use KFH600 heater in small rooms when they are occupied by persons not capable of leaving the room on their own, unless constant supervision is provided.
- This fan heater is not intended for use in wet or moist locations. Do not immerse or allow liquids to be spilt on the fan heater.
- This fan heater has hot and arcing or sparking parts inside. Do not use in areas where petrol, paints, aerosols, or other inflammable substances are used or stored.
- Do not operate the fan heater with the power cord damaged, frayed or split, wound around any part of the fan heater, or in contact with the heated surfaces of the fan heater.
- Do not run the cord under the carpeting or cover the cord with rugs, runners or the like. Arrange the cord away from traffic areas and where it will not be tripped over or create a tripped hazard.
- Do not operate any fan heater with a damaged cord or plug, or if fan heater has been dropped or damaged in any manner. Return fan heater to your nearest Kambrook service centre for examination, electrical or mechanical adjustment or repair.
- Use this fan heater only as described in this instruction manual. Any other use not recommended by the manufacture may cause fire electric shock or injury and voids all warranties.
- To avoid an electrical overload. It is recommended that no other appliances are plugged into the same circuit as your fan heater when it is in use.
- This heater features a tip-over switch. If the heater tips over, it will automatically switch off. Once placed back in the upright position the heater will automatically switch on again.
- Switch off at the main On/Off switch and the power outlet, then unplug and allow heater to cool down before cleaning or storing.
- Regularly inspect the supply cord, plug, control settings, air inlets and outlets and main housing for any damage. If found damaged in any way, immediately cease use of the fan heater and return to Kambrook or an authorised service agent for inspection or repair.
- Keep the fan heater clean. Follow the cleaning instructions provided in this book.
- Do not mount heater on ceiling or walls.

# Important Safeguards For All Electrical Appliances

- Fully unwind the power cord before use.
- Connect only to 230V or 240V power outlet.
- Do not let the power cord hang over the edge of a bench or table, touch hot surfaces or become knotted.
- To protect against electric shock, do not immerse the power cord, power plug or appliance in water or any other liquid, unless it is recommended in the cleaning instructions.
- The appliance is not intended for use by persons (including children) with reduced physical, sensory or mental capabilities, or lack of experience and knowledge, unless they have been given supervision or instruction concerning use of the appliance, by a person responsible for their safety.
- Children should be supervised to ensure that they do not play with the appliance.
- It is recommended to inspect the appliance regularly. Do not use the appliance if the power supply cord, plug, connector or appliance becomes damaged in any way. Return the entire appliance to the nearest authorised Kambrook Service Centre for examination and/or repair.
- Any maintenance other than cleaning should be performed at an authorised Kambrook Service Centre.
- This appliance is for household use only. Do not use this appliance for other than its intended use. Do not use in moving vehicles or boats. Do not use outdoors. **Misuse may cause injury.**
- The installation of a residual current device (safety switch) is recommended to provide additional safety protection when using electrical appliances. It is advisable that a safety switch with a rated residual operating current not exceeding 30mA be installed in the electrical circuit supplying the appliance. See your electrician for professional advice.
- Always turn the appliance to the OFF position, switch off at the power outlet and unplug at the power outlet when the appliance is not in use.
- Before cleaning, always turn the appliance to the OFF position, switch off at the power outlet, unplug at the power outlet and remove the power cord, if detachable, from the appliance and allow all parts to cool.
- Do not place this appliance on or near a heat source, such as hot plate, oven or heaters.
- Position the appliance at a minimum distance of 20cm away from walls, curtains and other heat or steam sensitive materials and provide adequate space above and on all sides for air circulation.

# Your Kambrook Upright Fan Heater

1. 2 heat settings and fan only setting control
2. Variable thermostat control (KFH610 & KFH660 models only)
3. Swing switch to set oscillation (KFH660 only)
4. Power indicator light

## Not Shown

- Carry handle (at rear of unit)
- Safety tip-over cut-out switch
- ThermoGuard overheat protection
- 2400 watt heating element



*KFH600 model*



*KFH610 model*



*KFH660 model*

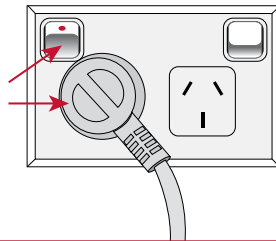


# Quick Start Guide

## Turning the heater ON



Ensure that the heat setting control dial is set to the 'OFF' position.



Plug the power cord into a 230V or 240V power point and switch on.

## Setting the heating mode



Turn the thermostat control to the 'MAX' position.



Turn the heat settings control to the desired heat setting mode; '1' Low (1200W), '2' High (2400W) or fan only mode.

## Setting the variable thermostat control



Turn the heat control to setting '2' and turn the thermostat control to the 'MAX' position to set the heater into high heat mode.



Once a comfortable room temperature has been reached, slowly turn the thermostat control towards the 'MIN' setting until a click sound is heard. The heater will now cut in and out to maintain the room temperature.

**Setting the oscillation  
(KFH660 only)**



This function will work in any mode. Switch the 'SWING' button to 'I' to activate. This will allow the heater to oscillate back and forth. To stop the unit oscillating, switch the 'SWING' button to '0'.

**Turning heater OFF**



Turn the heat control dial to the 'OFF' position, turn off at the power outlet and unplug from the outlet.

# Using Your Kambrook Heater

## Before First Use

Remove your heater from its carton and associated protective wrapping.

Unwind the cord to its full length and remove any protective cardboard or foam that may have been used to minimise transportation damage. Place the heater on a firm, level surface in a stable upright position.

Visually inspect the air inlet and outlets to ensure no foreign material is blocking these areas.

## Turning Your Heater On

Before turning the heater ON, turn the variable thermostat control (for KFH610 & KFH660 models only) to the minimum position, then turn the heat settings control to the 'OFF' position.

Plug the cord into a 230V or 240V electrical outlet and switch on. Be sure the plug fits tightly as a loose fit will cause overheating and damage the plug.




**WARNING:** To avoid an electrical circuit overload, it is recommended that no other appliances are plugged into the same circuit with your heater when you switch the unit on.

Turn the variable thermostat control to the maximum position, and then turn the heat setting control to the desired heat setting.

### The fan heater has four modes;

OFF - Shuts off the heater and fan


FAN  - For fan only operation

1 - Low heat setting (1200 watts)

2 - High heat setting (2400 watts)

Turning the heat settings control to setting '1' will set the heater into low heat mode (1200 watts).

Turning the heat settings control to setting '2' will set the heater to high heat mode (2400 watts).

Turning the heat settings control to fan mode  is for fan-only operation with no output of heat.

To turn the heater OFF, turn the heat setting control to the 'OFF' position, and turn the variable thermostat control (for KFH610 & KFH660 models only) to 'MIN' position. Turn off at the power outlet and remove the plug from the power outlet.



**WARNING:** This heater features a tip-over switch. If the heater tips over, it will automatically switch off. Once placed back in the upright position the heater will automatically switch on again.

## Setting the Variable Thermostat Control (For KFH610 & KFH660 models only)

The variable thermostat control can be used to maintain your desired room temperature.

1. To set the desired temperature, turn the heat setting control to setting '2' and turn the variable thermostat control to the 'MAX' position to set the heater into high heat mode.

2. Once the room temperature feels comfortable, turn the variable thermostat control slowly to the minimal position until a click sound is heard. This thermostat control is now activated and will automatically cycle the fan heater off and on to maintain the desired temperature.

## Setting the Oscillation (KFH660 only)

The oscillation function will work in all heat and fan modes. Switch the 'SWING' button to '1' to activate. This will allow the heater to oscillate back and forth. To stop the unit oscillating, switch the 'SWING' button to '0'.

## Safety Features

### Safety Tip-Over Cut-Out Switch

There is a tip-over switch fitted to the base of the heater. If the heater is accidentally tipped over, the heater will stop operating. Once placed back into the upright position, the heater will switch on again.

### ThermoGuard Overheating Safety Device

Your heater is fitted with a safety device that switches off the heater in the event of overheating. Should this heater stop working, turn off the heater and inspect the air inlet and outlet for blockages. Wait until the unit is fully cooled for the protection system to reset before attempting to restart the heater. If the heater fails to operate or the safety device switches off again, take the heater to your nearest Kambrook service centre for examination or repair.



**WARNING:** In order to avoid overheating do not cover the fan heater.



**WARNING:** KFH600 heater is not equipped with a device to control the room temperature. Do not use KFH600 heater in small rooms when they are occupied by persons not capable of leaving the room on their own, unless constant supervision is provided.

## Hints & Tips to Retain Heat in Your Home

- Don't overheat your home. The temperature of a heated room in winter should be 18-21°C.
- Your heater will work more efficiently if you stick to Kambrook's recommended clearance spaces.
- Choose the right size heater for the room type you want to heat.
- Zone off unoccupied rooms by closing doors and only heat the main living areas. Fit window coverings like curtains to halve winter heat loss.
- Put draft stoppers, such as a rolled up towel, at the bottom of outside doorways to keep out cold air.
- Keep the heat in and the cold out by installing wall and ceiling insulation.
- Avoid placing items too close to the heater (both at the front and back) for optimal air flow.