

KAMBROOK®



INSTRUCTION BOOKLET

KCP110

Important

Please retain your instruction book for future use.

In the event that you need some assistance with your Kambrook appliance, please contact our Customer Service Department on 1300 139 798 (Australia) or 0800 273 845 (New Zealand). Alternatively, visit us on our website at www.kambrook.com.au or www.kambrook.co.nz

Contents

Kambrook Recommends Safety First	p4
Your Kambrook Citrus Press	p6
Operating Instructions	p7
Care, Cleaning and Storage	p10

IMPORTANT: Please retain your instruction book for future use.

At Kambrook, we believe that safe performance is the first priority in any consumer product, so that you, our valued customer can confidently use and trust our products. We ask that any electrical appliance that you use be operated in a sensible fashion with due care and attention placed on the following important operating instructions.

Important Safeguards For Your Kambrook Citrus Press

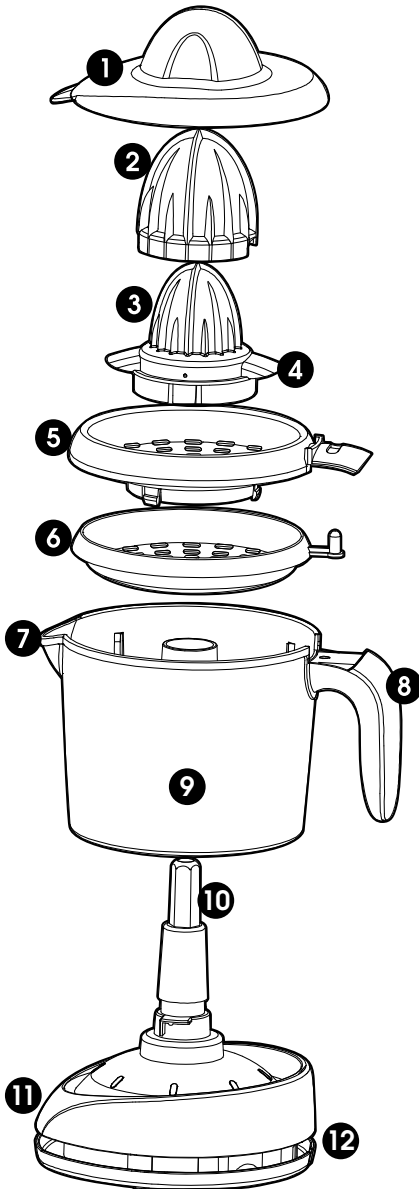
- Carefully read all instructions before operating the Kambrook Citrus Press for the first time and save for future reference.
- Remove and safely discard any packaging material and promotional labels before using the citrus press for the first time.
- To eliminate a choking hazard for young children, remove and safely discard the protective cover fitted to the power plug of this citrus press.
- When unpacking the citrus press, check to see you have received all the items listed in the parts list, before discarding the packaging.
- Always ensure the citrus press is properly assembled before use. Follow the instructions provided in this book.
- Always ensure the citrus press is properly and correctly assembled before operating.
- Always operate the citrus press on a stable and heat resistant surface.
- Do not place the citrus press near the edge of a bench or table during operation. Ensure that the surface is level, clean and free of water and other substances.
- Do not place the citrus press on or near a hot gas or electric burner, or where it could touch a heated oven.
- Use caution when operating the citrus press – do not place hands or fingers near moving or rotating parts.
- Ensure that the power source to be used is the same as the voltage requirements of the citrus press.
- Do not immerse the motor base, cord or plug in water or any other liquid.
- Always turn the power off at the power point and then unplug the power cord, before removing the strainer, cones and juice jug for cleaning.
- The motor base must not be immersed in water or other liquids or held under running water as this could give you an electric shock. Wipe the motor base with a damp cloth.
- Always switch off at the power outlet and then unplug when not in use, before adding or removing parts, before cleaning and when storing.
- Always turn the power off at the power outlet and then remove the plug before disassembling the unit.
- Do not operate the citrus press for more than 8 seconds continuously at one time. Allow the motor to cool between use.

- The storage lid is simply designed to sit on top of the citrus press to protect from dust when not in use. It does not lock onto the citrus press, so all care should be taken when moving the citrus press not to accidentally dislodge the lid. Ensure you use both hands to transport the citrus press.
- Do not place the citrus press in direct sunlight. Colour fading and discolouration may occur when the citrus press is consistently exposed to UV light.
- Do not use chemicals, steel wool, or abrasive cleaners to clean the outside of the citrus press.
- To prevent damage to the citrus press, do not use alkaline cleaning agents when cleaning; use a soft cloth and mild detergent.
- Do not leave the citrus press unattended when in use.
- Keep the citrus press clean. Follow the cleaning instructions provided in this book.

Important Safeguards For All Electrical Appliances

- Fully unwind the power cord before use.
- Connect only to a 230V or 240V power outlet.
- The appliance must be used on a properly grounded outlet. If it is not sure, please consult a qualified electrician.
- Do not, under any circumstances, modify the power plug or use a power plug adapter.
- Do not place this appliance on or near a heat source, such as hot plate, oven or heaters.
- Position the appliance at a minimum distance of 20cm away from walls, curtains and other heat or steam sensitive materials and provide adequate space above and on all sides for air circulation.
- Do not let the power cord hang over the edge of a bench or table, touch hot surfaces or become knotted.
- This appliance is for household use only. Do not use this appliance for anything other than its intended use. Do not use in moving vehicles or boats. Do not use outdoors. **Misuse may cause injury.**
- The appliance is not intended for use by persons (including children) with reduced physical, sensory or mental capabilities, or lack of experience and knowledge, unless they have been given supervision or instruction concerning use of the appliance by a person responsible for their safety.
- Children should be supervised to ensure that they do not play with the appliance.
- Always turn the appliance to the OFF position, switch off at the power outlet and unplug at the power outlet when the appliance is not in use.
- Before cleaning, always turn the appliance to the OFF position, switch off at the power outlet, unplug at the power outlet and remove the power cord, if detachable, from the appliance and allow all parts to cool.
- To protect against electric shock, do not immerse the power cord, power plug or appliance in water or any other liquid or allow moisture to come in contact with the parts, unless it is recommended in the cleaning instructions.
- Any maintenance other than cleaning should be performed at an authorised Kambrook Service Centre.
- It is recommended to regularly inspect the appliance. To avoid a hazard, do not use the appliance if power cord, power plug or appliance becomes damaged in any way. Return the entire appliance to the nearest authorized Kambrook Service Centre for examination and/or repair.
- The installation of a residual current device (safety switch) is recommended to provide additional safety protection when using electrical appliances. It is advisable that a safety switch with a rated residual operating current not exceeding 30mA be installed in the electrical circuit supplying the appliance. See a qualified electrician for professional advice.
- During electrical storms, the appliance should be disconnected from the power source at the wall socket to prevent any electrical surges that may arise during the storm and which may inadvertently cause damage to the appliance and its electronic componentry.

Your Kambrook Essentials Citrus Press



1. Transparent storage lid.
2. Large juicing cone – attaches to the small juicing cone for extracting juice from large citrus fruits, such as grapefruit and oranges.
3. Small juicing cone with drive shaft connection – perfect for juicing smaller citrus fruits, such as lemons and limes.
4. Scraper blades - at the base of the small juicing cone, helps prevent accumulation of pulp in the strainer dish as well as extract juice from the pulp.
5. Upper strainer – when used on it's own, helps to strain the pulp and seeds during juicing. When used with the lower strainer, allows the pulp and seed size to be adjusted to preference.
6. Lower strainer - when used with the upper strainer, has 5 settings that can be adjusted to allow more or less pulp and seeds to pass through into the juice jug.
7. Spout – for easy pouring.
8. Handle – for control when juicing and pouring.
9. Juice jug – collects up to 1 litre of juice.
10. Detachable drive shaft - attaches to the motor base to automatically rotate the juicing cone when downward pressure is applied during juicing. The drive shaft is reversible and will automatically move between clockwise and anti-clockwise rotation during juicing.
11. Motor base and juice jug holder.
12. Cord storage – wraps around motor base for easy storage.

Not Shown

- Cord
- Non-slip feet for stability

Operating Instructions

Before First Use

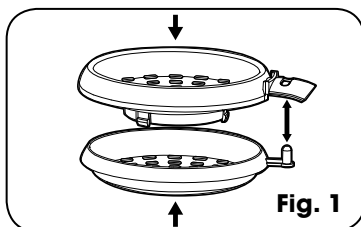
Before using the citrus press for the first time, rinse the cones, strainer, juice jug and storage lid with warm water and a few drops of washing-up liquid. Dry all parts thoroughly before assembling the citrus press.



WARNING: The motor base must not be immersed in water or other liquids or held under running water as this could give you an electric shock. Wipe the motor base with a damp cloth.

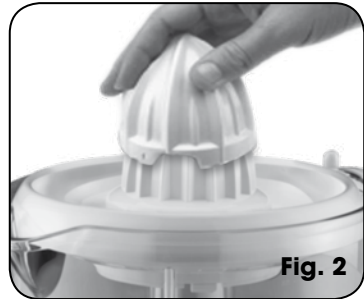
Assembling

1. Place the motor base on a flat, even surface. Attach the drive shaft to the motor base.
2. Position the juice jug over the shaft on the motor base. Align the juice jug handle with the arrow marked on the motor base and turn the juice jug clockwise until it locks into position.
3. This citrus press has adjustable pulp control by using two strainers. To assemble, align the lower strainer peg with the slot in the upper strainer (Fig. 1) and push together to click and lock into place.
4. Fit the strainers onto the juice jug aligning to the notch on the handle of the jug.



NOTE: The upper strainer can also be used on its own.

5. Place the small juicing cone onto the drive shaft. Use the small cone for juicing smaller citrus fruit.
6. To juice larger citrus fruit, with the small cone already in place, fit the large juicing cone on top, aligning the notches in the large cone to the scraper blades on the small cone (Fig 2).



7. When storing, assemble as per these instructions and place the storage lid on top.

Operating Instructions continued

Juicing

1. Stand the citrus press on a dry, even surface that is easy to clean. Fully unwind the power cord from the wrap around cord storage on the motor base.
2. Connect the power plug to a 230V or 240V power outlet and turn the power on.
3. Remove the storage lid.
4. Fit the appropriate citrus juicing cone onto the drive shaft to suit the citrus that is being juiced (see suggested juicing cone size table on page 9).

NOTE: Only the small juicing cone fits onto the drive shaft. The large juicing cone can only be used when attached to the small juicing cone.

5. Using the two strainers locked together allows the slide selector to adjust the level of pulp and seeds that fall into the juicing jug. Slide the pulp selector between the five settings to preference.
6. Select your choice of citrus fruit, wash and cut in half.
7. Press the halved fruit down onto the top of the juicing cone to activate the citrus press. The juicing cone will start to turn and juice will begin to flow into the juice jug. Lifting the citrus fruit off of the juicing cone will stop rotation. To restart, press the fruit down on the cone.

8. Stopping and starting downward pressure on the cone may cause the citrus press to change its rotational direction. This is normal and assists with maximum juicing.
9. Continue juicing until the fruit half is well-juiced or for about 5-7 seconds. Juice citrus halves until the quantity desired is reached, not exceeding the 1.0 litre of juice maximum level of the juice jug. During juicing, monitor the level of pulp and seeds in the strainer and empty if required (see NOTE below).



WARNING: Do not operate the citrus press for more than 8 seconds continuously at one time. Allow the motor to cool between use.

NOTE: The strainer should be emptied when full of pulp and seeds. The strainer can be emptied during juicing by turning the juicer off at the power outlet and carefully removing the juicing cone(s) and strainers. Clean and replace the strainers and juicing cone(s) before continuing use. Do not allow the strainers to overfill as this may prevent correct operation or damage the unit.

10. When juicing is completed, switch the power off at the power outlet and unplug the power cord from the power outlet before disassembling.
11. Hold the handle securely and turn the juice jug anti-clockwise to unlock and lift upwards away from the drive shaft and motor base.
12. Remove the strainers and cone(s) before pouring the collected juice into a serving glass. Alternatively, place the storage lid on the juice jug until ready to pour.



WARNING: The transparent storage lid is simply designed to sit on top of the citrus press to protect from dust when not in use. It does not lock onto the citrus press, so all care should be taken when moving the citrus press not to accidentally dislodge the lid. Ensure you use both hands to transport the citrus press.

NOTE: To maximise the quantity of juice extracted from the fruit, press the fruit half onto the cone several times and squeeze lightly.

Suggested Cone Size Table

Fruits	Small Cone	Large Cone
Orange (Large)		✓
Orange (Small)	✓	
Lemon (Large)		✓
Lemon (Small)	✓	
Lime (Large)	✓	
Lime (Small)	✓	
Grapefruit		✓

Care, Cleaning and Storage

Before cleaning, ensure the power outlet is switched off and then remove the power plug from the power outlet. Always clean your citrus press after each use to prevent a build-up of pulp and juice.

1. Remove the storage lid, citrus cone(s), strainers, juice jug & drive shaft from the motor base. Separate the cone from the strainer and then the large cone (if used) from the small cone for cleaning.
2. Separate the 2 strainers by pushing the pulp selector knob down (A), while pushing inwards on Clip 1 (part B). If the strainers do not come apart, press inwards on Clip 2 (part C), then Clip 3 (part D), in that order, to help disengage the bottom strainer from the top strainer. Refer to Fig. 3 for details.

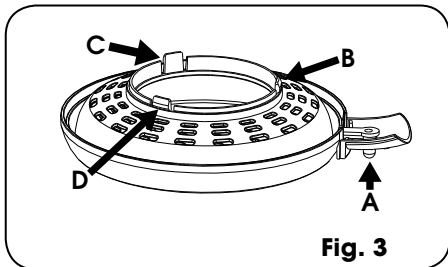


Fig. 3

3. Clean all removable parts in warm, soapy water, then rinse and dry thoroughly. To clean the motor base, including the drive shaft, wipe with a damp cloth before drying.

NOTE: The drive shaft can be removed and washed as per other removable parts if required, however, always wipe down with a damp cloth before removing from the motor base.



WARNING: Do not immerse the motor base, cord or plug in water or any other liquid.

Recommended

It is best to rinse or wash all removable parts immediately after use as dried citrus pulp is difficult to remove and may stain.

Storage

To store the citrus press:

1. Ensure the power is switched off at the power outlet and then unplug the power cord from the power outlet.
2. Clean and dry all the parts of the citrus press immediately after use and before storing.
3. Re-assemble the unit as per instructions in the Assembling section on page 7 of this book.
4. Wrap the cord around the cord storage on the motor base and set the storage lid on top of the citrus press before storing.

Kambook - Australia

Ground Floor, Suite 2, 170-180 Bourke Rd
Alexandria NSW 2015, Australia

Locked Bag 2000

Botany NSW 1455

Customer Service Line 1300 139 798

Customer Service Fax 1800 621 337

www.kambook.com.au

Kambook - New Zealand

Private Bag 94411

Botany, Manukau

Auckland 2163, New Zealand

Customer Service Line/

Spare Parts 0800 273 845

Customer Service Fax 0800 288 513

www.kambook.co.nz

KAMBROOK

Kambook and the Kambook logo are trademarks of Breville Pty. Ltd.
A.B.N 98 000 092 928.

All other brand names may be trademarks of their respective owners.

Made in China to our exact specifications.

Due to continual improvement in design or otherwise, the product you purchase may differ slightly from the illustration in this book. Issue A19