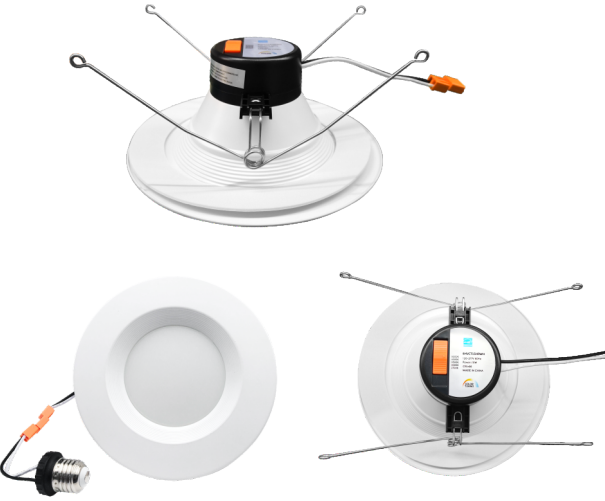




V2 5CCT commercial downlights



Date: Location:

Product: Project:

Quantity: Catalog#

FEATURES

- 6in 8in 3 Watts 5 CCT all in one.Replaces legacy CFL, HID or incandescent downlights
- Provides comfortable diffused light with no dark spots
- Dimmable to 10% with a wide array of dimmers
- Pre-wired with poke-in connectors for easy installation
- safety chain for secure installation onto existing ceilings

SUITABLE APPLICATIONS

- Office Lighting
- Meeting room lighting
- Store lighting
- Restaurant lighting

CONSTRUCTION:

Alluminum housing,Integrated trim with snap clips.

ELECTRICAL:

Available as 120-277V input. -20°C to 45°C.

OPTICAL SYSTEM:

High transmission PC lense,100°beam angle

INSTALLATION&MOUNTING:

Different open hole size by flash mounting with clips for easy installation.

WARRANTY:

5-year limited warranty. Actual performance may differ as a result of end-user environment and application.


PERFORMANCE

| Model NO | TunableWattage | dimmable | Voltage/CurrentInput | | Size | Light Efficiency | Tunable CCT |
|-------------|----------------|----------|----------------------|---------|-------|------------------|-----------------|
| | | | 120V(A) | 277V(A) | | | |
| 6HVCT15HRWH | 15W | 0-10V | 0.12 | 0.05 | 6inch | 90-100LM/W | 27/30/35/40/50K |

Electric Characteristic

| | |
|-------------------------|----------------------|
| Specification/Model | 6HVCT15HRWH |
| LED Driver | UL Driver |
| Input power | 15W |
| Lumens output | 1200LM |
| Efficiency | 80LM/W |
| CRI | >90 |
| Color Temperature | 5 CCT |
| Input voltage | 120-277V/AC |
| Light distribution type | 100D |
| Working temperature | -20+45°C |
| Junction temperature | <75°C |
| lamps efficiency | ≥90% |
| Certificate | ENERGY STAR ETL cETL |
| Equivalent | 24-60W MH/HPS |


OPTIONAL ACCESSORIES



Emergency Battery Backup.Style LSED20W

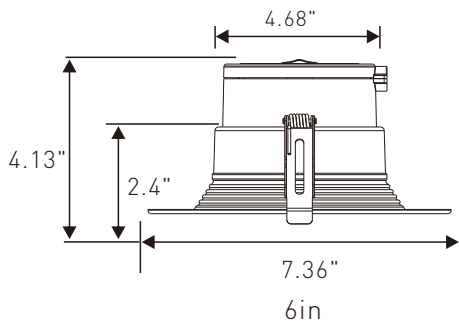
CCT tunable

2700K 3000K 3500K 4000K 5000K



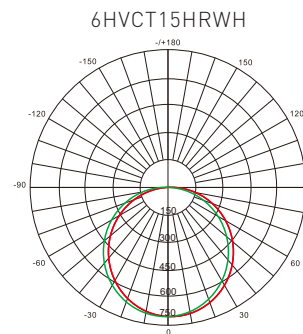
5 CCT

DIMENSION



DISTRIBUTION DIAGRAM

DISTRIBUTION DIAGRAM



AVERAGE BEAM ANGLE(50%): 120°

UNIT:CD

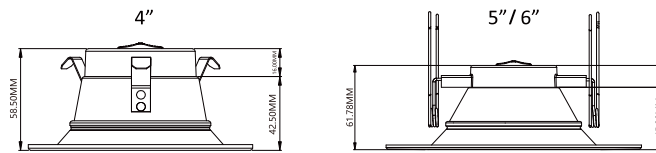
Test Number:6HVCT15HRWH - C0/180,110.9

Lumens:1200LM - C30/210,110.5

Test Number:15W - C60/240,109.3.

Test Number:5000K - C90/270,109.1

Installation Instructions



TURN OFF POWER AT FUSE BOX PRIOR TO INSTALLING:

STEP 1. Remove the existing lamps and trim. (fig 1)

STEP 2. Screw the E26 connector piece into the existing socket. (fig 2)

STEP 3. Select color temperature desired on fixture back. (see below)

For 4" retrofit:

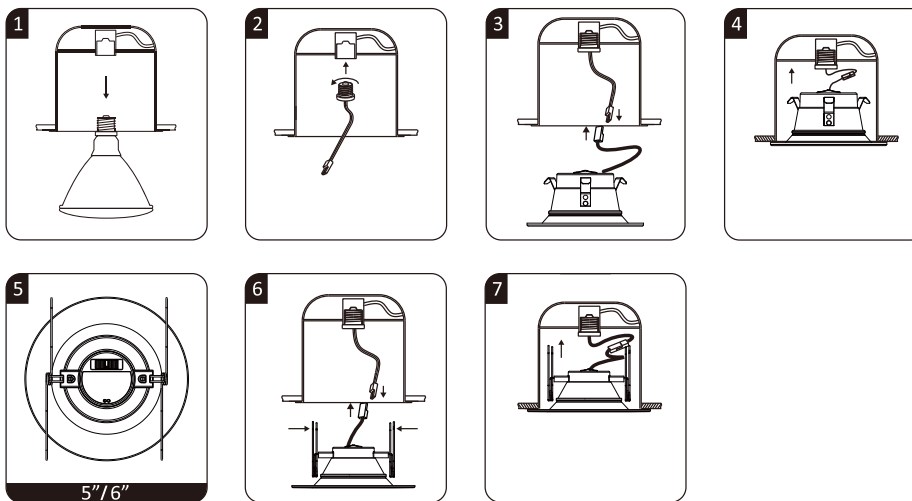
STEP 4. Connect the terminals from E26 socket to fixture. (fig 3)

STEP 5. Push fixture up into can, ensuring it is flush with ceiling. (fig 4)

Note: For 5"/6" retrofit:

STEP 6. Connect the terminals from E26 socket to fixture. (fig 3)

STEP 7. Press spring clips together, push fixture up into can (fig 6) and release once in, continue pushing until flush with ceiling. (fig 7)

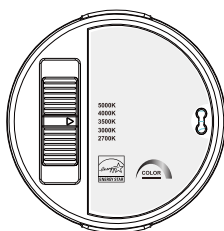


Removing LED Luminaires:

1. With fingertips, pull down firmly on trim ring until fixture stops.
2. Squeeze torsion springs together to remove LED fixture.

3. Disconnect Fixture from socket adapter.
4. Unscrew socket adapter from recessed can.

TURN POWER BACK ON AND ENSURE FIXTURE IS WORKING PROPERLY.



The CCT tunable selector switch on the fixture's back, allows the user to choose between 2700K, 3000K, 3500K, 4000K, and 5000K.

V2 5CCT commercial downlights



Please read and understand this entire manual before attempting to assemble, operate or install the product.

WARNING: Avoid fire or electric shock. Follow installation instructions carefully. Risk of fire or electric shock. LED downlight installation requires knowledge of luminaire electrical systems. If not qualified, do not attempt installation. Suitable for damp locations.

Install this kit only in luminaires that have the construction features and dimensions shown in the photographs and/or drawing and where the input rating of the retrofit kit does not exceed the input rating of the luminaire. Wear rubber-soled shoes and work on a sturdy ladder. Ground fixture to avoid potential electrical shock. Do not make or alter any open holes in an enclosure of wiring or electrical components during kit installation. To prevent wiring damage or abrasion, do not expose wiring to edges of sheet metal or other sharp objects.

CAUTION: Turn off the power at fuse or circuit breaker box before installation and maintenance to avoid electric shock. This fixture should be used on 120V fused circuits only. Fixture must be installed according to National Electric Code and local building codes. If you are unsure about wiring, consult a qualified electrician. THIS FIXTURE BODY IS ONE PIECE, DO NOT DISASSEMBLE OR MAKE ALTERATIONS. Not to be used for emergency lighting.

Operation is subject to the following two conditions: (1) this device may not cause harmful interference, and (2) this device must accept any interference received, including that may cause undesired operation.

Retain these instructions for future maintenance reference.

