

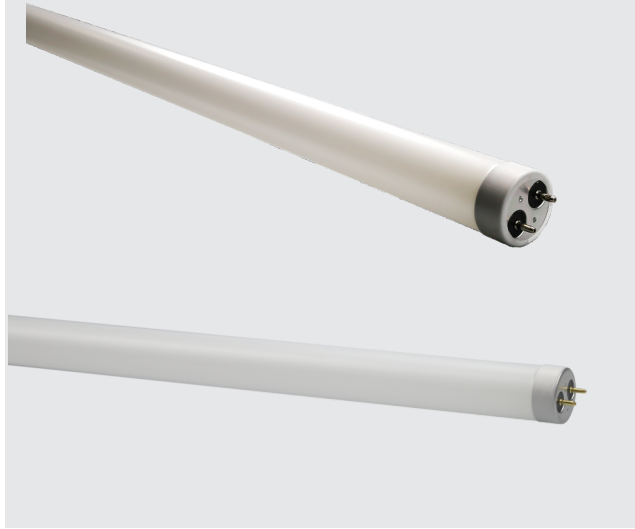


# Hybrid Shatter-proof Glass Tube

Date:..... Location: .....

Product:..... Project:.....

Quantity:..... Catalog# .....



## FEATURES

- A:Compatible with most instant- and programmed-start electronic T8 ballasts
- B:Direct wire single end / double end power.
- Shatter-proof coating material tubes
- 50,000+ hour lifetime
- Suitable for dry and damp indoor locations
- Operating temperature -4°F to +113°F
- ETL DLC PREMIUM Listed

## SUITABLE APPLICATIONS

- Office Lighting
- Meeting room lighting
- Store lighting
- Restaurant lighting



## CONSTRUCTION:

Shatter-Proof coating Glass,high lumen out Led Chip

## ELECTRICAL:

Available as 120-277V input. -4°F to +113°F

## OPTICAL SYSTEM:

High transmission glass lens,>220°beam angle

## INSTALLATION&MOUNTING:

Hybrid Plug and play  
or bypass ballast with Single- or double-ended wiring

## WARRANTY:

5-year limited warranty. Actual performance may differ as a result of end-user environment and application.

## PERFORMANCE

Model NO	Wattage	Voltage/Current Input		Size[G13]	Light Efficiency	CCT
		120V(A)	277V(A)			
LS-T8UAB4FT18-T	18W	0.15	0.064	4' LED T8 Tubes	130LM/W	30/35/40/45/50/57/65K
LS-T8UAB4FT15-T	15W	0.125	0.054	4' LED T8 Tubes	140LM/W	30/35/40/45/50/57/65K
LS-T8UBB4FT12-T	12W	0.10	0.043	4' LED T8 Tubes	145LM/W	30/35/40/45/50/57/65K
LS-T8UBB2FT10-T	10W	0.08	0.036	2' LED T8 Tubes	150LM/W	30/35/40/45/50/57/65K

## Electric Characteristic

### PRODUCT ORDERING GUIDE

LS-T8UBB4FT18-T  
1 2 3 4 5

[LS] - [T8U] [A] B [4FT] [18] -T

- LS Factory code
- T8U T8 Universal Tube
- AB Type A+B
- 4FT 4'       18 Wattage

### OPTIONAL EMERGENCY TUBE

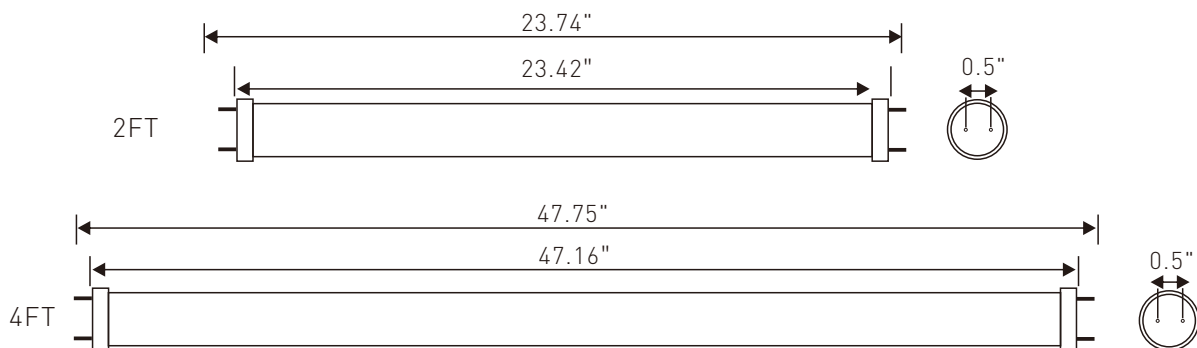
Emergency LED TUBE Backup.  
CODE: EMT8-18WBC-50K



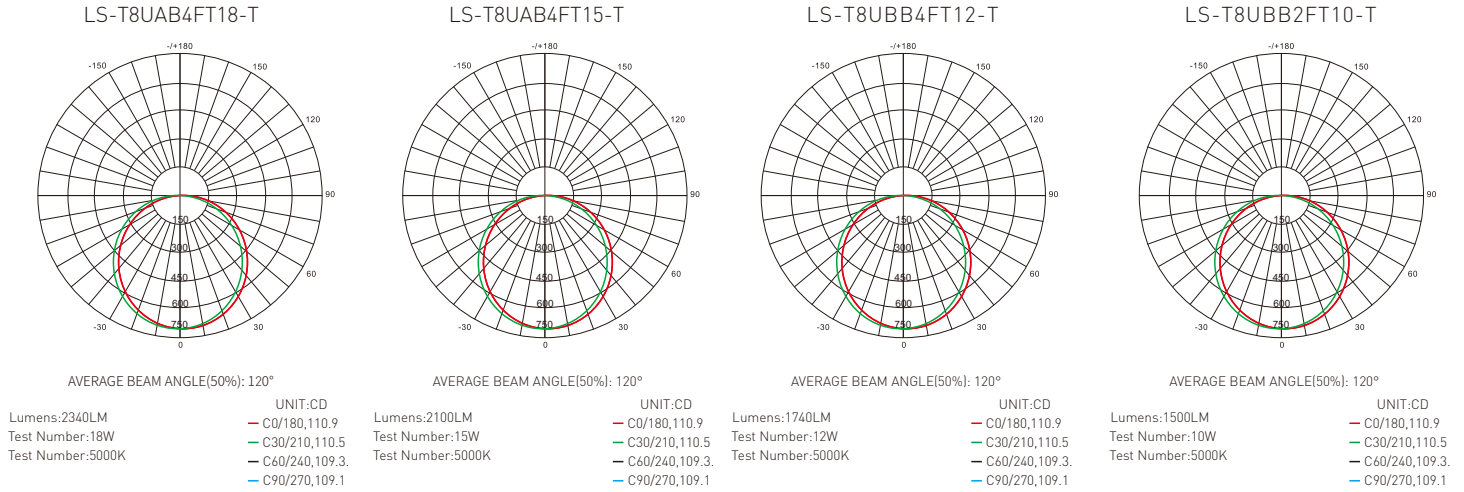
## Electric Characteristic

Specification/Model	LS-T8UAB4FT18-T	LS-T8UAB4FT15-T	LS-T8UBB4FT12-T	LS-T8UBB2FT10-T
LED Driver	ULTYPE A+B	ULTYPE A+B	UL TYPE B	UL TYPE B
Input power	18W	15W	12W	10W
Lumens output	2340LM	2100LM	1740LM	1500LM
Efficiency	130LM/W	140LM/W	145LM/W	150LM/W
CRI	>80	>80	>80	>80
Color Temperature	30/35/40/45/50/57/65K	30/35/40/45/50/57/65K	30/35/40/45/50/57/65K	30/35/40/45/50/57/65K
Input voltage	120-277V/AC	120-277V/AC	120-277V/AC	120-277V/AC
Light distribution type	220D	220D	220D	220D
Working temperature	-4°F to +113°F	-4°F to +113°F	-4°F to +113°F	-4°F to +113°F
Junction temperature	<75°C	<75°C	<75°C	<75°C
lamps efficiency	≥90%	≥90%	≥90%	≥90%
Certificate	ETL DLC	ETL DLC	ETL DLC	ETL DLC
Equivalent	24-80W MH/HPS	24-80W MH/HPS	24-80W MH/HPS	24-80W MH/HPS

## DIMENSION



## DISTRIBUTION DIAGRAM

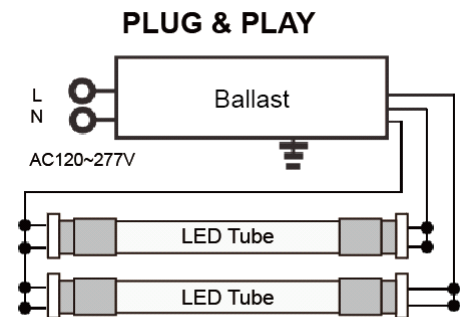


## INSTALLATION INSTRUCTIONS

### DIRCT REPLACEMENT (WITH EXISTING BALLAST)

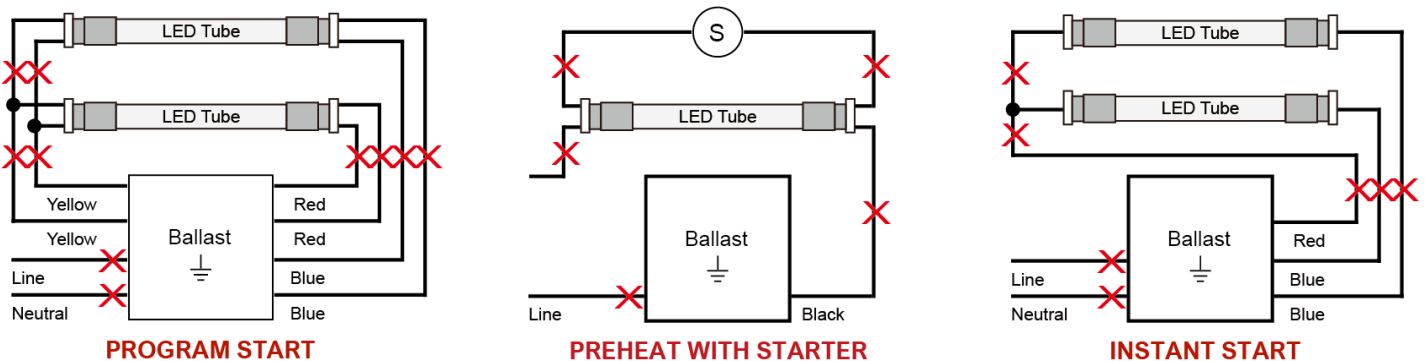
\* Warning: Check Ballast Compatibility List before installation

1. Turn power off.
2. Remove lens or diffuser, if applicable.
3. Remove existing fluourescent lamp(s) from the luminaire.
4. Install the LED replacement lamp(s), one lamp for each fluourescent lamp removed\*
5. Replace lens or diffuser back in place, if applicable.
6. Turn power back on.



### BY-PASS REPLACEMENT (WITHOUT BALLAST)

1. Disconnect power from fixture.
2. Remove fluourescent lamps.
3. Remove lens and wiring compartment, if applicable.



4. Cut all wires connected to ballast [see Figure A: Typical Ballast Configurations].

