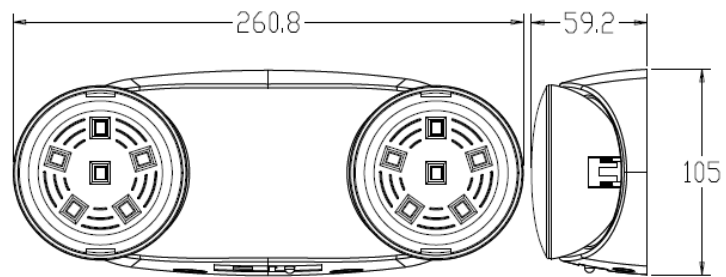


# LS - EML012 LED Emergency Light

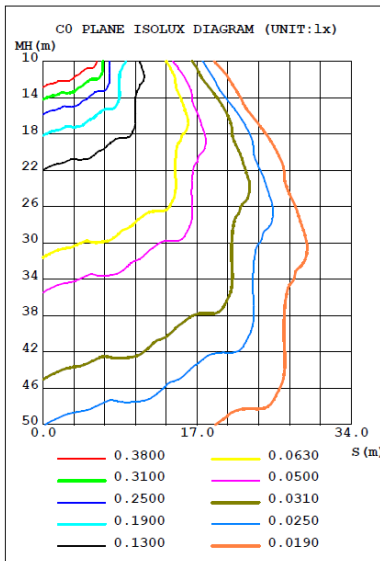
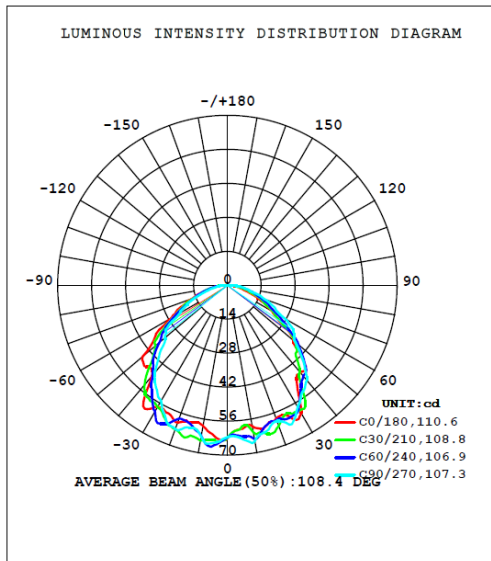


## FEATURES

- Injection-molded thermoplastic ABS housing
- UL-94V-0 flame rating, fire-resistant
- Input Voltage: 120-277V
- Power consumption: 2W max.
- Output: 2.4W max.
- 3.6V Nickel Cadmium Battery
- Charging time: 24 hours
- Discharge time: 90 minutes
- Operating temperature: 0°C~40°C
- Dimension: 260.8\*105\*59.2mm



## PHOTOMETRIC



## ORDER INFORMATION

Model	Voltage	Emergency Duration	Certificate
LS -EML012	120/277V	90 minutes	UL, CUL
LS -EML012D	110-240V	180 minutes	N/L
LS -EML012COB	110-240V	180 minutes	N/L