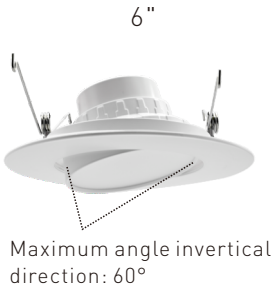




4/6" 5CCT Gimbal downlight LED



Date: ..... Location: .....

Product: ..... Project: .....

Quantity: ..... Catalog# .....

### FEATURES

- 4in/6in 5 CCT gimbal downlight. Replaces legacy CFL, HID or incandescent downlights
- Provides comfortable diffused light with no dark spots
- Triac Dimming
- Pre-wired with poke-in connectors for easy installation
- safety chain for secure installation onto existing ceilings

### SUITABLE APPLICATIONS

- Office Lighting
- Meeting room lighting
- Store lighting
- Restaurant lighting

### CONSTRUCTION:

Alluminum housing, Integrated trim with snap clips.

### ELECTRICAL:

Available as 120V input. -20°C to 45°C.

### OPTICAL SYSTEM:

High transmission PC lense, 100° beam angle

### INSTALLATION & MOUNTING:

Different open hole size by flash mounting with clips for easy installation.

### WARRANTY:

5-year limited warranty. Actual performance may differ as a result of end-user environment and application.

### PERFORMANCE

Model NO	Tunable Wattage	Dimmable	Voltage/Current Input		Size	Light Efficiency	Tunable CCT
			120V(A)				
4HVCT10GRWH	10W	Triac Dimming	0.08		4inch	65-75LM/W	27/30/35/40/50K
6HVCT16GRWH	16W	Triac Dimming	0.13		6inch	65-75LM/W	27/30/35/40/50K

➤ Electric Characteristic

Specification/Model	4HVCT10GRWH	6HVCT16GRWH
LED Driver	UL Driver	UL Driver
Input power	10W	16W
Lumens output	750LM	1200LM
Efficiency	75LM/W	75LM/W
CRI	>90	>90
Color Temperature	27/30/35/40/50K	27/30/35/40/50K
Input voltage	120V/AC	120/AC
Light distribution type	100D	100D
Working temperature	-20+45°C	-20+45°C
Junction temperature	<75°C	<75°C
lamps efficiency	≥90%	≥90%
Certificate	ENERGY STAR ETL cETL	ENERGY STAR ETL cETL
Equivalent	20-40W MH/HPS	35-50W MH/HPS

PRODUCT ORDERING GUIDE

4HVCT10GRWH  
1 2 3 4 5 6 7

4 HV CT 10 G R WH

- 4 DIMENSION
- HV MODEL
- CT CCT
- G Gimbal
- R Round
- WH White

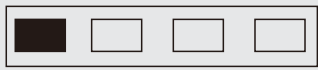
OPTIONAL ACCESSORIES



Emergency Battery Backup.Style LSED20W



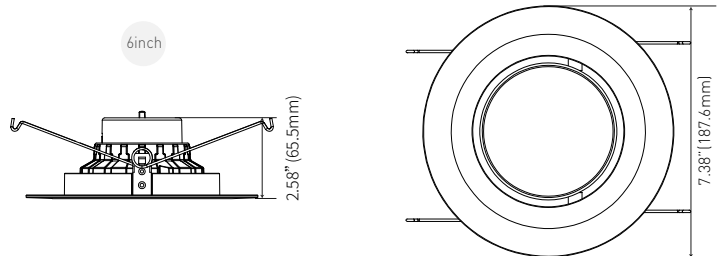
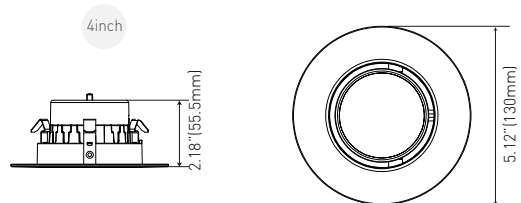
2700K 3000K 4000K 5000K



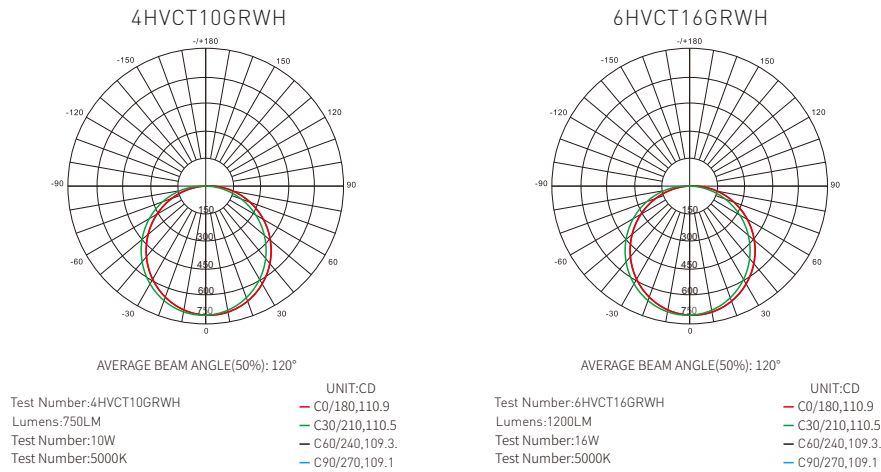
CCT tunable

CCT

DIMENSION

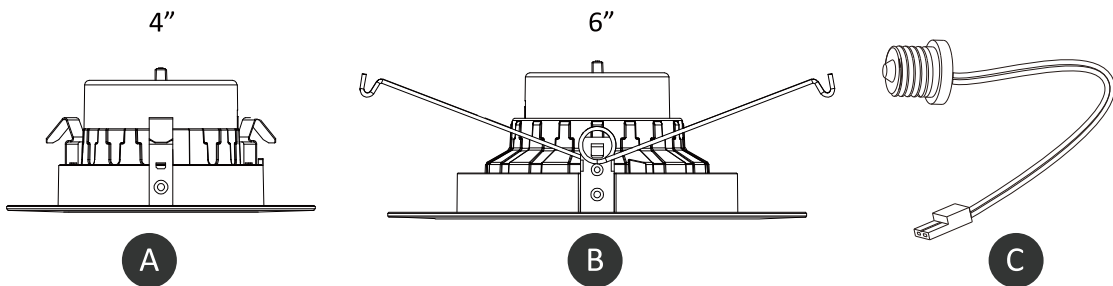


## DISTRIBUTION DIAGRAM



## INSTALLATION INSTRUCTIONS WARNING

### 4/6 INCH 5CCT Gimbal Retrofit Kit



## PACKAGE CONTENTS

PART	DESCRIPTION	QUANTITY	PART	DESCRIPTION	QUANTITY
A	4inch 5CCT Gimbal Retrofit Kit	1	B	6inch 5CCT Gimbal Retrofit Kit	1
C	E26 Adapter	1	D	E26 Adapter	1

## DIMMER RECOMMENDATION

This unit may operate on other dimmers we haven't tested with.

LEVITON	6672,RNL06,IPL06,DSL06,6674
LEVITON	TG-600PR-WH, S-600PR-WH,CTCL-153PDH-WH,TGCL-153PH-LA,SLV-600P-AL,DV-600PR-WH, SCL-153PH-WH, GT-600P, DVCL-153P,MSCL-OP153M, PD-6WCL , MACL-153M//MA-R

Please read understand this entire manual before attempting to assemble, operate or install the product.

**WARNING** -Risk of fire or electric shock. Installation of this retrofit kit requires a person familiar with the construction and operation of the luminaire's electrical system and the hazard involved. If not qualified, do not attempt installation. Contact a qualified electrician.

**WARNING** - Risk of fire or electric shock. Install this kit only in the luminaire that has the construction features and dimensions shown in the photographs and/or drawings and where the input rating of the retrofit kit does not exceed the input rating of the luminaire.

**WARNING** -To prevent wiring damage or abrasion, do not expose wiring to edges of sheet metal or other sharp objects.

This retrofit kit is accepted as a component of a luminaire where the suitability of the combination shall be determined by authorities having jurisdiction, product must be installed by a qualified electrician in accordance with the applicable and appropriate electrical codes. The installation guide does not supersede local or national regulations for electrical installations.

**WARNING** - Risk of fire or electric shock. Luminaires wiring, power supply, or other electrical parts may be damaged when drilling for installation of retrofit kit hardware. Inspect wiring and components for damage.

Only those open holes indicated in the photographs and/or drawings may be made or altered as a result of kit installation. do not leave any other open holes in an enclosure of wiring or electrical components.

This device is not intended for use with emergency exits.

Do not make or alter any open holes in an enclosure of wiring or electrical components during kit installation.

Suitable for Damp Locations.

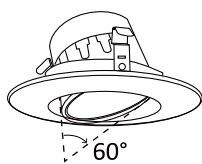
Make certain power is off from the electrical panel before starting installation or attempting any maintenance.



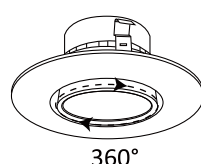
## ANGLE & CCT ADJUSTMENT

### Angle map and warning words:

Maximum angle in vertical direction: 60°

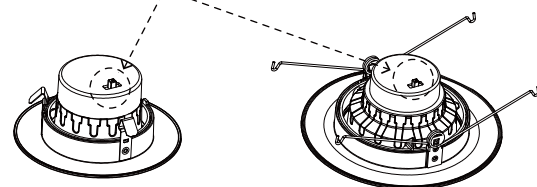


Maximum angle in horizontal direction: 360°



please select lamp color desired with the cct switch before installation.

Selectable 5CCT: 2700K, 3000K, 3500K, 4000K, 5000K



## INSTALL INTO HOUSINGS

### TURN OFF POWER AT FUSE BOX BEFORE INSTALLING:

STEP 1: Screw the E26 socket adapter into the existing socket. (Fig1)

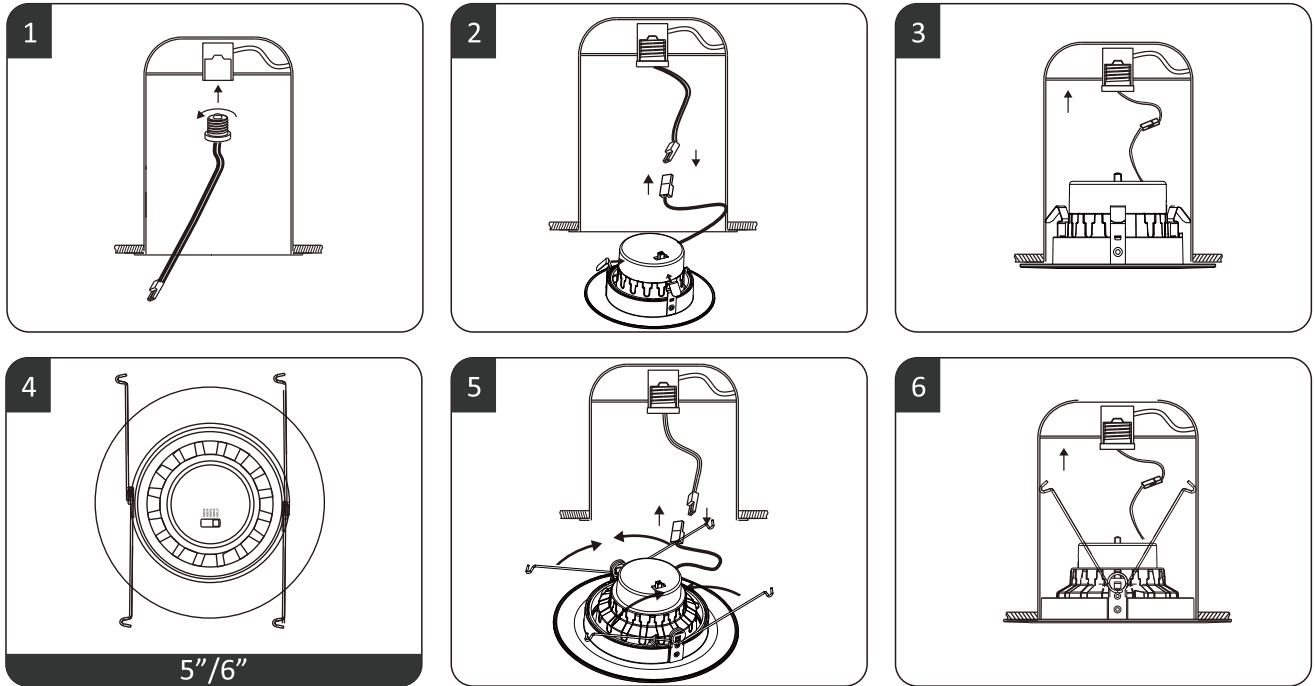
STEP 2: Connect the terminals from E26 socket adapter to the fixture. (Fig2, Fig5)

#### For 4" Retrofit:

STEP 3: Push fixture up into can, ensuring it is flush with ceiling. (Fig3)

#### For 5/6" Retrofit:

STEP 3: Press spring clips together, push fixture up into can and release once in, continue pushing until flush with ceiling. (Fig6)



#### REMOVING LED LUMINAIRES

1. With fingertips, pull down firmly on the trim ring until the fixture stops.
2. Squeeze the torsion springs together to remove the LED fixture.
3. Disconnect the fixture from E26 socket adapter.
4. Unscrew the E26 socket adapter from the recessed can.