

EASY DIY DOLL CLOTHES



SUPPLIES:

- **SOCKS**
- **SCISSORS**
- **OPTIONAL:**
 - **HOT GLUE GUN**
 - **NEEDLE AND THREAD**
 - **SEWING MACHINE**
 - **RIBBON**

Get socks for your projects at
www.funsockcity.com
© 2021 Fun Sock City, Inc.



Simple Basic Dress

1. Cut the sock at desired length (see Cut A)
2. Cut 2 slits 1" long, on each side (see Cut B and C) near the top of the sock.
3. Slide the dress onto the doll from her feet, putting the arms into the arm holes once the dress is at waist level, and then finish sliding the dress on.



Easy Halter Swimsuit

1. Cut out two leg holes in the toe of the sock as shown in Pic 1.
2. Cut the heel out as shown in Pic 2.
3. Do an angled cut to create the neckline (see Pic 3, yellow line).
4. Cut the top skinny strip on the back to create the halter straps (see Pic 3, pink line).
5. Slide the swimsuit on from the feet and tie the halter straps around the neck.



Sweet Winter Hat & Dress

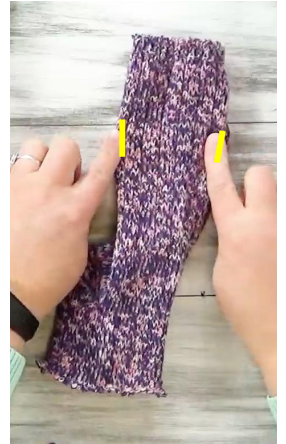


1. At the toe of the sock, cut off about 3-4 inches. The toe creates the hat (see Pic 1).
2. On the remaining portion of the sock, decide which end will be the top of the dress.
3. Then come down about 2" from the top and cut 1" slits on each side to create the arm holes (see Pic 2).
4. Slide the dress onto the doll from her feet, putting the arms into the arm holes once the dress is at waist level, and then finish sliding the dress on.
5. Roll the top collar to create a turtleneck look.
6. Pair with leggings and a jacket for the complete winter look.

Pic 1



Pic 2



Easy Halter Shirt



1. Lay the sock flat, and cut it off above the heel (see Pic 1).
2. Determine which end will be the top of your shirt.
3. If needed, roll the raw edge under and either sew in place or glue in place with hot glue placed intermittently under the raw edge and then pressing it into place.
4. Cut an 18" piece of ribbon.
5. Fold the ribbon in half.
6. Glue the halfway point of the ribbon at the top front of the shirt (see Pic 2).
7. Let cool completely.
8. Slide the shirt on from the feet, and then tie the halter into place.

Pic 1



Pic 2

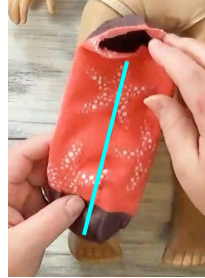




Super Easy Doll Socks

1. Determine that your sock is wide enough to make the doll socks by:
 - a. Pinning the sock in half (see Pic 1).
 - b. Then slide the sock onto one leg.
 - c. While the sock is there, determine where you want your doll sock to end (see Pic 2).
2. Then flip the sock wrong-side out.
3. Cut off right below the heel.
4. Sew FIRST and THEN cut as shown in Pic 3 (yellow is sew and red is cut).
5. Turn the sock tubes right-side out and slide them onto your doll.

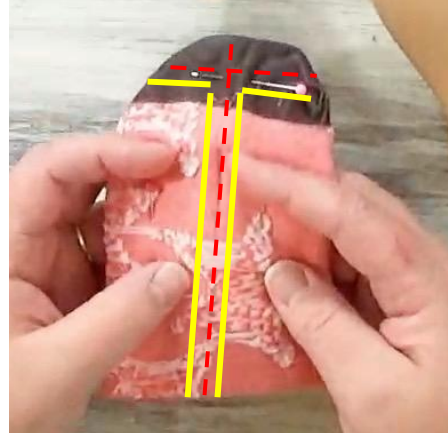
Pic 1



Pic 2



Pic 3



Super Easy Shirt

1. Lay the sock flat and cut above the heel (see Pic 1). Closer to the heel creates a longer shirt.
2. Cut 1" slits on each side near the neck opening (see Pic 2).
3. Slide the shirt onto the doll from her feet, putting the arms into the arm holes once it is at waist level, and then finish sliding the shirt on.

Pic 1



Pic 2

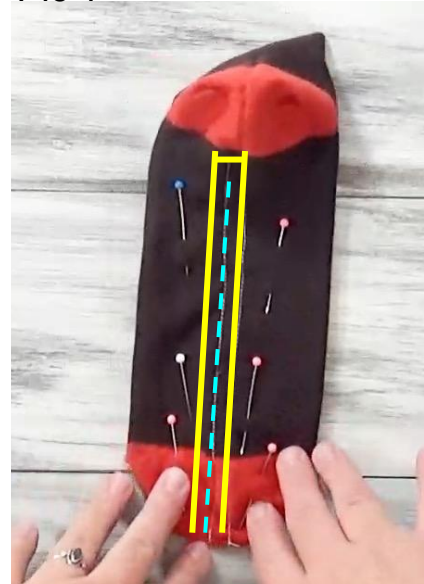


Simple Doll Leggings

1. Determine that your sock is wide enough to make the doll leggings by following the steps on the previous page “Super Easy Doll Socks” steps 1a-1b.
2. Then flip the sock wrong-side out.
3. Cut the top of the sock off 3-4” above the heel.
4. Sew FIRST and THEN cut as shown in Pic 1 (yellow is sew and blue is cut).
5. Turn the sock leggings right-side out and slide them onto your doll, pulling the heel onto the doll’s bottom.



Pic 1



ENJOY THE

DOLL CLOTHES!

Get socks for your projects at

www.funsockcity.com

© 2021 Fun Sock City, Inc.