

# DIY BARBIE CLOTHES



## SUPPLIES:

- SOCKS
- SCISSORS
- NEEDLE & THREAD
- (OR SEWING MACHINE)
- RIBBON/STRING
- MARKING PEN



Get socks for your projects at [www.funsockcity.com](http://www.funsockcity.com)  
© 2021 Fun Sock City, Inc.



# Sleeveless Dress or Maxi Skirt

1. Cut the sock straight across just above the heel.



2. Turn the sock wrong-side out and slide it onto the barbie

3. Pin the sock so that it is fitted to her body, but keeping it fairly loose at her knees. Then slide it off.



4. Sew just inside the pins and then cut off the excess.



5. Turn right-side out and slide onto your barbie either as a dress or a skirt.



# Shirt

1. Cut off the toe of the sock and just the heel section.



2. Turn the sock wrong-side out and slide it onto the barbie with the heel hole toward the front, then bring the skinny section up over her head to her back.



3. Pin the sock so that it is fitted to her body, creating the desired neckline with the skinny strap. Mark where you want the length to end.



4. Sew just inside the pins and then cut off the excess.



5. Turn right-side out and slide onto your barbie starting at her feet.

# Short Skirt (using leftovers from previous shirt)

1. Create straight edges along the top and bottom of the skirt.



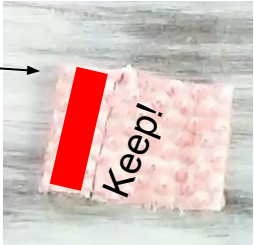
2. Turn the sock wrong-side out and slide it onto the barbie. Make sure that your sock pattern is running the correct direction.

3. Pin the sock so that it is fitted to her body, but keeping it fairly loose at her knees. Then slide it off.



4. Sew just inside the pins and then cut off the excess.

5. Turn right-side out and slide onto your barbie.



# One Shoulder Dress

1. Cut the sock straight across above the heel.



2. Cut a tiny opening along the top of the sock for one arm to go through.



3. Turn the sock wrong-side out and slide it onto the barbie. Make sure that your sock pattern is running the correct direction.



4. Pin the sock so that it is fitted to her body. Then slide it off.



5. Sew just inside the pins and then cut off the excess.

5. Trim the bottom so that it is straight across.



7. Turn right-side out and slide onto your barbie starting at her feet..



# Heel Tie Back Shirt (NO SEW!)

1. Cut the heel plus a strip around the sock as shown below.



2. Slide it onto the barbie with the heel over her chest and the strip on her back. Then cut the strip in the very middle.



3. Tie the strips on her back, and you are finished!

# High-waisted Skirt

1. Cut off just below the heel and also remove the toe of the sock.



2. Turn the sock wrong-side out and slide it onto the barbie. Make sure that your sock pattern is running the correct direction.

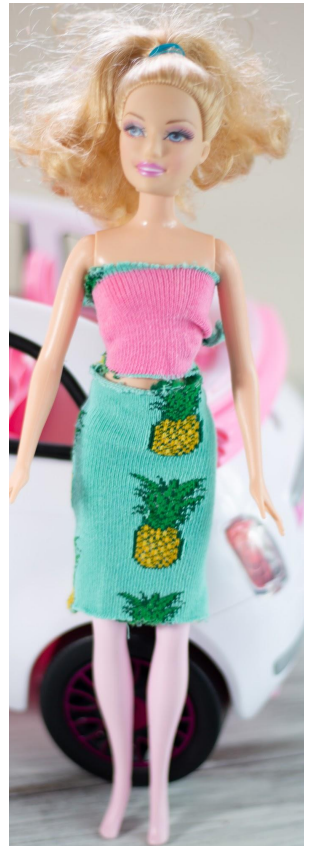
3. Pin the sock so that it is fitted to her body. Then slide it off.



4. Sew just inside the pins and then cut off the excess.



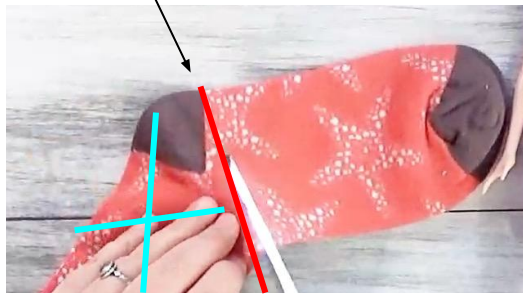
5. Turn right-side out and slide onto your barbie. It goes perfectly with the Heel Tie Back Shirt!





# Shift Dress (NO SEW!)

1. Cut the sock off just below the heel.



2. Lay the barbie on the sock and mark where the neckline will end on each side.



3. Fold the sock in half and cut straight across from one neckline end to the other.



4. Lay the barbie on the sock and mark where the arm openings will be.



5. Cut very tiny holes for the arm openings.

6. Slide the dress onto the barbie. Leave as is, or tie a ribbon around the waist to add shape.



# Rainbow Romper

1. Cut the sock off just above the heel (can be made shorter later).

2. Turn the sock wrong-side out and slide it onto the barbie

3. Pin the sock so that it is fitted to her body, but keeping it fairly loose at her knees. Then slide it off.



Continued on next page...

Get socks for your projects at [www.funsockcity.com](http://www.funsockcity.com)  
© 2021 Fun Sock City, Inc.

# Rainbow Romper Continued

4. Sew just inside the pins and then cut off the excess.



5. Cut tiny arm holes, keeping them more toward the back seam rather than toward the front.

6. Keeping the dress wrong-side out, lay the barbie on it and mark the leg seam.



7. Line up the leg seam with the back seam that is already sewn and pin it into place. This is the perfect time to shorten it if desired.

8. Sew as shown in pink below:

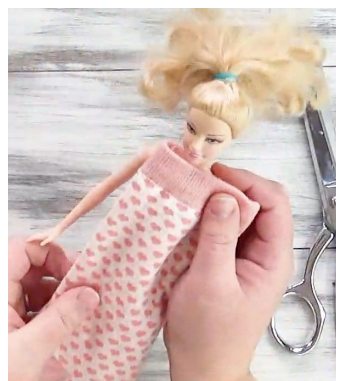


9. After sewing, cut directly on the line you marked between the legs.

10. Turn it right-side out and slide onto the barbie starting at her feet..

# Sweater (shirt/dress/tunic)

1. Cut the sock at the desired length. Remember that we are using the top of the sock to create the neckline



2. Lay the barbie on the sock and mark along the side of her torso and the inside of her arms.



3. Sew directly on the lines you just marked.

4. Cut as shown here:



5. Turn the sweater right-side out and slide onto the barbie starting at her feet.