

COLMI MIX 1

USER MANUAL

Specifications

- Waterproof level: 5ATM
- LCD panel size: 1.5 inch, FSTN
- Operating environment: iOS 8.2+ and Android 4.3+, bluetooth 4.0
- Place of manufacture: China
 - ※ New outer box may be damaged during transportation.
- Include: Smart watch * 1
User manual * 1

※ Please read the user manual carefully before use.

Specifications

Hardware configuration

Chipset	nRF51802
Bluetooth:	BT4.0
Display:	FSTN
Light:	EL Cold light panel
Sound:	Ceramic buzzing
3D Sensor:	KXTJ3- 1057
Battery:	CR2430
Quartz movement:	AL35E
Quartz battery:	SR626SW

Performs

BT distance:	10m (Open space)
Data storage:	7 days on watch, Long- term on APP
Waterproof level:	5ATM
Button life:	100K times
Quartz standby:	3 years

Electrical parameter







Operating voltage:	3.0V (Reminder on 2.6V)
BT current:	0.1mA
Step counting current:	0.05mA
Sound current:	5mA (Buzzer)
Luminous current:	<10mA
Standby current:	13uA (All function turned off)
Buzzer sound:	40- 50dB
Luminous brightness:	8.0LM
RF band:	2402- 2480MHz

Material process

Watch case:	Zinc alloy
Watch glass:	Mineral glass
Buttons:	Stainless steel
Strap:	TPU
Strap buckle:	Stainless steel
Bottom cover:	Stainless steel
Watch case size:	Φ44.0 x 15.0mm
Strap size:	24.0mm (strap width)
Suitable:	150- 205mm (wrist perimeter)
Unit weight:	86.0g






Display and status icon

Display icon

-  BT on / off icon
-  Power percentage display
-  Alarm status icon
-  Steps icon
-  Kcal icon
-  Km(distance) icon

Function icon

"08-25" Today's date

-  Sport data
-  Alarm setting
-  Stopwatch function
-  Drinking reminder
-  Sedentary reminder
-  Remote camera
-  Incoming call reminder
-  Information reminder SMS, QQ, WeChat, Twitter, Facebook, Whatsapp, Skype.



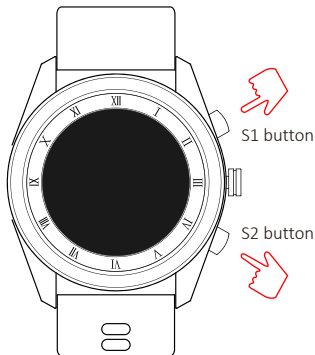
Power on / off

Power on

When the watch is switched off, long press S1 and S2 buttons until "ON" shows in the center of dial, then the watch will be switched on.


Power off

On any mode (or dial interface), long press S1 and S2 buttons (for about 3 seconds) until "OFF" shows in the center of dial, then the watch will be switched off.




BT on / off

BT on / off status

If the BT icon  shows on the watch dial, it means the watch BT is turned on; If the icon does not show, then it means watch BT is turned off.

BT on / off operation

On any mode (or interface), long press S1 button for about 8 seconds until the BT icon  shows and flickers on dial, which means BT has been turned on; Then if long press S1 button (for about 8 seconds) until BT icon disappears, which means BT has been turned off.

(If BT is not connected successfully within 15 minutes, the watch will tured off BT automatically)



APP download and install

In order to better use the smart functions of this watch. You need to install APP on your smartphone. iPhone system needs to be IOS 8.2 or above, Android mobile system needs to be Android 4.3 or above.

QR scanning installation

This APP supports Apple mobile phone or Android mobile phone, please scanning the following QR to download and install APP.

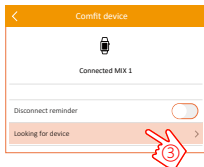
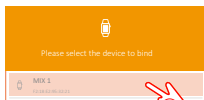
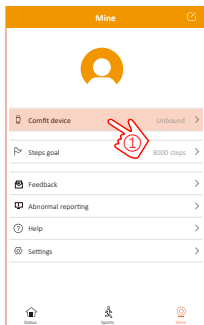


Search and install

iPhone: search and install "Comfit" on App Store.
Android phone: search and install "Comfit" on Google play. Android (China): search and install "Comfit" on App Store.

APP binding watch

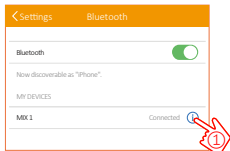
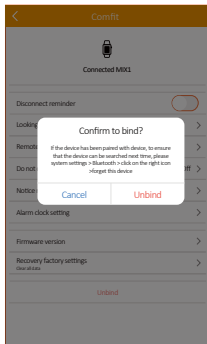
1. Access to the APP, register your user account.
2. Turn on the watch and BT, and take it close to your mobile phone.
3. Access to the APP footer menu "Mine" and click "Comfit device" ①; wait for the mobile phone: Search for "MIX 1" and click ② to start BT connection.
4. After the successful connection, the app automatically enters the "Comfit device" interface; click "Looking for device" ③, the watch will make a notification tone "Di di" to verify the success of the watch and the mobile phone binding.



APP unbind watch

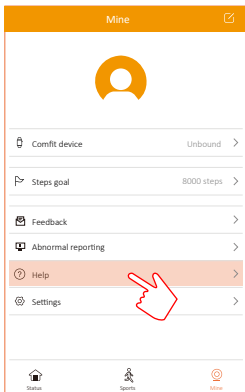
Disconnect the watch connection at APP "Mine- Comfit device- Unbind".

If the iPhone is already paired with the device, in order to ensure that the device can be searched for next time, in addition to "Unbind", you need to operate "Forget this device" in the phone "system settings- Bluetooth- click on the right icon ①".



More operation instructions

In order to update the instructions in time, we arranged "more operation instructions" in the menu of APP. For further understanding of product operation, please go to "Mine- Help" of APP. (Note: Before reading "Help", the watch and mobile APP must be bound first).



Product quality assurance manual

Warranty and after-sales service

Warranty period: within 12 months from the date of purchase.

Free repair:

During the warranty period, you can repair product failures free of charge by showing receipts and quality assurance statements and contacting the store where you purchased the product. The customer will be responsible for the freight at the time of return.

Otherwise, the following reasons do not meet the requirements for free repair:

1. Product damage caused by customer's own disassembly.
2. The product is damaged due to the influence of immutable factors.
3. Water and other liquid damage to COLMI smart watch.