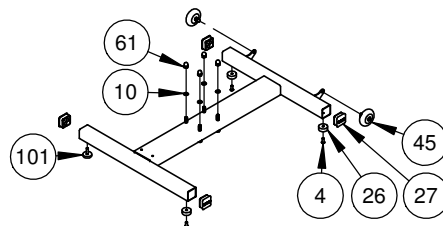
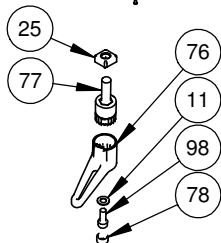


| | | | | | | | |
|----------------------------|---------------------|-----------------|----------------|-----------------|------------------|---------------------------|----------------|
| SHEET 1 OF 3 | REV A | ECO 3325 | MODEL #: | S5506XXC | TITLE: | M3i - INDOOR CYCLE | |
| FROM SERIAL NUMBER: | 140527-84571 | TO: | PRESENT | DATE FROM: | 5/27/2014 | TO: | PRESENT |

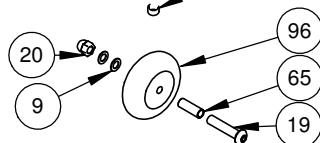
- 39 INCLUDES ITEMS: 4 10 26 27
45 61 101



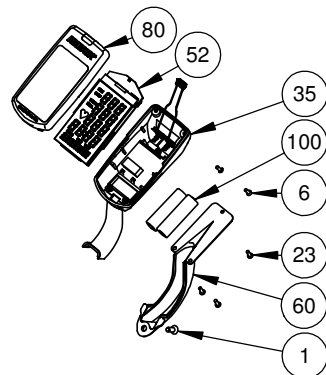
- 40 INCLUDES ITEMS: 11 25 76 77
78 98



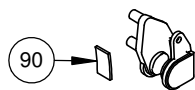
- 45 INCLUDES ITEMS: 9 19 20 65 96



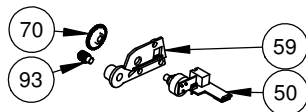
- 46 INCLUDES ITEMS: 1 6 23 35
52 60 80 100



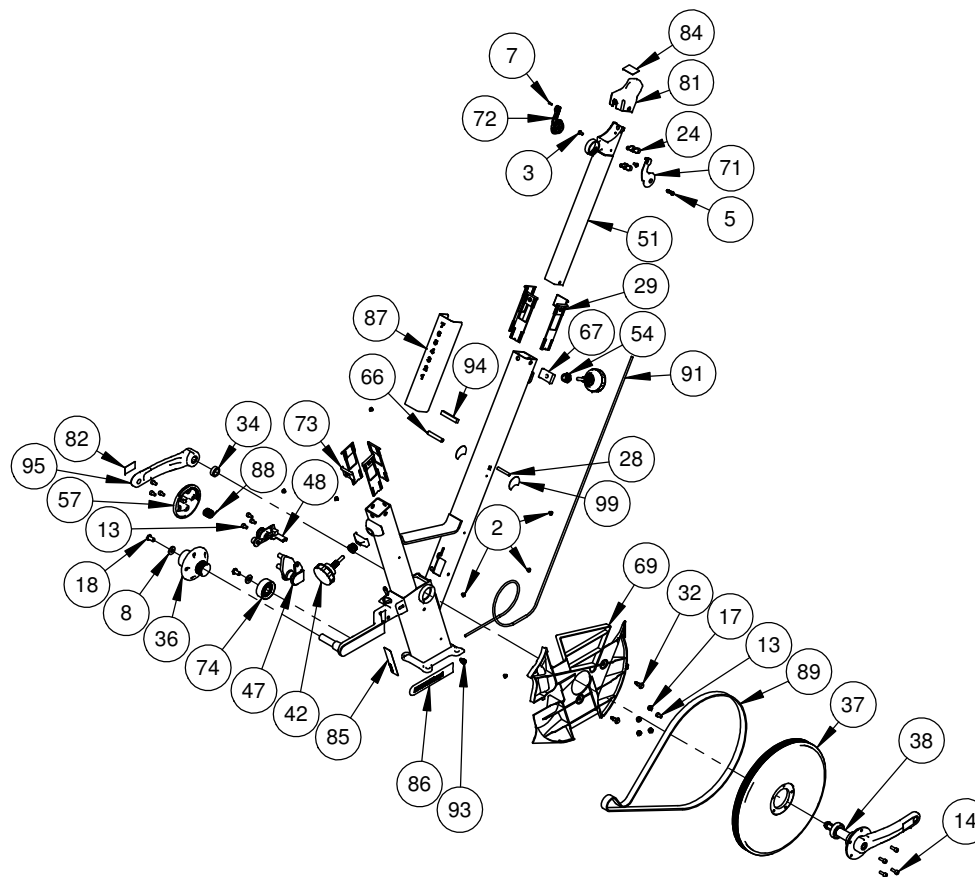
- 47 INCLUDES ITEM: 90



- 48 INCLUDES ITEMS: 50 59 70 93



- 49 INCLUDES ITEMS: 2 3 5 7 8 13 14 17 18 24
28 29 32 34 36 37 38 42 47 48
51 54 57 66 67 69 71 72 73 74
81 82 84 85 86 87 88 89 91 93
94 95 99



| ITEM NO. | QTY. | PART NO. | TITLE | ITEM NO. | QTY. | PART NO. | TITLE | ITEM NO. | QTY. | PART NO. | TITLE |
|----------|------|----------|--------------------------------------|----------|------|-----------|----------------------------------|----------|------|----------|-----------------------------------|
| 1 | 1 | 9062 | SCREW - CRFCHMS 10-32 X 1/2 SS | 45 | 2 | 550852 | SA-WHEEL-TRANSPORT | 89 | 1 | 555406 | BELT - POLY V |
| 2 | 7 | 9253 | SCREW - CRPHMS #10-32 X 3/16 SS | 46 | 1 | 550853X | SA - DISPLAY-COMPUTER | 90 | 1 | 555410 | PAD - BRAKE-FRICTION |
| 3 | 2 | 9261 | SCREW - CRPHMS 10-32 X 3/8 SS | 47 | 1 | 550868 | SA - MAGNET HOLDER | 91 | 1 | 555411 | SHIFT CABLE |
| 4 | 3 | 9279 | SCREW - SBHTS-TF 5/16-18 X 3/4 ZP | 48 | 1 | 550869 | SA - CIRCUIT BOARD-PICKUP-MXi | 92 | 1 | 555413 | CORD - COMP TO PICKUP |
| 5 | 1 | 9287 | SCREW - CRPHTS 10-24 X 3/4 SS | 49 | 1 | 550870XXC | SA-MAIN FRAME-FTB-XXC-MXi | 93 | 2 | 555419 | SCREW - HSPSS-M10x1.5 X 16 BLK |
| 6 | 3 | 9303 | SCREW - CRPHTCS-T25 4 X 3/8 SS | 50 | 1 | 550911 | CKT BRD - PICKUP | 94 | 1 | 555420 | SWEAT STRIP - 5/16 X 3/8 |
| 7 | 1 | 9304 | SCREW - CRFCS-PLASTITE 4-20 X 3/8 SS | 51 | 1 | 550922 | SLIDE MT - TUBE | 95 | 1 | 555421 | CRANK ARM - L |
| 8 | 2 | 9344 | WASHER - FW-USS 5/16 ZP | 52 | 1 | 550929 | CKT BRD-COMPUTER-BL-BT | 96 | 2 | 555446 | WHEEL - 3 IN-W/BUSHING |
| 9 | 4 | 9369 | WASHER - ACFT 5/16 SS | 53 | 1 | 553101 | TUBE - WHEEL GUARD-270 | 97 | 1 | 555457 | SADDLE - M3X |
| 10 | 4 | 9384 | WASHER - FW-ACFT 7/16 SS | 54 | 2 | 554997 | THREADED INSERT - 3/4 X 1/2 SS | 98 | 2 | 555459 | SCREW - SHCS M6x1 X 16 SS-PATCHED |
| 11 | 2 | 9391 | WASHER - FW-ACFT 1/4 SS | 55 | 1 | 555003 | FLYWHEEL | 99 | 2 | 565407 | COVER-SQ PIN HOLE |
| 12 | 2 | 9397 | WASHER - BONDED 5/16 SS | 56 | 1 | 555005 | HUBCAP - FLYWHEEL | 100 | 2 | 966502 | BATTERY - AA CELL |
| 13 | 7 | 9500 | SCREW - SHCS M6x1 X 10 SS | 57 | 1 | 555008 | MAGNET COVER | 101 | 1 | 995420 | BUMPER - MOLDED GLIDE-W-SCREW |
| 14 | 4 | 9501 | SCREW - SHCS M6x1 X 16 SS | 58 | 1 | 555009 | SLIDER - SEAT | | | | |
| 15 | 5 | 9502 | SCREW - SHCS M6x1 X 20 SS | 59 | 1 | 555011 | PLATE - MAGNET SUPPORT | | | | |
| 16 | 1 | 9508 | NUT - HN M6X1 SS | 60 | 1 | 555017 | MOUNT - DISPLAY-COMPUTER | | | | |
| 17 | 4 | 9509 | NUT - HELN M6X1 ZP | 61 | 4 | 555022 | NUT - HAN-HC-7/16-20 SS | | | | |
| 18 | 2 | 9511 | SCREW - HHCS M8X1.25 X 16 ZP | 62 | 2 | 555025 | CLAMP - WHEEL GUARD | | | | |
| 19 | 2 | 9516 | SCREW - SBHCS M8x1.25 X 45 SS | 63 | 1 | 555026 | BOTTOM SLIDE - HANDLEBAR ADJ | | | | |
| 20 | 2 | 9519 | NUT-HAN-HC M8x1.25 SS | 64 | 1 | 555031 | SPACER - HANDLEBAR ADJ | | | | |
| 21 | 2 | 9524 | SCREW - SBHCS M8x1.25 X 16 SS | 65 | 2 | 555037 | SPACER - 032039114 | | | | |
| 22 | 1 | 9525 | SCREW - HHCS M6X1 X 45 SS | 66 | 1 | 555039 | PIN - MF-5/16 SQ X 2 1/8 | | | | |
| 23 | 3 | 9532 | SCREW-CRPHMS 4-40 X 3/8 SS | 67 | 2 | 555048 | PLATE - FRICTION W/HOLE | | | | |
| 24 | 4 | 9536 | SCREW - SHCS M8x1.25 X 16 SS | 68 | 1 | 555051 | COVER - BELT-MAIN | | | | |
| 25 | 1 | 9982 | NUT-HEAVY SQ. 3/8-16 SS | 69 | 1 | 555052 | COVER - BELT-INNER | | | | |
| 26 | 3 | 105423 | BUMPER - MOLDED GLIDE | 70 | 1 | 555053 | GEAR - POT | | | | |
| 27 | 4 | 115054 | PLUG - 2 IN SQ-KEISER | 71 | 1 | 555054 | SHIFTER - R | | | | |
| 28 | 1 | 505063 | PIN - HANDLEBAR-1/4 X 1-3/4 | 72 | 1 | 555055 | SHIFTER - L | | | | |
| 29 | 6 | 505068 | BUSHING - 4 PIECE | 73 | 2 | 555058 | BUSHING - SHORT | | | | |
| 30 | 2 | 505173 | STRAP - PEDAL | 74 | 1 | 555066 | PULLEY - IDLER-MOLDED | | | | |
| 31 | 1 | 505444 | TOE CLIP & STRAP SET ASSY | 75 | 1 | 555073 | CAP - WHEEL GUARD-BOT | | | | |
| 32 | 2 | 505480 | RIVET - 1/4 X 3/4 REM PLUG | 76 | 2 | 555074 | HANDLE - L-BLACK | | | | |
| 33 | 1 | 540831 | PEDAL SET - COMBO | 77 | 2 | 555075 | HANDLE - STUD-BLACK | | | | |
| 34 | 1 | 543091 | HOSE - SPACER-LONG | 78 | 2 | 555076 | CAP - M6 SHCS-BLACK | | | | |
| 35 | 1 | 550802 | BACK - DISPLAY-COMPUTER | 79 | 1 | 555078 | GUARD - SWEAT-HANDLEBAR-SHORT | | | | |
| 36 | 1 | 550808 | SA - HUB-FLYWHEEL | 80 | 1 | 555079 | FACE - DISPLAY-COMPUTER-BL | | | | |
| 37 | 1 | 550811 | SA - PULLEY-330MM DIA | 81 | 1 | 555080 | COVER - DISPLAY MT | | | | |
| 38 | 1 | 550813X | SA - CRANK ARM-R AXLE SET | 82 | 1 | 555371 | DECAL - CAUTION-PEDAL TORQUE | | | | |
| 39 | 1 | 550814 | SA - FRAME-BASE | 83 | 1 | 555375 | DECAL - CAUTION-HANDLEBAR & SEAT | | | | |
| 40 | 1 | 550828 | SA - HANDLE-L | 84 | 1 | 555376 | DECAL - WARNING-HEART RATE | | | | |
| 41 | 1 | 550844 | SA - HANDLEBAR-NEUTRAL-FTB | 85 | 1 | 555381 | DECAL - SERIAL NUMBER - M3 | | | | |
| 42 | 2 | 550847 | PLUNGER KNOB | 86 | 1 | 555385 | DECAL - DOME-KEISER M3I | | | | |
| 43 | 1 | 550850 | SA - SEATPOST | 87 | 1 | 555386 | DECAL - HANDLEBAR-POSITION-BLK | | | | |
| 44 | 1 | 550851X | SA-COVER-LOWER-MF | 88 | 1 | 555405 | SPRING - TORSION | | | | |

| | | | | |
|---|--------------------|-----------------------------|-------------------------|----------------------------------|
| SHEET 3 OF 3 | REV A | ECO 3325 | MODEL #: 5506XXC | TITLE: M3i - INDOOR CYCLE |
| FROM SERIAL NUMBER: 140527-84571 | TO: PRESENT | DATE FROM: 5/27/2014 | TO: PRESENT | |

PRINTED ON: 1/5/2015

X:\drawings_REVISION55_EC_RWD_BIKE