

# PRECOR®

PREMIUM HOME FITNESS EQUIPMENT



# CONTENTS

<b>Consoles and Networked Fitness</b>	3
Console Options	4
Home Console Overview	5
Commercial Console Overview	6
Networked Fitness: Tap Into the Future	7
Networked Fitness: Tools to Enhance Your Workout	8
Networked Fitness: Technology to Maximize Your Workout	9
<b>Cardio Equipment</b>	10
<b>Treadmills</b>	14
Premium Home 200 and 400 Line	14
Professional 600, 700, and 800 Line	15-17
<b>Elliptical Fitness Crosstrainers™ (EFX)</b>	18
Premium Home 200 and 400 Line	18
Professional 600, 700, and 800 Line	19-20
<b>Adaptive Motion Trainers® AMT®</b>	21
<b>Recumbent Bikes</b>	22
<b>Upright Bikes</b>	23
<b>Spinning® Indoor Bikes</b>	24
<b>Core and Stretching</b>	25-26
<b>Strength</b>	27-30
<b>Home Warranty</b>	31

# CONSOLES AND NETWORKED FITNESS



# CONSOLE OPTIONS

Precor consoles feature innovative and reliable cardio equipment with consoles backed by tens of thousands of hours of testing to ensure proven performance that exercisers can count on. The “heads up” positioning of all the consoles encourages proper bio mechanics and posture during the workout.

## HOME CONSOLE OPTIONS FOR THE PRECISION™ AND ENERGY™ SERIES



### R40 Console

The most advanced home console, the ultra-customizable and personalized R40 console offers essential features designed to maximize exerciser performance. Available on the 200 and 400 Lines.



### R20 Console

The sleek and sophisticated R20 console complements the 200 and 400 Lines. It features high-contrast, blue-white LCD display and durable dome keys for easy adjustments.



### R10 Console

The R10 console includes basic and easy to navigate features. Available exclusively on TRM 211 treadmill.

## COMMERCIAL CONSOLE OPTIONS FOR EXPERIENCE™ SERIES



### P82 Console

The P82, available on the Experience Series 600, 700, and 800 Lines, is a 15-in (38.1 cm) capacitive touch screen console that seamlessly combines a fitness, television, and Internet experience into one simple design.



### P62 Console

The P62, available on the Experience Series 600, 700, and 800 Lines, is a 10-in (25.7 cm) capacitive touch screen console that injects contemporary design and a premium networked fitness experience.



### P30i Console

Designed for interval training with one-touch and incline speed keys. Available exclusively on the TRM 731i Treadmill.



### P31 Console

Available on the 700 and 800 lines of cardio, the P31 console features a large LCD display, motion controls, and easy to navigate workout options,



### P30 Console

The P30 console, available on the Experience Series 600 Lines, features a large LED display and motion controls.

# Home Console Overview

R10 Console



R20 Console



R40 Console



Cardio Equipment Line	211 Treadmill	200 and 400 Lines	200 and 400 Lines
Display Type	Blue/White LCD	5" High Contrast LCD	7" Color LCD Capacitive Touch Screen
Touch Screen	-	-	■
Machine Controls	Membrane Switch Keys	Tap-Style Dome Keys	Motion Controls
Numeric Key Pad	-	-	-
Electronic Readouts	Minimum	Standard	Advanced
Units Selection (Metric and U.S. Standard)	■	■	■
Mobile Device Charger	-	■	■
Languages	English	English	English
Tablet Holder with Smart Grip™	-	■	■
<b>Personalization</b>			
Number of User IDs	-	-	4
Custom workouts per user	-	-	4
Suggested Workout	-	-	■

■ Standard   - Not offered

# Professional Console Overview

P30 Console



P31 Console



P30i Console



P62 Console



P82 Console



Cardio Equipment Line	<b>600 Line</b>	<b>700 and 800 Lines</b>	<b>731i Treadmill</b>	<b>600, 700 and 800 Lines</b>	<b>600, 700 and 800 Lines</b>
Display Type	Advanced LED Display	Advanced LED Display	Advanced LED Display	10" LCD Capacitive Touch Screen	15" LCD Capacitive Touch Screen
Preva® Operating System	-	-	-	■	■
Touch Screen	-	-	-	■	■
Machine Controls	Motion Controls	Motion Controls	Motion Controls	Motion Controls	Motion Controls
Numeric Key Pad	■	■	■	Touch Screen	Touch Screen
Electronic Readouts	Advanced	Advanced	Advanced	Advanced	Advanced
Units Selection (Metric and U.S. Standard)	■	■	■	■	■
Mobile Device Charger	■	■	-	■	■
Languages	English, Dutch, French, German, Italian, Japanese, Portuguese, Russian, Spanish	English, Dutch, French, German, Italian, Japanese, Portuguese, Russian, Spanish	English	English, Chinese, Danish, Dutch, French, Finnish, German, Italian, Japanese, Korean, Norwegian, Polish, Portuguese, Russian, Spanish, Swedish, Traditional Chinese, Turkish	English, Chinese, Danish, Dutch, French, Finnish, German, Italian, Japanese, Korean, Norwegian, Polish, Portuguese, Russian, Spanish, Swedish, Traditional Chinese, Turkish
<b>Network Capabilities</b>					
WiFi	-	-	-	802.11 a/b/g/n, 2.4 GHz MIMO and 5 GHz multiple antenna operation	802.11 a/b/g/n, 2.4 GHz MIMO and 5 GHz multiple antenna operation
Ethernet	-	-	-	10/100/1000 Base-T	10/100/1000 Base-T
RFID	-	-	-	ISO/IEC 14443A MIFARE	ISO/IEC 14443A MIFARE
<b>Options</b>					
Reading Rack	■	■	■	■	■
Personal Viewing System	Optional	Optional	Optional	Embedded	Embedded
Media Adapter	-	-	-	Optional	Optional
Connects to Apple Watch	-	-	-	-	Optional via Smart Watch Connector

■ Standard - Not offered

# NETWORKED FITNESS: TAP INTO THE FUTURE

Maximize your home fitness experience with Experience Series consoles from Precor. From first glance to deeper inspection, the P82 and P62 consoles make quite an impression. With a brilliant touch screen and a simple, intuitive interface, they will draw exercisers deeper into their workout.

The clean and proven design of these consoles makes it easy for exercisers to locate controls, inputs, and adjustments.

The Preva® operating system, available exclusively on the P82 and P62 consoles, and in operation across 100 countries and 11,000 networked sites globally, allows exercisers to display workout metrics and entertainment simultaneously.



## Capacitive Touch Screen

Control your workout via screen gestures on a robust, responsive, and intuitive industrial-grade capacitive touch screen.



## Mobile Device Charger

Experience Series consoles all feature a mobile device charger for electronic book readers, small MP3 players, and mobile phones.



## Motion Controls

Large and responsive controls are independent of the touch screen, enabling you to alter the motion and the resistance of your workout with ease.



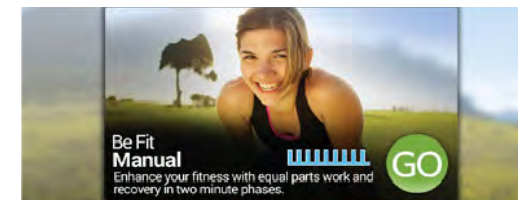
## Reading Rack

Sturdy enough for books, magazines, tablets, and e-book readers, the rack has a hole to feed charging cables through to the mobile device charger.



## Heads-up Viewing Angle

The upright screen position encourages proper biomechanics and posture while working out.



## Featured Workout

You're encouraged to try more variety in your workouts, as the touch screen consoles promote new workouts on a daily basis.

# NETWORKED FITNESS: TOOLS TO ENHANCE YOUR WORKOUT



## Automatic Software Updates

All networked Precor touch screen consoles receive automatic software updates, refreshed content, and new features—at no expense, and without any action required.



## Manage Apps

Control entertainment and media apps with a simple click.



## Bluetooth® Headphones

Quickly and easily pair your Bluetooth® headphones to your cardio console to enjoy tether-free audio.



## Video On Demand

A hand-curated selection of music, sports, and entertainment video play lists designed for the moving environment. Play lists refresh weekly with popular content selected from YouTube®.



## My Profile

Easily manage your logins and passwords through a feature on the touch screen console called My Profile.





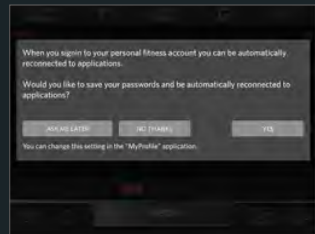
# NETWORKED FITNESS: TECHNOLOGY TO MAXIMIZE YOUR WORKOUT

Technology has changed the world and continues to do so, especially in the delivery of entertainment and information. Investing in a fully connected experience will give you powerful tools for creating an engaging fitness environment at home. With the Preva operating system, you can personalize your cardio experience to instantly access the apps, entertainment, and information you want. Whether its interactive workouts, popular music, or pro tips, content is always kept fresh to increase engagement.



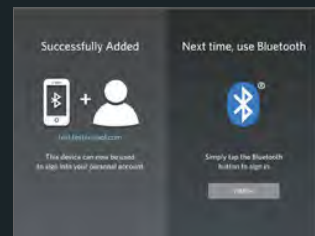
## Preva® Personal Accounts

With a Preva personal account, you can set and track weekly workout goals, receive fun achievement badges, save favorite workouts to do another time, and control the layout of their apps and entertainment so your favorites come first.



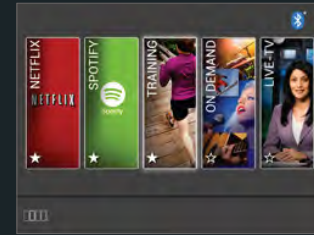
## Single Sign-On

Simply enter your account logins and password for personal audio and video entertainment accounts, you won't have to do so again during future workouts. A single sign-on to start your workout is all you need.



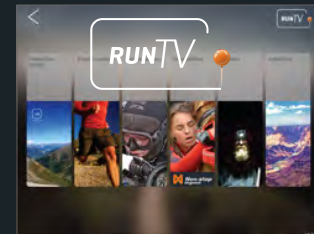
## Bluetooth® Sign-in

Use mobile phone to sign into your Preva personal account on the Precor touch screen console.



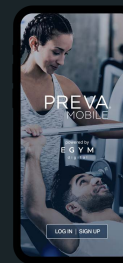
## Media & Entertainment Apps

Access personal audio and video entertainment apps, like Netflix®, Hulu®, Watch ESPN®, and Spotify® through the Precor touch screen consoles. Workout finishes before the movie does? You can pick up right where you left off on your next workout or from any other personal device.



## RunTV

Channels offer motivating, human-powered stories, training tips from fitness experts, and stunning interactive trails that sync with the cardio lower for challenging, interactive runs, rides, and climbs in some of the world's most iconic locations.



## Preva Mobile App

Your springboard to stronger engagement. Helps keep you motivated with challenges and goal setting. Integrates with popular fitness apps, including Garmin®, Strava®, Polar®, Fitbit®, MyZone®, Apple®, and more. Download via App Store or Google Play.

# CARDIO EQUIPMENT



# OPTIONS TO MEET YOUR NEEDS

Whether you are a beginner, an elite competitor, or somewhere in between, Precor creates exceptional equipment for all athletes. Bring home our club-quality equipment. As a home buyer, you want the brand you see and use in your fitness facility. You know how they work, like the feel of them, and want to see the same results in your home gym. Precor allows you to bring club-quality equipment home.

## Energy™ Series 200 Line

This Line is ideal for the everyday exercisers looking for outstanding durability and uncompromising quality. Both our treadmills and ellipticals in this Series are packed with desirable and exclusive features to enhance your workout experience and ensure peak performance, year after year.

- Treadmills feature Energy Stride™ Technology that reduces stress on joints by giving areas of the deck optimal underfoot cushioning for comfort throughout your workout.
- Ellipticals feature moving or fixed arms options, manual or motorized CrossRamp® from a 15 to 25 degree angle, and 16 resistance levels.



## Precision™ Series 400 Line

Built to go the distance for your fitness lifestyle. Featuring commercial-worthy treadmills and ellipticals personalized for home exercisers, with design and features favored by fitness centers, universities, and hotels across the globe. Patented technology uses your preferences and exercise data to deliver a personalized workout experience that promotes better results and saves you time.

- Treadmills feature Integrated Footplant Technology™ (IFT) and Ground Effects® Impact Control System for both vertical and horizontal impact control to reduce stress on the body and to give you the ideal amount of cushioning for your every step, plus you have the ability to run or walk, both up and down hill.
- Ellipticals feature a motorized CrossRamp® or incline up to 40 degree angle that allows you adjust the shape of the elliptical path and target specific muscles, and 20 resistance levels.



# BRING HOME WHAT THE PROS CHOOSE

We've all had our favorite piece of cardio that we use at our local fitness facility. You know, the machine you head to as soon as you walk in the door. Whether it's in just the right location, or just feels 'right,' you're protective of it and - although you would never admit it - you're annoyed when someone else is on it. It's okay you're not the only one. With Precor you can bring home your favorite club-tested, member-approved treadmill, elliptical, AMT®, or bike that you know and love. That way you won't have to fight anyone for your favorite machine, except maybe your family members.

## Experience™ Series 600 Line

Bring home the cardio line that is designed for light-use facilities, such as corporate wellness, personal training studios, multi-family complexes, and physical therapy centers, looking for all the essentials, including an optimal balance between durability, reliability, and innovation. The 600 Line includes treadmills, ellipticals, recumbent and upright bikes.



## Experience™ Series 700 Line

Featured in fitness centers around the globe, the 700 Line includes the reliability, performance, and efficiency that Precor is known for with slightly dialed back features from our premium 800 Line. This Line includes treadmills, ellipticals, and Adaptive Motion Trainers® with Fixed Stride.



## Experience™ Series 800 Line

Meet the most well-appointed professional cardio equipment that Precor offers, with a reputation for reliable performance, ease of care, and service. This Line is what the pros install in their high-end fitness centers, YMCAs, top-notch universities, and 5-star resorts across the world. It has everything you are looking for your home. This Line includes treadmills, ellipticals, our unique Adaptive Motion Trainer® with Open Stride™, recumbent, and upright bikes.



# EXPERIENCE™ SERIES CARDIO COLOR OPTIONS

Color options are available across the 800, 700, and 600 Lines.

Frame Color  
Black Pearl

Cover Color  
Tungsten



Frame Color  
Gloss Metallic Silver

Cover Color  
Tungsten



# Energy™ and Precision™ Series Premium Home Treadmills 200 and 400 Line



MSRP	\$2,499	\$2,999	\$3,499	\$4,999	\$5,499
<b>Console</b>					
Console Type	R10 Blue/White LCD	R20 5" High Contrast LCD	R40 7" LCD Capacitive Touch Screen	R20 5" high contrast LCD	R40 7" LCD Capacitive Touch Screen
<b>Features</b>					
Frame/Plastic Color	Silver/Blue Gray	Silver/Blue Gray	Silver/Blue Gray	Silver/Black	Silver/Black
Shock Absorption (Vertical)	Energy Stride™	Energy Stride™	Energy Stride™	Ground Effects® Impact Control System	Ground Effects® Impact Control System
Stride Support (Horizontal)	-	-	-	Integrated Footplant Technology™	Integrated Footplant Technology™
Speed Range	0.5 - 12 mph 0.8 - 19.2 kph	0.5 - 12 mph 0.8 - 19.2 kph	0.5 - 12 mph 0.8 - 19.2 kph	0.5 - 12 mph 0.8 - 19.2 kph	0.5 - 12 mph 0.8 - 19.2 kph
Elevation Range	0% - 15% Incline	0% - 15% Incline	0% - 15% Incline	2% Decline - 15% Incline	2% Decline - 15% Incline
Step-Up Height	7.5 in / 19 cm	7.5 in / 19 cm	7.5 in / 19 cm	7.5 in / 19 cm	7.5 in / 19 cm
Running Platform Width	20 in / 51 cm	20 in / 51 cm	20 in / 51 cm	22 in / 56 cm	22 in / 56 cm
Handlebars	Short Length	Full Length	Full Length	Premium Full Length	Premium Full Length
Entertainment Options	-	-	-	-	-
User IDs	0	2	4	2	4
Custom Workouts per User ID	-	0	4	0	4
In-Workout Feedback Metrics	9	13	27	13	27
Pre-Programmed Workouts	6	9	39 (23 preset, 16 custom)	9	39 (23 preset, 16 custom)
Recommended Maximum User Weight*	Tested up to 300 lbs / 136 kg	Tested up to 300 lbs / 136 kg	Tested up to 300 lbs / 136 kg	Tested up to 350 lbs / 159 kg	Tested up to 350 lbs / 159 kg
Dimensions (LxWxH)	81 x 32 x 54 in 206 x 80 x 137 cm	81 x 33 x 59 in 206 x 82 x 150 cm	81 x 33 x 59 in 206 x 82 x 150 cm	79 x 34 x 59.5 in 204 x 86 x 151 cm	79 x 34 x 59.5 in 204 x 86 x 151 cm
Product Weight	227 lb / 103 kg	238 lb / 108 kg	238 lb / 108 kg	358 lb / 163 kg	358 lb / 163 kg
Power Requirements	120V, 60Hz; Dedicated 15A circuit	120V, 60Hz; Dedicated 15A circuit	120V, 60Hz; Dedicated 15A circuit	120V, 60Hz; Dedicated 15A circuit	120V, 60Hz; Dedicated 15A circuit
<b>Home Warranty**</b>	5-year parts and wear items 3-year console 1-year labor	5-year parts and wear items 3-year console 1-year labor	5-year parts and wear items 3-year console 1-year labor	10-year parts and wear items 3-year console 1-year labor	10-year parts and wear items 3-year console 1-year labor

■ Standard - Not offered

\* Precor does not deny warranty claims based on user weight. Weight limits reported are recommended for best performance based on internal testing.  
\*\* These Precor warranties are based on in-home usage and are not warranted for commercial settings.

# Experience™ Series Professional Treadmills 600 Line



MSRP	\$5,495	\$7,595	\$8,595
<b>Console</b>			
Console Type	P30 Advanced LED display	P62 10" LCD Capacitive Touch Screen	P82 15" LCD Capacitive Touch Screen
<b>Features</b>			
Frame Color Options	Black or Silver	Black or Silver	Black or Silver
Shock Absorption (Vertical)	Ground Effects® Impact Control System	Ground Effects® Impact Control System	Ground Effects® Impact Control System
Stride Support (Horizontal)	Integrated Footplant Technology™	Integrated Footplant Technology™	Integrated Footplant Technology™
Speed Range	0.5 - 12 mph 0.8 - 19.2 kph	0.5 - 12 mph 0.8 - 19.2 kph	0.5 - 12 mph 0.8 - 19.2 kph
Elevation Range	0% - 15% Incline	0% - 15% Incline	0% - 15% Incline
Step-Up Height	8.4 in / 21.3 cm	8.4 in / 21.3 cm	8.4 in / 21.3 cm
Running Platform Width	22 in / 56 cm	22 in / 56 cm	22 in / 56 cm
Handlebars	Premium Full Length 18 in / 46 cm	Premium Full Length 18 in / 46 cm	Premium Full Length 18 in / 46 cm
Entertainment Options	-	Embedded	Embedded
User IDs	-	Unlimited with Preva®	Unlimited with Preva®
Custom Workouts per User ID	-	Unlimited with Preva®	Unlimited with Preva®
In-Workout Feedback Metrics	20	20	20
Pre-Programmed Workouts	27	27	27
Recommended Maximum User Weight*	Tested up to 350 lbs / 159 kg	Tested up to 350 lbs / 159 kg	Tested up to 350 lbs / 159 kg
Dimensions (LxWxH)	83 x 35 x 62 in 211 x 89 x 157.5 cm	83 x 35 x 68.5 in 211 x 89 x 174 cm	83 x 35 x 68.5 in 211 x 89 x 174 cm
Product Weight	325 lb / 147 kg	329 lb / 149 kg	332 lb / 151 kg
Power Requirements	120V, Dedicated 20A circuit with 5-20R NEMA receptacle	120V, Dedicated 20A circuit with 5-20R NEMA receptacle	120V, Dedicated 20A circuit with 5-20R NEMA receptacle
<b>Home Warranty**</b>			
	10-year parts and wear items 3-year console 1-year labor	10-year parts and wear items 3-year console 1-year labor	10-year parts and wear items 3-year console 1-year labor

■ Standard - Not offered

\* Precor does not deny warranty claims based on user weight. Weight limits reported are recommended for best performance based on internal testing.

\*\* These Precor warranties are based on in-home usage and are not warranted for commercial settings.

# Experience™ Series Professional Treadmills 700 Line



MSRP	\$7,545	\$7,645	\$9,895	\$10,895
<b>Console</b>				
Console Type	P31 Advanced LED display	P30i Interval display with One-Touch Speed & Incline keys	P62 10" LCD Capacitive Touch Screen	P82 15" LCD Capacitive Touch Screen
<b>Features</b>				
Frame Color Options	Black or Silver	Black or Silver	Black or Silver	Black or Silver
Shock Absorption (Vertical)	Ground Effects® Impact Control System	Ground Effects® Impact Control System	Ground Effects® Impact Control System	Ground Effects® Impact Control System
Stride Support (Horizontal)	Integrated Footplant Technology™	Integrated Footplant Technology™	Integrated Footplant Technology™	Integrated Footplant Technology™
Speed Range	0.5 - 12 mph 0.8 - 19.2 kph	0.5 - 12 mph 0.8 - 19.2 kph	0.5 - 12 mph 0.8 - 19.2 kph	0.5 - 12 mph 0.8 - 19.2 kph
Elevation Range	0% - 15% Incline	0% - 15% Incline	0% - 15% Incline	0% - 15% Incline
Step-Up Height	9.5 in / 24 cm	9.5 in / 24 cm	9.5 in / 24 cm	9.5 in / 24 cm
Running Platform Width	22 in / 56 cm	22 in / 56 cm	22 in / 56 cm	22 in / 56 cm
Handlebars	Premium Full Length 18 in / 46 cm	Premium Full Length 18 in / 46 cm	Premium Full Length 18 in / 46 cm	Premium Full Length 18 in / 46 cm
Entertainment Options	-	-	Embedded	Embedded
User IDs	-	-	Unlimited with Preva®	Unlimited with Preva®
Custom Workouts per User ID	-	-	Unlimited with Preva®	Unlimited with Preva®
In-Workout Feedback Metrics	21	6	20	20
Pre-Programmed Workouts	27	3 custom intervals	27	27
Recommended Maximum	Tested up to	Tested up to	Tested up to	Tested up to
User Weight*	400 lbs / 181 kg	400 lbs / 181 kg	400 lbs / 181 kg	400 lbs / 181 kg
Dimensions	83 x 35 x 62 in	83 x 35 x 62 in	83 x 35 x 68.5 in	83 x 35 x 68.5 in
(LxWxH)	211 x 89 x 157.5 cm	211 x 89 x 157.5 cm	211 x 89 x 174 cm	211 x 89 x 174 cm
Product Weight	405 lb / 184 kg	405 lb / 184 kg	407 lb / 185 kg	412 lb / 187 kg
Power Requirements	120V, Dedicated 20A circuit with 5-20R NEMA receptacle	120V, Dedicated 20A circuit with 5-20R NEMA receptacle	120V, Dedicated 20A circuit with 5-20R NEMA receptacle	120V, Dedicated 20A circuit with 5-20R NEMA receptacle
<b>Home Warranty**</b>				
	10-year parts and wear items 3-year console 1-year labor	10-year parts and wear items 3-year console 1-year labor	10-year parts and wear items 3-year console 1-year labor	10-year parts and wear items 3-year console 1-year labor

■ Standard - Not offered

\* Precor does not deny warranty claims based on user weight. Weight limits reported are recommended for best performance based on internal testing.  
\*\* These Precor warranties are based on in-home usage and are not warranted for commercial settings.



# Experience™ Series Professional Treadmills 800 Line



MSRP	\$8,995	\$11,455	\$12,455
<b>Console</b>			
Console Type	P31 Advanced LED display	P62 10" LCD Capacitive Touch Screen	P82 15" LCD Capacitive Touch Screen
<b>Features</b>			
Frame Color Options	Black or Silver	Black or Silver	Black or Silver
Shock Absorption (Vertical)	Ground Effects® Impact Control System	Ground Effects® Impact Control System	Ground Effects® Impact Control System
Stride Support (Horizontal)	Integrated Footplant Technology™	Integrated Footplant Technology™	Integrated Footplant Technology™
Speed Range	0.5 - 16 mph 0.8 - 25.5 kph	0.5 - 16 mph 0.8 - 25.5 kph	0.5 - 16 mph 0.8 - 25.5 kph
Elevation Range	3% Decline - 15% Incline	3% Decline - 15% Incline	3% Decline - 15% Incline
Step-Up Height	9.5 in / 24 cm	9.5 in / 24 cm	9.5 in / 24 cm
Running Platform Width	22 in / 56 cm	22 in / 56 cm	22 in / 56 cm
Handlebars	Premium Full Length 18 in / 46 cm	Premium Full Length 18 in / 46 cm	Premium Full Length 18 in / 46 cm
Entertainment Options	-	Embedded	Embedded
User IDs	-	Unlimited with Preva®	Unlimited with Preva®
Custom Workouts per User ID	-	Unlimited with Preva®	Unlimited with Preva®
In-Workout Feedback Metrics	21	20	20
Pre-Programmed Workouts	27	27	27
Recommended Maximum User Weight*	Tested up to 400 lbs / 181 kg	Tested up to 400 lbs / 181 kg	Tested up to 400 lbs / 181 kg
Dimensions (LxWxH)	83 x 35 x 62 in 211 x 89 x 157.5 cm	83 x 35 x 68.5 in 211 x 89 x 174 cm	83 x 35 x 68.5 in 211 x 89 x 174 cm
Product Weight	420 lb / 190 kg	430 lb / 195 kg	430 lb / 195 kg
Power Requirements	120V, Dedicated 20A circuit with 5-20R NEMA receptacle	120V, Dedicated 20A circuit with 5-20R NEMA receptacle	120V, Dedicated 20A circuit with 5-20R NEMA receptacle
<b>Home Warranty**</b>			
	10-year parts and wear items 3-year console 1-year labor	10-year parts and wear items 3-year console 1-year labor	10-year parts and wear items 3-year console 1-year labor

■ Standard - Not offered

\* Precor does not deny warranty claims based on user weight. Weight limits reported are recommended for best performance based on internal testing.

\*\* These Precor warranties are based on in-home usage and are not warranted for commercial settings.

# Energy™ Series Compact Premium and Premium Home Ellipticals Fitness Crosstrainers™ 200 and 400 Line



MSRP	\$2,799	\$3,399	\$3,899	\$4,999	\$5,499
<b>Console</b>					
Console Type	R20 5" high contrast LCD	R20 5" high contrast LCD	R40 7" LCD Capacitive Touch Screen	R20 5" High Contrast LCD	R40 7" LCD Capacitive Touch Screen
<b>Features</b>					
Frame Color Options	Silver	Silver	Silver	Silver	Silver
CrossRamp® (Adjustable Incline Range)	Manual	Motorized variable	Motorized variable	Motorized variable	Motorized variable
CrossRamp® Elevation Levels/Range	3 levels 15, 20, 25 degrees	8 levels 15-25 degrees	8 levels 15-25 degrees	20 levels 15-40 degrees	20 levels 15-40 degrees
Resistance Levels	16	16	16	20	20
Variable Stride Length	18-21 in 46-53 cm	18-21 in 46-53 cm	18-21 in 46-53 cm	21-24 in 53-61 cm	21-24 in 53-61 cm
Step-Up Height	8.5 in / 22 cm	8.5 in / 22 cm	8.5 in / 22 cm	9.5 in / 24 cm	9.5 in / 24 cm
Handlebars	Moving	Moving	Moving	<b>Moving</b>	<b>Moving</b>
Entertainment Options	-	-	-	-	-
User IDs	2	2	4	2	2
Custom Workouts per User ID	0	0	4	0	0
In-Workout Feedback Metrics	13	13	27	13	27
Pre-Programmed Workouts	10	10	40 (24 preset, 16 custom)	10	40 (24 preset, 16 custom)
Maximum Resistance	550 Watts	550 Watts	550 Watts	625 Watts	625 Watts
Recommended Maximum User Weight*	Tested up to 275 lbs / 125 kg	Tested up to 275 lbs / 125 kg	Tested up to 275 lbs / 125 kg	Tested up to 350 lbs / 159 kg	Tested up to 350 lbs / 159 kg
Dimensions (LxWxH)	75 x 29 x 65 in 191 x 74 x 165 cm	75 x 29 x 65 in 191 x 74 x 165 cm	75 x 29 x 65 in 191 x 74 x 165 cm	84 x 31 x 67 in 213 x 79 x 171 cm	84 x 31 x 67 in 213 x 79 x 171 cm
Product Weight	193 lb / 72 kg	214 lb / 80 kg	214 lb / 80 kg	240 lb / 109 kg	240 lb / 109 kg
Power Requirements	120V	120V	120V	120V	120V
<b>Home Warranty**</b>	Lifetime frame and welds 5-year parts and wear items 3-year console 1-year labor	Lifetime frame and welds 5-year parts and wear items 3-year console 1-year labor	Lifetime frame and welds 5-year parts and wear items 3-year console 1-year labor	Lifetime frame and welds 10-year parts and wear items 3-year console 1-year labor	Lifetime frame and welds 10-year parts and wear items 3-year console 1-year labor

■ Standard - Not offered

\* Precor does not deny warranty claims based on user weight. Weight limits reported are recommended for best performance based on internal testing.

\*\* These Precor warranties are based on in-home usage and are not warranted for commercial settings.

# Experience™ Series Professional Elliptical Fitness Crosstrainers™ 600 and 700 Line



MSRP	\$5,995	\$8,095	\$9,095	\$5,795	\$8,145	\$9,145
<b>Console</b>						
Console Type	P30 Advanced LED display	P62 10" LCD Capacitive Touch Screen	P82 15" LCD Capacitive Touch Screen	P31 Advanced LED display	P62 10" LCD Capacitive Touch Screen	P82 15" LCD Capacitive Touch Screen
<b>Features</b>						
Frame Color Options	Black or Silver	Black or Silver	Black or Silver	Black or Silver	Black or Silver	Black or Silver
CrossRamp® (Adjustable Incline Range)	Motorized variable	Motorized variable	Motorized variable	Fixed	Fixed	Fixed
CrossRamp® Elevation Levels/Range	20 levels 10-35 degrees	20 levels 10-35 degrees	20 levels 10-35 degrees	20 degrees	20 degrees	20 degrees
Resistance Levels	20	20	20	20	20	20
Variable Stride Length	21-25 in 53-63 cm	21-25 in 53-63 cm	21-25 in 53-63 cm	22.5 in 57 cm	22.5 in 57 cm	22.5 in 57 cm
Step-Up Height	8 in / 20 cm	8 in / 20 cm	8 in / 20 cm	8 in / 20 cm	8 in / 20 cm	8 in / 20 cm
Handlebars	Moving	Moving	Moving	Moving	Moving	Moving
Entertainment Options	-	Embedded	Embedded	-	Embedded	Embedded
User IDs	-	Unlimited with Preva®	Unlimited with Preva®	-	Unlimited with Preva®	Unlimited with Preva®
Custom Workouts per User ID	-	Unlimited with Preva®	Unlimited with Preva®	-	Unlimited with Preva®	Unlimited with Preva®
In-Workout Feedback Metrics	18	18	18	18	18	18
Pre-Programmed Workouts	15	22	22	22	22	22
Maximum Resistance	534 Watts	534 Watts	534 Watts	720 Watts	720 Watts	720 Watts
Recommended Maximum User Weight*	Tested up to 350 lbs / 159 kg	Tested up to 350 lbs / 159 kg	Tested up to 350 lbs / 159 kg	Tested up to 350 lbs / 159 kg	Tested up to 350 lbs / 159 kg	Tested up to 350 lbs / 159 kg
Dimensions (LxWxH)	80 x 30 x 67 in 203 x 76 x 170 cm	80 x 28 x 71 in 203 x 71 x 180 cm	80 x 28 x 71 in 203 x 71 x 180 cm	80 x 28 x 67 in 203 x 71 x 170 cm	80 x 28 x 72 in 203 x 71 x 183 cm	80 x 28 x 72 in 203 x 71 x 183 cm
Product Weight	340 lb / 154 kg	340 lb / 154 kg	340 lb / 154 kg	278 lb / 126 kg	280 lb / 127 kg	286 lb / 130 kg
Power Requirements	Self-Powered	120V	120V	Self-Powered	120V	120V
<b>Home Warranty**</b>						
	Lifetime frame and welds 10-year parts and wear items 3-year console 1-year labor	Lifetime frame and welds 10-year parts and wear items 3-year console 1-year labor	Lifetime frame and welds 10-year parts and wear items 3-year console 1-year labor	Lifetime frame and welds 10-year parts and wear items 3-year console 1-year labor	Lifetime frame and welds 10-year parts and wear items 3-year console 1-year labor	Lifetime frame and welds 10-year parts and wear items 3-year console 1-year labor

■ Standard - Not offered

\* Precor does not deny warranty claims based on user weight. Weight limits reported are recommended for best performance based on internal testing.  
\*\* These Precor warranties are based on in-home usage and are not warranted for commercial settings.

# Experience™ Series Professional Ellipticals Fitness Crosstrainers™ 800 Line



MSRP	\$6,845	\$7,845	\$9,295	\$10,295	\$10,295	\$11,295
<b>Console</b>						
Console Type	P31 Advanced LED display	P31 Advanced LED display	P62 10" LCD Capacitive Touch Screen	P62 10" LCD Capacitive Touch Screen	P82 15" LCD Capacitive Touch Screen	P82 15" LCD Capacitive Touch Screen
<b>Features</b>						
Frame Color Options	Black or Silver	Black or Silver	Black or Silver	Black or Silver	Black or Silver	Black or Silver
CrossRamp® (Adjustable Incline Range)	Motorized & Converging	Motorized & Converging	Motorized & Converging	Motorized & Converging	Motorized & Converging	Motorized & Converging
CrossRamp® Elevation Levels/Range	20 levels 10-35 degrees	20 levels 10-35 degrees	20 levels 10-35 degrees	20 levels 10-35 degrees	20 levels 10-35 degrees	20 levels 10-35 degrees
Resistance Levels	20	20	20	20	20	20
Variable Stride Length	21-25 in 53-63 cm	21-25 in 53-63 cm	21-25 in 53-63 cm	21-25 in 53-63 cm	21-25 in 53-63 cm	21-25 in 53-63 cm
Step-Up Height	8 in / 20 cm	8 in / 20 cm	8 in / 20 cm	8 in / 20 cm	8 in / 20 cm	8 in / 20 cm
Handlebars	Fixed	Moving	Fixed	Moving	Fixed	Moving
Entertainment Options	-	-	Embedded	Embedded	Embedded	Embedded
User IDs	-	-	Unlimited with Preva®	Unlimited with Preva®	Unlimited with Preva®	Unlimited with Preva®
Custom Workouts per User ID	-	-	Unlimited with Preva®	Unlimited with Preva®	Unlimited with Preva®	Unlimited with Preva®
In-Workout Feedback Metrics	18	18	18	18	18	18
Pre-Programmed Workouts	15	15	22	22	22	22
Maximum Resistance	720 Watts	720 Watts	720 Watts	720 Watts	720 Watts	720 Watts
Recommended Maximum User Weight*	Tested up to 350 lbs / 159 kg	Tested up to 350 lbs / 159 kg	Tested up to 350 lbs / 159 kg	Tested up to 350 lbs / 159 kg	Tested up to 350 lbs / 159 kg	Tested up to 350 lbs / 159 kg
Dimensions (LxWxH)	80 x 28 x 67 in 203 x 71 x 170 cm	80 x 28 x 67 in 203 x 71 x 170 cm	80 x 28 x 72 in 203 x 71 x 183 cm	80 x 28 x 72 in 203 x 71 x 183 cm	80 x 28 x 72 in 203 x 71 x 183 cm	80 x 28 x 72 in 203 x 71 x 183 cm
Product Weight	330 lb / 150 kg	330 lb / 150 kg	340 lb / 154 kg	340 lb / 154 kg	340 lb / 154 kg	340 lb / 154 kg
Power Requirements	Self-Powered	Self-Powered	120V	120V	120V	120V
<b>Home Warranty**</b>						
	Lifetime frame and welds 10-year parts and wear items 3-year console 1-year labor	Lifetime frame and welds 10-year parts and wear items 3-year console 1-year labor	Lifetime frame and welds 10-year parts and wear items 3-year console 1-year labor	Lifetime frame and welds 10-year parts and wear items 3-year console 1-year labor	Lifetime frame and welds 10-year parts and wear items 3-year console 1-year labor	Lifetime frame and welds 10-year parts and wear items 3-year console 1-year labor

■ Standard - Not offered

\* Precor does not deny warranty claims based on user weight. Weight limits reported are recommended for best performance based on internal testing.

\*\* These Precor warranties are based on in-home usage and are not warranted for commercial settings.

# Experience™ Series Professional Adaptive Motion Trainers® 700 and 800 Line



MSRP	\$7,595	\$9,995	\$10,995	\$9,295	\$11,695	\$12,695
<b>Console</b>						
Console Type	P31 Advanced LED display	P62 10" LCD Capacitive Touch Screen	P82 15" LCD Capacitive Touch Screen	P31 Advanced LED display	P62 10" LCD Capacitive Touch Screen	P82 15" LCD Capacitive Touch Screen
<b>Features</b>						
Frame Color Options	Black or Silver	Black or Silver	Black or Silver	Black or Silver	Black or Silver	Black or Silver
Adaptive Stride Length	0 - 36 in 0 - 91 cm	0 - 36 in 0 - 91 cm	0 - 36 in 0 - 91 cm	0 - 36 in 0 - 91 cm	0 - 36 in 0 - 91 cm	0 - 36 in 0 - 91 cm
Open Stride™ (Adjustable Stride Height)	Fixed 7.8 in 19.8 cm	Fixed 7.8 in 19.8 cm	Fixed 7.8 in 19.8 cm	Adjustable 6.8 - 10 in 17 - 25 cm	Adjustable 6.8 - 10 in 17 - 25 cm	Adjustable 6.8 - 10 in 17 - 25 cm
Step-Up Height	6.5 in / 16.5 cm	6.5 in / 16.5 cm	6.5 in / 16.5 cm	6.5 in / 16.5 cm	6.5 in / 16.5 cm	6.5 in / 16.5 cm
Resistance Levels	20	20	20	20	20	20
Handlebars	Dual-Action	Dual-Action	Dual-Action	Dual-Action	Dual-Action	Dual-Action
Entertainment Options	-	Embedded	Embedded	-	Embedded	Embedded
User IDs	-	Unlimited with Preva®	Unlimited with Preva®	-	Unlimited with Preva®	Unlimited with Preva®
Custom Workouts per User ID	-	Unlimited with Preva®	Unlimited with Preva®	-	Unlimited with Preva®	Unlimited with Preva®
In-Workout Feedback Metrics	20	20	20	20	20	20
Pre-Programmed Workouts	6	12	12	6	12	12
Maximum Resistance	375 Watts	375 Watts	375 Watts	375 Watts	375 Watts	375 Watts
Recommended Maximum	Tested up to	Tested up to	Tested up to	Tested up to	Tested up to	Tested up to
User Weight*	350 lbs / 159 kg	350 lbs / 159 kg	350 lbs / 159 kg	350 lbs / 159 kg	350 lbs / 159 kg	350 lbs / 159 kg
Dimensions (LxWxH)	80 x 35 x 69 in 203 x 89 x 176 cm	80 x 35 x 73 in 203 x 89 x 186 cm	80 x 35 x 73 in 203 x 89 x 186 cm	80 x 35 x 69 in 203 x 89 x 176 cm	80 x 35 x 73 in 203 x 89 x 186 cm	80 x 35 x 73 in 203 x 89 x 186 cm
Product Weight	412 lb / 187 kg	422 lb / 192 kg	422 lb / 192 kg	412 lb / 187 kg	422 lb / 192 kg	422 lb / 187 kg
Power Requirements	Self-Powered	120V	120V	Self-Powered	120V	20V
Power Supply	Optional	-	-	Optional	-	-
<b>Home Warranty**</b>						
	Lifetime frame and welds 10-year parts and wear items 3-year console 1-year labor	Lifetime frame and welds 10-year parts and wear items 3-year console 1-year labor	Lifetime frame and welds 10-year parts and wear items 3-year console 1-year labor	Lifetime frame and welds 10-year parts and wear items 3-year console 1-year labor	Lifetime frame and welds 10-year parts and wear items 3-year console 1-year labor	Lifetime frame and welds 10-year parts and wear items 3-year console 1-year labor

■ Standard - Not offered

\* Precor does not deny warranty claims based on user weight. Weight limits reported are recommended for best performance based on internal testing.

\*\* These Precor warranties are based on in-home usage and are not warranted for commercial settings.

# Experience™ Series Professional Recumbent Bikes 600 and 800 Line



MSRP	\$3,044	\$4,895	\$5,895	\$4,335	\$6,645	\$7,645
<b>Console</b>						
Console Type	P30 Advanced LED display	P62 10" LCD Capacitive Touch Screen	P82 15" LCD Capacitive Touch Screen	P31 Advanced LED display	P62 10" LCD Capacitive Touch Screen	P82 15" LCD Capacitive Touch Screen
<b>Features</b>						
Frame Color Options	Black or Silver	Black or Silver	Black or Silver	Black or Silver	Black or Silver	Black or Silver
Resistance Levels	25	25	25	25	25	25
Drive System	Singlt-stage drive	Singlt-stage drive	Singlt-stage drive	Dual-stage drive	Dual-stage drive	Dual-stage drive
Step-Through Design	■	■	■	■	■	■
Seat	Medium Airflex Seat Back	Medium Airflex Seat Back	Medium Airflex Seat Back	Large Airflex Seat Back	Large Airflex Seat Back	Large Airflex Seat Back
Handlebars	2 Positions Console & Riding	2 Positions Console & Riding Console & Riding"	2 Positions Console & Riding Console & Riding"	2 Positions Console & Riding	2 Positions Console & Riding	2 Positions Console & Riding
Entertainment Options	-	Embedded	Embedded	-	Embedded	Embedded
User IDs	-	Unlimited with Preva®	Unlimited with Preva®	-	Unlimited with Preva®	Unlimited with Preva®
Custom Workouts per User ID	-	Unlimited with Preva®	Unlimited with Preva®	-	Unlimited with Preva®	Unlimited with Preva®
In-Workout Feedback Metrics	18	18	18	18	18	18
Pre-Programmed Workouts	12	17	17	12	17	17
Maximum Resistance	500 Watts	500 Watts	500 Watts	750 Watts	750 Watts	750 Watts
Recommended Maximum	Tested up to	Tested up to	Tested up to	Tested up to	Tested up to	Tested up to
User Weight*	350 lbs / 159 kg	350 lbs / 159 kg	350 lbs / 159 kg	350 lbs / 159 kg	350 lbs / 159 kg	350 lbs / 159 kg
Dimensions (LxWxH)	65 x 23 x 51 in 165 x 58 x 130 cm	65 x 23 x 52 in 165 x 58 x 132 cm	65 x 23 x 52 in 165 x 58 x 132 cm	67 x 23 x 54 in 170 x 58 x 136 cm	67 x 23 x 54 in 170 x 58 x 136 cm	67 x 23 x 54 in 170 x 58 x 136 cm
Product Weight	179 lb / 81 kg	192 lb / 87 kg	179 lb / 87 kg	210 lb / 95 kg	219 lb / 99 kg	219 lb / 99 kg
Power Requirements	Self-Powered	120V	120V	Self-Powered	120V	120V
Power Supply	Optional	-	-	Optional	-	-
<b>Home Warranty**</b>						
	Lifetime frame and welds 10-year parts and wear items 3-year console 1-year labor	Lifetime frame and welds 10-year parts and wear items 3-year console 1-year labor	Lifetime frame and welds 10-year parts and wear items 3-year console 1-year labor	Lifetime frame and welds 10-year parts and wear items 3-year console 1-year labor	Lifetime frame and welds 10-year parts and wear items 3-year console 1-year labor	Lifetime frame and welds 10-year parts and wear items 3-year console 1-year labor

■ Standard - Not offered

\* Precor does not deny warranty claims based on user weight. Weight limits reported are recommended for best performance based on internal testing.

\*\* These Precor warranties are based on in-home usage and are not warranted for commercial settings.

# Experience™ Series Professional Upright Bikes 600 and 800 Line



MSRP	\$2,744	\$4,595	\$5,595	\$4,025	\$6,335	\$7,335
<b>Console</b>						
Console Type	P30 Advanced LED display	P62 10" LCD Capacitive Touch Screen	P82 15" LCD Capacitive Touch Screen	P31 Advanced LED display	P62 10" LCD Capacitive Touch Screen	P82 15" LCD Capacitive Touch Screen
<b>Features</b>						
Frame Color Options	Black or Silver	Black or Silver	Black or Silver	Black or Silver	Black or Silver	Black or Silver
Resistance Levels	25	25	25	25	25	25
Drive System	Single-stage drive	Single-stage drive	Single-stage drive	Dual-stage drive	Dual-stage drive	Dual-stage drive
Step-Through Design	-	-	-	-	-	-
Seat	10.5 in (27 cm) width	10.5 in (27 cm) width	10.5 in (27 cm) width	10.5 in (27 cm) width	10.5 in (27 cm) width	10.5 in (27 cm) width
Handlebars	3 Positions Upright, Cruising, & Road	3 Positions Upright, Cruising, & Road	3 Positions Upright, Cruising, & Road	3 Positions Upright, Cruising, & Road	3 Positions Upright, Cruising, & Road	3 Positions Upright, Cruising, & Road
Entertainment Options	-	Embedded	Embedded	-	Embedded	Embedded
User IDs	-	Unlimited with Preva®	Unlimited with Preva®	-	Unlimited with Preva®	Unlimited with Preva®
Custom Workouts per User ID	-	Unlimited with Preva®	Unlimited with Preva®	-	Unlimited with Preva®	Unlimited with Preva®
In-Workout Feedback Metrics	18	18	18	18	18	18
Pre-Programmed Workouts	12	17	17	12	17	17
Maximum Resistance	500 Watts	500 Watts	500 Watts	750 Watts	750 Watts	750 Watts
Recommended Maximum	Tested up to	Tested up to	Tested up to	Tested up to	Tested up to	Tested up to
User Weight*	350 lbs / 159 kg	350 lbs / 159 kg	350 lbs / 159 kg	350 lbs / 159 kg	350 lbs / 159 kg	350 lbs / 159 kg
Dimensions (LxWxH)	43 x 21 x 57 in 109 x 53 x 145 cm	42 x 21 x 58 in 109 x 53 x 147 cm	42 x 21 x 59 in 109 x 53 x 150 cm	48 x 21 x 59 in 122 x 53 x 157 cm	48 x 21 x 62 in 122 x 53 x 157 cm	48 x 21 x 62 in 122 x 53 x 157 cm
Product Weight	144 lb / 65 kg	144 lb / 65 kg	144 lb / 65 kg	160 lb / 73 kg	169 lb / 77 kg	169 lb / 77 kg
Power Requirements	Self-Powered	120V	120V	Self-Powered	120V	120V
Power Supply	Optional	-	-	Optional	-	-
<b>Home Warranty**</b>						
	Lifetime frame and welds 10-year parts and wear items 3-year console 1-year labor	Lifetime frame and welds 10-year parts and wear items 3-year console 1-year labor	Lifetime frame and welds 10-year parts and wear items 3-year console 1-year labor	Lifetime frame and welds 10-year parts and wear items 3-year console 1-year labor	Lifetime frame and welds 10-year parts and wear items 3-year console 1-year labor	Lifetime frame and welds 10-year parts and wear items 3-year console 1-year labor

■ Standard - Not offered

\* Precor does not deny warranty claims based on user weight. Weight limits reported are recommended for best performance based on internal testing.

\*\* These Precor warranties are based on in-home usage and are not warranted for commercial settings.

# Spinner® Professional Indoor Bikes

Spinner® Ride™



Spinner® Shift™



Spinner® Chrono™ Power



<b>MSRP</b>			
Chain	<b>\$1,445</b>	-	-
Belt	<b>\$1,695</b>	<b>\$2,095</b>	<b>\$3,095</b>
<b>Console</b>			
Included with Bike	Optional	Optional	Included
Display Type	Spinning® Studio LCD	Spinning® Studio LCD	Spinner® Power Color LCD
Receiver	Compatible with ANT+ Heart Rate Transmitters	Compatible with ANT+ Heart Rate Transmitters	Bluetooth® compatible to share data with smartphone & compatible with ANT+ Heart Rate Transmitters
Workout Metrics	6	6	9
<b>Features</b>			
Frame Color	White	Grey	Black
Frame	Alloy Steel	E-Coated Performance Steel	Aluminum
Drive	Chain / Poly-V Belt	Poly-V Belt	Kevlar® Belt
Resistance	Friction	Friction	Magnetic
Power Measurement/Generation	-	-	Direct/Self-Generating
Pedals	Dual-Sided, SPD compatible	Dual-Sided, SPD compatible	Dual-Sided, SPD compatible
Pedal Mount	Morse Taper	Morse Taper	Morse Taper
Handlebar Material	Dipped	Dipped	Dipped
Adjustment Style	Pop Pin	Pop Pin	Pop Pin
Handlebar Fore-Aft	Fixed	2.5 in / 6.35 cm	2.5 in / 6.35 cm
Handlebar Up-Down	4 in / 10.2 cm	6.5 in / 16.5 cm	6.5 in / 16.5 cm
Seat Fore-Aft	8 in / 20.3 cm	8 in / 20.3 cm	8 in / 20.3 cm
Seat Up-Down	11 in / 28 cm	11 in / 28 cm	11 in / 28 cm
Recommended Maximum User Weight*	Tested up to 350 lbs / 159 kg	Tested up to 350 lbs / 159 kg	Tested up to 350 lbs / 159 kg
Exerciser Height Range	59-76 in 150 cm to 193 cm	59-76 in 150 cm to 193 cm	59-76 in 150 cm to 193 cm
Dimensions (LxW)	48 x 20 in / 122 x 52 cm	48 x 20 in / 122 x 52 cm	48 x 20 in / 122 x 52 cm
Product Weight	124 lb / 56.4 kg	140 lb / 63.5 kg	110 lb / 50 kg
Power Requirements	Self-Powered	Self-Powered	Self-Powered
<b>Home Warranty</b>	7-years frame + 2-years timing belt 2-year mechanical + 1-year console 90-days wear items 1-year labor	7-years frame + 2-years timing belt 2-year mechanical + 1-year console 90-days wear items 1-year labor	10-years frame + 10-years timing belt 2-year mechanical + 1-year console + 90-days wear items 1-year labor

■ Standard - Not offered

\* Precor does not deny warranty claims based on user weight. Weight limits reported are recommended for best performance based on internal testing.



# CORE AND STRETCHING



# CORE AND STRETCHING

## StretchTrainer™ 240i

The professional model StretchTrainer 240i enables exercisers to prepare their bodies for a stronger and more satisfying workout. A staple in fitness facilities and a favorite among exercisers across the globe.

## V-Crunch

Using the body's own weight as leverage, the V-Crunch allows exercisers to perform leg raises with resistance that's less than their own body weight.

## Ab-X

The unique "floating pivot point" design of the Ab-X creates the ideal "crunch" movement while the contoured pads reduce stress to neck and shoulders.



MSRP	\$995	\$1,035	\$1,350
<b>Features</b>			
Instructional Placard	■	-	-
Workouts	8	-	-
Rubber Feet	■	■	■
<b>Weight &amp; Dimensions</b>			
Product Weight	60 lb / 27 kg	205 lb / 93 kg	150 lb / 68 kg
Dimensions (LxWxH) (painted & plated)	52 x 28 x 36 in 132 x 72 x 92 cm	50 x 28 x 63 in 127 x 71 x 160 cm	68 x 36 x 38 in 173 x 90 x 97 cm

■ Standard - Not offered

### Colors Options

Frame



Gloss Metallic Silver

Upholstery



Black

• Colors may vary.

# STRENGTH



# BENCH OPTIONS

## Home Bench

With six different back position adjustments, our home bench will help you make the most of your strength training program.

## DBR 101 Flat Bench

This heavy-duty bench is staple in professional fitness centers, hotels, and universities around the world.

## DBR 119 Multi-Adjustable Bench

This professional bench offers six different back and three seat adjustments to help personalize each workout.



Home Bench

Flat Bench  
DBR 101

Multi-Adjustable Bench  
DBR 119



MSRP	\$399	\$510	\$1,200
<b>Features</b>			
Instructional Placard	-	-	-
Adjustments	6-back	-	6-back and 3-seat
Rubber Feet	■	■	■
<b>Weight &amp; Dimensions</b>			
Product Weight	62 lb / 28 kg	64 lb / 29 kg	106 lb / 48 kg
Dimensions (LxWxH) (painted & plated)	49 x 16 x 10 in 124 x 41 x 25 cm	52 x 30 x 15 in 133 x 75 x 38 cm	55 x 29.5 x 18 in 140 x 75 x 46 cm
Max User Weight*	250 lb / 113 kg	350 lb / 159 kg	350 lb / 159 kg

■ Standard    - Not offered/not applicable

\*Precor does not deny warranty claims based on user weight. Weight limits reported are recommended for best performance based on internal testing.

### Colors Options

Frame



Gloss Metallic Silver

Upholstery



Black

• Colors may vary.

# FUNCTIONAL TRAINING

## FTS GLIDE

The compact footprint of this professional functional training system offers resistance training with freedom of motion to help you increase your core, strength, balance, stability, and coordination. Pairs well with our benches.



FTS Glide



<b>MSRP</b>	<b>\$4,045</b>
<b>Features</b>	
Frame Color Options	Black or Silver
Instructional Placard	■
Workouts	unlimited
Rubber Feet	■
<b>Weight &amp; Dimensions</b>	
Product Weight	672 lb / 305 kg
Dimensions (LxWxH) (painted & plated)	53 x 48 x 85 in 135 x 123 x 216 cm
Max User Weight*	-

■ Standard    - Not offered/not applicable

# Discovery™ Series Professional Racks

Weight Plate Tree  
DBR 817



3-Tier 10-Pair Dumbbell Rack  
DBR 814



2-Tier 10-Pair Dumbbell Rack  
DBR 812



Barbell Rack  
DBR 808



Olympic Squat Rack  
DBR 608



Half Rack  
DBR 611



Power Rack  
DBR 610



MSRP	\$540	\$1,090	\$1,190	\$1,290	\$1,760	\$2,500	\$3,450
<b>Features</b>							
Frame Color	Silver	Silver	Silver	Silver	Silver	Silver	Silver
Weight Storage	8-weight horns	10-pairs of dumbbells	10-pairs of dumbbells	10 barbells	8-weight horns 7-bar catches	10-weight horns Step-up, Dual vertical Olympic Bar	10-weight horns Step-up, Dual vertical Olympic Bar
Maximum Lift Load					600 lb / 273 kg	600 lb / 273 kg	800 lb / 363 kg
Minimum Workout Area (L x W)					120.5 x 108 in / 603 x 274 cm		
Recommended Maximum Storage Weight*	Tested up to 1,000 lbs / 455 kg	Tested up to 500 lbs / 227 kg	Tested up to 1,600 lbs / 726 kg	Tested up to 800 lbs / 363 kg	Tested up to 1,760 lbs / 800 kg	Tested up to 2,200 lbs / 1,000 kg	Tested up to 2,200 lbs / 1,000 kg
Dimensions (LxWxH)	26 x 30 x 47 in	51 x 30 x 41 in	87 x 28 x 32 in	41 x 33.5 x 59 in	67 x 64 x 74.5 in	71 x 61 x 98 in	83 x 63 x 98 in
Product Weight	65 x 75 x 120 cm 77 lb / 35 kg	130 x 77 x 105 cm 213 lb / 98 kg	220 x 70 x 81 cm 207 lb / 94 kg	105 x 85 x 150 cm 183 lb / 183 kg	171 x 162 x 189 cm 273 lb / 124 kg	180 x 155 x 249 cm 453 lb / 206 kg	210 x 160 x 249 cm 612 lb / 278 kg
<b>Home Warranty**</b>							
	10-year frame and welds	10-year frame and welds	10-year frame and welds	10-year frame and welds	10-year frame and welds	10-year frame and welds	10-year frame and welds
	5-year structural moving parts	5-year structural moving parts	5-year structural moving parts	5-year structural moving parts	5-year structural moving parts	5-year structural moving parts	5-year structural moving parts
	1-year labor	1-year labor	1-year labor	1-year labor	1-year labor	1-year labor	1-year labor

■ Standard - Not offered

\* Precor does not deny warranty claims based on user weight. Weight limits reported are recommended for best performance based on internal testing.  
 \*\* These Precor warranties are based on in-home usage and are not warranted for commercial settings.

## Limited Standard Home Warranty Overview\*

### Backed by one of the best warranties in the industry

We're proud of our reputation for designing and making durable and quality equipment. That's why we confidently offer one of the best warranties available for fitness equipment:

Home Cardio Lines*		
Series	Energy™ Series 200 Line	Precision™ Series 400 Line
Frame	Lifetime	Lifetime
Motor Drive	5 years	10 years
Parts	5 years	10 years
Limited Parts	See full warranty	See full warranty
Console/Screen	3 years	3 years
Labor	1 year	1 year

Commercial Cardio Lines*	
Series	Experience™ Series 600, 700, and 800 Lines
Frame	Lifetime
Motor Drive	10 years
Parts	3 years
Limited Parts	See full warranty
Console/Screen	3 years
Labor	1 year

Spinner® Bikes		
Model	Spinner® Chrono™ Power	Spinner® Ride™ & Spinner® Shift™
Frame	10 years	7 years
Parts	2 years	2 years
Labor	1 year	1 year
Belt	10 years	2 years
Wear Items	90 days	90 days
Console	1 year	1 year

Strength, Stretch, & Core*	
Frame & Welds	10 years
Structural Parts	5 years
Other Parts	1 year
Upholstery	3 years
Labor	1 year

### Precor stands behind our products, installers, and servicers

We strive to provide quality equipment, exceptional customer service, and a warranty that protects your investment in the event your equipment should encounter specific issues.

To ensure you receive the quality service you deserve, we select Precor Dealers, Installers and Servicers whom we believe share our vision of quality and service, and we provide training to them for proper installation and maintenance.

\* These Precor warranties are based on in-home usage and are not warranted for commercial settings  
 To view the full residential cardiovascular equipment limited warranty, [click here](#).  
 To view the full commercial cardio equipment sold into a home warranty, [click here](#).  
 To view the full strength, stretch, and core warranty for equipment sold into a home, [click here](#).  
 To view the full Spinner bike warranty, [click here](#).



**PRECOR USA**

Precor Incorporated  
20031 142nd Avenue NE  
P.O. Box 7202  
Woodinville, WA, 98072-4002  
T: +1 425-486-9292  
T: +1 800-786-8404  
[www.precorathome.com](http://www.precorathome.com)