

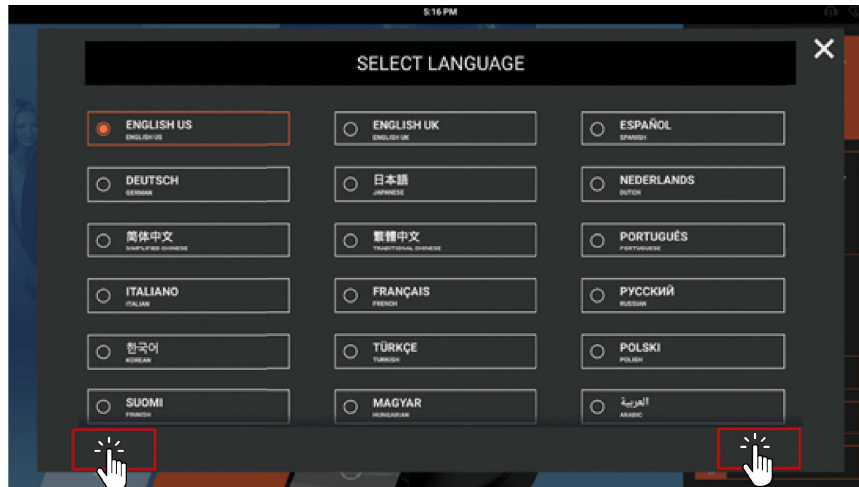
6. Manager Configuration

Accessing System Options

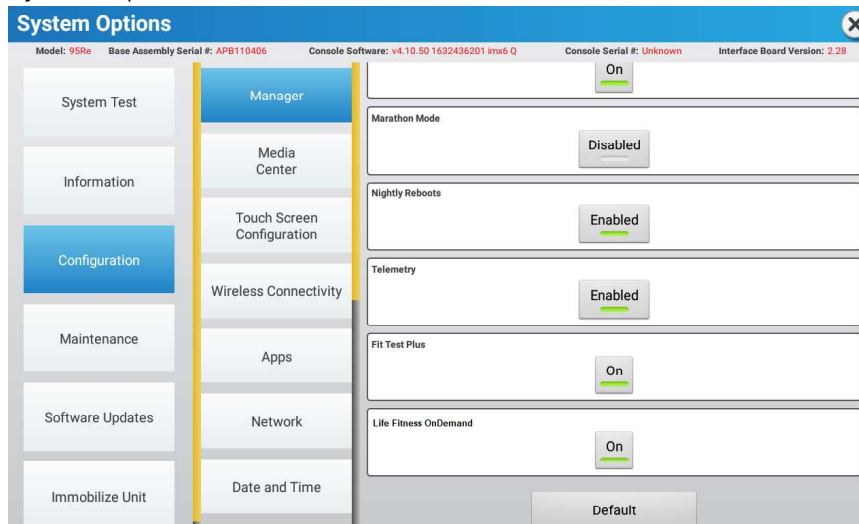
1. Select **Language** icon from Attract Screen to access the **Select Language** screen.



2. Tap the bottom part of the **Select Language** screen in the following sequence: **Lower-Left, Lower-Right, Lower-Left, Lower-Right**.

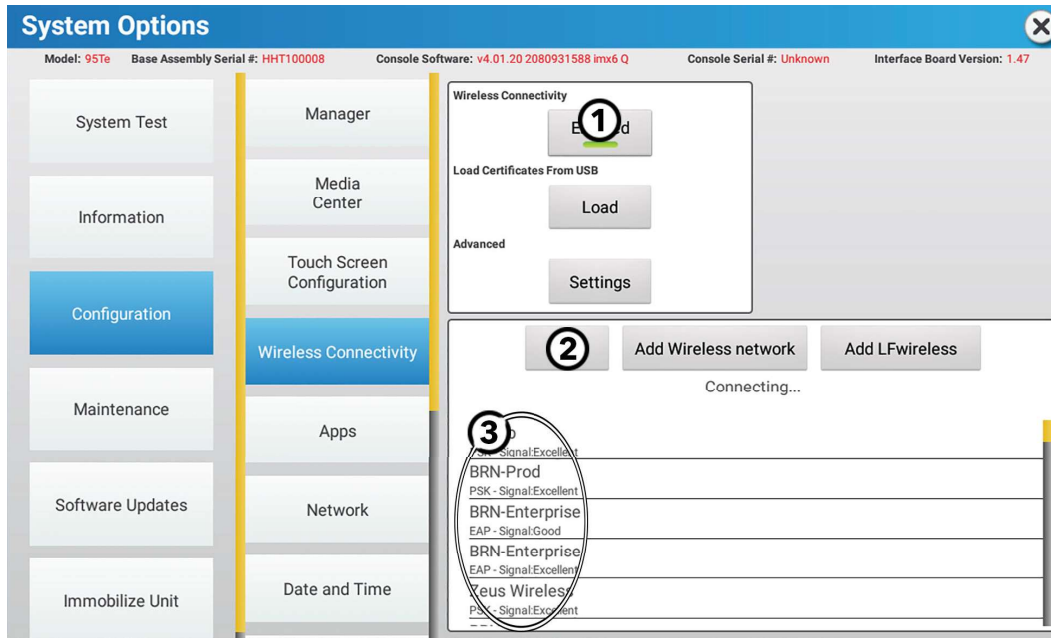


3. Navigate through the System Options menu.

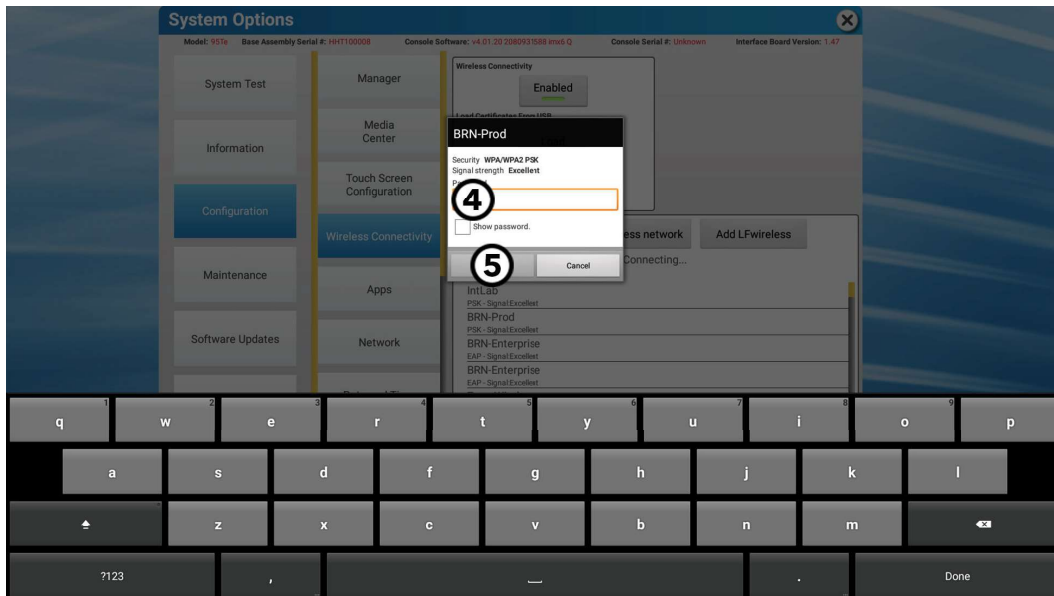


Wireless Connectivity

NOTE: If your equipment is connected to the internet with an Ethernet cable, please see the Ethernet section in the Configuration Menu.



1. Press **Enable/Disable** to activate or deactivate wireless abilities.
2. Press **Scan** to scan for wireless networks in your area.
3. Find and select your wireless router by pressing on the screen.



4. Enter your wireless router's password.
5. Press **Confirm** to establish a connection to your wireless router.

Internet Requirements

Minimum download bandwidth requirements for 1-16 units:

- 2.5 mbps
- +0.25 mbps for more than 16 units.

Minimum upload bandwidth requirements for 1-20 units:

- 0.5 mbps
- +0.25 mbps for more than 20 units.

Wired Local Area Network (LAN) requirements:

You will need to provide the DHCP addresses for all of your units if your units are wired to the internet using an Ethernet cable. You will need a switch capable of aggregating the individual Ethernet cables.

1-7 units

- 8-port 10/100/1000

8-23 units

- 24-port 10/100/1000

24-47 units

- 48-port 10/100/1000

Wireless Local Area Network (LAN) requirements:

- Dual band 2.4/5 GHz wireless router
- WPA2-PSK wireless router security
- Equipment must be mounted to the ceiling or wall. Do not place your wireless routers on the floor.