

## Front Receiver Mount Installation

\*Please read all the instructions before beginning\*

### Tools Required:

- T15 torx bit
- 7mm, 10mm, 15mm, and 18mm sockets
- 18mm wrench
- ¾" socket and wrench
- Ratchet and assorted extensions



### Prepping vehicle for installation

**Step 1:** Start with removing the negative battery terminal. Now, begin removing the front fascia. There are a series of T15 torx screws that follow the perimeter of the front fascia (Note: you will need to remove the skid plate to access all the screws, with a 15mm socket). Going through the slot below the grill, you can remove two 10mm bolts tucked up in the fascia (ZR2 models have 4).

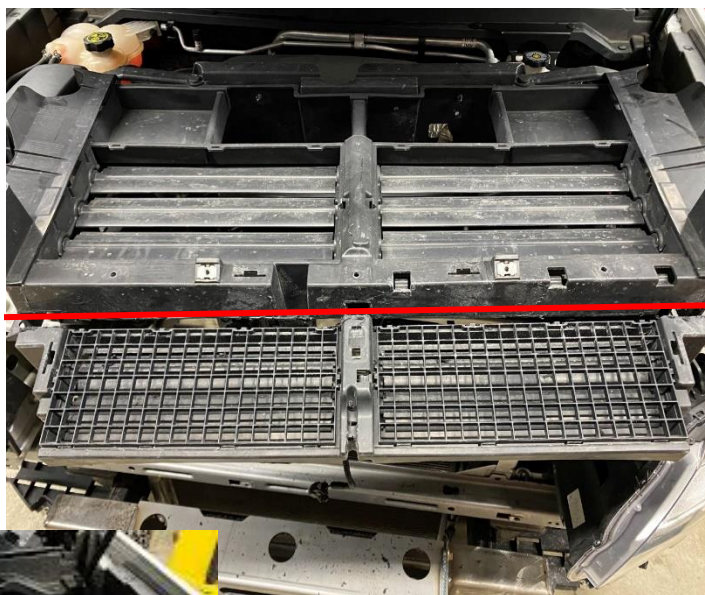


**Step 2:** Remove the T15 torx screws on the front half of the inner fender liner. (Removing the front tires can make these easier to access, but not necessary). With the wheel liner folded out of the way, you can remove the 3 (per side) 7mm screws that attach the fascia to the fenders. You should be able to remove the fascia at this point. Once removed, you can remove the foam insert in the lower portion of the bumper. Using a flathead screwdriver, pry the two clips off to remove the foam. With the foam removed you can trim the center two plastic uprights in the opening of the grill.



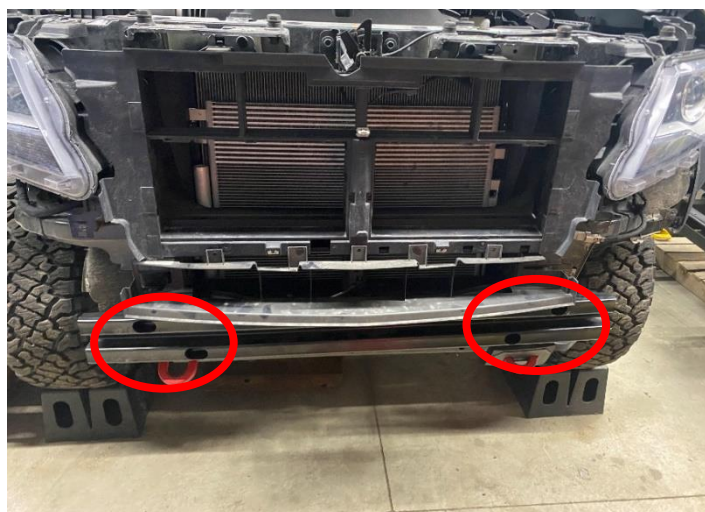


**Step 3:** With the Fascia removed, you can remove the Active Aero Shutter housing from the radiator tie bar. Not all vehicles have the active shutters, but they all have the same housing. The housing is held on with a series of 10mm bolts around its perimeter and two clips at the top. To completely remove the housing, you will need to unplug the wiring harness on the lower drivers side. With the housing removed, you will need to trim the lower portion off. An Oscillating Multi Tool works well for trimming the plastic.



If equipped with active shutters, you will need to remove the plastic arm connecting the upper and lower shutters. Once you have trimmed the shutter housing, you can reinstall it.

**Step 4:** Remove the crash bar that's bolted to the front of the frame rails, using the 15mm socket. Next, remove the factory tow hooks and hardware with the 18mm socket and wrench. Unclip and remove the plastic air scoop.



## Prepping mount and installation

**Step 1:** Install the side brackets to the center receiver section, leaving the hardware loose, using the provided gold ½ inch bolts, washers, and lock nuts. Now the assembly can be moved into position on the frame. Help from a friend is highly recommended. With the mount in position, install the 4 factory 15mm head crash bar bolts back into the frame and snug them up but don't fully tighten. Then reinstall the factory tow hooks and 18mm head bolts, passing them through the lower bracket of the frame mounts and snug them up but don't fully tighten. Now that everything is in position you can fully tighten all of the bolts, starting with the ¾ head ½ inch bolts, then the 15mm head frame bolts and finally the 18mm head tow hook bolts.





**Step 2:** Now is a good time wire the winch, if you are planning on installing a power leads at the receiver for the winch.

**Step 3:** You can now reinstall the front fascia, making sure you fully seat the two large clips below each headlight. With the fascia fully installed, the hitch will be centered in the grill opening. Now reinstall the skid plates.



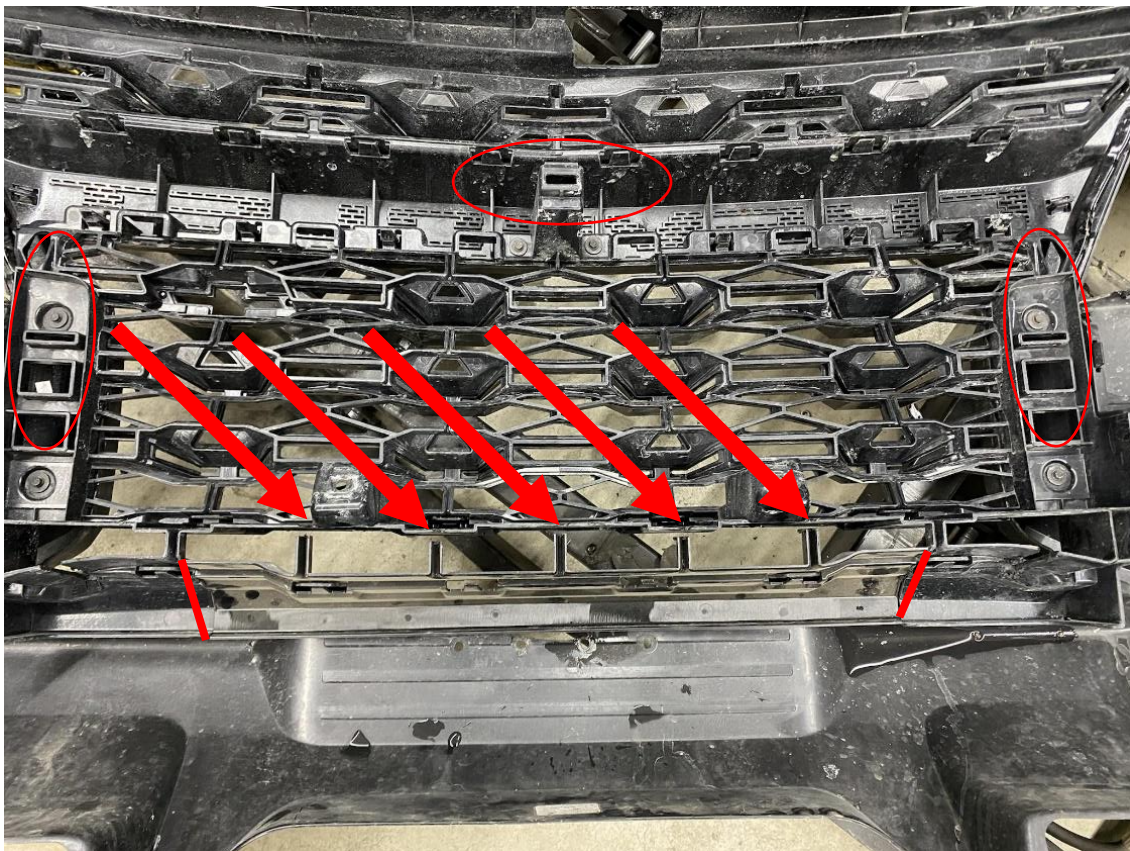
## 21-22 ZR2 Front Receiver Cut-out

### Tools Required:

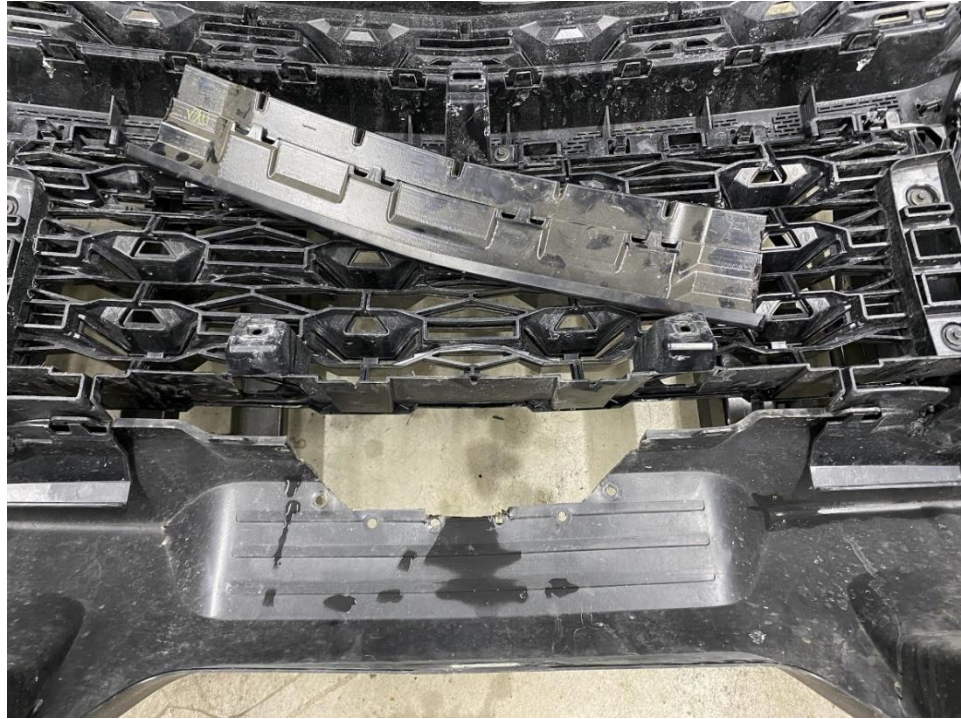
- Trim Tool
- 5mm allen hex key
- 7mm socket and ratchet
- 13mm wrench
- Tape Measure
- Silver Sharpie
- Cutting Tool
- Drill and 23/64 inch drill bit

**Step 1:** Remove the center grill portion from the fascia. There are six 7mm head screws holding the grill portion in, along with a series of tabs. With the screws removed, release the tabs along the perimeter and remove the center grill.

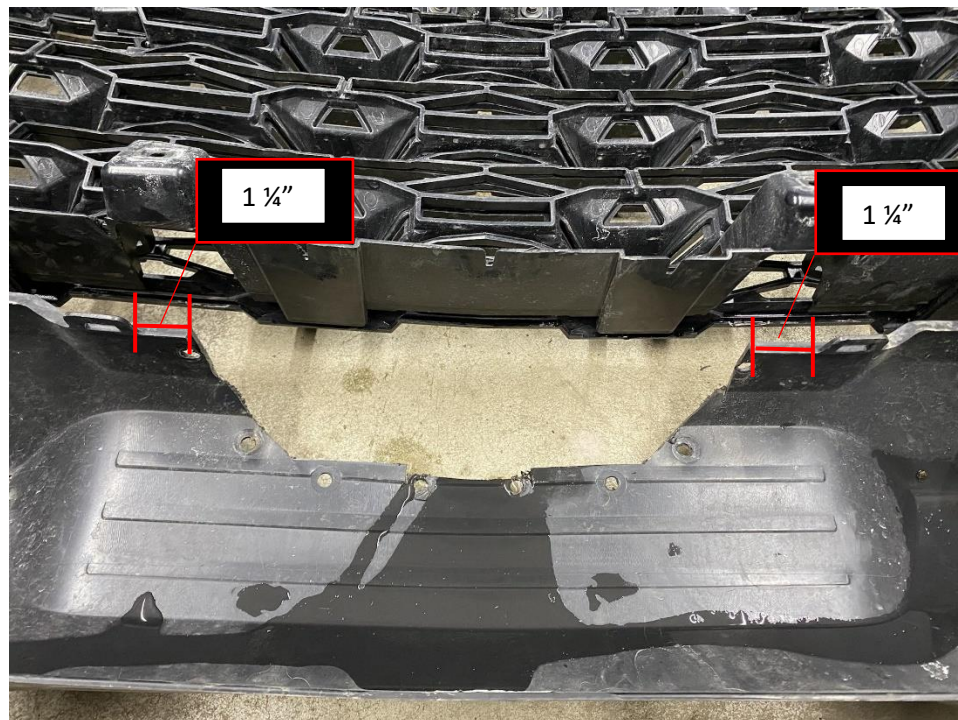
**Step 2:** To make room for the front receiver to fit below the grill we must remove some plastic from the center grill portion. You will be removing the five center uprights and adjoining lower plastic structure. Using your cutting tool (we have had great luck using an Oscillating Multi-Tool with a metal cutting



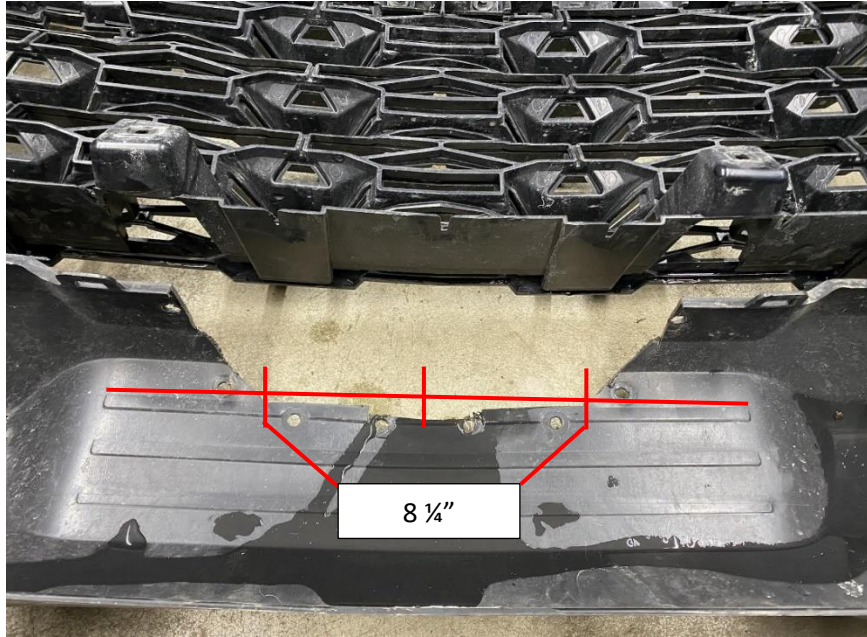
blade) start by trimming the 5 center upright ribs flush with the grill structure above them. Next you will trim flush with the outer upright ribs, straight through, removing that portion of the center grill.



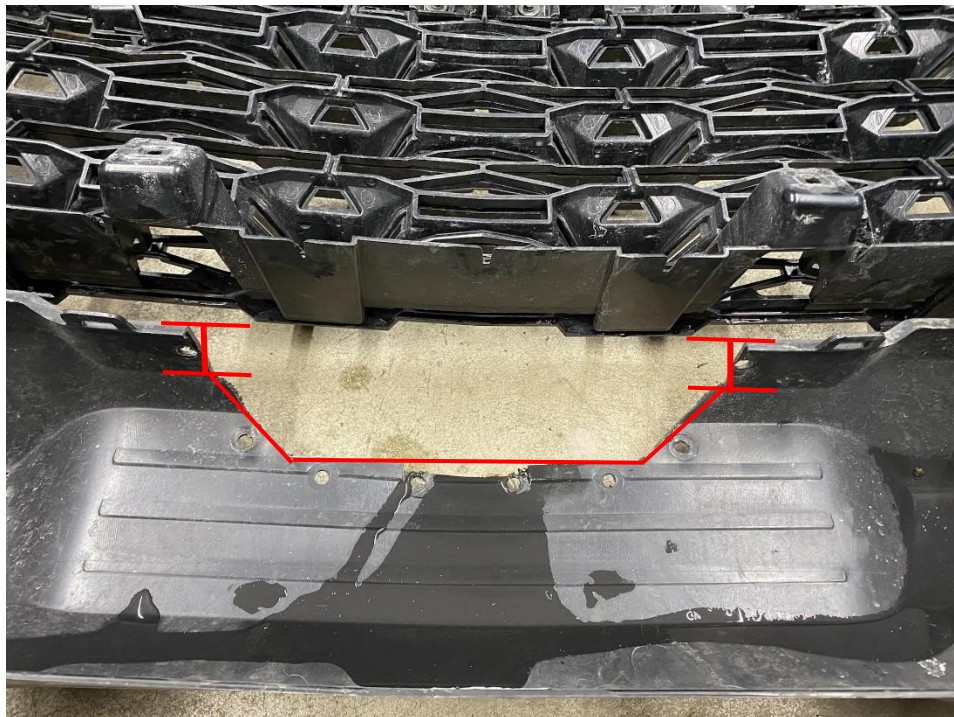
**Step 3:** Now we can measure for trimming the fascia to install the receiver close out panel. Located the tabs in the center of the lower portion of the fascia. Measure in, towards the center, 1 ¼ inches from both tabs and make a mark with your sharpie.



**Step 4:** Below those marks, locate the upper horizontal rib. Measure the length of the upper rib and mark the middle. Measure out from the middle 4 1/8 inches on both sides of center. You will have an 8 1/4 inch long line when finished.

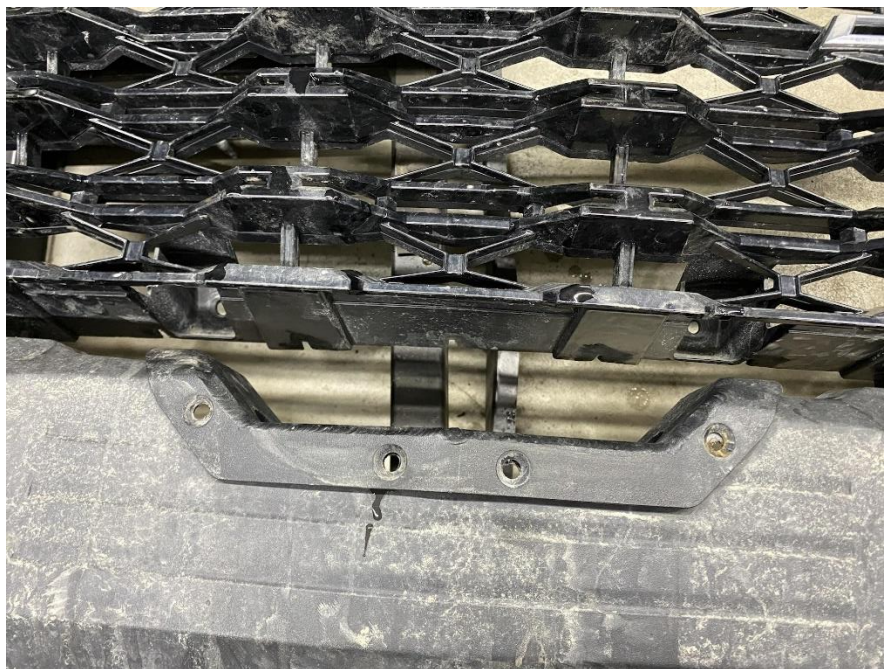


**Step 5:** Before you can connect the lines you will need to make a straight line down from your upper 1 1/4 inch lines towards the front of the fascia. Now you can connect the ends of the lower line angling out to the ends of your straight upper lines. Some final sanding or trimming may be required to get a good fit.





**Step 6:** From the front of the fascia, place the close out panel into the hole you cut out and mark the holes. With the panel removed you can drill them out with a 23/64 drill bit. Reinstall the Panel with the included Stainless hardware using the 5mm hex allen key and 13mm wrench.



**Step 7:** Reinstall the fascia on the vehicle.