



An alignment is recommended after installation

1" ZR2 Level Installation



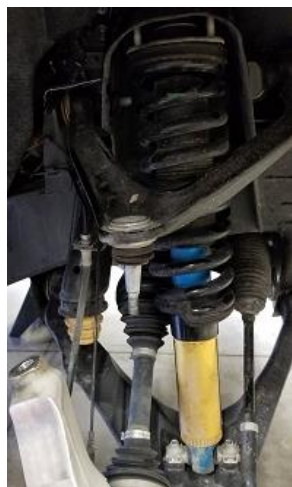
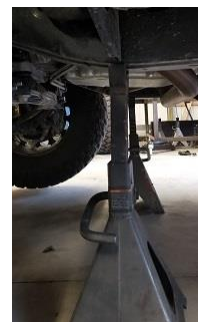
Tools Required:

- 13mm socket, 15mm socket, 18mm socket, and ratchet
- 15mm and 18mm wrenches
- Hydraulic jack
- 2 jack stands

Parts List:

- 2 Spacers
- 2 Bump Stops
- Hardware

Step 1: Jack the vehicle up and stabilize the frame rails behind the front tires on two jack stands. Allow the front suspension to fully droop. Remove the front two wheels and tires.



Step 2: Remove the two lower strut bolts from the lower arm with a 15mm socket and ratchet. Using a 13mm socket and 15mm wrench, remove sway bar links.

Step 3: Remove the three upper strut nuts with a 18mm wrench.

Step 4: Remove the nut attaching the upper arm to the knuckle with an 18mm socket and ratchet. As the knuckle drops, watch the brake line so that it doesn't get too tight and break.



Step 5: Slide the strut down enough to allow you to place the spacer on top.



Step 6: Use three (3) of the included lock nuts to secure the strut with a 15mm wrench.

Step 7: Remove the factory bump stop, and insert the new extended bump stop. They can be a nice snug fit and need a little force to fully seat.

Step 8: Install the lower strut bolts to the lower arm with the 15mm socket and ratchet.

Step 9: Reattach the upper arm to the knuckle with the nut, 18mm socket, and ratchet. Using a 13mm socket and 15mm wrench, reattach sway bar links.



Step 10: Repeat steps 2-9 on the other side.