

MOBIDERM[®]

Using Mobiderm
for lower leg oedema & foot trauma

by Heather Harmon
harmon1568@hotmail.com

HISTORY

- 39 Year old male
- Presents with (L) dorsum of foot oedema plus extensive soft tissue damage to (L) ankle and leg due to a spiral ankle trauma /accident 4 years prior.
- Constant pain.
- Finds it difficult to wear shoes



Above: Photos of patient at 1st presentation on 30/05/2019

TREATMENT PLAN

- 2 x weekly Biplast taping with Mobiderm autofit garment worn over the top. Taping remained on for 3 days post application.
- Mobiderm autofit garment was worn daily in between treatments.
- On the second application a patch of mobiderm 15mm x 15mm squares was placed around the ankle as well as over the dorsum of the foot.

MOBIDERM® Biplast taping of the foot:

To make it easier to tape bandage the leg we now have the option to tape the foot with Biplast (adhesive compression tape).

[Click here to watch the video Taping the foot with Biplast](#)

Equipment



Mobiderm
5mm x 5mm

Biplast tape
10 cm &
3cm (right)



MOBIDERM® Autofit sock

MOBIDERM
autofit
Chaussette standard - Standard sock

TRAITEMENT DU LYMPHOÉDÈME - TREATMENT OF LYMPHOEDEMA

(10) Hauteur entre le sol et le genou (prise au-dessous du pli du genou face arrière)
Rise-to-knee height (measurement taken below the bend of the knee, back side)

Quantité de chaussettes par boîte (10)	Dimension de pied (cm)	Dimension de pied (pouces)	Quantité de chaussettes par boîte (10)
71	31 - 35 cm	12 - 14 cm	25 - 30 cm
72	35 - 38 cm	14 - 15 cm	32 - 42 cm
73	39 - 42 cm	15 - 17 cm	38 - 48 cm
74	43 - 46 cm	17 - 18 cm	44 - 54 cm

	(cm)
Coulet / short	38 - 40 cm
Normal / normal	40 - 42 cm
Long / long	42 - 44 cm
Taille long / oversize	44 - 46 cm

For orders and information
Please contact:

Medical Rehab Pty Ltd
Ph: 0433 847 576
Ph: 0613 311 307
Fax: 03 9481 8003
E: info@medical-rehab.com.au
W: www.mobiderm.com.au

THUASNE
130 rue de Marivaux Aubien
CS 10032
62209 Lavellecq-Rennez Cedex France
Commandes/Orders (in French):
Tél.: 04 77 81 40 42 (France)
Tél.: +33 (0)4 77 81 40 01/02 (Export)
www.thuasne.com

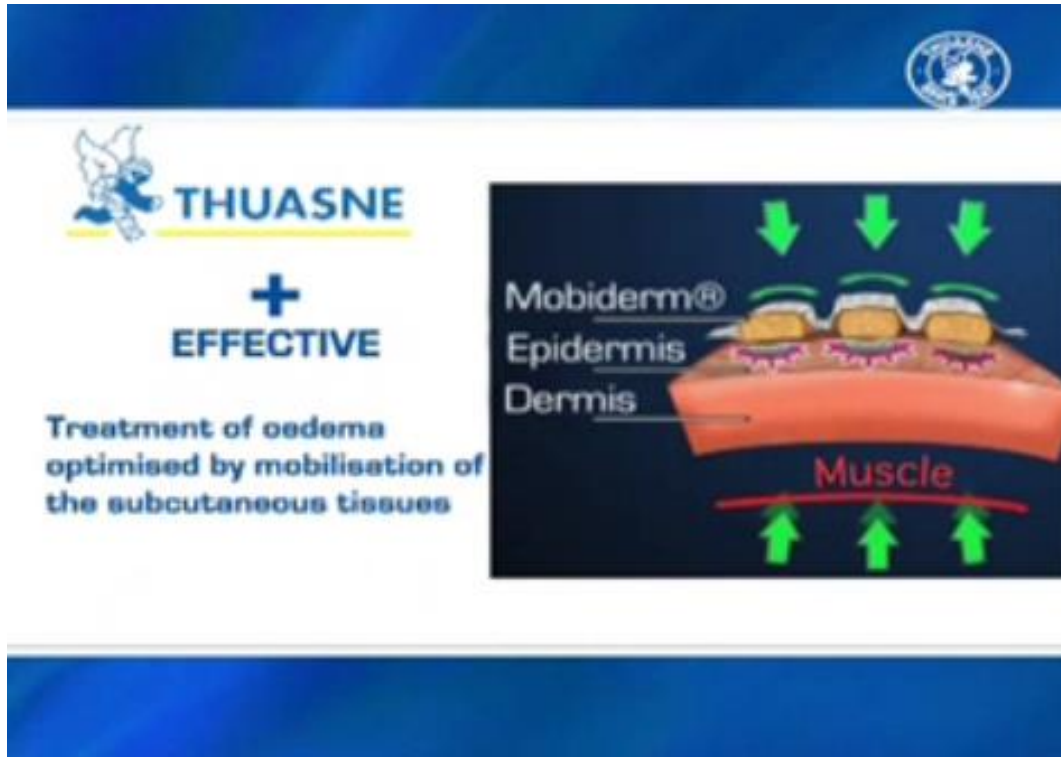
THUASNE logo

Available in 4 different sizes and 4 different lengths.
(16 different sizing options)

[Click here to see the Mobiderm autofit sock and video](#)



How does **MOBIDERM**[®] work?



Through the use of pressure on the **Mobiderm** a **shear effect** (foam squares move down and across simultaneously) is created. This **shear effect** mobilises the skin which pulls on the collagen fibres stimulating the opening of the initial lymphatic vessels.

It also creates a **pressure differential** in the interstitial tissues.

ABOVE: Image showing Mobiderm in sheer effect. Green arrows indicate the areas of pressure. Muscle contraction and compression on Mobiderm.

How does **MOBIDERM**[®] work?

Most products just compress which reduces the rate of filtration.

Mobiderm not only **reduces filtration** it also **stimulates the lymphatic system**. The initial lymphatic vessel (figure 1) Is stimulated by the sheer effect of the Mobiderm opening to draw in the odematis fluid (figure 2) this starts the peristaltic reaction in the collector lymph vessels (figure 3) and lymphangion stimulation as the system is loaded (figure 4).

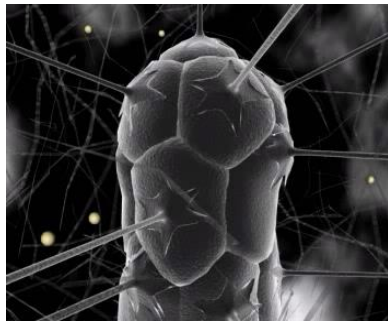


Figure 1

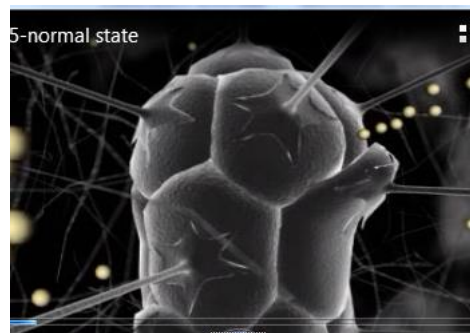


Figure 2

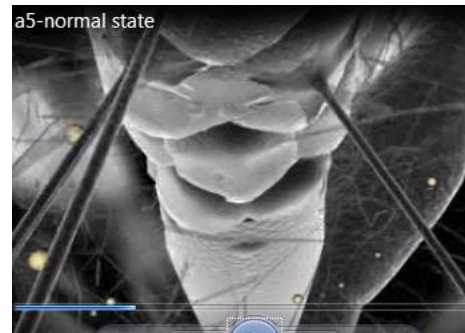


Figure 3

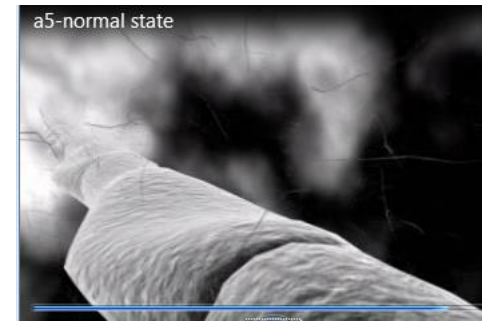


Figure 4

RESULTS

18.42% total reduction of lower limb/foot



Above: 30/05/2019



Above: 10/06/2019



Above: 30/05/2019



Above: 10/06/2019



Above: 30/05/2019



Above: 10/06/2019

POST TREATMENT

- Client was able to don shoes he hadn't worn since pre accident,
- Better mobility,
- Reduced pain,
- He was really grateful and extremely pleased with the results.



Client (above) happy to be back in shoes not worn pre-accident 4 years prior.

MOBIDERM®

distributed by

Medical Rehab Pty Ltd
Port Melbourne, Australia

Ph :+61 432 847 576

Ph: +61 413 311 397

info@medicalrehab.com.au

www.mobiderm.com.au



MOBIDERM®

manufactured by

Thuasne

www.thuasne.com

