

LEGENDS FLASHBACK

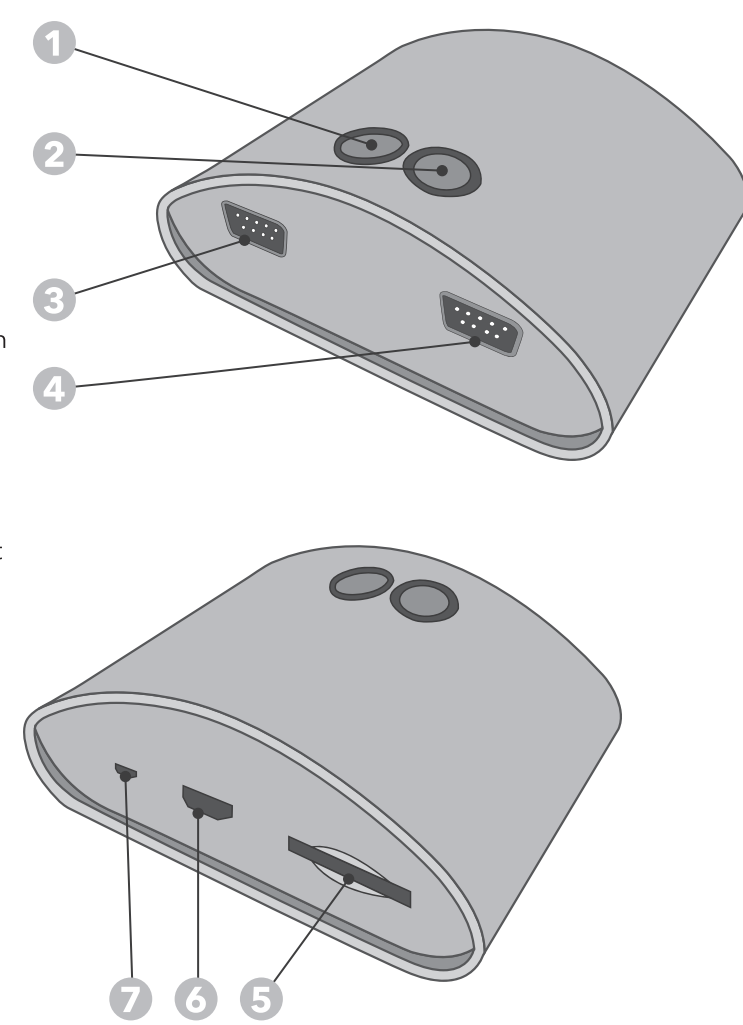
Instruction Manual

MODEL NO.: FB8650

Legends Flashback Game Console Appearance and Key List

The image below shows the location of the connectors and buttons. Each function is outlined below the image.

- Power ON/OFF**
Turn the game console's power ON/OFF.
- MENU**
Press the button to display in-game menu.
- First Player Game Controller Jack**
Game controller connected to this jack controls one player games and controls the first player in 2-player games.
- Second Player Game Controller Jack**
Game controller connected to this jack controls the second player in 2-player games. Note that some two player games alternate use of the first player controller.
- SD Card Slot**
Slot for optional SD card.
- HDMI Output**
Plug the HDMI cable into this port, then into your television.
- Micro-USB Adaptor Jack**
The power adaptor plugs into this port, then into your AC outlet.



- NOTE**
- Must use the Micro-USB adaptor included as the power supply to the console.
 - Do not connect the Micro-USB adaptor to a power input other than the above specifications.
 - Micro-USB adaptor is not a toy.
 - The socket outlet should be installed near the equipment and should be easily accessible.

What do I do when the power supply is not working?

You might be using the wrong Micro-USB adaptor. Please use the one included in the package, which is rated for 5V/1A.

Micro-USB Adaptor Specification
INPUT: 100V-240V AC/50-60HZ
OUTPUT: 5V/1A

How to connect the console to a HD TV?

Connect the game console to TV using the HDMI cable.
Press the power button on the game console after configuring the TV input to the selected HDMI source.

NOTE
Display results will vary by TV. Consult your TV's manual to adjust Brightness, Sharpness, Contrast, Aspect Ratio, and other features for best display results.

Wired Game Controller Appearance and Key List

The image below shows the location of the connectors and buttons. Each function is outlined below the image.

- START**
Press the button to start the game and press it again to pause in some of the games.
- Directional Pad (D-Pad)**
Directional Pad for game playing.
- A Key**
Game key A
- B Key**
Game key B
- C Key**
Game key C
- X Key**
Game key X
- Y Key**
Game key Y
- Z Key**
Game key Z



How Do I Use Wired Controllers?

What are the two controller ports on the console for?

These ports are for the wired controllers.
These ports are also compatible with original Sega Genesis wired controllers.

How do I connect wired controllers?

- For 1 player games:**
Connect a wired controller to the left controller port.
- For 2 player games:**
Connect a second wired controller to the right controller port for player two.

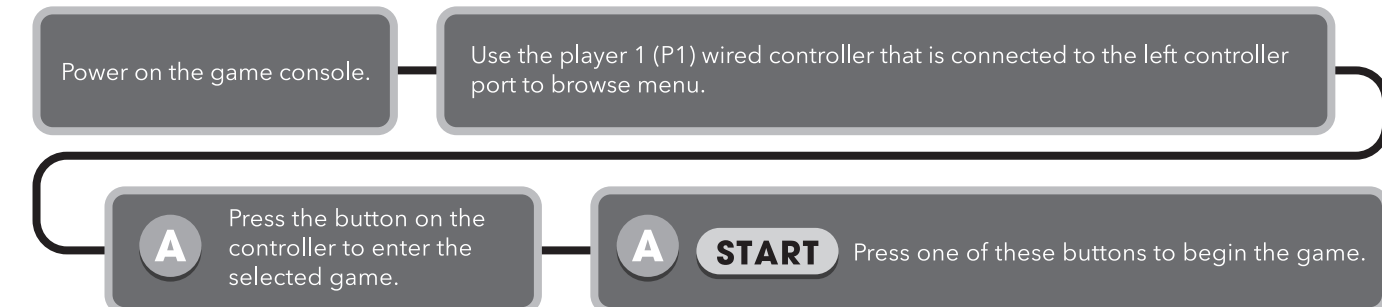
NOTE: Some two player games alternate use of the player one controller.

What do I do when the controller is not working?

1. If you only have a controller plugged into the P2 socket, turn off your console and connect the controller to the P1 (left) controller port. Then, turn on the console and try again.
2. If you have a controller plugged into the P1 socket, please turn the console off and restart.

(Purchase additional accessories at www.atgames.us)

HOW DO I START PLAYING?



How do I play two-player games?

1. Follow the steps in section "How do I start playing".
2. Press **↑** or **↓** on the D-Pad to select a two player game.
3. **START** Press START on the P1 controller to start playing the game.

How do I go back to game menu while playing the game?

Press the button to display in-game menu, select **QUIT GAME** to go back to the game menu page.

How do I rewind the game?

Press and hold the Left button on the D-Pad and press START with P1 controller.



Using SD Card

How to upgrade the console via SD card?

1. Insert SD card into your PC.
2. Download firmware from AtGames Flashback Zone.
3. Change the file name to arcade_update.img.
4. Place the file on the SD card.
5. Insert the SD card into your console, then turn the console on.
6. The request page will pop up once the console is turned on. Choose YES to start upgrading.
7. The console will automatically restart after the update is applied.

NOTE:
1. The request page will pop up again when the console restarts. Choose NO to return to the Main Menu.
2. Don't remove the SD Card when the console is being upgraded.
3. This product is compatible with SD cards that are 16 GB (Gigabyte) or less.

Safety Notice

Do not submerge the game console in water or expose it to extreme heat or to strong magnetic fields. Doing so may cause permanent damage to your game player.
Always use a dry towel to clean the game console and controllers.
Transformers are suitable for indoor use only.
Transformers and power supplies for toys are not intended to be used as toys, and the use of these products by children shall be under the full supervision of parents.

Battery Safety

- Never try to short-circuit the battery terminals.
- Rechargeable batteries are to be removed from the toy before being charged.
- Rechargeable batteries are only to be charged under adult supervision.
- Do not charge non-rechargeable batteries.
- Batteries are to be inserted with the correct polarity as indicated inside the battery compartment.
- Do not mix old and new batteries. Do not mix batteries of different types: standard (carbon/zinc), alkaline, or rechargeable (nickel-cadmium).
- Remove batteries during long periods of non-use.
- Always remove dead batteries from the product.
- Dispose of batteries safely. Do not dispose of this product or any batteries in a fire.

GAME LIST

1942™ Ach-Fencer Cybernetick Hyper Weapon Astro Fantasia Boss Dudes vs. Dragon-ninja Break Thru BurgerTime Burnin' Rubber Champions World Class Soccer Cluster Buster Commando™ Crude Buster Dorwin 4078 DQ2 DQ2™ Disco No.1 Edward Randy, The Cliffhanger Express Raider	Fighting Ice Hockey Forgotten Worlds™ GALAGA™ Ghosts'n Ghosts™ Heavy Barrel HyperDyne Side Arms™ Joe & Mac: Caveman Ninja Joe & Mac Returns Judge Dredd® Lock 'n' Chase MAPPM™ Mega Man™ Mega Man II™ Melkyu Hunter G PHELOS™ Pirate Ship Higamaru™ Pro Bowling	Pro Tennis RALLY-X™ Roolin' Tootin' Scrum Tty Secret Agent/Sly Spy Shoot Out Side Pocket SKY KID™ Strider™ Super BurgerTime Super Doubles Tennis Super Pool III Super Rical Darwin Super Street Fighter II: The New Challengers™ Terranean Tetra® Tournament Pro Golf
--	---	---



AtGames
AI Games Digital Media, Inc.
www.atgames.net
All rights reserved.

DATA EAST and DATA EAST (Bogot) are trademarks in United States and other countries or registered trademarks in European Union and Japan of GAMECO Corporation.
Copyright © 1993-2018 Throughback Entertainment Inc. All Rights Reserved.
LOGO DESIGN & REGISTERED TRADE MARK & ORIGINATOR AS ALL RIGHTS RESERVED. USED UNDER LICENSE.

© AtlGame LICENSED FOR USE BY ATGAMES.	© Capcom LICENSED FOR USE BY ATGAMES.
1942 © CAPCOM CO., LTD. 1984, 2018 ALL RIGHTS RESERVED. Commando © CAPCOM CO., LTD. 1985, 2018 ALL RIGHTS RESERVED. Forgotten Worlds © CAPCOM CO., LTD. 1988, 2018 © CAPCOM U.S.A., INC. 1988, 2018 ALL RIGHTS RESERVED. Ghosts'n Ghosts © CAPCOM CO., LTD. 1988, 2018 ALL RIGHTS RESERVED. HyperDyne Side Arms © CAPCOM CO., LTD. 1988, 2018 ALL RIGHTS RESERVED.	High Man © CAPCOM CO., LTD. 1985, 2018 ALL RIGHTS RESERVED. Mega Man © CAPCOM CO., LTD. 1987, 2018 © CAPCOM U.S.A., INC. 1987, 2018 ALL RIGHTS RESERVED. Pirate Ship Higamaru © CAPCOM CO., LTD. 1988, 2018 ALL RIGHTS RESERVED. Super Street Fighter II © CAPCOM CO., LTD. 1993, 1995, 2018 © CAPCOM U.S.A., INC. 1993, 1995, 2018 ALL RIGHTS RESERVED.
TERRA © 1993-2018 TETRA HOLDING. TERRA (LOGO, TYPE, NAME, DESIGN AND TERRA) ARE TRADEMARKS OF TETRA HOLDING. THE TERRA TRADE MARK IS OWNED BY TETRA HOLDING. REGISTERED TO THE TETRA COMPANY. TERRA GAME COVER BY ALEXIS TATENO. REGISTERED TO THE TETRA COMPANY. ALL RIGHTS RESERVED.	DE DODGEMIERE BANDANAMARCO Entertainment Inc. GALAGA © 1981 BANDANAMARCO Entertainment Inc. GALAGA'S LEGEND © BANDANAMARCO Entertainment Inc. SKY KID © 1981 BANDANAMARCO Entertainment Inc. PHELOS © 1981 BANDANAMARCO Entertainment Inc. Licensed by BANDANAMARCO Entertainment America Inc.

With certain TV models (Samsung PN42C450, SONY KDL-32EX500, Samsung LN32B40R3F), sounds outputs may abnormally while playing the certain games. If this happens, try the console on a different display or return the console to the point of purchase.

FCC Statement

This equipment has been tested and found to comply with the limits for a Class B digital device, pursuant to Part 15 of the FCC Rules. These limits are designed to provide reasonable protection against harmful interference in a residential installation. This equipment generates, uses and can radiate radio frequency energy and, if not installed and used in accordance with the instructions, may cause harmful interference to radio communications. However, there is no guarantee that interference will not occur in a particular installation. If this equipment does cause harmful interference to radio or television reception, which can be determined by turning the equipment off and on, the user is encouraged to try to correct the interference by one or more of the following measures:

- Reorient or relocate the receiving antenna.
- Increase the separation between the equipment and receiver.
- Connect the equipment into an outlet on a circuit different from that to which the receiver is connected.
- Consult the dealer or an experienced radio/TV technician for help.

Changes or modifications not expressly approved by the party responsible for compliance could void the user's authority to operate the equipment.

The content of this document is subject to change without notice.