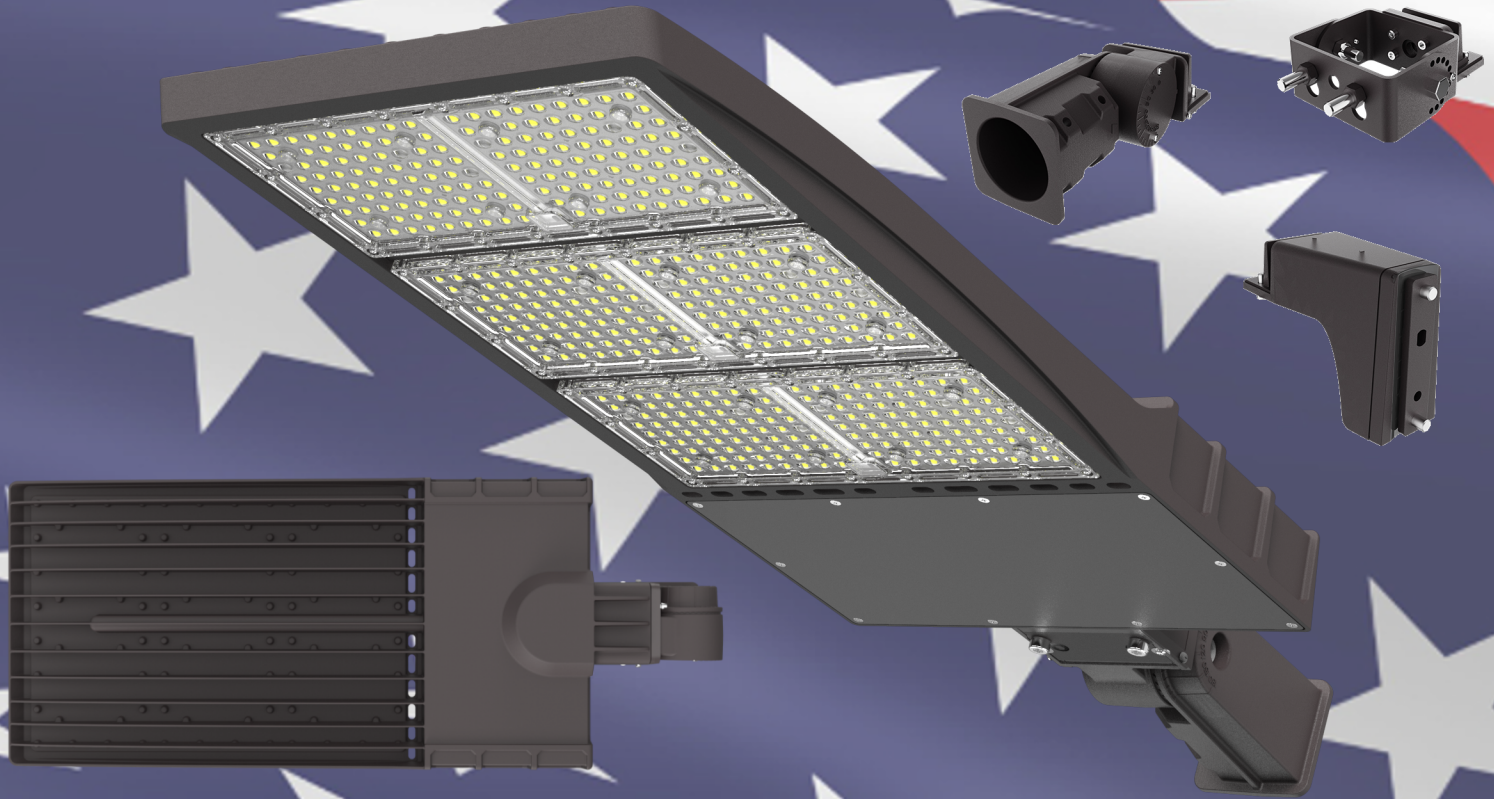




# 500W ULTIMATE LED SHOEBOX



Part Number: ALS-SBHP-500W-5K-III-BZ  
 Power: 500W  
 Input Voltage: AC100-277V  
 Efficiency: 130 Lumens per Watt  
 Lumens: 65,000  
 Color Temp: 5000K  
 Beam Angle: Type III  
 CRI: Ra>70  
 Weight: 25.22lbs W/O Mounting  
 Surge Protection: Dual Stage 20KV  
 Housing: Aluminum w/Dark Bronze Powder Coat

Certifications: cUL Listed - DLC Premium 4.4  
 Rating: IP65 Weatherproof / IK10  
 Operating Temp: -40°~113°F  
 LED Chip: Seoul Semiconductor SMD  
 Mounts: Slip-fit / Adjustable Arm / Trunion  
 Dimensions: L28.98"\*W13.27"\*H3.31"  
 Material: Die-Cast Aluminum  
 Surface Treatment: Anodic oxidation  
 Cooling: Heavy-duty Heat-sink Head  
 Warranty: 7 Years  
 Option: Available in White Powdercoat Finish



- Outperforms 1500W Metal Halide Bulb and Ballast.
- NEW!! higher lumen output 130lm/w 65,000 Lumens
- Tough Vandal-proof Design. IK10 Rated
- No upward light loss or brightness deterioration like Metal Halide.
- Best quality 20KV Dual Stage surge protection factory installed.
- Tough powder coat finish and IP65 Weatherproof rating.
- Ultra long 7-Year replacement warranty.

**Do you have a large lighting project? Call us for volume discounted pricing...**



by Vera Lucé Lighting, Inc.



18541 Old US Highway 441 Tavares, FL 32778 (321) 203-4869  
 www.AmericanLightingSystems.com / sales@americanlightingsystems.com

91027290