

**S-BOX™**

INSET/REBATE INSTALLATION

# HOW IT'S MADE



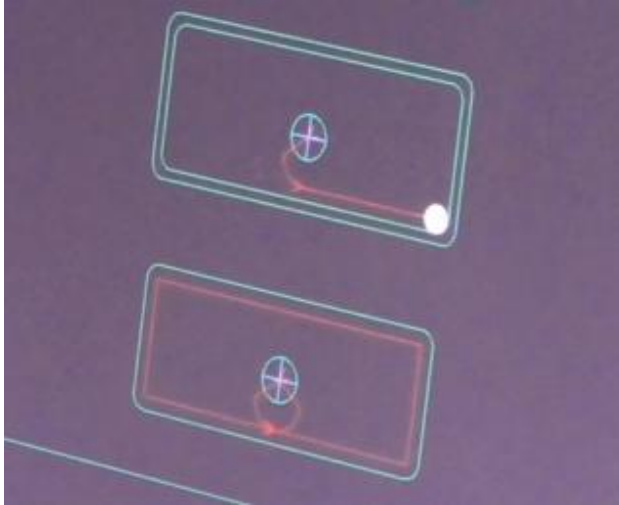
With our thanks to The Cambrian Granite Company

**ANY S-BOX™ THAT IS TO BE INSTALLED IN ITS HIDDEN “CHAMELEON” MODE NEEDS THE INVOLVEMENT OF THE STONE FABRICATOR AND HIS CUTTING TOOLS . . .**



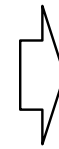
**. . . IN EXACTLY THE SAME WAY THAT ANY STONE COUNTER IS PRE-CUT FOR ITS SINKS, TAPS, FAUCETS, DISPENSERS OR HOB**



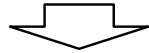


**FOR 30mm MATERIAL (OR THICKER) THE DIMENSIONS AND THE 20mm DEEP REBATE REQUIRED ARE ENTERED INTO A COMPUTER CONTROLLED ROUTER MACHINE . . .**

**. . . AND THE TOOL FOLLOWS THE CUTTING ROUTE AND INSTRUCTIONS IT IS GIVEN**



**THE CENTRE POINTS ARE DRILLED FIRST**

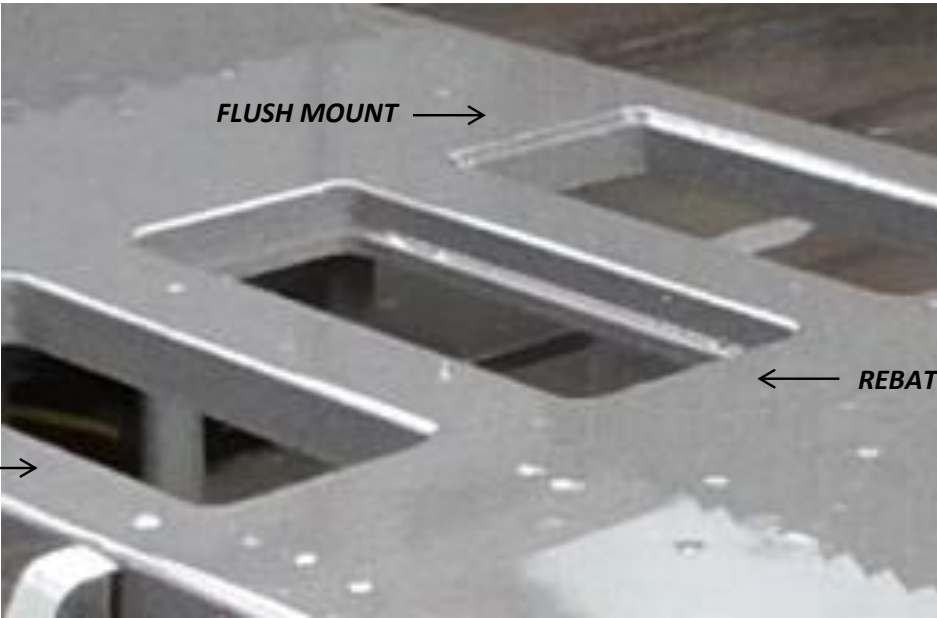
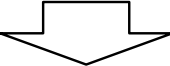


**FOLLOWED BY THE CUTTING OF THE HOLE ITSELF**





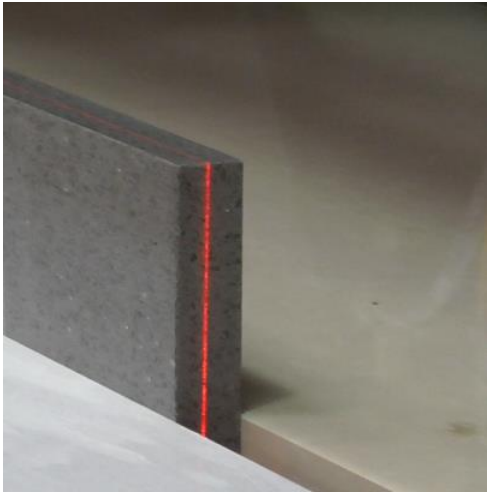
**THE TOOL THEN RETURNS TO THE WORKTOP TO CARRY OUT ITS SECOND GRINDING PROCESS AND CREATES THE REBATE (at -20mm DEPTH) FOR THE S-BOX™ COLLAR TO SIT ON LATER.**



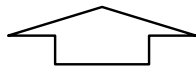
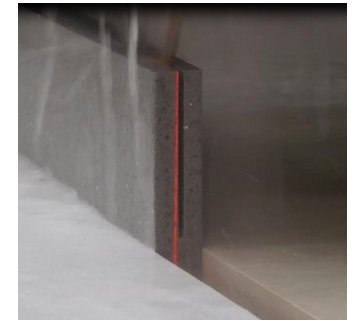
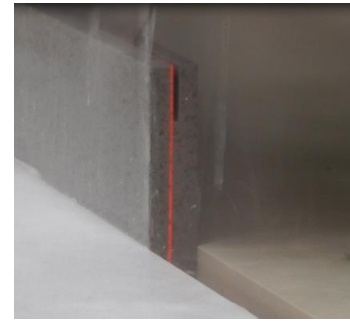
**SURFACE MOUNT** →  
(ONLY A STANDARD RECTANGULAR HOLE IS REQUIRED FOR THIS)

**FLUSH MOUNT** →

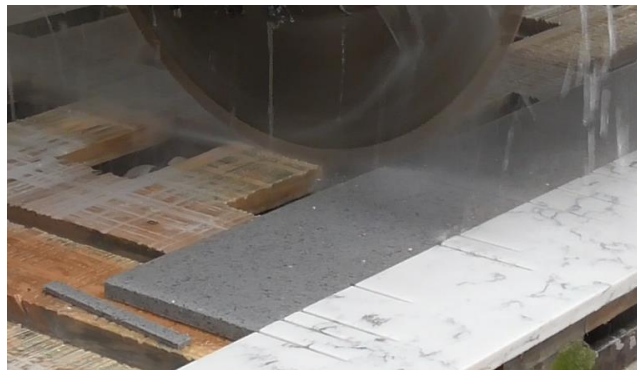
← **REBATED**



**THE CUSTOM TOP IS MADE BY 'SLICING' AN OFF-CUT PIECE OF THE COUNTER MATERIAL**



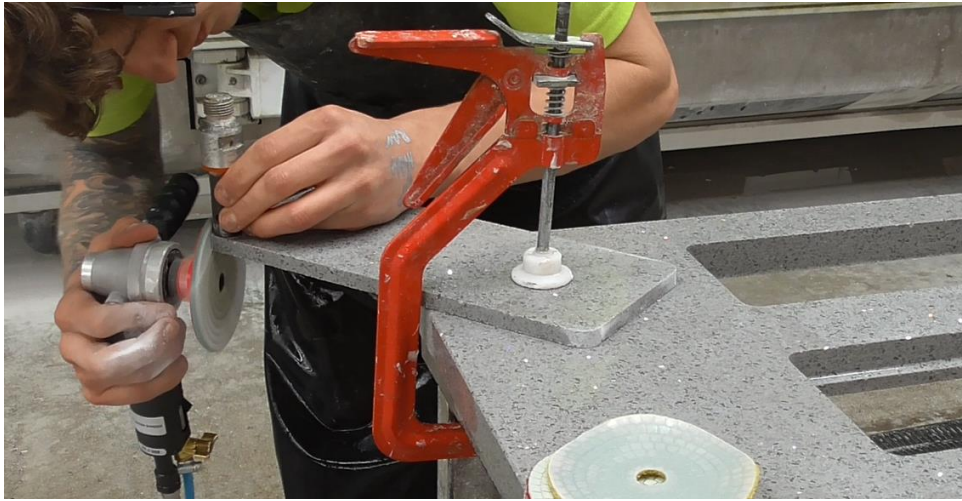
**THE CIRCULAR SAW FOLLOWS A LASER LINE, AND CAREFULLY CUTS THE THICK MATERIAL DOWN INTO THE 12mm THICKNESS REQUIRED. THIS IS DONE IN A SERIES OF 8-10 PASSES TO ENSURE THE INTEGRITY OF THE STONE.**



**CROSS-CUTTING CREATES THE FINAL SIZE . . .  
READY FOR THEIR CORNERS TO BE ROUNDED.**







SEE FULL INSTALLATION GUIDE  
FOR CORNER RADIUS INFO ☺

**THE CORNERS ARE TYPICALLY DONE BY HAND TO ENSURE THAT THE CUSTOM TOPS WILL NEATLY MARRY WITH THE INTERNAL RADIUS OF THE HOLES. THE EXPERIENCE AND SKILL OF THE WORKTOP SUPPLIER ENSURES THAT EVERYTHING WILL FIT BEAUTIFULLY ON SITE.**

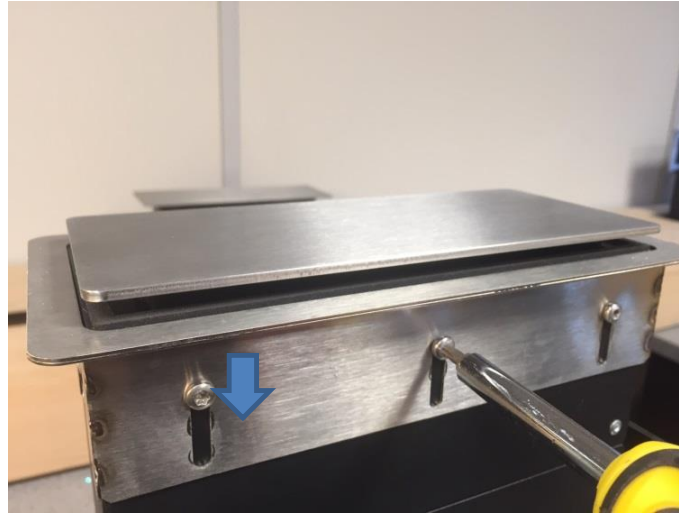
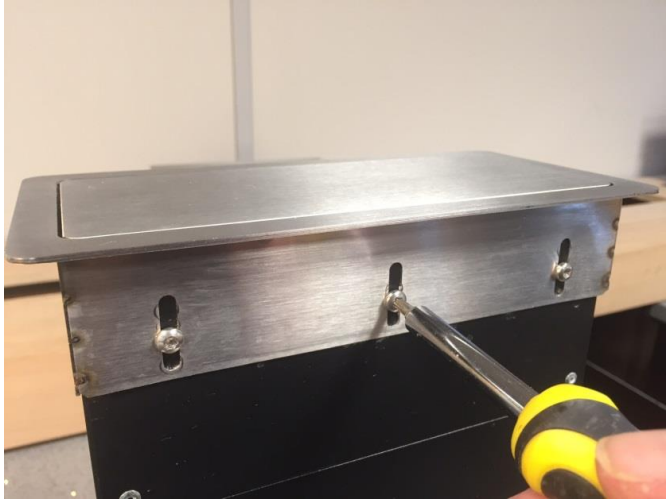


**WITH HOLES AND TOPS NOW READY, THE COUNTERTOP CAN GO TO SITE . . . FOR THE S-BOX™ UNITS TO BE INSTALLED! ☺**

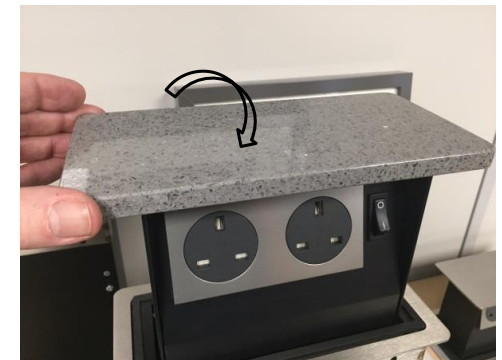




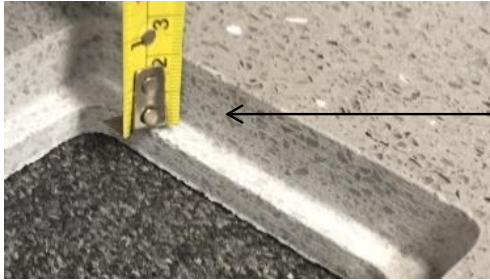
1. LOOSEN THE MOUNTING COLLAR AND LOWER IT DOWN IN ITS SLOTS.



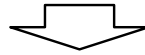
2. REMOVE THE STEEL TOP COMPLETELY AND *LOOSELY* PLACE THE CUSTOM TOP ONTO THE UNIT INSTEAD



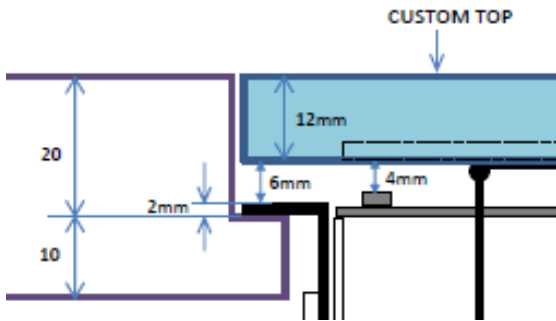




**3. IN READINESS FOR THE UNIT'S INSERTION ONTO ITS PRE-PREPARED 20mm DEEP REBATE, THE COLLAR CAN NOW RE RE-TIGHTENED TO CREATE THE SAME 20mm DIMENSION (FOR TOP + COLLAR COMBINED)**



***THIS KEEPS THE GAP REQUIRED FOR THE PRESS-DOWN "CLICK" OF ITS OPERATION***



***AT THIS POINT THE INTERNAL COUNTERBALANCE IS ADJUSTED FOR THE EXTRA WEIGHT OF THE TOP.  
\*\* PLEASE REFER TO THE FULL INSTALLATION GUIDE\*\****

**4. THE UNIT CAN NOW BE LOWERED INTO ITS REBATED HOLE AND THE NEW CUSTOM TOP FIXED IN POSITION WITH DOUBLE-SIDED TAPE**





IN NATURE , CAMOUFLAGE IS A MATTER OF SURVIVAL  
IN DESIGN, IT'S A MATTER OF STYLE

S-BOX™