

### Product Description

Every piece of Hourwall's product line has been precisely cast from real wood, brick, cinder block and concrete. All pieces used are carefully chosen for their rich texture, shape, and size. Colours are then chosen and added into the process to provide the realistic and rich details. This technology is combined into a panel system, making it quick and easy to install. The high-density polyurethane used to create our panels allows for a very lightweight panel with the look and feel of the real thing. Hourwall products are made of 98% closed-cell Class A fire-rated polyurethane, and a highly-durable titanium oxide finish. We have no testing data to support use in an underwater or heavy moisture environment.

### Materials

**HIGH-DENSITY POLYURETHANE WITH A PAINT FINISH**  
All panels are produced with ProTek poly, which provides a Class A fire-rating.

**FLAMESPREAD: 20 | SMOKE DEVELOPED: 350 - 450**

### Limitations

Hourwall products don't add to the structural load bearing capacity of the substrate to which it is applied. All products have been designed for wall installation only, and should not be applied anywhere that they will be walked or sat on.

### Applications

Interior only: facades, walls, ceilings, features and other non-load bearing surfaces.

### Advantages



Install Friendly



Non-Toxic



Made in North America



Lightweight



Hand-Crafted

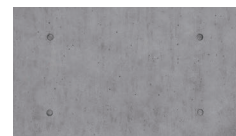


Class A



Most Realistic

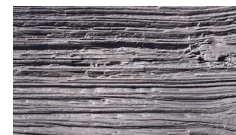
### Collections



URBANCONCRETE



CLASSICBRICK



BARNWOOD



CINDERBLOCK



FAUXBEAMS

### Available Colours

#### URBANCONCRETE



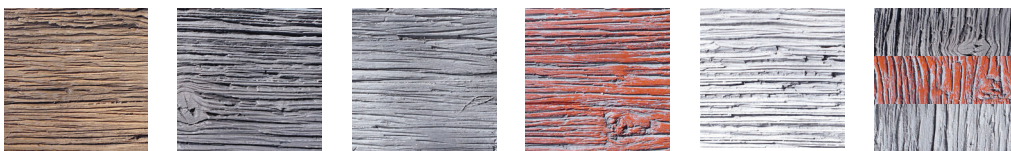
Industrial Grey 'Circles'   Industrial Grey 'Flat'   Washed Grey 'Circles'   Washed Grey 'Flat'   Rustic Grey 'Circles'   Rustic Grey 'Flat'   Onyx Grey 'Circles'   Onyx Grey 'Flat'

#### CLASSICBRICK



Antique   Old Italy   Vintage White   Cellar Brown   Reclaimed Red

#### BARNWOOD



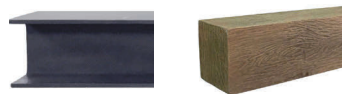
Worn Leather   Aged Elm   Weathered Grey   Barn Red   White Wash   Random Blend (Weathered Grey, Barn Red, Aged Elm Combo)

#### CINDERBLOCK



Traditional Washed Grey   Traditional Industrial Grey   Modern Washed Grey   Modern Industrial Grey

#### FAUXBEAMS



Metal I-Beam   Wood Beam/Mantel

### Product Dimensions

PRODUCT	LENGTH	HEIGHT	THICKNESS	COVERAGE/PANEL
24" x 48" URBANCONCRETE	48"	24"	½"	8 sq. ft.
48" x 48" URBANCONCRETE	48"	48"	½"	16 sq. ft.
CLASSICBRICK	45"	23½"	½"	7⅓ sq. ft.
BARNWOOD	48"	6"	½"	2 sq. ft.
CINDERBLOCK	48"	48"	1"	16 sq. ft.
FAUXBEAM Metal I-Beam	48"	8½"	6"	N/A
FAUXBEAM Beam/Mantel	48", 60", 96"	8"	8"	N/A
(inside dimensions of Wood-Beam = 6 ¾" w x 7" h)				

### Box and Pallet Dimensions

PRODUCT	BOX LENGTH	BOX HEIGHT	BOX THICKNESS	BOX WEIGHT
24" x 48" URBANCONCRETE	50"	26"	3"	20 lbs.
48" x 48" URBANCONCRETE	50"	50"	3"	40 lbs.
CLASSICBRICK	50"	26"	3"	20 lbs.
BARNWOOD	50"	12"	8"	12 lbs.
CINDERBLOCK	50"	50"	3"	40 lbs.
PRODUCT	PALLET LENGTH	PALLET HEIGHT	PALLET THICKNESS	PALLET WEIGHT
24" x 48" URBANCONCRETE	50"	48"	95"	1050 lbs. (50 boxes)
48" x 48" URBANCONCRETE	50"	48"	95"	1050 lbs. (50 boxes)
CLASSICBRICK	50"	48"	106"	1500 lbs. (50 boxes)
BARNWOOD	50"	48"	106"	600 lbs. (48 boxes)
CINDERBLOCK	50"	48"	95"	1050 lbs. (50 boxes)

## Hourwall Properties

FEATURE	UNIT	VALUE
ASTM E-84/UL 723	Flame Spread Average: 20	Smoke Density Average: 350 - 450
ASTM D1622	Molded Core Density	14 pcf
ASTM D1621	Compressive Strength	11 to rise, 310 psi
ASTM D790	Flexural Strength	11 to rise, 700 psi
ASTM D2240	Shore D Hardness	37

## Recommended Finishing Products

The following products are recommended with Hourwall products. See install instructions for details on how/when to use.

- We recommend a drill and 1" – 1½" screws
- If adhesive is needed, we recommend Titebond TiteGrab or Gorilla Glue
- Approx. (1) 10.3 oz. tube/40 square feet (using ¼" bead over ¾ of the length of the board)
- 1" Air-Powered Nail (Brad Nail) if air (pneumatic) nail gun is being used with adhesive
- Use Stone Finish textured caulking to cover any unwanted screws, gaps, seams, etc.

## Care and Cleaning

Because of the high-grade coating formulation used, all Hourwall panels are can be easily cleaned with a duster or a slightly-damp wash cloth. Do not use anything acidic, rough or any type of chemical to clean. This could damage the finish coating and potentially the polyurethane. Some tougher debris/stains can be eliminated with water and a light brushing with a soft bristle brush. Always trial a small area first to ensure the procedure is working and to check for colour fastness.

If major damage happens, the Stone Finish caulking or Paint Touch-Up Kit can be used.

## Warranty

### LIMITED WARRANTY TO ORIGINAL PURCHASER ONLY

Subject to the terms, conditions, and limitations stated in our full warranty, InStone provides this limited warranty only to the person or entity that originally purchased (the "Original Purchaser") any Hourwall panels (the "Product") from InStone.

InStone warrants that the Product will not have excessive warping, peeling, flaking, blistering, or corrosion solely as a result of defects in materials or workmanship (the "Warranty") for a period of five (5) years full warranty from the original date of purchase (the "Warranty Period"). Some peeling, flaking, or blistering may occur if the product is installed in a fashion or environment not recommended by InStone.