

Finitec finishes Application guide



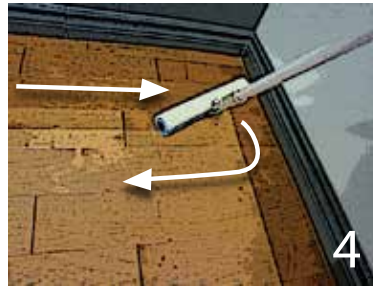
Soak the applicator with finish and apply carefully on the edges of the surface to finish.



Pour a line of finish directly on the floor following the wood boards. The size of the line will get smaller as the surface to cover decreases. Repeat if necessary.



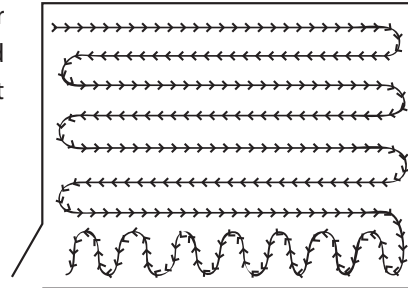
Soak the applicator with finish and start the application following the wood boards with a 45° angle in order to allow the finish to overflow on the unfinished part.



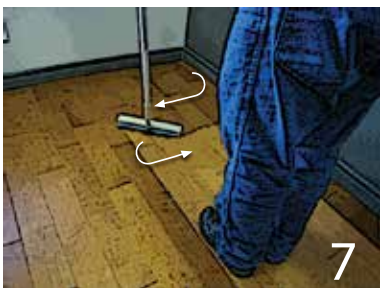
When at the end of the surface, do not lift the applicator and continue the movement the other way for about 12 inches (30 cm).



Before continuing the other way, smooth out marks and lines by lifting the applicator at the end of the movement.



Follow the same procedures for the rest of the surface.



At about 15 to 30 inches (38 to 76 cm) of the wall, turn 90° and apply the finish the opposite way of the wood boards. Bring the finish back towards you while moving to an unfinished area.



As you are not following the wood boards anymore, don't forget to smooth out marks and lines.



Using the applicator, collect the finish surplus from the surface and end the application.



Smooth out gently the marks and lines towards the finish area.