

Contents:

Body care	75
Boosters vs Serums & Treatments	91
Cleanse.....	36
Electrotherapy Products.....	80
Essential Skin Treatment Procedures	95
Exfoliate	44
Food for Skin	4
Free Radicals and Anti-oxidants	8
Frequently asked questions	97
Fruits.....	15
Hydrate	64
Natural Moisturising Factor.....	10
Other active ingredients.....	22
pH balance of the skin.....	9
Prescribing SKNLOGIC Products	87
Protect	70
Skin Classifications	11
Skin Mist	72
Sowing good seeds initiative	93
The Philosophy.....	2
The Structure of the Skin.....	5
Tone.....	42
Transepidermal water loss (TEWL)	10
Understanding reactions in the skin.....	90
Why SKNLOGIC?	2

The Science of Beautiful Skin

The Philosophy

At SKNLOGIC we know that your skin matters, which is why we have gone through extraordinary lengths to ensure that our cosmeceutical skincare products are safe, cost-effective and show visible results. Our primary focus is Science, Knowledge and Nature, and because of this we have a synergistic approach to science and nature and work to fuse these two complementary concepts to create effective adaptive product formulations.

Karin Theunissen the founder of SKNLOGIC decided to rethink skincare and create functional and effective solutions for your skin. She wanted to create a skincare solution that was not only effective and result-orientated, but was also affordable enough that it could be accessible to most clients.

Based on the skin classification of oily skin, dry skin and balanced to combination skin, SKNLOGIC aims to treat each specific skin condition with the antioxidant and powerful nutritional benefits of fruit extracts and other active ingredients sourced from the most innovative laboratories around the world.

The perfect fusion of nature and science, SKNLOGIC cosmeceutical skin care collection offers you powerful fruit-based formulas to regenerate protect and restore the skin.

Our skin has the ability to heal and restore itself, SKNLOGIC provides the skin with the vital minerals and nutrients it needs to function at its optimum.

Why SKNLOGIC?

- SKNLOGIC offers products that are affordable and safe as well as effective.
We believe that effective skin care should be accessible to everyone, we believe in the future of the industry and as we all feel the economic burden over the last few years, we realised that it was necessary to give the industry a product that is affordable to their clients but is still result orientated.
 - We choose packaging that has the lowest cost possible to ensure that most of the cost of the product is made up out of the active ingredients in the product.
 - Sknlogic is manufactured locally, which means saving on transport costs, customs duties and the ever weakening Rand does not affect the product in a major way.
 - SKNLOGIC is part of Logica beauty supplies. Because of this structure, there are no overhead costs such as salaries, rent etc. included in the product price.
 - Our passion for the skin and the industry means that we are not in it to make a profit, but to be involved in the process, learn new technologies and be a part of the community.

- SKNLOGIC is a cosmeceutical range of products.
Cosmeceutical products have a more physiological effect than cosmetic products as they contain antioxidants, exfoliators and other intercellular ingredients that are necessary to support the natural structure of the skin. SKNLOGIC facilitates an active process of reversing the signs of damage in the skin.
- Ethical raw materials. SKNLOGIC products does not contain mineral oil, parabens, formaldehyde, sulphates or artificial colourants. Wherever possible we try and use nature-identical ingredients.
- Fragrance has the ability to evoke strong emotional reactions, studies have shown that light uplifting fragrances can improve our mood and sense of well-being. For this reason we wanted to include a fruit fragrance in the products. When we use fragrance in our products, we use Flavours, which is a nature-identical aroma that does not contain any of the 36 known allergens that can be found in perfume. Only the body products and selected other products has these flavours included.
- SKNLOGIC is a privately owned company managed by people with a passion and drive for the beauty industry, driven first by education and research. We take pride in being true pioneers in the industry, never wavering on our initial vision of skin health and the skin health professional.
- International market trends and technological innovations initiate and drive product development. We are continuously upgrading formulations to ensure that we utilise the most stable and effective combination and concentration of active ingredients in our products. We use the maximum concentration of key active ingredients and use the highest grade of quality ingredients from around the world.
- We have not taken part in animal testing.
- Specialised treatments that will facilitate skin repair.
- SKNLOGIC skin care consultation wheel will simplify the consultation stage and prescribing products to your client.
- SKNLOGIC offers a solution for every skin type, gender and age.
- We have initiated the Sowing Good Seeds project, where we help with the upliftment of under privileged communities in Africa.
- We source the best active ingredients from various superior laboratories based all over the world. We utilise both biotechnology and Phytoceutical ingredients.

Food for Skin

Our skin thrives on the same nutrition that fuels our body, and fruit provides these vital antioxidants, vitamins and nutrients. SKNLOGIC aims to provide a skin care solution that works with the skin's biological processes to bring about change in the skin.

Our formulas boast fruit extracts and nourishing ingredients from nature infused with quality actives to increase the skin's health.

Benefits of fruit extracts:

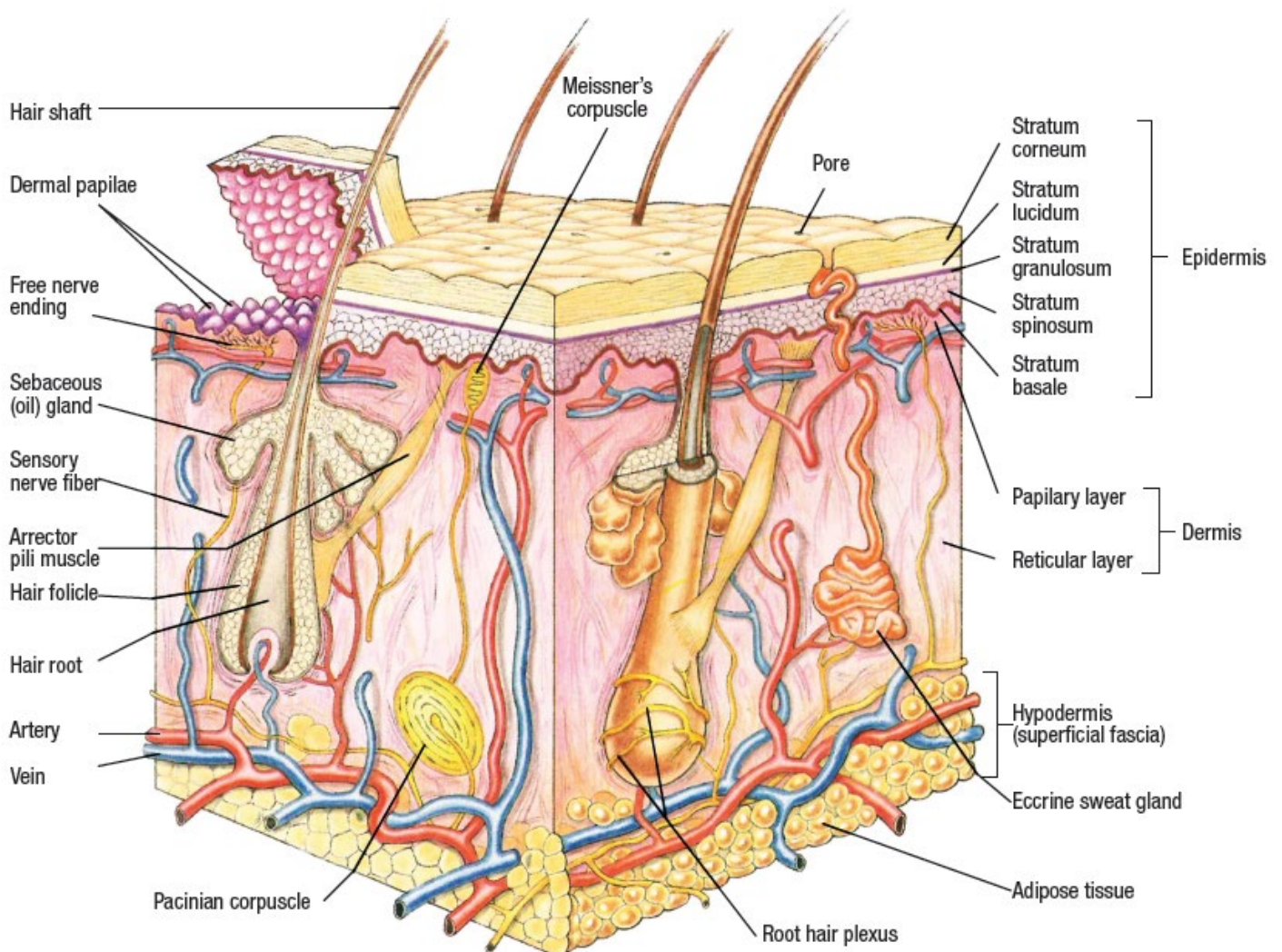
- Rich in Vitamins (varies from Vitamins A, B, C, E and K)
- Rich in vital minerals such as Zinc, Calcium, Copper and Potassium (which is known as the youth mineral).
- Antioxidants inhibit the harmful effects of free radicals
- Alpha Hydroxy Acids improve the structure and function of the skin.
- Certain fruits contain proteolytic enzymes that work with the biological processes of the skin to remove dead skin cells and promote new cell growth.
- Carbohydrates offer a trans-epidermal water loss regulating activity.
- Contains essential fatty acids required for the health of cell membranes and to restore barrier function.
- Contains Phytosterols that encourage new collagen production.
- Contains the rejuvenating benefits of Amino Acids.
- Each fruit has a different purpose for the skin.

Apart from these fruits that we incorporate in the range, Sknlogic contains a wide range of active ingredients to maximise the effect of the product and ensure visible results.

The Structure of the Skin

Skin Facts

- Largest organ in the body.
- Approximately 4kg in the average adult.
- Covers nearly 2 square meters.
- 1,5 to 4 millimeters thick (depending on the location measured).
- Thinnest on the eyelids and behind the ears.
- Men have thicker skin than women.
- Dermis thickens gradually until fourth decade and then thins again.
- Every square centimeter of the skin contains approximately 70cm of blood vessels, 55cm of nerves, 100 sweat glands, 15 oil glands, 230 sensory receptors and about half a million cells that are constantly dying and being replaced.

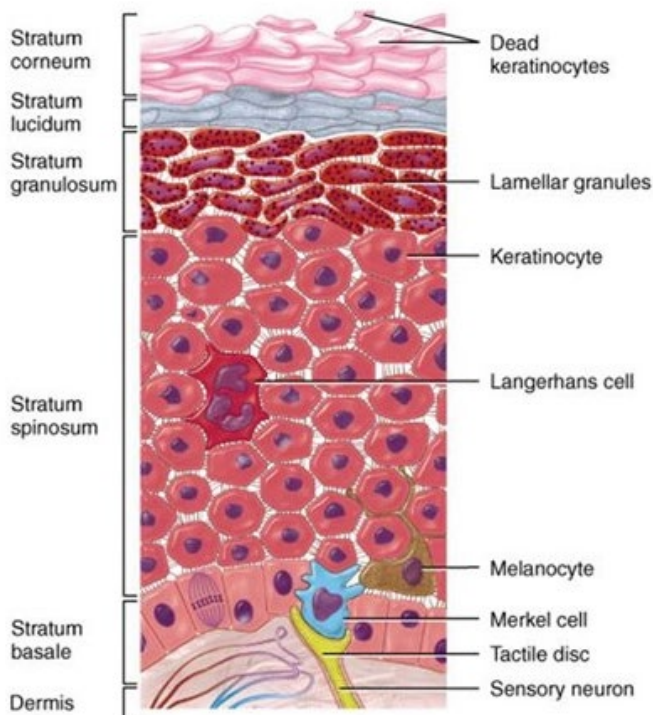


The Epidermis

The epidermis is the tough, renewable outer layer of the skin. Most of the cells in the epidermis are keratinocytes. They originate from cells in the deepest layer of the epidermis called the basal layer. New keratinocytes slowly migrate up toward the surface of the epidermis. Once the keratinocytes reach the skin surface, they are gradually shed and are replaced by newer cells pushed up from below.

The outermost portion of the epidermis, known as the stratum corneum, is relatively waterproof and, when undamaged, prevents most bacteria, viruses, and other foreign substances from entering the body.

Scattered throughout the basal layer of the epidermis are cells called melanocytes, which produce the pigment melanin, one of the main contributors to skin color. Melanin's primary function, however, is to filter out ultraviolet radiation from sunlight.



Functions of the Epidermis:

Physical Protection:

- Desquamation – Process that involves continuous shedding of epithelial cells as a protective and self-cleansing mechanism.
- Cell Turnover – The process of change that keratinocytes must undergo before they reach the Stratum Corneum to function as a barrier cell. The renewal time of epidermal cells is about 19 days and each cell spends an average of 10 days in its migration, making the total cell turnover approximately 29 days.

Chemical Protection:

- The Acid Mantle – Made up of a combination of sebum and sweat that together produce an acidic substance on the surface of the skin to ward off fungi and bacteria.
- Melanin – Produced by the melanocytes in the Stratum Basale. Melanin protects against U.V. radiation.

Langerhans Cells:

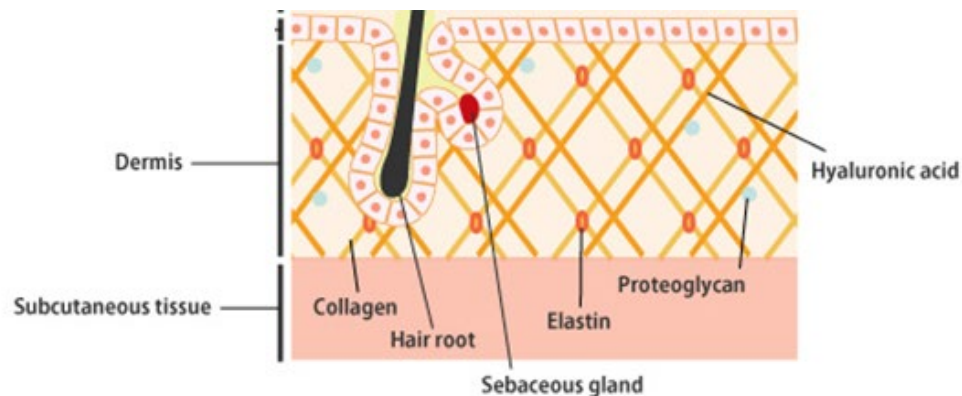
- Langerhans cells are immune cells that protect the skin affecting skin tolerance.

The Dermis:

The dermis consists of a mass of connective tissue formed by fibroblasts in which collagen and elastin are embedded. The dermis also contains blood vessels, lymphatic vessels, nerves, tactile corpuscles, sebaceous glands, sudoriferous glands and hair follicles, the later three usually referred to as appendages.

The papillary layer is the thinner of the two layers of the dermis and contains small, loose elastin and collagen fibers.

The reticular layer is under the papillary layer and consists of denser collagen bundles and coarser elastin fibers. This is the area that carries most of the physical stress of the skin and gives the skin its pliability.



Functions of the Dermis:

Collagen:

- Collagen maintain the tone and structure of the skin. Reasons why collagen breaks down includes:
 - Degeneration with age.
 - Degeneration with sun damage (easily cross-linked by free radicals (elastosis).
 - UVA inhibits collagen formation.

Elastin:

- Produced by fibroblasts and can be seen as a network of elastic tissue that keeps the skin toned and tight. Reasons for elastin break down are:
 - Elastin is also affected by free radical activity.
 - Broken down by enzyme elastase at a very precise rate, but speeds up with age, resulting in sagging of skin.

Ground Substance:

- This is the extra-cellular packing material, also known as “the matrix”, that collagen and elastin is suspended in. This matrix consists mainly of water and glycosaminoglycan’s (which hyaluronic acid is a component of.)
- Glycosaminoglycan’s maintains the water balance in the dermis, adds support for other dermal components and acts as a matrix for cell migration, metabolism and growth.
- Hyaluronic acid serves to promote inter cellular hydration.

Appendages:

- Include the hair follicles, sebaceous glands and the sweat glands. The one aspect they all have in common is that they reside in the dermis and open either directly or indirectly into the Stratum Corneum.

Free Radicals and Antioxidants

Free radicals (also called reactive oxygen species as they usually contain oxygen) are molecules with unpaired electrons. They rob other cells of electrons causing damage.

These free radicals can cause damage at cellular level and are implicated in the development and onset of skin conditions, especially pre-mature ageing.

Once free radicals are formed, a chain reaction can occur, the first free radical pulls an electron from a molecule, which destabilises the molecule and turns it into a free radical. That molecule then takes an electron from another molecule, destabilizing it and turning it into a free radical. This domino effect can eventually disrupt and damage the whole cell. Oxidative stress occurs when there are too many free radicals and too much cellular damage.

Many researchers have proven that ageing is a process of oxidizing caused by free radicals.



These apples demonstrate how oxidative stress breaks down your cells, causing premature ageing and disease.

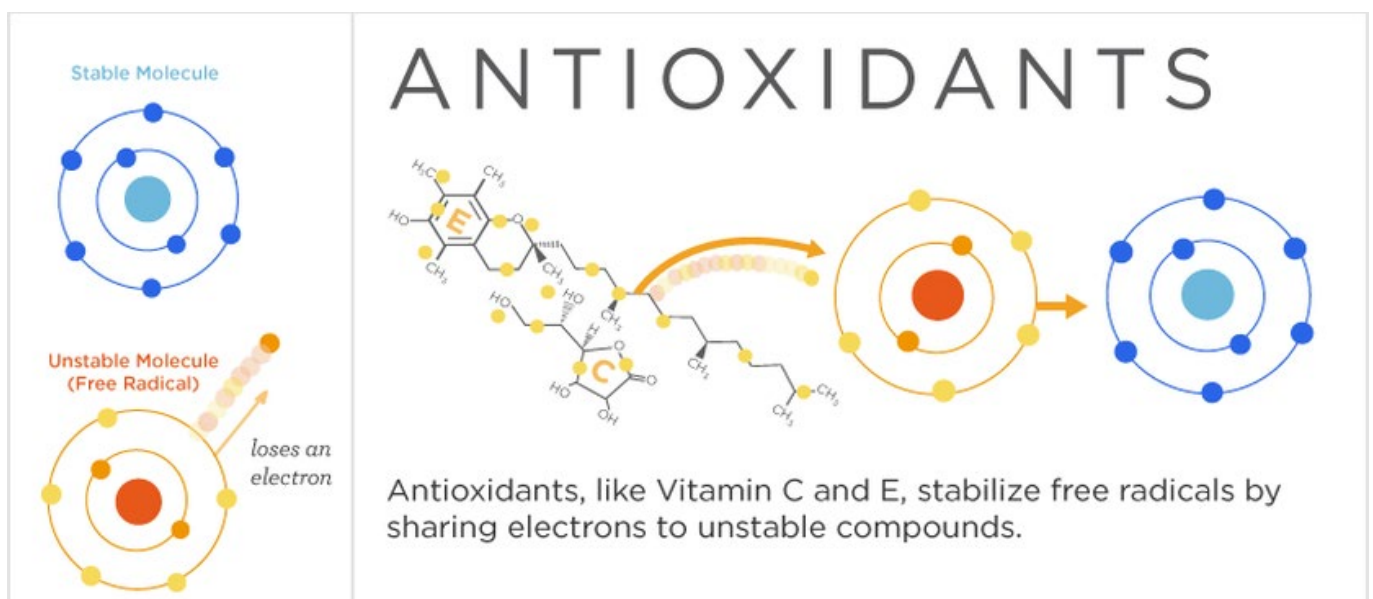
Picture free radicals as Pac-man eating away at the youthful look of your face. Each one is stealing your glow, adding pigment to your face and breaking down your elasticity.

Free radicals are produced by the body's metabolism as well as by external exposure to radiation, drugs, poisons, smoking, environmental toxins and even stress.

Antioxidants are molecules in cells that prevent free radicals from taking electrons and causing damage. Antioxidants are able to give an electron to a free radical without becoming destabilised themselves, thus stopping the free radical chain reaction.

Although it is important to ingest antioxidants daily, topical antioxidants are also important as they are like putting a wall between your face and all of those external free radicals.

It slows your ageing progression significantly and help to reduce inflammation, firm the skin, reduce the appearance of wrinkles and significantly reduce the negative effects of sun exposure.



In short, electron loss creates free radicals. Free radicals set off chain reaction causing erosion of cell membrane. Antioxidants neutralizes the free radicals.

pH balance of the skin

pH, which stands for potential hydrogen is used to describe the acid-alkaline ratio of a substance, which ranges from 0 (the most acidic) to 14 (the most alkaline) with 7 being neutral.

Acidic

Neutral

Alkaline



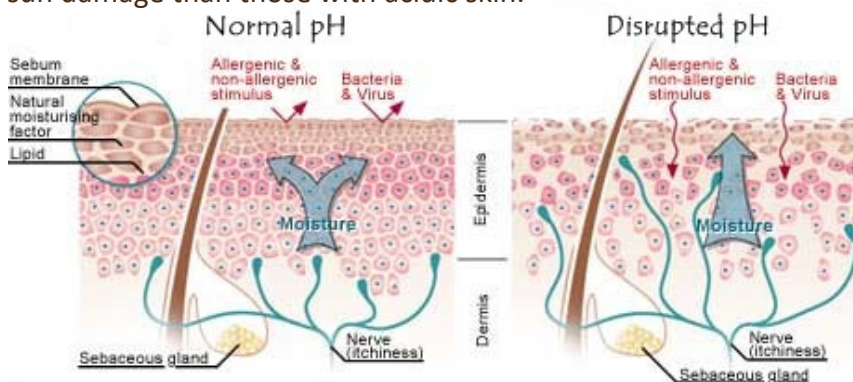
Our skin has a thin, protective layer on its surface, referred to as the acid mantle, which keeps moisture in and germs, bacteria and toxins out.

This acid mantle is made up of sebum (free fatty acids) excreted from the skin's sebaceous glands, which mixes with lactic and amino acids from sweat to create the skin's PH which ideally should be slightly acidic at 5.5.

Too alkaline and it could lead to dryness, sensitivity or an impaired skin barrier.

Too acidic and it could lead to breakouts, redness or inflammation.

Skin with an alkaline stratum corneum develops more fine lines and crow's feet and are more prone to sun damage than those with acidic skin.



Factors that disrupts the pH balance:

Washing with an alkaline soap causes to the pH to increase by an average of 3 units and remains altered for up to 90 minutes.

The quality of water is also important. Ideally, it should be a neutral pH or slightly acidic. The municipal water of Cape Town has a pH of 7.2 which is fine.

Diet plays an important role in determining our internal and external pH levels. It is important to note that a food's acid or alkaline formation in the body is not the same as the pH of the food itself. In an interesting paradox, foods that are considered acidic before digestion (like lemons) become alkaline forming in the body. Most animal products, which are alkaline prior to digestion, are considered acid-forming in the body. According to research, we need our diets to be less acidic than alkaline, otherwise internally, we become too acidic. This means that an ideal diet consists of consuming an abundance of alkalizing foods such as leafy green vegetables, citrus fruits, tomatoes, carrots and soybeans.

How to preserve and protect your skin's PH:

Use slightly acidic non-soap cleansers between 4.5 and 5.5.

Sodium laureth Sulphate which has a pH of 10 can disrupt the acid mantle so it is important to use cleansers that does not contain sodium laureth sulphate.

Use products that have been scientifically developed, considering pH as a factor.

Consume more alkalizing foods.

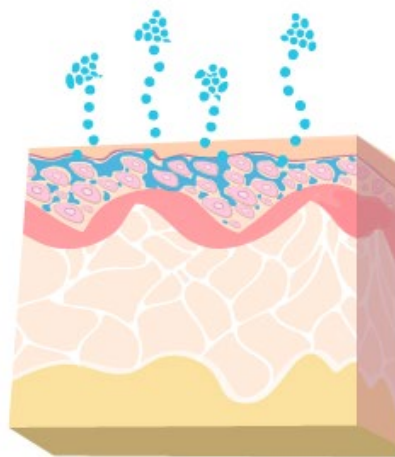
Transepidermal water loss (TEWL)

Transepidermal water loss is a measure of the amount of water that passes from inside a body to the outside via the epidermis. In other words when water passes from the dermis through the epidermis and evaporates from the skin's surface, this is known as transepidermal water loss.

Disruptions to the skin's barrier system including cuts, scratches, burns and even dry skin, can increase TEWL. It is also affected by external factors including temperature, humidity and UV light. Factors that damage or insult skin increase water loss, leaving skin feeling dry.

Your skin needs both hydration and moisturisation to maintain desirable levels of TEWL.

To achieve this, combine humectant and occlusive skincare ingredients. Humectants (such as hyaluronic acid, glycerin and AHA's) help to draw moisture to the epidermis, either from the air if it is humid enough, or from the underlying dermis in low-humidity conditions. Because water content that is drawn from the dermis can be lost through TEWL, it's important to combine the use of humectants with occlusives and/or emollients. Occlusives and Emollients (such as carrier oils and butters) help form a protective layer over the skin to keep moisture in. Together, these ingredients create a reservoir of moisture in the epidermis and act as a barrier on the skin to help prevent TEWL by sealing in that moisture. The occlusive agents simultaneously keep pollutants, toxins and harmful bacteria out.



T.E.W.L.

(Transepidermal Water Loss)

Hydration is lost by water content evaporating through the epidermis

Natural Moisturising Factor (NMF)

Natural Moisturizing Factors (NMF) are elements that keep the outer layer of the skin protected and well-hydrated. NMF are made up of multiple amino acids, fillagrin, fatty acids, triglycerides, urea, ceramides, phospholipids, glycerin, saccharides, sodium PCA, hyaluronic acid and many other compounds that are naturally present in the skin. NMF's work to keep skin's surface intact and supple.

It is worth noting that routine exposure to sensitising ingredients like drying cleansing agents and denatured alcohol cause serious depletion of skin's natural moisturizing factors, leading to visibly dry, tight-feeling, flaky skin.

The level of Natural Moisturizing Factor in epidermis decreases with age as well as the production of sebum. That's why one of the symptoms associated with mature skin is a persistent dryness and dehydration.

Skin Classifications

SKNLOGIC products are not only prescribed according to traditional skin typing but are also focused on the current skin health status to target specific skin conditions.

Colour System

To assist in prescribing the correct products for the specific skin type and condition we have introduced the colour dot system. Each skin type and condition are categorised by an allocated colour.

SKNType

A skin type is genetically determined by the over or under activity of the sebaceous glands. Skin type is determined by over active or under active oil secretion.

Balanced & Combination skin

Balanced Skin

{Red}



Indicators:

Fine even texture with a supple and smooth surface.
Pores are small and the overall skin tone is even.
May develop break outs due to increased hormonal activity which makes the sebaceous glands overactive.
Premature ageing around the eyes may also occur as this area requires more moisture and an under active sebaceous gland could contribute to premature ageing.

Combination Skin

{Red}



Indicators:

A combination of a partly dry and partly oily skin.
The central part of the face-the forehead, nose, chin and parts of the cheek (also known as the T-zone) are oilier and more prone to acne.
The cheeks are often dehydrated.

The focus when caring for Balanced & Combination skin types is to regulate the natural oil balance of the skin and protect it from environmental factors.

The fruit prescribed especially for Balanced & Combination skin types is Pomegranate that balances out oily and dry zones. Alpha Hydroxy Acids work well for controlling the oil and breakouts and are non-drying so can be used on the dry areas of the face as well.

Dry Skin

Dry Skin

{Purple}



Indicators:

Dry parched appearance and tends to flake.
Sensitivity, dullness and tightness of the skin.
Prone to wrinkles and lines due to the inability to retain moisture as well as the insufficient production of sebum by the sebaceous glands.

Causes:

Genetically predisposed to inadequate oil production
Intrinsic ageing - Sebaceous gland activity tends to decrease with age.

Dry skin should be cleansed with a cream cleanser that can help replenish moisture instead of stripping the skin from its natural oil and water levels. Hydrating is a very important part of the daily regime of a dry skin. Dry skin should avoid contact with highly alkaline or foaming soaps (this will worsen the sensitivity of the skin & dry it out).

Oily Skin

Oily Skin

{Orange}



Indicators:

The excess oil on the surface of the skin attracts dirt and dust from the environment
Oily skin is prone to black heads, white heads, spots, pimples and enlarged pores.

Causes:

Over secretion of sebum making the skin surface oily.

You cannot prevent oily skin, but you can keep the oil in control to prevent the effects of excess oil. Cleansing is an important part of caring for an oily skin. It is advisable to use products containing alpha-hydroxy acids, which remove dead cells and give skin a smoother appearance. It is a myth that oily skin should not use products that includes oils. If we strip the oil away, the skin will produce more oil to compensate, using products with small concentrations of oils can help slow down the production of oil in your skin. Some oils combats acne and other problems associated with oily skin and therefore can be used in small concentrations.

Sensitive skin

Sensitive Skin

{Yellow}



Indicators:

Mainly found in very fair skin, photo type 1 – 2.
Sensitive skin reacts with a quick inflammatory response when exposed to UV and have a higher potential to develop allergic reactions.

Causes:

Sensitive skin is a predisposition in the DNA

Sensitive skin is different from Compromised or Sensitised skin. Compromised skin is categorized under a condition and is explained further under this category.

SKNCondition

Skin conditions are a result of external and internal factors.

Dehydrated Skin

{Purple}



Indicators:

Dry appearance with a tendency to flake. Tightness, Dullness and Sensitivity.

Causes:

Due to lack of moisture in the Stratum Corneum.

Lack of water and not oil as with a dry skin type.

Any skin type can experience dehydration as sebaceous oil activity can still be normal or even overactive in dehydrated skin.

Other causes include lifestyle, such as diets deprived of essential fatty acids and excess intake of alcoholic beverages and certain medications.

Prolonged exposure to the sun causes water to evaporate from the skin.

Cold winds, air conditioning units and forced air heating can also contribute to dehydration.

Mature Skin:

{Green}



Indicators:

Fine lines & wrinkles. Loss of elasticity.

Thinning, roughness and uneven texture. Severe dryness.

Causes:

Intrinsic and Extrinsic Ageing.

UV radiation thickens the stratum corneum by inducing keratinocyte proliferation.

Cell turn-over in the epidermis slows and the living epidermis becomes thinner.

Langerhans cells diminish and reduce the skin's immune response.

The matrix of collagen and elastin in the dermis is more vulnerable to the outside environment and become damaged.

Collagen and elastin production in the dermis slow down.

Blood vessels of the dermis becomes more fragile.

Problematic Skin

{Orange}



Indicators:

Inflammation and blemishes

Acne prone and prone to breakouts Blackheads (comedones) and white heads (milia). Uneven texture. Congestion in skin.

Enlarged pores

Causes:

Abnormal **build-up of dead skin cells** on the surface of the skin due to reduce shedding.

Over production of **sebum** and thicker consistency of sebum causes enlarged pores, oiliness, uneven texture and breakouts.

As a result of the surface blockage, it provides a favourable environment for acne to survive and breed.

Due to irritation within the follicle caused by **bacteria** the skin becomes inflamed.

Hyper pigmented

Skin

{Pink}



Indicators:

Dark patches

Uneven skin tone

Discolouration

Causes:

Melanocytes are located in the basal layer of the epidermis and the papillary layer of the dermis.

Melanocytes synthesize melanin from the amino acid tyrosine.

Environmental factors can cause some melanocytes to multiply, producing an uneven distribution of active melanocytes in the skin. The high level of melanin production by some melanocytes and not by others results in a blotchy, uneven "freckle-like" appearance of melanin on the surface of the skin.

Inflammation caused by sunlight, allergic reactions, skin damage such as a cut or a pimple.

Medication such as antibiotics, retinoids and hormone medications.

Hormonal change such as pregnancy

Genetics – it may skip generations.

Compromised skin

{Yellow}



Indicators:

Cannot always be seen as it resides much deeper in the skin due to an impaired barrier function.

Can have itchiness, dryness, redness, flushing or in some cases stinging.

Often associated with dryness.

Causes:

No longer has the ability to protect and maintain itself.

Unhealthy acid mantle. Thin & weak stratum corneum. Low epidermis lipids. Langerhans cells fail to protect the skin against external attacks lowering the resistance to many outside influences.

Chemical irritants

Medications and medical treatments such as radiation or chemotherapy.

From the first moment of skin tissue damage the Mast Cells in the tissue release histamine which triggers the inflammatory response. Simultaneously, the capillaries and arterioles begin dilating and release plasma into the area as part of the inflammatory response to injury. If inflammation continues in an area and the skin is genetically sensitive conditions such as rosacea, eczema and contact dermatitis will develop over time.

SKNLOGIC Fruits

Fig Extract



Fig Extract has moisturising properties similar to the skin's own and is therefore an excellent hydrator for dry or dehydrated skin types. Fig extract helps restore the skin's own capacities for elimination of dead surface cells. It works as a gentle, biological peel and significantly activates the cell renewal rate. Fig Extract is rich in Antioxidants and contains vitamin A, B, C, E & K.

Vitamin A	Antioxidant Cell Renewal
Vitamin B	Promotes new cell growth Beneficial for combating acne
Vitamin C	Increases collagen production Antioxidant
Zinc	Anti-inflammatory Healing Beneficial for combating acne
Proteolytic Enzymes	Removes dead skin cells Unblock pores
Carbohydrates	Trans-epidermal water loss regulatory activity.
Phytosterols	Encourages collagen production

Pomegranate Extract



Pomegranate Extract is rich in AHA's and can be used as an astringent and a natural toner. Pomegranates are high in antioxidants as well as Vitamin C and Folic Acid. One of the key benefits is its anti-inflammatory properties. Not only does it soothe and refresh, it supports healthy collagen production to help maintain a smooth skin appearance. The antioxidants **protect** the skin and help fight free radicals.

Vitamin C	Increases collagen production Antioxidant
Vitamin B	Promotes new cell growth Beneficial for combating acne
Vitamin E	Maintains the skin's oil balance Healing and Repairing Antioxidant
Vitamin K	Improves skin elasticity Healing
Ellagic Acid & Folic Acid(AHA)	Antioxidant Cell renewal
Amino Acids	Stimulate collagen and elastin production
Zinc	Anti-inflammatory Beneficial for combating acne

Grapefruit Extract



Grapefruit extract assists the skin in fighting bacteria-causing acne and balances oil secretion. Grapefruit is particularly well-known for its rejuvenating properties that contains vitamins A, B, C and E and have a refreshing effect on the skin. Grapefruit reduces fine wrinkles, assist with skin discolouration and improves the appearance of oily skin.

Vitamin A	Antioxidant Cell Renewal
Vitamin B	Promotes new cell growth Beneficial in combating acne
Vitamin C	Increases collagen production
Vitamin E	Maintains the skin's oil balance Healing and Repairing
Zinc	Anti-inflammatory Healing Beneficial for combating acne
Carbohydrates	Trans-epidermal water loss regulatory activity.
Amino Acids	Anti-ageing

Pineapple Extract



Pineapple Extract contains fruit actives such as sugars and enzymes. These fruit actives are responsible for the moisturizing and anti-ageing action of the fruit, and have an antifungal and purifying effect on the skin. The sugars and derivatives form hydrogen bridges with the water on the surface of the skin, retaining it and thus maintaining the moisture of the horny layer to enhance the elasticity, resilience and softness of the skin.

Proteolytic Enzymes	Accelerates exfoliation. Unblocks pores
Carbohydrates	Trans-epidermal water loss regulatory activity.
Amino Acids	Anti-ageing
Vitamin A	Antioxidant Cell Renewal
Vitamin C	Increases collagen production
Citric, Malic & Folic Acids (AHA)	Cell regeneration and accelerates exfoliation Antioxidant

Kiwi Extract



Kiwi Extract's antioxidant properties assist the skin against premature ageing. It helps in the reduction of wrinkles resulting in a softer, younger complexion. Kiwi is a good source of vitamin E, an antioxidant that can help against potential skin degeneration and contributes towards healthy looking skin. Vitamin C is an essential element in maintaining the collagen in your skin, which keeps skin firm and supple.

Vitamin A	Antioxidant Cell Renewal
Vitamin B	Promotes new cell growth Beneficial in combating acne
Vitamin C	Increases collagen production
Vitamin E	Maintains the skin's oil balance Healing and repairing Antioxidant
Vitamin K	Improves skin elasticity Healing
Proteolytic Enzymes	Accelerates exfoliation. Unblocks pores
Zinc	Anti-inflammatory Healing Beneficial for combating acne
Carbohydrates	Trans-epidermal water loss regulatory activity.

Papaya Extract



Papaya Extract is beneficial for skin care and repair. You can use papaya to treat or eliminate old dead skin cells, acne, age spots and other skin disorders and even to reduce the signs of premature ageing. Papaya is a good source of Vitamin A and papain. Vitamin A acts as an antioxidant, while the papain breaks down inactive proteins and removes dead skin cells. The best feature of the fruit is its low sodium quality. Since the salt content is less, the water retention is also little. The result is an overall hydrated skin.

Vitamin A	Antioxidant Cell Renewal
Vitamin C	Increases collagen production
Proteolytic Enzymes	Accelerate exfoliation Unblocks pores
Alpha Hydroxy Acids	Citric and Malic Acids Cell regeneration and accelerates exfoliation Antioxidant
Carbohydrates	Trans-epidermal water loss regulatory activity.
Zinc	Anti-inflammatory Healing Beneficial for combating acne

Mandarin Extract



Mandarin Extract helps purify and re-balance the skin. At the same time, it promotes a finer textured skin, fighting infections and removing any congestion from the skin. The cytophylactic properties of the oil stimulate the growth of new skin cells, which is a beneficial when you wish to replace previously damaged skin with new healthy cells.

Vitamin C	Increases collagen production
Vitamin A	Antioxidant Cell Renewal
Vitamin B	Promotes new cell growth Beneficial in combating acne
Carbohydrates	Trans-epidermal water loss regulatory activity.
Amino Acids	Anti-ageing

Apple Extract



Apple Extract is one of the latest fruit extracts used in skin care products. Apples contain vitamins A, C and zinc, and prevent the skin from acne formation and breakouts. It is also rich with Alpha hydroxy acids. Apple cells are absorbed by the skin's surface to slow the signs of physical ageing while protecting the skin from the environment.

Vitamin C	Increases collagen production
Vitamin A	Antioxidant Cell Renewal
Vitamin B	Promotes new cell growth Beneficial for combating acne
Vitamin E	Maintains the skin's oil balance Antioxidant effect by suppressing harmful effects of free radicals Healing and repairing
Vitamin K	Improves skin elasticity Healing
Malic Acid (AHA)	Cell regeneration and accelerates exfoliation Antioxidant
Amino Acids	Anti-ageing
Zinc	Anti-inflammatory Healing Beneficial for combating acne
Phytosterols	Encourages collagen production

Banana extract



Banana extract consist of soothing properties that assist in reducing skin inflammation. Bananas also assist in making the skin supple and soft and it is known to be used in clearing acne as well. They have been reported to be anti-bacterial in nature and hence they are used to treat skin blemishes. Banana is a great emollient for your skin. They are rich in protein and natural fats and can be used on all skin types.

Vitamin A	Antioxidant Cell Renewal Improved appearance of blemishes
Vitamin B	Promotes new cell growth
Vitamin C	Increases collagen production
Vitamin E	Maintains the skin's oil balance Healing Repairing Antioxidant effect by suppressing harmful effects of free radicals
Vitamin K	Improves skin elasticity Healing
Zinc	Anti-inflammatory Healing Beneficial for combating acne
Carbohydrates	Trans-epidermal water loss regulatory activity.
Phytosterols	Encourages collagen production

Raspberry



Raspberries moisturize skin tissue and aids in healing after sunburn. Promotes wound healing and reduces scar formation. Contains vitamin C and has a natural astringent effect, antiseptic and anti-bacterial. Rich in essential fatty acids & contains gamma-tocopherol in active free form. This lipophilic extract is recommended for all skin types but is especially nurturing for mature skin.

Vitamin C	Increases collagen production
Vitamin B	Promotes new cell growth
Vitamin A	Antioxidant Cell Renewal
Vitamin K	Improves skin elasticity Healing
Citric & Malic Acids (AHA's)	Cell regeneration and accelerates exfoliation Antioxidant
Zinc	Anti-inflammatory Healing Beneficial for combating acne

Bearberry



Bearberry's high content of Alpha Arbutin makes it highly effective in reducing the synthesis of melanin and consequently gives a whitening/lightening effect. Due to its role as tyrosinase inhibitor, Bearberry has become a common ingredient in skin-whitening products designed to treat age spots, freckles, melasma and hyperpigmentation problems. Bearberry extract also has antioxidant properties.

Alpha Arbutin	Whitening/Lightening effect Reduce dark spots
Flavanoids	Antioxidant Anti-inflammatory.
Alpha Hydroxy Acids	Malic Acid Cell regeneration and accelerates exfoliation Antioxidant

Other active ingredients

Alpha Hydroxy Acids

AHA's are hydrophilic (water soluble) organic acids derived from food products and works as an exfoliating agent and removes dead cells from your skin increasing cell turn over. They also occur in the natural physiological processes of the human body.

AHA's are very effective to reverse sun damage, treat hyperpigmentation and is an extremely effective treatment for acne.

- Reduction in the Stratum corneum thickness due to the alteration of the strength of cohesion between the basal and epidermal cells. This stabilised after 8 weeks of applications to the skin daily for a period of one year or longer.
- Thickening in the living epidermis as a result of higher protein epidermal cells.
- Increase deposition of Glycosaminoglycan's allows the skin to retain more water and increases hydration.
- Improvement in texture of the skin
- Increased collagen synthesis in the dermis resulting in improved elasticity and reduction of lines.
- Dormant melanocytes cells are activated and there is less melanin clumping

Glycolic Acid – from sugar cane	Encourages exfoliation Rejuvenating Hydrating High penetrative capacity, smallest molecular weight and size of all the AHA's.
Lactic Acid – from milk or fermented sugar	Encourages exfoliation Hydrating Skin brightening Helps treat hyperpigmentation. Our lactic acid is produced by fermentation of sugar and is not an animal by-product.
Citric Acid – from citrus fruit	Encourages exfoliation Increases collagen production Antioxidant
Malic Acid – from apples	Encourages exfoliation Cell regeneration Rejuvenating Treats fine lines and wrinkles

Beta Hydroxy Acids

BHA's also have exfoliating properties markedly similar to AHA's and yield similar results. However, as they oil soluble they have the ability to reach deeper into the pores helping to clean the pores while acting as an antibacterial and anti-inflammatory.

Salicylic Acid – from Willow tree	Encourages exfoliation Unclogs pores Anti-inflammatory Antibacterial Combats acne and breakouts
--	---

Phyto Compound blend

Phyto Compound blend consist of 7 Swiss Alpine plants. It is certified organic by ECOCERT, COSMOS and NATRUE.

Mallow extract	Improves the skin's ability to retain moisture
Peppermint Leaf extract	Soothing Healing Anti-inflammatory
Cowslip extract	Skin lightening effect by inhibiting tyrosinase
Lady Mantle extract	Antioxidant Healing Helps treat skin infections such as eczema and rashes.
Veronica Officinalis Extract	Soothing Calming
Melissa Officinalis Leaf extract	Antibacterial Anti-inflammatory
Yarrow extract	Healing Rejuvenating Antibacterial

Hyaluronic Acid

Hyaluronic acid is a substance that is naturally present in the human body helps keep the skin plump, soft and supple. It is a substance of glycosaminoglycan which is a vital natural substance that is a youth-supporting part of skin. Our ability to produce hyaluronic acid declines with age which can lead to increased dehydration, fine lines, wrinkles and sagging. Hyaluronic acid molecules have the unique ability to attract and retain more than 1000 times their weight in water.

Hyaluronic Acid draws water to the skin and helps prevent moisture loss Revitalises the skin making it look and feel softer and smoother, increasing firmness and pliability of the skin while diminishing the appearance of fine lines and wrinkles.

Hylasome EG10	A chemically crosslinked hyaluronic acid derived from a non-animal source. Hylasome EG10 has 50 times the water binding capacity of hyaluronic acid and 5 times more moisturization than hyaluronic acid after 24 hours.
----------------------	--

Growth Factor

Growth Factors are proteins that regulate cellular growth, proliferation and differentiation under controlled conditions. They play an essential part in maintaining healthy skin structure and function.

Growth factors are secreted by all cell types in the epidermis and dermis including keratinocytes, fibroblasts and melanocytes.

They promote the formation of collagen and elastin to provide firmness and elasticity.

Cells in ageing skin make fewer growth factors than cells in youthful skin. One approach to support the levels of skin rejuvenation is to regularly use skin care products with a high concentration of stable growth factors. Daily use of skin care products containing growth factors is known to help reduce the appearance of fine lines, wrinkles and improve skin tone and texture.

Combinations of growth factors with antioxidants (eg, vitamin C & E) and peptides tend to show results sooner, typically within 4–8 weeks.

CytoRegulin™

CytoRegulin™ is a heptapeptide that can activate TGFβ1 (Transformative growth factor)-related pathways, which is responsible for stimulating key anti-aging pathways leading to healing and the restoration of the extracellular matrix. What makes CytoRegulin™ distinctive, is that it can activate TGFβ1 targets despite disrupted receptor biology. This disruption in TGFβ receptors is caused by both natural intrinsic aging and environmental extrinsic aging mechanisms. As a result, CytoRegulin™ activates multiple pathways critical to healing and repair, restoring the needed pathways for more youthful skin. CytoRegulin™ has been shown to modulate matrix related genes and build collagen.

- Provides continual repair to damaged skin
- Restores youthful vitality
- Broad-spectrum activation of the skin's own natural renewal processes.
- Helps keep the skin looking young, even when age and UV damage have reduced the ability of the skin's own natural growth factors to work.
- Stimulates collagen production and minimizes its breakdown.
- Calms inflamed skin.

Dermal Stem Cells

Our skin cells die and are replaced by new cells every 21 days. This renewal is made possible by stem cells. Stem Cells are unique because of their ability to divide. Although stem cells ensure the daily renewal of our skin, they are only present in small numbers with a short life span and remain protected in the deepest layers of our tissues. As they are precious and fragile, they act via “adult stem cells” which are predisposed to renew one or more precise cell types and are the main cells responsible for skin cell balance and their perpetual renewal.

Phytojuvenile™

Extracted from the brown seaweed *Laminaria digitata*, also called oarweed, or “fouet des sorcières” in France and “Kombu” in Japan.

Rich in polysaccharides, polyphenols and minerals.

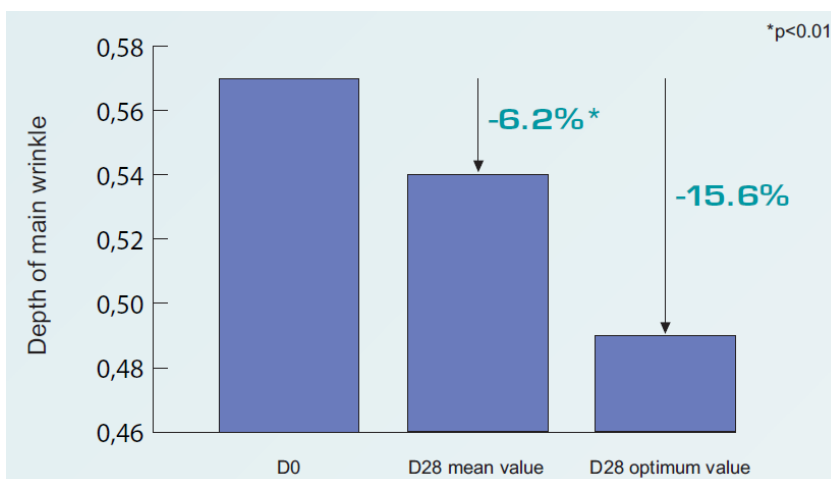
Contains amino acids and peptides.

Has a high polyol concentration with protective properties, providing an energy reserve for our cells.

Phytojuvenile acts on adult stem cells in the dermis in 3 steps:

1. It **restores** ageing adult stem cells of the dermis with their capacity for division, thereby stimulating their action.
2. It **protects** adult stem cells from ageing by preserving and prolonging their efficacy
3. It **rejuvenates** fibroblasts, stimulates collagen synthesis in mature skin and erases wrinkles. They signal the body’s cells to rejuvenate resulting in younger-looking skin.

Significant Reduction in Depth of wrinkles after 28 days.



40 volunteers aged 40 – 55. After 28 days and average reduction of 6.2% and up to 15.6% reduction in depth of wrinkles.

Before



After 28 days



Lipobead Detox Activated Charcoal

Our Activated charcoal is encapsulated in a spherical delivery system to ensure maximum effect without the mess, making it much easier to use and to clean. Because of this delivery system it does not dry out the skin.

Detoxify	<p>Our body absorbs toxins not only through the skin, but also via the lungs and our digestive system. Although the main route to neutralize and eliminate them is through the liver and kidney, some of these toxins can be released on the skin surface carried by sweat. If not removed they can cause oxidation, inflammation and skin barrier damage. Activated charcoal can detoxify and purify the skin by adsorbing these toxins that are difficult to remove by detergency only.</p> <p>Once adsorbed by the charcoal they can simply be rinsed away.</p>
Protect	<p>Protect from Pollution by Trapping Volatile Organic Compounds (VOCs). VOCs are gases released from many commonplace materials. VOCs include a variety of chemicals emitted by organic solvents present in paints, cleaning products, pesticides, building materials, copiers and printer inks. VOCs are also associated with indoor pollution as many chemicals present and used in the household or the office contain organic solvents emitting VOC. VOCs like benzene are also released by cigarette smoking. Skin exposure to pollution and VOCs leads to an increase of trans-epidermal water loss (TEWL) and increased skin reaction to allergens, suggesting an altered skin barrier. It has also been associated with increased dermatitis. Activated charcoal has shown the capacity to bind several VOCs and therefore preventing their harmful effect on skin.</p>
Cleanse	<p>Removal of Impurities & Oxidized Sebum</p> <p>Organic pollutants reaching the skin, excess sebum, dirt, and make up residue are difficult to remove especially when they accumulate in pores or are trapped in the superficial skin layers. If not removed these impurities can cause skin oxidation, inflammation and weaken the skin barrier. Excessive pollution and the increased frequency of oily skin have furthermore exacerbated the risk of inflammation especially in sensitive skin. The overuse of detergents and harsh surfactants to remove dirt from an increasingly impure skin has led to increased dermatitis, weakened skin barrier and dehydrated skin.</p> <p>To avoid the overuse of detergents, Activated Charcoal can complement a milder cleansing approach, by boosting the removal of impurities while avoiding skin stripping due to a mechanism based on physical absorbance rather than dirt solubilization and removal. Its high absorbance capacity enables a lower use level for a maximum effect. Once impurities are adsorbed, the activated charcoal can then be washed away.</p>

Omega Fatty Acids

Omega fatty acids are valuable fats, for your diet and your skin. Omega 3 & 6 are considered essential fatty acids because the body cannot make them on its own.

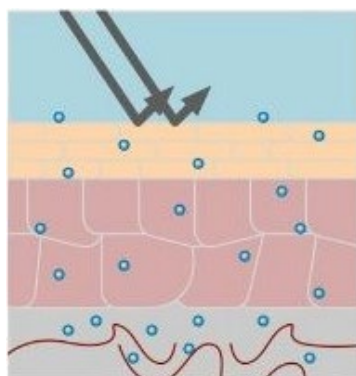
Omega fatty Acids serve as the essential building blocks of skin's surface layers, creating a smoother, more even, younger-looking, and healthier complexion, no matter your age or skin type.

The outermost layer of your skin that has a natural, protective barrier that when healthy keeps it safe from trans-epidermal water loss and potential irritants and allergens from getting into your skin, which can cause a variety of dermatological issues, like acne, dryness, chronic inflammation and overall sensitivity. This barrier is made up out of ceramides, sterols, and free fatty acids arranged as extracellular lamellar bilayers in the stratum corneum. A damaged barrier function is one of the main causes of sensitized skin. Some essential fatty acids in skincare are proven to reduce the incidence of spots, are anti-inflammatory and can even balance an oily skin type.

Omega 3	Essential Fatty Acid (EFA). Helps to restore the skin's barrier function and reduce water loss. Reduces inflammation. Accelerates healing. Lessens UV-induced photo damage.
Omega 5	Comes from Pomegranates. One of the unsung heroes of the Omegas. A study done by the University of Michigan found that Pomegranate seed oil with its Omega 5 content helps speed up skin rejuvenation. Omega 5 works by stimulating keratinocyte proliferation in the epidermis. Helps restore and maintain compromised skin barrier. It stimulates collagen production by fibroblasts in the dermis.
Omega 6	Essential Fatty Acid (EFA). Helps to restore the skin's barrier function and reduce water loss. Anti-inflammatory. Helps to treat eczema and psoriasis. Nourish and protect the skin.
Omega 7	Another unsung hero of the omegas. Active anti-microbial that is found naturally in youthful skin and is absorbed quickly by the skin. Omega 7 levels in our skin reduce with age, contributing to the appearance of fine lines, wrinkles and weathered skin. It can also boost collagen production and protect your skin against sun damage, toxins and environmental stress.
Omega 9	Are richer and heavier in consistency. They are extra-occlusive and seal in moisture well. It is absorbed well by the skin and has anti-inflammatory and softening properties.

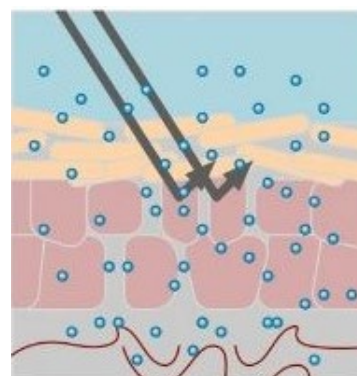
Healthy Skin Barrier Function.

Moisture stays inside and Harmful substances stays outside.



Compromised Skin Barrier Function.

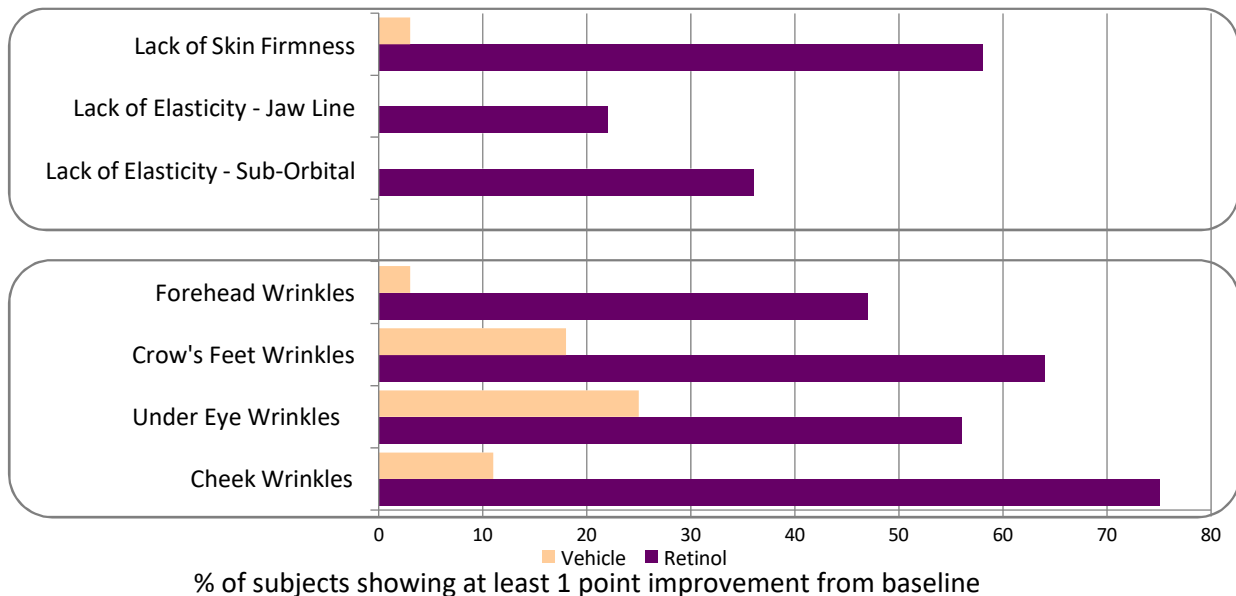
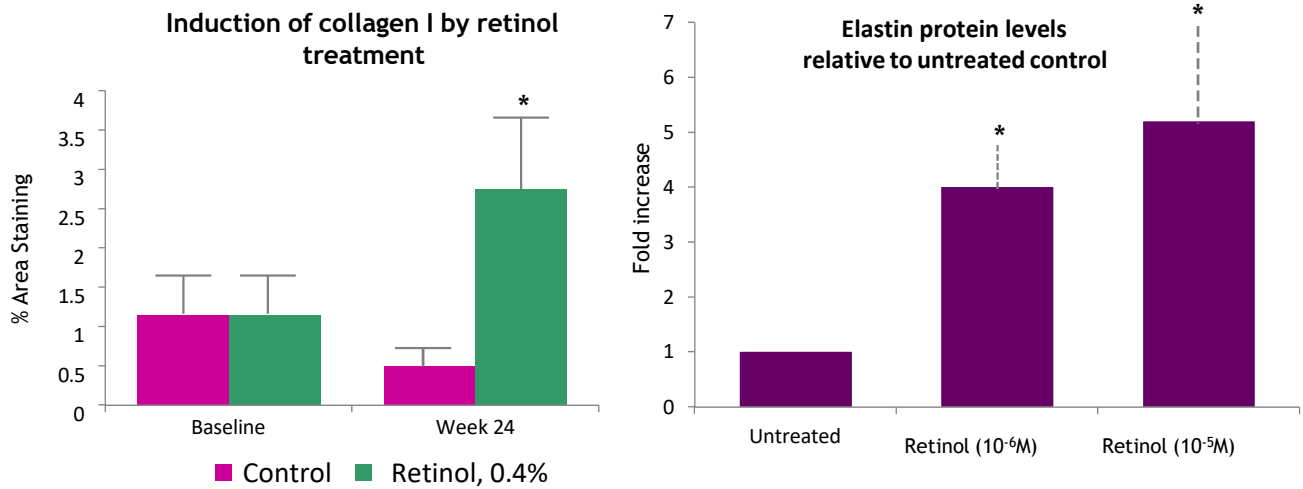
Trans Epidermal Water loss occurs. Harmful substances penetrate the skin.



Retinol

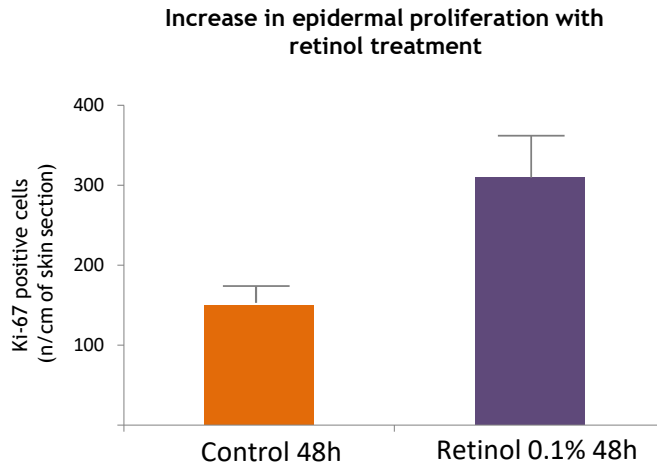
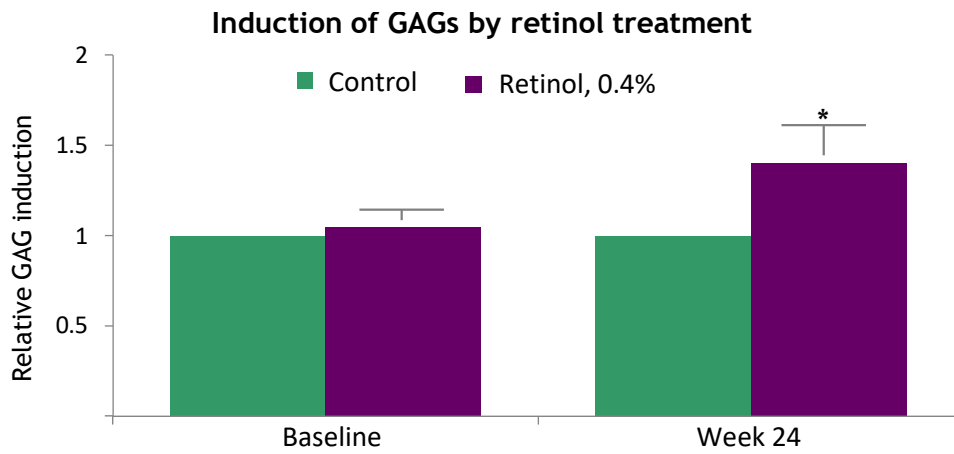
Anti-Ageing

Improves the appearance of fine lines and wrinkles.
 Improves firmness and elasticity of the skin.
 Increases synthesis of collagens and induces dermal elastin and fiber formation. Reduces Collagen Degradation.



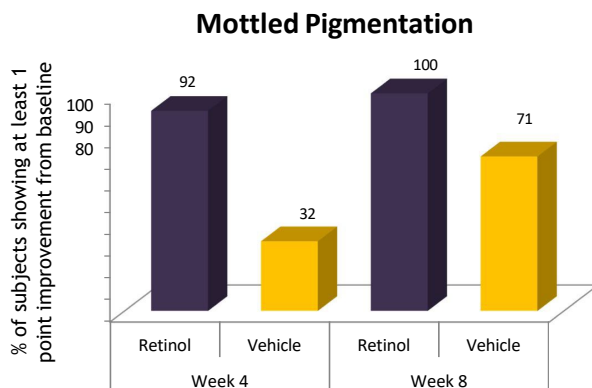
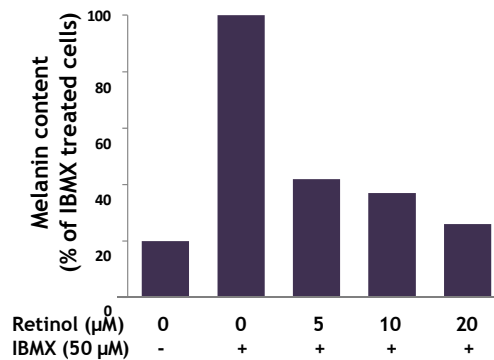
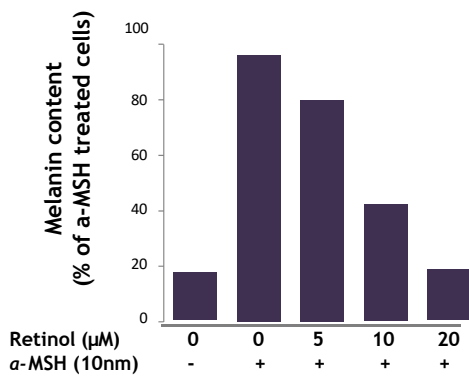
Improves skin texture and thickness.

Improves skin texture and increases the thickness of the skin.
 Epidermal thinning is one of the signs of ageing triggered by a decrease in keratinocyte turnover rate.
 Epidermis is particularly thin at the bottom of the fine lines and wrinkles. Retinol stimulates epidermal cell proliferation which leads to epidermal thickening.
 Induces glycosaminoglycan (hyaluronic acid) expression in chronologically aged skin. After 24 weeks, the GAGs levels were on average 40% higher in retinol-treated skin vs. vehicle-treated skin, this results in smoother more even textured skin.
 Reduces acne outbreaks by preventing dead cells from clogging pores.



Diminishes uneven skin tone and reduces discolouration

Reduces discolouration and mottled pigmentation
Rebalances uneven skin tone.
Skin pigmentation is caused by melanin synthesis in UV radiated melanocytes. Retinol inhibits melanin synthesis in B16 melanoma cells.



Retinol efficacy was evaluated in an eight-week, double-blind, split-face, vehicle-controlled, randomized study* conducted during the winter period among 64 female volunteers aged 40-65. 0.1% retinol containing moisturizer was applied daily. Clinical evaluations were performed by the dermatologist at baseline and at weeks 4 and 8 on each side of the face, based on the 0-9 scale.

Difference between Retinol and Retinyl Palmitate

Retinoids are the group of Vitamin A derivatives. Retinoid is a general term for any vitamin A-based topical used in skin care, but it often specifically refers to prescription-strength products that use Vitamin A.

Both Retinol and Retinyl Palmitate are retinoids, which means that they're converted to retinoic acid, the most active and effective form in the skin. Retinol only undergoes one conversion step to become retinoic acid while retinyl palmitate undergoes two steps. Retinol is the purest form of Vitamin A available without a prescription and is considered about 20% more potent than Retinyl Palmitate. Retinyl Palmitate is the weakest version, but also the least irritating, so it's a better option for someone who is new to using retinoids or has sensitive skin.

Despite the fact that retinyl palmitate is mild, it can still help improve the same skincare concerns retinol would, it is just not as effective, and works slower than Retinol. Retinyl Palmitate is a great choice for those with more sensitive skin or skin being introduced to retinoids. Try Sknlogic Night Plus with Retinyl Palmitate. For best results you can combine Retinol and Retinyl Palmitate products in your regimen once your skin has built up a tolerance to Retinol. Mix Retinol 0.5 Booster and Sknlogic Multi Regenerating Masque with Retinyl Palmitate, leaving it on over night twice a week.

There are 3 prescription-strength retinoids on the market: Tretinoin, Tazarotene and Adapalene. Tretinoin and Tazarotene are prescription strength and cannot be sold over the counter and has to be prescribed by a medical professional. Adapalene, the mildest of the 3, is available in low concentrations of 0.1% in over the counter pharmaceutical products.

Botanical extracts and Essential oils

Sknlogic utilises many extracts, and essential oils derived from plants.

Cucumber extract	Improves the skin's ability to retain moisture Hydrates Penetrates the skin without damaging the cell membrane Vitamin C increases collagen production and fights free radicals Removes dead skin cells Provides relief in acne breakouts and skin irritation Maintains skin's elasticity
Jojoba Wax Beads	Mechanical exfoliator. Biodegradable Free of microplastics Spherical Non-GMO Botanical Oxidatively Stable Noncomedogenic Hypoallergenic Natural alternative to polyethylene beads.
Witch hazel extract	Restores the skin's pH balance Anti-inflammatory Antibacterial Healing Reduces excess oil Locks in moisture Protects against cell damage. Tightens and tones the skin
Rosehip oil	Hydrating, Helps with the appearance of age spots and hyper-pigmentation. Rich in Omega 3 and 6 fatty acids Anti-inflammatory Soothing
Blackcurrant oil	Anti-inflammatory Antioxidant Antibacterial Helps to maintain skin elasticity. Stimulate microcirculation and strengthens the blood vessel. Rich in Omega 6, one of the essential compounds to build strong cell walls and plays a major role in the hydrating process of the epidermis. Helps treat skin conditions such as eczema and psoriasis.
Rosemary extract	Prevents environmental damage Reduces excess oil Rehydrates and tones the skin Antioxidant Anti-inflammatory Helps in the treatment of dermatitis, eczema and rosacea
Daisy extract	Contains Arbutin. Skin lightening agent, Pigment inhibitor & Reduces Melanin production Improves uneven skin tone
Orange oil	Anti-inflammatory Rejuvenating Antioxidant Improves skin elasticity by increasing collagen synthesis
Tea Tree Oil	Anti-inflammatory Anti-bacterial Treats spots and pimples.

Carrier oils and Butters

We use plant and nut-based carrier oils instead of petroleum based mineral oil for their beneficial properties for the skin.

Olive oil	Vitamin A promotes cell renewal Softens and moisturises Vitamin E fights free radicals and maintains the skin's balance Polyphenols, phytosterols and avenasterols fights free radicals and repair cell membranes Anti-ageing Healing
Sunflower oil	Rich in essential fatty acids and helps the skin retain its moisture Vitamin E heals and helps to prevent scarring. Improves inflammatory conditions such as acne and eczema as well as general redness of the skin. It absorbs easily and is non-comedogenic.
Grape seed oil	Rich in vitamins, minerals and protein Contains polyphenols which help slow the process of ageing Anti-inflammatory Antioxidant Help prevent pores clogging and breakouts.
Avocado oil	Hydrating and soothing.
Evening primrose oil	Promotes healing Binds moisture Softens and improves firmness of the skin.
Sweet Almond oil	Rejuvenating Softening Soothing.
Wheat germ oil	Hydrating Antioxidant Healing
Borage Oil	Stimulates skin cell activity and encourages skin regeneration. Contains high levels of gamma-linoleic acid (GLA), making it useful in treating all skin disorders, particularly allergies, dermatitis, inflammation, and irritation. Borage oil penetrates the skin easily.
Joboba Seed oil & Butter	Soothes dry skin Anti-inflammatory. Helps with skin repair and damage control.
Shea Butter	Derived from the African Karite Tree. Considered to be the most respected and well-known of all the butters for its intense moisturizing, soothing and balancing skin properties. Promotes skin renewal Accelerates healing Assists with the prevention of wrinkles Helps protect the skin from harsh elements Rich in Vitamins A, E, and F along with minerals.
Marula Oil	Rich in Omega 6 & 9. Repair damage caused by pollutants, reduce the appearance of maturing skin, prevent skin from losing moisture. Enhances skin elasticity and firmness while facilitating healing of irritation, inflammation and redness.
Camelina oil	With enhanced stability and penetration ability of Omega 3. Antioxidant Improves skin tone.
Olus oil	With enhanced stability and penetration ability of Omega 3 and 6. Reduces water loss Softens and soothes skin.

Macadamia Oil	Rich in Omega 7 & 9. Anti-inflammatory Help restore the skin's barrier function and reduce water loss.
Aloe Vera Extract	Cooling Anti-inflammatory Hydrating Boosts healing of damaged skin

Other active ingredients

Vitamin E	Powerful Antioxidant. Reduces the appearance of fine lines and wrinkles. Helps prevent and treat sunburns and age spots. Assists in maintaining the skin's oil balance. Strengthens the skin's barrier function.
Vitamin C	Promotes collagen production, which has the potential to thicken the dermis, diminish fine lines, and is essential for firm, youthful skin. Powerful antioxidant that protects skin cells from damaging free radicals caused by UV exposure. Inhibits melanin production in the skin, which helps to lighten hyperpigmentation and brown spots, even out skin tone, and enhance skin radiance. Helps to repair damage from sun exposure and collagen loss by encouraging healthy cell turnover and regeneration.
Panthenol (Provitamin B5)	Panthenol is a B5 provitamin, meaning the body turns it into vitamin B5. It helps skin cells attract moisture and seals that moisture in. Calms irritated skin and promotes healing Reduces inflammation Antibacterial
Apricot Kernels	Assist with a deeper exfoliation. Perfectly grounded powder so that the skin is not damaged.
Protease Enzymes	Breaks down detached dead skin cells from the skin surface Mimic the role of your own body's natural protease enzymes and promote decay of the protein and dissolution of dead skin cells stimulating cell renewal
Kaolin	Cleanses and purifies Healing Soothing and Nourishing Tones the skin Helps improve the blood circulation. Helps to treat oily skin as it helps control sebum production. Helps in regenerating and mineralizing of dry areas
Bentonite Clay	Opens and cleans pores. Removes excess sebum Antibacterial
Hydrolysed Wheat Protein	Increases the firmness of the skin Pore minimizer
Hydrolysed Collagen	A mixture of small peptides obtained through the hydrolysis of collagen. Balances the water content of the skin and helps keep it soft and smooth.
Stearic Acid	Replenishes the lipids in the top layers of the skin.
Retinyl Palmitate (Vitamin A)	Supports the development of collagen in the skin Helps control the formation of fine lines

	Restores the texture and the appearance of dry and damaged skin, while restoring the suppleness of the skin.
Glycerin (plant-based)	Glycerin is a skin-replenishing and restoring ingredient, it is a substance found naturally in skin and works in the same way as Hyaluronic as it is a humectant that bonds with water molecules to increase water content in the skin itself. It has a smaller molecule size so it can penetrate the skin more easily. Hydrating Cooling Softening
Epidermist	Reduces the appearance of pores. Inhibition of bacterial growth to limit acneic tendency. Improvement of skin hydra-memory function to maintain good hydration level Antibacterial Anti-inflammatory Improvement of cellular renewal to eliminate dead cells and dirt that clog the pores Improved barrier function.
LipoSilt	Freshwater sediments more than 30 000 years old from freshwater lakes in Eastern Europe. Higher Humic-Fulvic acid content than Dead sea mud. Humic-Fulvic acids deliver 72 naturally occurring minerals to the skin's surface, reversing cellular damage. Accelerates epidermal turnover Hydrates the skin Evens out skin tone Reduces Sebum content.
Beeswax	Locks in moisture and protects the skin from damaging environmental factors. Softening Anti-inflammatory. Anti-bacterial Rejuvenating Relieves symptoms of eczema.
Ferulic Acid	Antioxidant that works to boost the effects of other antioxidants such as Vitamin C & E. Helps to protect overall skin integrity by reducing the development of fine lines, spots, and wrinkles.
Diatomaceous Earth	Naturally occurring soft siliceous sedimentary rock. Consists of about 80%-90% silica, 2%-4% alumina and 0.5%-2% iron dioxide. Silica is used to build & maintain healthy connective tissue in skin. As we age, silica levels decrease in our bodies leading to sagging skin and fine lines.
Algin	Algin is a polysaccharide gained from different kinds of brown algae. It is hydrating and remineralising, improves cell metabolism and skin elasticity.
Niacinamide	Helps repair the skin's lipid barrier. Minimizes redness and blotchiness Minimizes pore appearance Regulates oil Treats hyperpigmentation. Antioxidant Minimizes fine lines and wrinkles Treats acne.
Soyglycone	Encapsulated preparation of genistein, the biologically active form of the most abundant soy isoflavone. Genistein is a powerful collagen booster: it strongly stimulates the production of collagen but also prevents its degradation by matrix metalloproteinases. Delivers a visible lift. Reduces fine lines and wrinkles. Re-densifies and firms the skin.



Cleanse

SKNLOGIC Cleansers gently wash away impurities with conditioning and antioxidant ingredients, addressing your skin issues and prepping your skin for treatment. SKNLOGIC offers 1 Pre-cleanser and 3 Cleansers to treat specific skin conditions.

SKNLOGIC cleansers are **sulphate-free** and contains active ingredients that help treat and restore the skin while removing oil secretions and impurities without drying the skin.

Treat Skin Type



Remove



Remove with Pineapple extract is a non-irritating make-up remover and pre-cleanser that will efficiently remove make-up, oil secretions and impurities without drying out the skin. Safe to use around the eye area. Not recommended for clients with artificial eyelashes.

SKNtype: Most skin types

Does not contain Parabens, Sulphates, Synthetic Fragrance, and Synthetic Colourants, Lanolin derivatives, Mineral oil or MIT's.

Pineapple extract	Vitamin A promotes cell renewal Vitamin C increases collagen production Proteolytic Enzymes accelerates exfoliation and unblocks pores Alpha Hydroxy Acids promotes cell regeneration Carbohydrates helps the skin retain moisture Amino acids fill in lines and wrinkles
Cucumber extract	Hydrates Penetrates the skin without damaging the cell membrane Vitamin C increases collagen production and fights free radicals Removes dead skin cells Provides relief in acne breakouts and skin irritation Maintains skin's elasticity
Olive oil	Vitamin A promotes cell renewal Vitamin E fights free radicals and maintains the skin's balance Polyphenols, phytosterols and avenasterols fights free radicals and repair cell membranes Anti-ageing Healing Softens and moisturises

How to use

Apply Remove to a cotton pad or gauze and gently remove make-up over the eye area and cleanse the rest of the face. Follow with prescribed cleanser and Tone and other prescribed treatments.

Size

Retail: 200ml Dispenser

Gentle cleanse cream



Gentle cleanse cream is a gentle, pH balanced, soap-free, creamy cleanser that cleanses without disrupting the skin's moisture barrier. Hydrates the skin, leaving it feeling conditioned and nourished.

SKNtype: Dry and Sensitive Skin

Does not contain Parabens, Sulphates, Synthetic Fragrance and Synthetic Colourants, Lanolin derivatives, Mineral oil or MIT's.

Fig extract	Encourages collagen production and cell renewal. Proteolytic enzymes remove dead skin cells and unblock pores Regulates trans-epidermal water loss.
Sunflower oil	Helps the skin retain its moisture. Improves inflammatory conditions such as acne and eczema as well as general redness of the skin. It absorbs easily and is non-comedogenic.
Vitamin E	Antioxidant. Reduces the appearance of fine lines and wrinkles. Helps prevent and treat sunburns and age spots. Assists in maintaining the skin's oil balance. Strengthens the skin's barrier function.
Vitamin C	Significant antioxidant and healing properties.
Citric Acid (AHA)	Assists with skin renewal and increases collagen production. Assists in reducing age spots. Fights free radicals
Olive Oil	Promotes cell renewal Rejuvenating Healing Hydrating Fights free radicals Replenishes the lipids in the skin.
Shea Butter	Intense moisturizing, soothing and balancing skin properties. Helps protect the skin from harsh elements
Rosehip oil	Hydrating and helps with the appearance of age spots and hyper-pigmentation. Anti-inflammatory.
Blackcurrant oil	Anti-inflammatory. Helps to maintain skin elasticity.
Lactic Acid	Alpha Hydroxy Acid. Hydrates and evens out skin tone. Improves the appearance of fine wrinkles.

How to use

Following the application of Remove, apply Gentle cleanse cream to damp face and neck, massaging with light, upward strokes. Concentrate on any areas of excessive dryness and impurities. Rinse with lukewarm water. Follow with Tone and prescribed moisturiser. It is essential to establish a morning and evening cleansing ritual.

Size

Retail: 200ml Dispenser | Professional: 500ml Dispenser

Cleanse wash



An antioxidant facial wash that gently lifts impurities from the skin while Pomegranate extract tones and soothes the skin, leaving your skin feeling supple and refreshed.

SKNtype: Balanced & Combination

Does not contain Parabens, Sulphates, Synthetic Fragrance, and Synthetic Colourants, Lanolin derivatives, Mineral oil or MIT's.

Pomegranate extract	Vitamin C increases collagen production Vitamin B promotes new cell growth Vitamin E maintains the skin's oil balance Vitamin K Improves skin elasticity Alpha Hydroxy Acids promotes cell regeneration Amino acid has an anti-ageing effect Zinc acts as an anti-inflammatory and combats acne
Witch hazel extracts	Anti-inflammatory Locks in moisture Protects against cell damage.
Citric acid	Assists with skin renewal and increases collagen production. Assists in reducing age spots Fights free radicals
Olive Oil	Vitamin A promotes cell renewal Vitamin E fights free radicals and maintains the skin's balance Polyphenols, phytosterols and avenasterols fights free radicals and repair cell membranes Anti-ageing Healing Softens and moisturises

How to use

Following the application of Remove, apply Cleanse wash to damp face and neck, massaging with light, upward strokes. Concentrate on any areas of excessive oiliness and impurities. Rinse with lukewarm water, never use hot water when cleansing as this will strip the skin of the natural oils critical in maintaining hydration levels. Follow with Tone and Moist. For excessive oiliness and for general skin health, exfoliate with Exfoliate or Exfoliate enzymatic and nourish your skin with prescribed masque twice a week. It is essential to establish a morning and evening cleansing ritual.

Size

Retail: 200ml Dispenser

Professional: 500ml Dispenser

Cleanse gel



Cleanse gel is an oil-control gel cleanser that gently lifts impurities without disturbing the skin's natural balance. Grapefruit extract assists with skin discoloration while improving the appearance of oily skin.

SKNtype: Oily Skin

Does not contain Parabens, Sulphates, Synthetic Fragrance and Synthetic Colourants, Lanolin derivatives, Mineral Oil or MIT's.



Grapefruit extract	Vitamin A promotes cell renewal Vitamin B promotes new cell growth and helps combat acne Vitamin C increases collagen production Vitamin E Maintains the skin's oil balance and repairs the skin Zinc acts as an anti-inflammatory and combats acne Carbohydrates regulate trans-epidermal water loss.
Cucumber extract	Hydrates Penetrates the skin without damaging the cell membrane Vitamin C increases collagen production and fights free radicals Removes dead skin cells Provides relief in acne breakouts and skin irritation Maintains skin's elasticity
Citric acid (AHA)	Assists with skin renewal and increases collagen production. Assists in reducing age spots Fights free radicals

How to use

Following the application of Remove, apply to damp face and neck, massaging with light, upward strokes. Concentrate on any areas of excessive oiliness and impurities. Rinse with lukewarm water, never use hot water when cleansing as this will strip the skin of the natural oils critical in maintaining hydration levels. Follow with Tone and Moist gel. For excessive oiliness and general skin health, exfoliate with Exfoliate or Exfoliate enzymatic and nourish your skin with prescribed masque twice a week. It is essential to establish a morning and evening cleansing ritual.

Size

Retail: 200ml Dispenser

Professional: 500ml Dispenser



Tone

Toners are a critical part the skin care regimen, delivering critical hydration and specific skin condition benefits such as reducing oil secretion, improving skin tone and eliminating toxins. It also has degreasing and deep cleansing properties. Balances the PH and prepares the skin for treatment. They also remove drying chlorine, salts and minerals found in tap water that can be very harsh on the skin's epidermal surface layers.

Use after your toner in the morning and evening. SKNLOGIC Toner has antioxidant benefits that will help against potential skin degeneration and contribute toward healthy looking skin.

Treat Skin Type



SKNtone



Tone is a skin conditioning toner that intensively removes all residue impurities, improves the skin's overall tone, and prepares the skin for treatment. Kiwi extract protects against potential skin degeneration. Balances the 5. and prepares it for treatment without drying the skin.

SKNtype: Most skin types

Does not contain Parabens, Sulphates, Synthetic Fragrance, and Synthetic Colourants, Lanolin derivatives, Mineral oil or MIT's.

Kiwi extract	Promotes cell renewal and combats acne Increases collagen production Maintains the skin's oil balance Improves skin elasticity Proteolytic enzymes accelerate exfoliation and unblocks pores Zinc acts as an anti-inflammatory and combats acne Carbohydrates regulates trans-epidermal water loss
Cucumber extract	Hydrates Maintains skin's elasticity Penetrates the skin without damaging the cell membrane Vitamin C increases collagen production and fights free radicals Removes dead skin cells Provides relief in acne breakouts and skin irritation
Witch hazel extract	Anti-inflammatory Locks in moisture and protects against cell damage.
Vitamin E	Antioxidant Strengthens the skin's barrier function. Reduces the appearance of fine lines and wrinkles. Helps prevent and treat sunburns and age spots Assists in maintaining the skin's oil balance
Citric Acid (AHA)	Assists with skin renewal and increases collagen production. Assists in reducing age spots Fights free radicals
Panthenol (Vit B5)	Anti-inflammatory Hydrating

How to use

Apply to the face and neck after cleansing with a cotton pad or gauze. Gently pat damp cotton pad or gauze over face and neck. Never rub your skin during or after using a skin toner. Avoid eye area. Follow with prescribed moisturiser. Use twice daily after cleansing.

Size

Retail: 200ml Dispenser

Professional: 500ml Dispenser



Exfoliate

Exfoliation is one of the keys to glowing, healthy skin. Exfoliating removes dead cells from the surface of the skin by gently abrading it. Exfoliating will keep your complexion smooth and youthful and prevent pores being blocked by dead skin cells and causing imperfections or break outs. Once the barrier of dead skin cells are removed, products can penetrate better. SKNLOGIC offers you an enzymatic exfoliator and mechanical exfoliator.

Treat Skin Type



Exfoliate



Exfoliate is a micro-exfoliating scrub that combines natural and chemical exfoliants to refine skin texture and enhance penetration of actives into skin, while papaya extract not only works as an enzyme but works to repair the skin as well.

SKNtype: Balanced, Combination & Dry Skin

Does not contain Parabens, Sulphates, Synthetic Fragrance, and Synthetic Colourants, Lanolin derivatives, Mineral oil, polyethylene beads or MIT's.



Papaya extract	Promotes cell renewal Increases collagen production Alpha Hydroxy Acids promotes cell regeneration Proteolytic enzymes break down and eliminate dead skin cells Carbohydrates regulate trans-epidermal water loss.
Apricot kernels (Powder) & Jojoba Wax beads.	Assist with a deeper exfoliation (Mechanical exfoliation). Perfectly grounded powder so that the skin is not damaged. Does not contain polyethylene beads.
Olive oil	Promotes cell renewal Fights free radicals and maintains the skin's balance Polyphenols, phytosterols and avenasterols repair cell membranes Anti-ageing Healing Softens and moisturises
Vitamin C	Significant antioxidant and healing properties. Increases collagen production.
Vitamin E	Antioxidant Reduces the appearance of fine lines. Assists in maintaining the skin's oil balance Reduces trans epidermal water loss from the skin
Citric acid (AHA)	Assists with skin renewal and increases collagen production. Assists in reducing age spots Fights free radicals
Grape seed oil	Anti-inflammatory Help prevent pores clogging and breakouts.
Rosemary Extract	Prevents environmental damage Reduces excess oil

How to use

Apply Exfoliate after cleansing and toning to damp skin. Scrub gently using circular motions, avoiding the eye area. Rinse thoroughly with lukewarm water. Follow with prescribed moisturiser. For maximum results use 2 to 3 times per week.

Size

Retail: 75ml Tube | Professional: 200ml Tube

Exfoliate enzymatic



Exfoliate enzymatic is a powerful skin polisher that combines natural and chemical exfoliants to remove dead skin cells, refine skin texture and enhance penetration of actives into skin, while papaya extract not only works as an enzyme but works to repair the skin as well. Can be used with or without steam.



SKNtype: All skin types especially acne prone.

Does not contain Parabens, Sulphates, Synthetic Fragrance, and Synthetic Colourants, Lanolin derivatives, Mineral oil or MIT's.

Papaya extract	Vitamin A promotes cell renewal Vitamin C increases collagen production Alpha Hydroxy Acids promotes cell regeneration Proteolytic enzymes break down and eliminate dead skin cells Carbohydrates regulates trans-epidermal water loss. Zinc combats acne
Protease enzyme	Breaks down detached dead skin cells from the skin surface Mimic the role of your own body's natural protease enzymes and promote decay of the protein and dissolution of dead skin cells stimulating cell renewal
Citric Acid	Assists with skin renewal and increases collagen production. Assists in reducing age spots Fights free radicals
Pineapple extract	Cell renewal Increases collagen production Proteolytic Enzymes accelerates exfoliation and unblocks pores Alpha Hydroxy Acids promotes cell regeneration Carbohydrates helps the skin retain moisture Amino acids fill in lines and wrinkles
Phyto compound blend	Healing Soothing Anti-inflammatory Firming Antioxidant Cell regeneration Anti-bacterial Calming

How to use

Apply Exfoliate enzymatic after using prescribed cleanser and Tone to damp skin to remove dead skin cells. Scrub gently using circular motions, avoiding the eye area. Rinse thoroughly with lukewarm water. Follow with prescribed moisturiser. For maximum results use 2 to 3 times per week. Pair with prescribed masque to further promote overall skin health.

Size

Retail: 75ml Tube | Professional: 200ml Tube



Optimise

Regular cleansing will remove surface dirt and grime, but only a facial masque will draw out impurities from beneath the top layers of the epidermis. Using a masque will help unclog pores so your toning, hydrating and protecting products work more effectively. Masques also help stimulate blood circulation and leave your skin feeling smoother and softer.

Treat Skin type



Multi Regenerating Masque



Stem Cell Rejuvenating Masque. Can be used as an Overnight masque.

SKNtype: Dry, Dehydrated and Ageing Skin

Does not contain Parabens, Sulphates and Synthetic Colourants, Lanolin derivatives or Mineral oil.

Fig extract	Cell renewal Increases collagen production Regulates trans-epidermal water loss
Hyaluronic Acid	A chemically crosslinked hyaluronic acid derived from a non-animal source. Hylasome EG10 has 50 times the water binding capacity of hyaluronic acid and 5 times more moisturization than hyaluronic acid after 24 hours.
Joboba Seed Oil	Soothes dry skin Anti-inflammatory. Helps with skin repair and damage control.
Shea Butter	Intense moisturizing, soothing and balancing skin properties. Helps protect the skin from harsh elements
Borage Oil	Stimulates skin cell activity and encourages skin regeneration.
Vitamin C	Increases collagen production Antioxidant
Vitamin E	Maintains the skin's oil balance Healing and Repairing Antioxidant
Retinyl Palmitate (Vitamin A)	Supports the development of collagen in the skin Helps control the formation of fine lines Restores the texture and the appearance of dry and damaged skin, while restoring the suppleness of the skin.
Dermal Stem Cells (Extracted from Seaweed)	Rejuvenation of dermal adult stem cells and fibroblasts. Anti-ageing effect on dermal adult stem cells. Stimulation of collagen synthesis Reduction of wrinkles Smoothing effect on skin microrelief.
Glycerin	Hydrating Cooling Softening

How to use

After cleansing, apply generously to face and neck, avoiding the eye area. Leave on for at least 15 minutes. Can be left on overnight. Rinse with tepid water. Use once or twice a week as prescribed.

Size

Retail: 75ml Tube | Professional: 200ml Tube

Charcoal Detox Masque



Remove sebum, decongest and detoxify the skin and minimize pores with this activated charcoal masque. Because the activated charcoal is suspended in beads you can get the benefit of the activated charcoal without the mess, making it much easier to remove.

SKNtype: Oily and Congested Skin

Does not contain Parabens, Sulphates and Synthetic Colourants, Lanolin derivatives or Mineral oil.

Grapefruit extract	Promotes cell renewal Anti-inflammatory Promotes new cell growth and helps combat acne Increases collagen production Regulate trans-epidermal water loss. Maintains the skin's oil balance and repairs the skin
Kaolin	Cleanses and purifies Healing Soothing and Nourishing Tones the skin Helps improve the blood circulation. Helps control sebum production.
Epidermist	Reduces the appearance of pores. Inhibition of bacterial growth to limit acneic tendency. Improvement of skin hydra-memory function to maintain good hydration level Antibacterial Anti-inflammatory Improvement of cellular renewal to eliminate dead cells and dirt that clog the pores Improved barrier function.
Lipobead Detox with Activated Charcoal	Detoxify – Absorb impurities and toxins and reduces sebum. Protect – From pollution by trapping volatile organic compounds (VOC's). Cleanse – Removal of impurities & oxidized sebum.
Salicylic Acid	Treats acne, blackheads, redness and inflammation.
LipoSilt	Freshwater sediments more than 30 000 years old from freshwater lakes in Eastern Europe. Higher Humic-Fulvic acid content than Dead sea mud. Humic-Fulvic acids deliver 72 naturally occurring minerals to the skin's surface, reversing cellular damage. Accelerates epidermal turnover Hydrates the skin Evens out skin tone Reduces Sebum content.
Hyaluronic Acid	Puts moisture back into the skin. Increases firmness and pliability of the skin while diminishing the appearance of fine lines and wrinkles.
Tea Tree Oil	Treat skin conditions such as spots, pimples, blemishes, dryness, infections

How to use

Apply generously to clean face and neck after cleansing. Light massage with wet fingertips to break charcoal beads. Avoid eye area. Allow masque to set for 10 – 15 minutes. Rinse thoroughly with lukewarm water. Follow with prescribed moisturiser. For flakiness exfoliate with Exfoliate or Exfoliate enzymatic before applying Masque. Use once or twice weekly. Do not use if allergic to aspirin due to Salicylic content.

Size Retail: 75ml Tube | Professional: 200ml Tube

Hydrating peel off mask



Hydrating peel off mask is a gentle hydrating mask use specifically after abrasive treatments such as Microneedling treatments. It calms the skin and leaves it nourished and hydrated. It is also used as an anti-redness care for sensitive skin.

SKNtype: Most Skin Types

Does not contain Parabens, Sulphates, Synthetic Fragrance, and Synthetic Colourants, Lanolin derivatives, Mineral oil or MIT's.

Diatomaceous Earth	Naturally occurring soft siliceous sedimentary rock. Consists of about 80%-90% silica, 2%-4% alumina and 0.5%-2% iron dioxide. Silica is used to build & maintain healthy connective tissue in skin. As we age, silica levels decrease in our bodies leading to sagging skin and fine lines.
Hydrolyzed Collagen	Collagen is used for its hydrating and stimulating properties but also as a cell growth activator and to improve elasticity of the skin. Helps to smooth and strengthen the epidermis.
Algin	Algin is a polysaccharide gained from different kinds of brown algae. It is hydrating and remineralising, improves cell metabolism and skin elasticity.

How to use

Mix briskly 25g (0.88 fl.oz) (3 scoops of 25ml scoop is 25g) of powder with 75ml (2.53 fl.oz) of water in a container, for about 2 minutes, in order to avoid the formation of lumps. Apply a thick layer on the face and neck with a spatula. Leave it on for 20 minutes. Remove the mask starting from the neck. Use a damp facial sponge to remove residues.

Size

Professional: 250gr Jar



Restore

SKNLOGIC gives you targeted treatments to restore your skin's health by addressing your skin's needs.

Treat Skin condition



Eye revitalise



Eye revitalise is a soothing eye relief moisturising gel that helps to clear congestion around the eyes that causes puffiness and dark under eye circles. Mandarin extracts assist in purifying and re-balancing the skin while promoting a finer textured skin. Penetrates quickly so can be used prior to make-up application.

SKNcondition: Dehydrated, Problematic and Mature skin

Mandarin extract	Vitamin C increases collagen production Vitamin A activates collagen production and increases cell proliferation Vitamin B Promotes new cell growth and combats acne Carbohydrates regulates trans-epidermal water loss Amino acids regenerates and firms the skin
Olive oil	Vitamin A promotes cell renewal Vitamin E fights free radicals and maintains the skin's balance Polyphenols, phytosterols and avenasterols fights free radicals and repair cell membranes Anti-ageing Softens and moisturises
Cucumber extract	Hydrates Penetrates the skin without damaging the cell membrane Vitamin C increases collagen production and fights free radicals Removes dead skin cells Provides relief in acne breakouts and skin irritation Maintains skin's elasticity
Hydrolysed wheat protein	Increases the firmness of the skin
Vitamin B5	Holds and retains moisture. Calms irritated skin and promotes healing Reduces inflammation

How to use

Apply in morning and evening around the eyes. Follow by gently massaging the area for 2-3 minutes using your ring finger. Apply light pressure in the inside corners of your eyes to increase lymph flow. Never pull the skin. Follow with prescribed moisturiser.

Size

Retail: 15ml Tube

Eye cream



Eye cream is a rejuvenating blend of ingredients infused with the anti-ageing benefits of apple extract to revitalize the skin. Reduces the appearance of fine lines and wrinkles while improving the texture, tone and colour of the skin around the delicate eye area.

SKNcondition: Dehydrated, Mature and Pre-mature ageing skin

Does not contain Parabens, Sulphates, Synthetic Fragrance, and Synthetic Colourants, Lanolin derivatives, Mineral oil or MIT's.

Apple extract	Vitamin C increases collagen Vitamin A promotes cell renewal Vitamin B promotes new cell growth and is combats acne Vitamin E maintains the skin's oil balance Vitamin K improves skin elasticity Zinc acts as an anti-inflammatory and combats acne Alpha Hydroxy Acids promotes cell regeneration Amino acids regenerates and firms Phytosterols encourages collagen production
Hydrolysed collagen	Balances the water content of the skin and helps keep it soft and smooth.
Evening primrose oil	Promotes healing Binds moisture Softens and improves firmness of the skin.
Citric Acid	Assists with skin renewal and increases collagen production. Assists in reducing age spots Fights free radicals
Vitamin C	Increases collagen production
Vitamin E	Maintains the skin's oil balance Healing and Repairing Antioxidant
Glycerin	Hydrating Cooling Softening

How to use

Apply in morning and evening around the eyes. Follow by gently massaging the area for 2-3 minutes using your ring finger. Apply light pressure in the inside corners of your eyes to increase lymph flow. Never pull the skin. Follow with prescribed moisturiser.

Size

Retail: 15ml Tube

Boost



Boost is a concentrated brightening and rejuvenating cream that combats prematurely-ageing skin conditions while it repairs and protects and brightens dull and tired skin. Infused with the anti-ageing benefits of apple extract to revitalize the skin. Reduces the appearance of fine lines and wrinkles while improving the texture, tone and colour of the skin. Can also be used on dull skin due to season changes.

SKNcondition: Dehydrated, Mature, Pre-mature ageing and dull skin.

Does not contain Parabens, Sulphates, Synthetic Fragrance, and Synthetic Colourants, Lanolin derivatives, Mineral oil or MIT's.

Apple extract	Increases collagen Promotes cell renewal Promotes new cell growth and is combats acne Maintains the skin's oil balance Improves skin elasticity Alpha Hydroxy Acids promotes cell regeneration Amino acids regenerates and firms Encourages collagen production
Sunflower oil	Moisturises Vitamin C increases collagen production Vitamin A promotes cell renewal Vitamin E fights free radicals
Olive oil	Vitamin A promotes cell renewal Vitamin E fights free radicals and maintains the skin's balance Anti-ageing Healing Hydrating Protect the skins barrier function.
Vitamin C	Significant antioxidant and healing properties.
Vitamin E	Antioxidant Helps prevent and treat sunburns and age spots Reduces the appearance of fine lines and wrinkles.
Hydrolysed collagen	Balances the water content of the skin and helps keep it soft and smooth.
Citric Acid	Assists with skin renewal and increases collagen production.
Shea Butter	Intense moisturizing, soothing and balancing skin properties. Helps protect the skin from harsh elements
Niacinamide	Helps repair the skin's lipid barrier. Minimizes redness and blotchiness Minimizes pore appearance Regulates oil Brightens the skin Antioxidant Minimizes fine lines and wrinkles
Hyaluronic Acid	Has the capacity to attract and hold vast amounts of moisture. Revitalises the skin making it look and feel softer and smoother, increasing firmness and pliability of the skin while diminishing fine lines and wrinkles.
Retinyl Palmitate	Supports the development of collagen in the skin Helps control the formation of fine lines Restores the texture and the appearance of dry and damaged skin

How to use

Apply to cleansed face and neck with light upward strokes. Wait for cream to absorb before applying additional products. Use twice daily. Follow with prescribed moisturiser during the day and Night Plus in the evening to further enhance the appearance and health of the skin.

Size | Retail: 75ml Tube

Night plus



An age defence treatment cream with growth factor peptide and Hyaluronic acid that combats prematurely-ageing skin conditions while it repairs and protects. Reduces the appearance of fine lines and wrinkles while improving the texture and tone of the skin. Can only be used in the evening.

SKNcondition: Mature and Pre-maturely ageing skin

Does not contain Parabens, Sulphates, and Synthetic Colourants, Lanolin derivatives, Mineral oil or MIT's.



Apple extract	Vitamin C increases collagen Vitamin A & B promotes cell renewal Vitamin E maintains the skin's oil balance Vitamin K improves skin elasticity Zinc acts as an anti-inflammatory. Alpha Hydroxy Acids promotes cell regeneration Amino acids firms Phytosterols encourages collagen production
Grape seed oil	Contains polyphenols which help slow the process of ageing Anti-inflammatory Antioxidant Prevents pores clogging
Jjoba Seed oil & Jjoba Butter	Soothes dry skin Anti-inflammatory. Helps with skin repair and damage control.
Retinyl Palmitate (Vitamin A)	Supports the development of collagen in the skin Helps control the formation of fine lines Restores the texture and the appearance of dry and damaged skin, while restoring the suppleness of the skin.
Vitamin C	Increases collagen production.
Vitamin E	Antioxidant Assists in maintaining the skin's oil balance Reduces the appearance of fine lines and wrinkles. Helps prevent and treat sunburns and age spots
Shea Butter	Intense moisturizing, soothing and balancing skin properties. Helps protect the skin from harsh elements
Beeswax	Locks in moisture and protects the skin from damaging environmental factors. Softening Anti-inflammatory. Anti-bacterial Rejuvenating
CytoRegulin™ Heptapeptide -34	Heptapeptide activates TGFβ1 (transforming growth factor) which is responsible for stimulating key anti-aging pathways leading to healing and the restoration of the extracellular matrix. Modulates matrix related genes and build collagen.
Hyaluronic Acid	Has the capacity to attract and hold vast amounts of moisture. Revitalises the skin making it look and feel softer and smoother, increasing firmness and pliability of the skin while diminishing the appearance of fine lines and wrinkles.

How to use

Apply to cleansed face and neck with light upward strokes in the evening only. For extra moisture apply moisturiser after application.

Size | Retail: 50ml Tube

Clarify



A skin-clarifying day or night treatment that helps clear skin, calm inflammation and prevent future breakouts. Banana extract soothes while treating blemishes and moisturising the skin.

SKNcondition: Problematic skin

Does not contain Parabens, Sulphates, Synthetic Fragrance, and Synthetic Colourants, Lanolin derivatives, Mineral oil or MIT's.

Banana extract	Vitamin A promotes cell renewal and improves the appearance of blemishes Vitamin B promotes new cell growth Vitamin C increases collagen production Vitamin E maintains the skin's oil balance Vitamin K improves the elasticity Zinc combats acne Carbohydrates regulates trans-epidermal water loss
Grape seed oil	Rich in vitamins, minerals and protein Contains polyphenols which help slow the process of ageing Anti-inflammatory Antioxidant Help prevent pores clogging and breakouts.
Witch hazel extract	Anti-inflammatory Locks in moisture and protects against cell damage.
Hydrolysed collagen	Balances the water content of the skin and helps keep it soft and smooth.
Citric Acid	Assists with skin renewal and increases collagen production. Assists in reducing age spots Antioxidant
Salicylic Acid	Treats acne, blackheads, redness and inflammation.
Tea Tree Oil	Anti-inflammatory Anti-bacterial Treats spots and pimples.

How to use

After cleansing and toning, apply sparingly to cleansed face and massage into skin. Use during the day and/or night as prescribed.

Size

Retail: 75ml Tube

***Coming Soon! New Formulation with Salicylic Acid and Tea Tree oil added.**

Diminish day



A day cream with pigment-regulating formulation that provides fading of the skin and free-radical protection.

SKNcondition: Hyper pigmented skin

Does not contain Parabens, Sulphates, Synthetic Fragrance, and Synthetic Colourants, Lanolin derivatives, Mineral oil or MIT's.

Sunscreen	Physical & Chemical UVA & UVB sunscreens. Contains Titanium dioxide.
Bearberry extract (Alpha Arbutin)	5% Bearberry extract Reduces melanin production by inhibiting tyrosinase. Effectively lightens spots & dark areas on the skin.
Phyto compound blend	5% Botanical blend (Eco-certified) 7 Swiss Alpine Plant extracts Healing Soothing Anti-inflammatory Firming Antioxidant Cell regeneration Anti-bacterial Calming
Stearic Acid	Replenishes the lipids in the top layers of the skin.
Vitamin C & E	Antioxidant
Raspberry extract	Vitamin A promotes cell renewal Vitamin B promotes new cell growth Vitamin C increases collagen production Vitamin K improves skin elasticity and helps heal the skin Zinc acts as an anti-inflammatory and combats acne Helps repair damaged caused by UV rays
Citric Acid	Assists with skin renewal and increases collagen production. Assists in reducing age spots Antioxidant
Glycerin	Hydrating Cooling Softening

How to use

After cleansing and toning, apply sparingly to cleansed face and massage into skin. Use during the day. Follow with Protect SPF. For extra hydration, prescribed day and night moisturiser can be used over treatment.

Size

Retail: 50ml Tube

Diminish night



A night cream with pigment-regulating formulation that provides fading of the skin and free-radical protection

SKNtype & SKNconcern: Hyper pigmented skin

Does not contain Parabens, Sulphates, Synthetic Fragrance and Synthetic Colourants, Lanolin derivatives, Mineral oil or MIT's.

Bellis Perennis (Daisy extract)	5% Daisy extract Skin lightening agent, Pigment inhibitor & Reduces Melanin production
Bearberry extract (Alpha Arbutin)	5% Bearberry extract Reduces melanin production by inhibiting tyrosinase. Effectively lightens spots & dark areas on the skin.
Phyto compound blend	8% Botanical blend (Eco-certified) 7 Swiss Alpine Plant extracts Healing Soothing Anti-inflammatory Firming Antioxidant Cell regeneration Anti-bacterial Calming
Stearic Acid	Replenishes the lipids in the top layers of the skin.
Vitamin C & E	Antioxidant
Raspberry extract	Vitamin A promotes cell renewal Vitamin B promotes new cell growth Vitamin C increases collagen production Vitamin K improves skin elasticity and helps heal the skin Zinc acts as an anti-inflammatory and combats acne Helps repair damage caused by UV rays
Citric Acid	Assists with skin renewal and increases collagen production. Assists in reducing age spots Antioxidant
Glycerin	Hydrating Cooling Softening

How to use

After cleansing and toning, apply sparingly to cleansed face and massage into skin. Use during the night only.

Size

Retail: 50ml Tube

Hydrating serum



An intense treatment for additional hydration and anti-ageing support. A light cream concentrated serum based on a high hydration profile of ingredients that delivers immediate moisture to saturate and refresh dehydrated skin. The serum also compliments the rejuvenation process.

SKNcondition: Dry, Dehydrated or Mature skin.

Does not contain Parabens, Sulphates, Synthetic Fragrance and Synthetic Colourants, Lanolin derivatives, Mineral oil or MIT's.

Hyaluronic Acid	Is a glycosaminoglycan which is a vital natural substance that is a youth-supporting part of skin. Has the capacity to attract and hold vast amounts of moisture. Revitalises the skin making it look and feel softer and smoother, increasing firmness and pliability of the skin while diminishing the appearance of fine lines and wrinkles.
Argan oil	Sterolins help your skin retain moisture. Antioxidants. Improve elasticity and cell strength. Help reduce breakouts.
Grape Seed oil	Slows the process of ageing Anti-inflammatory Antioxidant Help prevent pores clogging and breakouts.
Olive oil	Cell renewal Anti-ageing Healing Softens and hydrates
Vitamin C & E	Antioxidant
Fig Extract	Cell renewal Increases collagen production Regulates trans-epidermal water loss
Shea Butter	Intense moisturizing, soothing and balancing skin properties. Helps protect the skin from harsh elements
Glycerin	Hydrating Cooling Softening
Lactic Acid	Alpha Hydroxy Acid. Hydrates and evens out skin tone. Improves the appearance of fine wrinkles.
Glycolic Acid	Increases cell turnover. Hydrating. Improves the appearance of fine lines and wrinkles.
Aloe Vera Extract	Cooling Anti-inflammatory Hydrating Boosts healing of damaged skin

How to use

After cleansing and toning, apply sparingly to cleansed face. Apply prescribed moisturiser. Should only be introduced after being on the basic products for at least 4 - 8 weeks. Use in the evenings only. Must use with a broad-spectrum SPF of at least 30. When using for the first time, the airless pump will need to be pumped a few times until the liquid comes out. Due to the active ingredients you might experience breakouts during the first week of use.

Size | Retail: 30ml Airless Pump

Multi active lotion



Includes a high concentration of Alpha and Beta Hydroxy acids (14%) in a lightweight emulsion as an intensive treatment for increased cell turnover to restore skin suppleness, clarity and texture. This at-home leave on skin peel optimizes skin rejuvenation, treats hyper-pigmentation, dehydration and problematic skin.

SKNcondition: Dehydrated, Mature, Hyper-pigmented or Problematic skin.

Does not contain Parabens, Sulphates, Synthetic Fragrance and Synthetic Colourants, Lanolin derivatives, Mineral oil or MIT's.

Glycolic Acid	Increases cell turnover. Hydrating. Improves the appearance of fine lines and wrinkles. Boosts collagen production.
Salicylic Acid	Treats acne, blackheads, redness and inflammation.
Lactic Acid	Alpha Hydroxy Acid. Hydrates and evens out skin tone. Improves the appearance of fine wrinkles and hyperpigmentation
Citric Acid	Assists with skin renewal and increases collagen production. Assists in reducing age spots Antioxidant
Vitamin C & E	Antioxidant
Pineapple Extract	Promotes cell renewal Increases collagen production Proteolytic Enzymes accelerates exfoliation and unblocks pores Helps the skin retain moisture
Panthenol (Vitamin B5)	Hydrating. Anti-inflammatory. Counteracts Bacteria. Healing.
Glycerin	Hydrating Cooling Softening
Phyto Compound Blend	8% Botanical blend (Eco-certified) 7 Swiss Alpine Plant extracts Healing Soothing Anti-inflammatory Firming Antioxidant

How to use

After cleansing and toning, apply sparingly to cleansed face every second evening. Apply prescribed moisturiser. Should only be introduced after being on the basic products for at least 12 weeks. Do not use on irritated skin. Mild tingling may occur. Use in the evenings only. Must use with a broad spectrum SPF of at least 30. When using for the first time, the airless pump will need to be pumped a few times until the liquid comes out. Due to the active ingredients you might experience breakouts during the first week of use. Do not use while busy with Chemical peel treatments. Do not use if allergic to aspirin.

Size | Retail: 50ml Airless Pump

C15 Booster



This concentrated booster with 15% pure vitamin C dramatically brightens uneven skin while improving the appearance of wrinkles and fine lines. This antioxidant powerhouse includes Vitamin E & Ferulic Acid, improving the appearance of uneven skin tone, dark spots and pigmentation while brightening dull and lackluster skin.

SKNcondition: Hyper-pigmented, Dehydration, Ageing.

Does not contain Parabens, Sulphates, Synthetic Fragrance and Synthetic Colourants, Lanolin derivatives, Mineral oil or MIT's.

Vitamin C 15%	Promotes collagen production, which has the potential to thicken the dermis, diminish fine lines, and is essential for firm, youthful skin. Powerful antioxidant that protects skin cells from damaging free radicals caused by UV exposure. Inhibits melanin production in the skin, which helps to lighten hyperpigmentation and brown spots, even out skin tone, and enhance skin radiance. Helps to repair damage from sun exposure and collagen loss by encouraging healthy cell turnover and regeneration.
Vitamin E	Antioxidant Reduces the appearance of fine lines and wrinkles Helps prevent and treat sunburns and age spots.
Ferulic Acid	Antioxidant that works to boost the effects of other antioxidants such as Vitamin C & E. Helps to protect overall skin integrity by reducing the development of fine lines, spots, and wrinkles
Hyaluronic Acid	Has the capacity to attract and hold vast amounts of moisture. Revitalises the skin making it look and feel softer and smoother, increasing firmness and pliability of the skin while diminishing the appearance of fine lines and wrinkles.
Glycerin	Hydrating Cooling Softening
Panthenol (Vitamin B5)	Hydrating. Anti-inflammatory. Counteracts Bacteria. Healing.

How to use

After cleansing and toning, apply 2 – 3 drops to cleansed face daily (in the mornings or evenings). Use alone or add to your moisturiser, serum or masque. Should only be introduced after being on the basic products for at least 4 weeks. Do not use on irritated skin. Mild tingling may occur. Must use with a broad spectrum SPF of at least 30. Due to the active ingredients you might experience breakouts during the first week of use. Can be applied under the eye area, avoiding the eye itself. Use directly after Micro needling treatment for deeper penetration of the actives in the booster.

Size | Retail: 30ml – Professional – 50ml

B10 Booster



This concentrated 10% niacinamide serum booster dramatically improves uneven skin tone and refines the appearance of pore size, skin texture and fine lines.

SKNcondition: Congestion, Uneven Skin Texture, Hyper-pigmentation, Dehydration, Ageing.

Does not contain Parabens, Sulphates, Synthetic Fragrance and Synthetic Colourants, Lanolin derivatives, Mineral oil or MIT's.



Niacinamide 10% Vitamin B3	Helps repair the skin's lipid barrier. Minimizes redness and blotchiness Minimizes pore appearance Regulates oil Treats hyperpigmentation. Antioxidant Minimizes fine lines and wrinkles Treats acne.
Witch Hazel Extract	Restores the skin's pH balance Anti-inflammatory Antibacterial Healing Reduces excess oil Locks in moisture Protects against cell damage.
Epidermist	Reduces the appearance of pores. Inhibition of bacterial growth to limit acneic tendency. Improvement of skin hydra-memory function to maintain good hydration level Antibacterial Anti-inflammatory Improvement of cellular renewal to eliminate dead cells and dirt that clog the pores Improved barrier function.
Hyaluronic Acid	Has the capacity to attract and hold vast amounts of moisture. Revitalises the skin making it look and feel softer and smoother, increasing firmness and pliability of the skin while diminishing the appearance of fine lines and wrinkles.
Glycerin	Hydrating Cooling Softening

How to use

After cleansing and toning, apply 2 – 3 drops to cleansed face daily (in the mornings or evenings). Use alone or add to your moisturiser, serum or masque. Should only be introduced after being on the basic products for at least 4 weeks. Do not use on irritated skin. Mild tingling may occur. Must use with a broad spectrum SPF of at least 30. Due to the active ingredients, you might experience breakouts during the first week of use. Can be applied under the eye area, avoiding the eye itself. Use directly after Micro needling treatment for deeper penetration of the actives in the booster.

Size | Retail: 30ml – Professional – 50ml

Retinol 0.5 & 1 Booster



This lightweight, concentrated booster with 0.5% (for home use) and 1% (for professional use) retinol helps to even skin tone, renew radiance, brighten, improve the appearance of wrinkles and create a smooth complexion.

SKNcondition: Congestion, Uneven Skin Texture, Hyper-pigmentation, Signs of Ageing such as Fine lines and wrinkles and loss of elasticity.

Does not contain Parabens, Sulphates, Synthetic Fragrance and Synthetic Colourants, Lanolin derivatives, Mineral oil or MIT's.



Retinol (0.5% home use/ 1% professional use)	<ul style="list-style-type: none">Reduces skin photo-damage.Improves the appearance of fine lines and wrinkles.Improves firmness and elasticity of the skin.Improves skin texture and uneven skin tone.Appearance of dark spots is reduced, skin appears more even.Increases synthesis of collagens and induces dermal elastin and fiber formation.Increased thickness in the skin and increase in cell renewal.Reduces acne outbreaks by preventing dead cells from clogging pores.
Soyaglycone	<ul style="list-style-type: none">Encapsulated preparation of genistein, the biologically active form of the most abundant soy isoflavone. Genistein is a powerful collagen booster: it strongly stimulates the production of collagen but also prevents its degradation by matrix metalloproteinases.Delivers a visible lift.Reduces fine lines and wrinkles.Re-densifies and firms the skin.

How to use

After cleansing and toning, apply 2 – 3 drops to cleansed face daily (in the evenings). Use alone or add to your moisturiser, serum or masque. Should only be introduced after being on the basic products for at least 4 weeks. Do not use on irritated skin. Mild tingling may occur. Must use with a broad spectrum SPF of at least 40. Can be applied under the eye area, avoiding the eye itself. Use directly after Micro needling treatment for deeper penetration of the actives in the booster. Retinol can cause sensitivity, it is wise to follow one of the below approaches to help your skin adjust to Retinol:

- 1. The Sandwiching Method:** Applying moisturiser before retinol helps keep dryness at bay, and moisturising afterward help soothe and calm irritation.
- 2. The Build Up Method:** Start slow. Use a pea-sized amount once or twice a week. As your skin adjusts, you can begin using it more frequently.
- 3. The Rinse-off Method** – Apply retinol to moisturised skin and let it sit for 5 minutes. Then gently wash it off. Increase the amount time to 10 minutes, then 15, then 30, until skin can handle overnight application.

Do not use while on a Chemical peel treatment regimen (wait 1 week after last Chemical peel treatment), or while using Multi Active Lotion, products containing Benzoyl Peroxide or high concentrations of Alpha & Beta Hydroxy Acids. Not prescribed for diabetics or during pregnancy.

Size | Retail: 30ml at 0.5% concentration – Professional – 50ml at 1% concentration



Hydrate

A basic law of beauty is that everyone, no matter the skin type, should moisturise. Even if your skin is oily, it will benefit from moisturisers. SKNLOGIC's moisturisers help protect the skin's natural defenses while continuously controlling the skin's loss of moisture.

Treat Skin type



Moist supreme



A moisture-replenishing day and night cream designed to combat dry skin and reduce the signs of premature ageing. Fig extract an excellent hydrator, also provides a gentle tightening effect to the skin.

SKNtype: Dry skin. Am & Pm

Does not contain Parabens, Sulphates, Synthetic Fragrance, and Synthetic Colourants, Lanolin derivatives, Mineral oil or MIT's.



Fig extract	Vitamin A promotes cell renewal Vitamin B promotes new cell growth and combats acne Vitamin C increases collagen production Proteolytic enzymes remove dead skin cells and unblock pores Carbohydrates regulates trans-epidermal water loss Phytosterols encourages collagen production
Sunflower oil	Rich in essential fatty acids and helps the skin retain its moisture. Vitamin E heals and helps to prevent scarring. Improves inflammatory conditions such as acne and eczema. It absorbs easily and is non-comedogenic.
Grape seed oil	Rich in vitamins, minerals and protein Contains polyphenols which help slow the process of ageing Anti-inflammatory Antioxidant Help prevent pores clogging and breakouts.
Vitamin E	Antioxidant effect by suppressing harmful effects of free radicals and protects skin cells and membranes. Reduces the appearance of fine lines and wrinkles. Helps prevent and treat sunburns and age spots Assists in maintaining the skin's oil balance
Vitamin C	Significant antioxidant and healing properties. Increases collagen production.
Citric Acid	Assists with skin renewal and increases collagen production. Assists in reducing age spots Antioxidant
Glycerin	Hydrating Cooling Softening

How to use

Apply over damp face and neck with light upward strokes, after cleansing, toning and any other prescribed skin preparations. Use in the morning and evenings.

Size

Retail: 75ml Tube

Professional: 200ml Tube

Moist



A moisture-replenishing day and night cream that hydrates, rejuvenates and balances the skin. Pomegranate extract acts as a natural toner while protecting the skin from free radicals. Especially designed for Balanced and Combination skins. Am & Pm

SKNtype: Balanced & Combination skin

Does not contain Parabens, Sulphates, Synthetic Fragrance, Synthetic Colourants, and Lanolin derivatives, Mineral Oil or MIT's.



Pomegranate extract	Vitamin C increases collagen production Vitamin B promotes new cell growth Vitamin E maintains the skin's oil balance Vitamin K Improves skin elasticity Alpha Hydroxy Acids promotes cell regeneration Amino acid has an anti-ageing effect
Grape seed oil	Rich in vitamins, minerals and protein Contains polyphenols which help slow the process of ageing Anti-inflammatory, Antioxidant Help prevent pores clogging and breakouts.
Vitamin E	Antioxidant effect by suppressing harmful effects of free radicals and protects skin cells and membranes. Reduces the appearance of fine lines and wrinkles. Helps prevent and treat sunburns and age spots Assists in maintaining the skin's oil balance
Vitamin C	Significant antioxidant and healing properties. Increases collagen production.
Wheat germ oil	Hydrating Antioxidant Healing
Sweet Almond oil	Rejuvenating Softening Soothing.
Citric acid	Assists with skin renewal and increases collagen production. Assists in reducing age spots Antioxidant
Glycerin	Hydrating Cooling Softening

How to use

Apply over damp face and neck with light upward strokes, after cleansing, toning and any other prescribed skin preparations. Use in the mornings and evenings.

Size

Retail: 75ml Tube

Professional: 200ml Tube

Moist gel



A lightweight gel that works to combat surface dehydration while balancing the skin and improving the appearance of oily skin. Grapefruit reduces fine wrinkles and assist with skin discolouration.

Am & Pm

SKNtype: Oily skin

Does not contain Parabens, Sulphates, Synthetic Fragrance, and Synthetic Colourants, Lanolin derivatives, Mineral oil or MIT's.



Grapefruit extract	Vitamin A promotes cell renewal Vitamin B promotes new cell growth and helps combat acne Vitamin C increases collagen production Vitamin E Maintains the skin's oil balance and repairs the skin Zinc acts as an anti-inflammatory and combats acne Carbohydrates regulate trans-epidermal water loss.
Cucumber extract	Hydrates Penetrates the skin without damaging the cell membrane Vitamin C increases collagen production and fights free radicals Removes dead skin cells Provides relief in acne breakouts and skin irritation Maintains skin's elasticity
Hydrolysed collagen	Balances the water content of the skin and helps keep it soft and smooth.
Olive Oil	Vitamin A promotes cell renewal Vitamin E fights free radicals and maintains the skin's balance Polyphenols, phytosterols and avenasterols fights free radicals and repair cell membranes Anti-ageing Healing Softens and moisturises
Wheat Germ oil	Hydrating Antioxidant Healing
Glycerin	Hydrating Cooling Softening

How to use

Apply over damp face and neck with light upward strokes, after cleansing, toning and any other prescribed skin preparations. Use in the mornings and evenings.

Size

Retail: 75ml Tube

Professional: 200ml Tube

Omega Face oil



A lightweight facial oil that can be used as a moisturiser, treatment product or primer. Contains Omega 3, 5,6,7 & 9. It can be used as a moisturiser for sensitive skin. Am & Pm.

SKNtype: All skin types especially Dry and Sensitive Skin

Does not contain Parabens, Sulphates, Synthetic Fragrance, and Synthetic Colourants, Lanolin derivatives, Mineral oil or MIT's.

Marula Oil	Omega 6 & 9. Repair damage caused by pollutants, reduce the appearance of maturing skin, prevent skin from losing moisture. Enhances skin elasticity and firmness while facilitating healing of irritation, inflammation and redness.
Borage Oil	Omega 6. Stimulates skin cell activity and encourages skin regeneration. Contains high levels of gamma-linoleic acid (GLA), making it useful in treating all skin disorders, particularly allergies, dermatitis, inflammation, and irritation. Borage penetrates the skin easily
Olive Oil	Omega 3 & 6. Promotes cell renewal Rejuvenating Healing Hydrating Fights free radicals Replenishes the lipids in the skin.
Pomegranate Oil	Omega 5. Antioxidant promotes new cell growth Maintain the skin's oil balance Anti-inflammatory.
Macadamia Oil	Omega 7 & 9. Anti-inflammatory Help restore the skin's barrier function and reduce water loss. Cleans pores making them appear smaller.
Sunflower Oil	Omega 6 & 9. Helps the skin retains its moisture. Vitamin E heals and helps to prevent scarring. Improves inflammatory conditions such as acne and eczema. Also contains natural ceramides.
Argan oil	Omega 9. Sterolins help your skin retain moisture. Antioxidants. Improve elasticity and cell strength. Help reduce breakouts. Anti-inflammatory.
Camelina Oil	With enhanced stability and penetration ability Omega 3. Antioxidant Improves skin tone.
Olus Oil	With enhanced stability and penetration ability Omega 3 and 6. Reduces water loss Softens and soothes skin.
Vitamin C	Significant antioxidant and healing properties. Increases collagen production.
Vitamin E	Assists in maintaining the skin's oil balance. Antioxidant.

How to use

Retail: Apply thin layer to clean dry skin after cleansing daily in the mornings and/or evenings as prescribed. Use a very small amount to ensure that all the oil penetrates and does not leave an oily film. Can be used as a primer underneath make-up. Contain nut oils.

Professional: Use underneath a treatment masque or for extra hydration at the end of the treatment underneath moisturizer. During micro needling treatment use as gliding oil.

Size

Retail: 30ml Dropper bottle | Professional: 50ml Dropper bottle

Massage cream

SKNLOGIC massage cream was created to fill the need for a cream that not only works as a lubricant but also offers benefits contributing to the skin care regime. It has all the benefits of grape seed & sunflower oils with the soothing and anti-inflammatory benefits of banana extract.

SKNtype & SKNconcern: All skin types

Does not contain Parabens, Sulphates, Synthetic Fragrance, and Synthetic Colourants, Lanolin derivatives, Mineral oil or MIT's.



Banana extract	Vitamin A promotes cell renewal Vitamin B promotes new cell growth Vitamin C increases collagen production Vitamin E maintains the skin's oil balance Vitamin K improves the elasticity Zinc combats acne Carbohydrates regulates trans-epidermal water loss
Grape seed oil	Contains polyphenols which help slow the process of ageing Anti-inflammatory Antioxidant Help prevent pores clogging and breakouts.
Olive Oil	Vitamin A promotes cell renewal Anti-ageing Healing Softens and moisturises
Sweet Almond Oil	Anti-ageing Softening Soothing.
Sunflower oil	Rich in essential fatty acids and helps the skin retains its moisture. Vitamin E heals and helps to prevent scarring. Improves inflammatory conditions such as acne and eczema
Vitamin C	Increases collagen production.
Vitamin E	Antioxidant Reduces the appearance of fine lines and wrinkles. Helps prevent and treat sunburns and age spots Assists in maintaining the skin's oil balance
Citric Acid	Assists with skin renewal and increases collagen production. Assists in reducing age spots Antioxidant
Wheat germ oil	Hydrating Antioxidant Healing

How to use

After cleansing and toning gently massage the face, neck and décolleté. Can be used over the entire body. For Professional use only.

Size | Professional: 200ml Tube

Protect



It has never been more important to protect your skin from the environmental factors such as pollution and the sun's harmful rays. SKNLOGIC

protect not only protects your skin from its worst enemy, the sun, it also aids in healing the skin after sunburn.

SPF Factor Comparisons:

SPF 5 – 80% protection

SPF 8 – 89% protection

SPF 15 – 93% protection

SPF 20 – 95% protection

SPF 30 – 98% protection

A sunscreen should offer Chemical Sunscreens & Physical Sun blocks with UVA & UVB protection as well as Antioxidants.

Chemical Sunscreen (absorbing sunscreen) absorbs harmful UV rays while Physical Sun blocks (reflecting sunscreen) reflect and scatter rays.

The inclusion of the antioxidants offers protection of cellular DNA and stem cells and the harmful effects of free radicals.

UV Protection is not enough

Blue light (also known as high energy visible light, or HEV) is the strong light that emits from the screens on cell phones, computers, tablets, and TVs, as well as from fluorescent and LED lighting. The sun also emits blue light, so you're exposed to it when you're outside, too.

Research indicates that blue light can reach deeper into our skin than UVA and UVB rays and results in the following effects.

- Increase in oxidative stress and free radical production in the deeper layers of the skin
- Hyperpigmentation, similar effect of UVA.
- Decrease in the proteins that support skin elasticity.
- Inflammation, one of the leading causes of premature ageing.
- Degradation of the skin barrier.

Blue light and Infrared light protection is included in our NEW Protect SPF 40.

Treat Skin type



Protect SPF 40



Protect is a full spectrum sun protection cream that provides a certified high broad-spectrum UVA/UVB protection and anti-ageing benefits. It goes beyond UVA and UVB protection to help defend from blue light (digital pollution) and pollution and Infrared light emitted by the sun. It repairs DNA damage caused by free radicals while mitigating the damage from environmental and digital exposure. Protect is a non-whitening formula and is suitable for all skin types.



Does not contain Octyl Methoxycinnamate.

SKNtype: All skin types

Does not contain Parabens, Sulphates, Synthetic Fragrance and Synthetic Colourants, Lanolin derivatives, Mineral Oil or MIT's.

Raspberry Seed Oil with enhanced Omega 3 & 6	Dermo-epidermic regenerating and revitalizing. Stimulate tissue regeneration Reparation of injured Stratum Corneum Recovery of barrier function Increased collagen synthesis.
Titanium Dioxide	Physical Mineral Sunblock UV Light Reflecting
Retinyl Palmitate	An antioxidant that occurs naturally in the skin and fights free radicals Improves skin tone.
Octocrocyrene	Chemical sunscreen One of the most compatible light protection filters.
Avobenzone	Chemical sunscreen
Vitamin C	Antioxidant Increases collagen production. Protects against pollution.
Vitamin E	Antioxidant effect by suppressing harmful effects of free radicals and protects skin cells and membranes. Reduces the appearance of fine lines and wrinkles Helps prevent and treat sunburns and age spots. Protects against pollution.
Blueshield®	French red bell pepper extract Blue light pollution defender. Carotenoids are natural pigments that protect against radiation. Protects cellular DNA and collagen from blue-light induced oxidation and degradation. Protects against Infrared light.
Stearic Acid	Protects skin against Trans-epidermal water loss. Improves skin's protective barrier.
Borage Oil	Stimulates skin cell activity and encourages skin regeneration. Contains high levels of gamma-linoleic acid (GLA), making it useful in treating all skin disorders, particularly allergies, dermatitis, inflammation, and irritation. Borage penetrates the skin easily

How to use

After cleansing, toning and moisturising gently massage the face, neck and décolleté. Make-up should only be applied a few minutes after application of Protect to allow the product to settle on the skin.

Size Retail: 75ml Tube | Professional: 200ml Tube



Skin Mist – Hypochlorous Acid

Hypochlorous Acid (HOCl) exists in your body, it is a substance naturally created by our white blood cells that is safe to use for all ages and skin types.

HOCl attacks invading pathogens, breaking down the cell walls before destroying unhealthy invaders. In the body HOCl halts the replication or growth process of those harmful cells. Outside the body, HOCl kills dangerous micro-organisms, protecting the skin against bacteria, viruses and fungi. This antimicrobial acid is a very effective first line of defense for your skin. It is your body's natural response to combat pathogens and destroy infectious agents without harming the skin's protective barrier.

Spraying hypochlorous acid onto your skin offers your skin the extra backup it needs when it comes to protecting itself. In addition to its protective function it also has restorative qualities that helps repair damaged skin and can even prevent scar formation.

The best thing about HOCl is that it is nontoxic and handles this hard work while being incredibly mild on your skin, so even the most sensitive skin types can benefit from this product. It won't dry out the skin or cause any burning or irritation on the skin. Sknlogic has utilized this miracle ingredient in two facial mists with varying concentrations of HOCl to perform different functions.

Treat Skin Type



Renew mist (Hypochlorous Light)

Renew mist is ideal for you if your focus is to rejuvenate skin or reduce the signs of environmental damage and ageing. Renew mist helps to restore the skin to its optimum health.

SKNtype: Most skin types



Paraben Free



Safe during pregnancy



Mineral oil free



Silicon Free



Hypo-allergenic



Sulphate Free



Vegan



Cruelty Free



No Colourants or Synthetic Fragrances



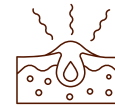
No MIT's



strengthens skin barrier



calms inflammation and redness



fighting acne-causing bacteria



treat skin conditions such as eczema and psoriasis



cleanses and hydrates

How to use

For daily use. Wash face twice daily with prescribed Sknlogic cleanser and gently dry with a towel. Spray Renew mist immediately on the face, neck and décolleté area. Allow to dry (do not wipe off).

Size

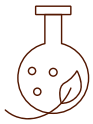
Retail & Professional: 200ml Dispenser

Repair mist (Hypochlorous Plus)

Repair mist helps to boost the skin's ability to repair itself after trauma to the skin. This includes aesthetic and dermatologic procedures, where it helps to speed up the recovery time of the skin. It ensures a much lower risk of post-inflammatory hyperpigmentation with a reduced risk of infection, scarring and dermatitis. Repair mist is more concentrated than the Renew mist and is used short-term on specific areas. When it is used on a wound it helps reduce redness, pain and swelling.



SKNtype: Most skin types



Paraben Free



Safe during pregnancy



Mineral oil free



Silicon Free



Hypo-allergenic



Sulphate Free



Vegan



Cruelty Free



No Colourants or Synthetic Fragrances



No MIT's



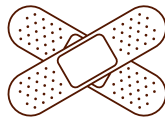
concentrated



stimulates cellular repair



enhanced recovery from invasive skin treatments



speeds up recovery of trauma to the skin



prevents scarring

How to use

Use on targeted areas. Thoroughly spray Repair Mist onto the entire wound and the wound site or affected area. The risk for infection is reduced and optimal healing conditions are generated. Afterwards, cover any open wounds with a dressing.

Size

Retail & Professional: 200ml Dispenser



Body care

Your skin is your body's first line of defense, and it is essential to care for your skin, not only on your face but on your entire body, therefore we have created the extension of the SKNLOGIC skin care range, SKNLOGIC body care.

Renew callus liquid

Renew callus liquid is a callus treatment liquid for the feet with papaya extract that quickly dissolves thick calluses leaving the foot smooth and polished.

SKNcondition: Callused heels

Does not contain Parabens, Sulphates, Synthetic Fragrance, and Synthetic Colourants, Lanolin derivatives, Mineral oil or MIT's.



Papaya extract

Vitamin A promotes cell renewal
Vitamin C increases collagen production
Alpha Hydroxy Acids promotes cell regeneration
Proteolytic enzymes break down and eliminate dead skin cells
Carbohydrates regulate trans-epidermal water loss.
Zinc combats acne

How to use

Use on dry feet. Wear protective gloves when using.



Before soaking the feet.

Dampen a piece of thin cotton wool with Renew callus liquid and place over the dry callused area. Do not wet feet before applying callus liquid.



Wrap the foot with plastic wrap to keep the cotton wool in place. Leave for 10-20 minutes depending on degree of the callus.

Remove plastic wrap and cotton wool and scrape away the softened calluses with the SKNLOGIC blunt callus plane. Wash and dry feet follow by massaging Renew foot balm onto the feet. Do not use more than once every 2 weeks.

Cuticle application: Apply cotton wool to cuticles and dampen with Renew callus liquid. Leave for 1 – 3 minutes and gently scrape away the softened dead cuticle build up with metal cuticle pusher. Rinse well.



SKNLOGIC Blunt Callus plane

For professional use only. For external use only. Wash off after use. Only use this product on callused skin, do not use on open or irritated skin. Not for use on skin's suffering from psoriasis or eczema on their feet or any other skin thinning disease.

Size

Professional: 400ml Bottle

Renew foot balm



An ultra-rich hydrating Foot balm that works to deeply help repair, soothe, revitalize and protect dry, tired feet. Delivers a compound of hydration with Sunflower oil, Wheat germ oil, Fig & Cucumber extract, orange oil and Shea Butter to help soothe sore joints, hydrate and protect extremely dry, cracked skin.

SKNcondition: Dry & Cracked feet

Does not contain Parabens, Sulphates, Synthetic Fragrance, and Synthetic Colourants, Lanolin derivatives, Mineral oil or MIT's.



Fig extract	Vitamin B promotes new cell growth and combats acne Vitamin C & Phytosterols increases collagen production Proteolytic enzymes remove dead skin cells and unblock pores Carbohydrates regulates trans-epidermal water loss
Sunflower oil	Rich in essential fatty acids. Vitamin E heals and helps to prevent scarring. Improves inflammatory conditions such as acne and eczema as well as general redness of the skin. It absorbs easily and is non-comedogenic.
Wheat germ oil	Hydrating Antioxidant Healing
Vitamin E	Antioxidant effect by suppressing harmful effects of free radicals and protects skin cells and membranes. Reduces the appearance of fine lines and wrinkles. Assists in maintaining the skin's oil balance
Stearic Acid	Replenishes the lipids in the top layers of the skin.
Shea Butter	Derived from the African Karite Tree. Considered to be the most respected and well-known of all the butters for its intense moisturizing, soothing and balancing skin properties. Promotes skin renewal Accelerates healing Assists with the prevention of wrinkles Helps protect the skin from harsh elements Rich in Vitamins A, E, and F along with minerals.
Cucumber Extract	Penetrates the skin without damaging the cell membrane Vitamin C increases collagen production and fights free radicals Removes dead skin cells Maintains skin's elasticity Hydrates
Citric Acid	Assists with skin renewal and increases collagen production. Assists in reducing age spots Antioxidant
Orange Oil	Anti-inflammatory Rejuvenating Improves skin elasticity

How to use

Apply after renew callus liquid or after any foot treatment to moisturize, repair, help promote skin regeneration and provide a breathable layer of protection. Recommend for at home regimen, morning and night, to soften skin. For extra hydration apply before bedtime and slip on a pair of socks.

Size

Retail: 75ml Tube

Professional: 200ml Tube

Body candle



SKNLOGIC body candles are ultra-moisturising, nourishing body candles, which can be used as massage oil or a body moisturizing oil. The formulation is a soy and paraffin wax free formulation that comes in a Fig & Vanilla fragrance with Fig extract and a Pineapple fragrance with Pineapple extract. Packaged in a box.

SKNtype & SKNconcern: Any skin type (Do an allergy patch test if allergic to bees or other bee related products before use).

Does not contain Parabens, Sulphates, Synthetic Fragrance, and Synthetic Colourants, Lanolin derivatives, Mineral oil or MIT's.

Fig extract (In Fig Candle only)	Vitamin B promotes new cell growth and combats acne Vitamin C & Phytosterols increases collagen production Proteolytic enzymes remove dead skin cells and unblock pores Carbohydrates regulates trans-epidermal water loss
Pineapple extract (In Pineapple candle only)	Vitamin A promotes cell renewal Vitamin C increases collagen production Proteolytic Enzymes accelerate exfoliation and unblocks pores Alpha Hydroxy Acids promotes cell regeneration Carbohydrates helps the skin retain moisture Amino acids fill in lines and wrinkles
Olive Oil	Vitamin A promotes cell renewal Vitamin E fights free radicals and maintains the skin's balance Polyphenols, phytosterols and avenasterols fights free radicals and repair cell membranes Anti-ageing Healing Softens and moisturises
Vitamin E	Reduces the appearance of fine lines and wrinkles. Assists in maintaining the skin's oil balance
Beeswax	Locks in moisture and protects the skin from damaging environmental factors. Softening Anti- inflammatory. Anti-bacterial Rejuvenating Relieves symptoms of eczema.
Shea Butter	Derived from the African Karite Tree. Considered to be the most respected and well-known of all the butters for its intense moisturizing, soothing and balancing skin properties. Promotes skin renewal Accelerates healing Assists with the prevention of wrinkles Helps protect the skin from harsh elements Rich in Vitamins A, E, and F along with minerals.

How to use

Light the candle and wait for a melted pool to form. Extinguish the flame and pour a small amount of melted oil into the palm of one hand. Massage into the skin as required. Use the warm oil on cuticles, elbows, heels or other dry areas of the body.

Size

Retail & Professional: 180g

Electrotherapy Products

SKNLOGIC electrotherapy gives you a selection of products to use in conjunction with galvanic and high frequency treatments. These products are only available for Professional use.

Facial firming gel

A conductive treatment gel for the face to be used with Galvanic treatments. Use with +VE current.

SKNtype & SKNconcern: Mature and Pre-mature ageing skin.

Does not contain Parabens, Sulphates, Synthetic Fragrance, and Synthetic Colourants, Lanolin derivatives, Mineral oil or MIT's.

Pomegranate extract	Vitamin C increases collagen production Vitamin B promotes new cell growth Vitamin E maintains the skin's oil balance Vitamin K Improves skin elasticity Alpha Hydroxy Acids promotes cell regeneration Amino acid has an anti-ageing effect Zinc acts as an anti-inflammatory and combats acne
Madecassoside (Gotu Kola)	Centella Asiatica Leaf Extract Medicinal plant Improves circulation as well as the synthesis of collagen. Antimicrobial Antioxidant Anti-inflammatory. Strengthens the skin and increases blood circulation.
Glycerin	Humectant. Hydrating Cooling Softening
St John's Wort	Reduces the appearance of fine lines and wrinkles. Hydrating Soothing
Bitter Orange	Lifts impurities from the skin. Calming and balancing.
Frankincense oil	Antioxidant Rejuvenating Astringent Anti-inflammatory Hydrating Promotes skin regeneration. Helps tone and firm the skin.

How to use

After enzymatic exfoliation, apply firming gel to the skin with a mask brush. Ensure that the exfoliate enzymatic has been thoroughly removed before starting Galvanic treatment. Set electrode on +ve. Use electrodes for a maximum of 10 minutes. Remove thoroughly with damp sponges. Follow with normal treatment procedure.

Size

Professional: 200ml

Facial hydrating gel

A conductive treatment gel for the face to be used with Galvanic treatments. Use with +VE current.

SKNtype & SKNconcern: Dry and Dehydrated skin.

Does not contain Parabens, Sulphates, Synthetic Fragrance, and Synthetic Colourants, Lanolin derivatives, Mineral oil or MIT's.

Fig extract	Vitamin A promotes cell renewal Vitamin B promotes new cell growth and combats acne Vitamin C increases collagen production Proteolytic enzymes remove dead skin cells and unblock pores Carbohydrates regulates trans-epidermal water loss Phytosterols encourages collagen production
Madecassoside (Gotu Kola)	Centella Asiatica Leaf Extract Improves circulation as well as the synthesis of collagen. Antimicrobial Antioxidant Anti-inflammatory. Strengthens the skin and increases blood circulation.
Glycerin	Humectant. Hydrating Cooling Softening
St John's Wort	Reduces the appearance of fine lines and wrinkles. Hydrating Soothing
Palmarosa Oil	Helps your skin retain its moisture in the tissues and maintains the moisture balance of the skin. Anti-inflammatory.
Geranium oil	Anti-inflammatory Helps minimize the appearance of fine lines and wrinkles.
Trehalose	Sugar molecule Humectant Antioxidant. Water binding properties, draws moisture into the skin.

How to use

After enzymatic exfoliation, apply hydrating gel to the skin with a mask brush. Ensure that the exfoliate enzymatic has been thoroughly removed before starting Galvanic treatment. Set electrode on +ve. Use electrodes for a maximum of 10 minutes. Remove thoroughly with damp sponges. Follow with normal treatment procedure.

Size

Professional: 200ml

Facial balancing gel

A conductive treatment gel for the face to be used with Galvanic treatments. Use with +VE current. Helps to regulate sebum secretion.

SKNtype & SKNconcern: Oily skin.

Does not contain Parabens, Sulphates, Synthetic Fragrance, and Synthetic Colourants, Lanolin derivatives, Mineral oil or MIT's.

Witch hazel extract	Restores the skin's pH balance Anti-inflammatory Antibacterial Healing Reduces excess oil Locks in moisture Protects against cell damage.
Banana Extract	Vitamin A promotes cell renewal Vitamin B promotes new cell growth Vitamin C increases collagen production Vitamin E maintains the skin's oil balance Vitamin K improves the elasticity Zinc combats acne Carbohydrates regulates trans-epidermal water loss
Glycerin	Humectant. Hydrating Cooling Softening
Ylang Ylang	Balances excess oil secretion. Helps the skin retains its moisture.
Geranium	Helps your skin retain its moisture in the tissues and maintains the moisture balance of the skin. Anti-inflammatory.

How to use

After enzymatic exfoliation, apply balancing gel to the skin with a mask brush. Ensure that the exfoliate enzymatic has been thoroughly removed before starting Galvanic treatment. Set electrode on +ve. Use electrodes for a maximum of 10 minutes. Remove thoroughly with damp sponges. Follow with normal treatment procedure.

Size

Professional: 200ml

Disincrustation gel

A conductive treatment gel for the face to be used with Galvanic treatments. Use with -VE current. Draws impurities from the skin. Removes buildup of dead skin cells.

SKNtype & SKNconcern: Congested skin.

Does not contain Parabens, Sulphates, Synthetic Fragrance, and Synthetic Colourants, Lanolin derivatives, Mineral oil or MIT's.

Grapefruit extract	Vitamin A promotes cell renewal Vitamin B promotes new cell growth and helps combat acne Vitamin C increases collagen production Vitamin E Maintains the skin's oil balance and repairs the skin Zinc acts as an anti-inflammatory and combats acne Carbohydrates regulate trans-epidermal water loss.
Lemon oil	Helps clear congestion from the skin. Antiseptic Reduce excess sebum. Help combat acne.
Glycerin	Humectant. Hydrating Cooling Softening
Cedarwood oil	Anti-inflammatory Anti-bacterial Inhibits the clogging of pores

How to use

Apply disincrustation gel to the congested areas only with a mask brush. Avoid exfoliation and disincrustation in the same area. Place wet cotton wool over electrode. The skin must stay moist to avoid galvanic burn. Set electrode on -ve. Use electrodes for a maximum of 7 minutes. Remove thoroughly with damp sponges. Follow with normal treatment procedure.

Size

Professional: 200ml

Body firming gel

A conductive treatment gel for the body to be used with Galvanic treatments. Use with +VE current. Can be used with any cellulite reduction regime.

Firms and Tones the skin while reducing the appearance of cellulite.

SKNtype & SKNconcern: Cellulite

Does not contain Parabens, Sulphates, Synthetic Fragrance, and Synthetic Colourants, Lanolin derivatives, Mineral oil or MIT's.

Witch hazel extract	Restores the skin's pH balance Anti-inflammatory Antibacterial Healing Reduces excess oil Locks in moisture Protects against cell damage.
Grapefruit oil	Helps eliminate toxins Anti-inflammatory Helps break down cellulite Maintains the skins moisture balance.
Glycerin	Humectant. Hydrating Cooling Softening
Geranium oil	Improves circulation and stimulates the lymphatic system. Help diminish water retention and eliminate toxins.

How to use

Apply body firming gel to the pre-cleansed area to be treated. Massage until product is absorbed. Use electrodes for a maximum of 10 minutes. Follow with normal treatment procedure.

Size

Professional: 200ml

Oxygenating cream

A light creamy emulsion formulated for use with a high frequency machine to purify the skin.

SKNtype & SKNconcern: Most skin types

Does not contain Parabens, Sulphates, Synthetic Fragrance, and Synthetic Colourants, Lanolin derivatives, Mineral oil or MIT's.

Stearic Acid	Replenishes the lipids in the top layers of the skin.
Citric Acid	Encourages exfoliation Increases collagen production Antioxidant
Glycerin	Humectant. Hydrating Cooling Softening

How to use

Apply cream to skin and cover with gauze. Move high frequency electrode over the gauze for the duration of the treatment and remove excess cream with warm water.




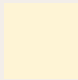
Size

Professional: 200ml

Prescribing SKNLOGIC Products


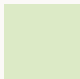


PHASE 1: The Fundamentals to treat Skin type

Basic Skincare Range for 4 weeks for skin that has never been exposed to active cosmeceutical ingredients to treat and balance the specific skin type. If they were using an active range this can be reduced to 2 weeks.

SKNType	SKNAction	SKNRecommendation
Balanced/Combination skin 	Cleanse	Remove
		Cleanse wash
	Tone	Tone
	Optimise	Charcoal Detox Masque or Multi Regenerating Masque
	Hydrate	Moist
	Protect	Protect
Oily Skin 	Cleanse	Remove
		Cleanse gel
	Tone	Tone
	Optimise	Charcoal Detox Masque
	Hydrate	Moist gel
	Protect	Protect
Dry Skin 	Cleanse	Remove
		Gentle cleanse cream
	Tone	Tone
	Optimise	Multi Regenerating Masque
	Hydrate	Moist supreme and Omega Face Oil
	Protect	Protect
Sensitive Skin 	Cleanse	Gentle cleanse cream
	Protect	Protect
	Hydrate	Omega Face Oil

PHASE 2: Treat Skin condition

After this initial period (2 – 4 weeks) we can start introducing the treatment products to start treating the primary skin condition.

SKNCondition	SKNAction	SKNRecommendation
Dehydrated Skin 	Restore	Hydrating serum
		Boost
		Exfoliate or exfoliate enzymatic
	Skin Booster	Eye revitalise and/or Eye cream
		C15 Booster and/or B10 Booster <i>(if both boosters prescribed use C15 in am and B10 in pm)</i>
Mature or Pre-mature ageing Skin 	Restore	Boost
		Night Plus
		Exfoliate enzymatic
		Eye cream
	Skin Booster	Retinol 0.5 Booster (pm) and/or C15 Booster <i>(if both boosters prescribed use C15 in am and Retinol in pm)</i>
Problematic Skin 	Restore	Clarify
		Eye revitalise
		Exfoliate enzymatic
	Skin Booster	B10 Booster and/or Retinol 0.5 (pm) <i>(if both boosters prescribed use B10 in am and Retinol in pm)</i>
Hyper pigmented Skin 	Restore	Diminish day
		Diminish night
		Exfoliate enzymatic
	Skin Booster	Eye cream and/or Eye revitalize
		C15 Booster (am) and/or Retinol 0.5 (pm) <i>(if both boosters prescribed use C15 in am and Retinol in pm)</i>

PHASE 3: Optimisation - Intensive treatment

After 12 weeks of using the Sknlogic basic range the Multi Active lotion can be added twice a week as a leave-on overnight peel.

Multi Active Lotion 	Restore	Dehydration
		Hyperpigmentation
		Age Defence
		Problematic skin

Rules for Prescribing SKNLOGIC Products:

- Identify client's primary concern – Condition of skin as well as skin type through a thorough consultation.
- Always prescribe Protect SPF 40 sunscreen and apply after any treatment.
- Clients should avoid sun exposure as far as possible.
- When treating a skin condition follow the Sknlogic approach – adopt a slow gradual process to not over-stimulate the skin. Treat the skin type first and then move onto the skin condition, especially when treating hyper pigmented skin.
- If a client has never used a cosmeceutical skin care range or have not used active products within the last 3 months, care should be taken when prescribing products. First prescribe the correct Cleanser, Toner, Moisturiser and Sunscreen.
- Most skin types will be able to use the Sknlogic range of products, but for very sensitive skin and skin with rosacea or eczema always do a patch test before selling the products to the client. Samples are also available for testing purposes.
- If a client has an allergy to a particular food, it does not necessarily mean that they will respond negatively to that particular ingredient when it is applied topically. A typical allergy normally manifests within 2 to 48 hours, it could also take a bit longer to manifest. As a safety precaution it is advised to do patch testing first so that they are not excluded from these treatments.
- For optimal results the client must go for regular professional SKNLOGIC treatments along with using the product range.
- The multi Peel treatments should only be introduced after using the Sknlogic range of products for 12 weeks. If the client was using a cosmeceutical product before starting with the Sknlogic range of products this can be reduced to 8 weeks with caution. The Multi Active lotion and Multi Peel cannot be done in conjunction, they need to stop using the Multi Active lotion until the course of Multi Peel treatments has been completed. Do not use Multi Active Lotion and Retinol booster on the same evenings.
- See Retinol booster information sheet for how to introduce the Retinol booster to the skin.

Understanding reactions in the skin

We recommend that the Sknlogic basic range of products be used for 4 weeks before any active treatment products is included in the protocol.

The basic range would include a cleanser, tone, moisturiser and protect spf. A masque can be used once a week with caution.

After 4 weeks they can start incorporating Phase 2 products.

When starting a new Skincare range the skin can experience different reactions to the product. Knowing the difference between these reactions will help to ensure that the correct counter measures are taken.

Skin purging

When active ingredients are introduced for the first time, what is called 'skin purging' can occur. This is normally in the form of pimples or an acne breakout in severe cases, it means the product is working and sometimes the skin gets worse before it gets better. The reason this happens is because a pimple doesn't begin when you actually see it. It starts as a clogged pore under the surface of your skin that you can't see, which can eventually become a full-blown pimple before it goes away. This process can take up to 8 weeks. If a skincare product increases the rate of skin cell turnover, it speeds up this entire cycle, and so you'll see a lot of pimples appear.

The client should be instructed to be patient and allow the active ingredient time to work.

Irritant contact dermatitis

Another reaction can be irritant contact dermatitis, this usually occurs very soon after introducing a new product as a result of using too much product and/or too frequently. Therefore we start with low percentage actives and introduce slowly to give the skin time to adapt. Hence the first 4 weeks of the basic range. To start with the Multi Active lotion or Multi Peel treatments (they cannot do both at the same time) they must be on the Sknlogic range for at least 12 weeks.

More often associated with burning or stinging as well as, or instead of, itching. The skin may be fissured, as well as rough and dry. Redness, oozing lesions, and inflammation may develop with chronic irritant contact dermatitis.

If this procedure was followed and the client still has the irritant contact dermatitis reaction, then we will let them use less product and less frequently.

Contact dermatitis can also happen after the client has been using the products for a time but keep adding more and more products. We cannot unfortunately treat all skin concerns at once as we will over stimulate the skin. So once again it is advisable that they use less product and use those products less frequently.

Allergic reaction

Less frequently encountered than irritant contact dermatitis.

Reaction usually occurs 48 – 72 hours after introducing a new product, however it can take days or even months to manifest as it is an immunological response of the skin. It will present itself as burning, itching, redness and scaliness.

They must stop using the product and allow the skin time to settle. Try again and if the same reaction occurs, they might be allergic to something in the product. In which case they need to stop using the product.

Boosters vs Serums & Treatments

Our boosters and serums hone in on specific skin concerns (like large pores, uneven skin tone, and premature ageing). At first glance, the differences between these types of products might seem subtle, but closer examination reveals the nuances are incredibly important for certain skin types and concerns.

Keep in mind that other skin care companies may interpret or formulate their boosters and serums differently than we do. Product categories within the cosmetic industry are rarely universal. Because of this, we don't recommend using our descriptions to determine what products from other brands will do for your skin.

Boosters

Our skin boosters contain potent concentrations of a pivotal ingredient for skin or a blend of a specific ingredient group where the similar structures of each ingredient combine to enhance the results. They include our C15 Booster with 15% Vitamin C, Vitamin E & Ferulic Acid and our B10 Booster with Hyaluronic Acid and 10% Niacinamide and our new Retinol 0.5 and Retinol 1 boosters with Retinol 0.5% for retail and 1% for professional use and Soyaglycone.

High concentrations can bring about incredible results for skin, but even these brilliant ingredients still need support. That's why you'll find other beneficial ingredients (such as antioxidants, skin-replenishing ingredients, and skin-restoring ingredients) in our booster formulas.

Each booster is designed to be powerfully effective, yet exceptionally lightweight, and to layer easily with the other products you use. The boosters can be applied alone as a separate step or mixed with your non-SPF moisturizers or serums.

Maintaining a long-term relationship with these ingredients is how you reap the real benefits. Every day you must help your skin do what it can't do any longer (or do as well) on its own—that's where boosters excel.

Due to the high concentrations of skin boosters they are also used in professional treatments to enhance the effects of treatments such as microneedling. You can use these boosters to customize your professional skin treatments to your client's specific skin concern. For example for a client with breakouts you can apply the B10 Booster before applying the Charcoal Detox Masque. See our brand new Sknlogic Skin Treatment Menu for ideas on how you can incorporate these skin boosters into your treatment menu.

Serums

Serums are skin care products that are designed to deliver high concentrations of specific active ingredients to the skin. These products are designed to travel deeper into the skin to deliver the bio-active ingredients deep into the skin. Most often, serums are clear, gel-based or liquid, and they tend to be less thick than a moisturizer.

Serums work in harmony with your moisturiser and other skin care products by supplying an advanced, similarly-weighted blend of bio-active antioxidants, skin-replenishing ingredients, and skin-restorative ingredients. What makes our serums unique are their balanced concentrations of the critical, supportive ingredients skin needs to be healthy, to further repair itself, and to

protect from future damage. It is the concentration of several bio-active ingredients that separate a serum from a moisturizer, as not everything your skin needs can be included in one product.

A serum like our Hydrating Serum is able to hydrate more effectively than even the heaviest creams. The molecules are able to truly penetrate the skin and hydrate on the deepest level, while the heavier creams more so sit on those top layers. This does not mean that one replaces the other, while a serum like our Hydrating serum works to draw moisture into the skin, a moisturiser helps to lock in that moisture so that it does not evaporate.

Other Treatment Products

Our treatments are specially formulated to address a specific skin concerns. We offer treatments for multiple skin concerns, such as for those trying to tackle stubborn breakouts and blackheads, or fine lines, wrinkles and other signs of ageing or uneven skin tone and hyperpigmentation. Our treatment products include thicker cream like products such as Clarify for problematic skin, Boost for dehydrated and to defend against ageing, Night plus to reduce the signs of visible ageing and Diminish day and Diminish Night for hyperpigmented skin. We also have thinner treatments that would fall in between a serum and a treatment such as Multi Active Lotion, this is applied only two – three times a week and is a concentrated treatment product to combat most skin concerns and brings visible results by renewing layers of the skin (similar to the way that a chemical peel works).

How to Add a Booster, Serum or Treatment to Your Skin care Routine

Our boosters and serums are made to be versatile! They can be layered in any fashion once or twice per day, or used on alternate days, or you can apply one or more in the morning and different ones at night. There really is no single right way; everything is adaptable as you develop the method and frequency of application that you discover works best.

The routine below is a step-by-step example of how you could add one or more of these products to your morning and evening skin care routines. Just be sure that sunscreen is your last skin care step each morning.

Daily Morning and Night Routine:

Step 1: Cleanser

Step 2: Toner

Step 3: Booster

Step 4: Layer treatments and serums as required in order from thinnest to thickest texture.

Step 5: Eye cream or Eye gel

Step 6: Face Oil and/or Moisturiser.

Step 7: Protect SPF 40 (during the day only).

Although boosters, serums and treatments can be a good addition to the rest of your skincare routine, in most cases they are not substitutes for a day or night cream. But if, for example, you have very oily skin, you could choose to use only a booster and treatment product.



SKNLOGIC has started the Sowing good seeds initiative in which we donate the proceeds from the sale of our Seed bracelet to Hands on Africa and the work they are doing amongst the children of Africa.

Hands on Africa have orphanages in South Africa, Kenya, Malawi, Zambia and Sierra Leone, with more than 200 children that they feed, clothe and provide shelter and education for. For children who have no family, we provide a place they can call home. With enough funds this number can be greatly increased.

Help us help the children of Africa

Although our love for the children of Africa is free caring for the Children of Africa is not. It costs around R350 per month to feed, clothe, educate and provide a home to one of these children.

- We have started the Sowing good seeds initiative in which we donate the proceeds from the sale of our Seed bracelet to Hands on Africa and the work they are doing amongst the children of Africa.
- Your salon and your staff can support this initiative not only by selling these Seed bracelets, but also by adopting one of these children and thus create your own support system for the children of Africa.



Professional Tools : Links

Google Drive Folder

Here you can find images and other tools to help optimise selling in your salon. You can download the images and use in your social marketing.

https://drive.google.com/drive/folders/1uMNYtGNKUryaFUaASwPYzbpxsDxcqY8P?usp=drive_link

Facebook Community Group

Join our Facebook Community Group and stay up to date with relevant information.

<https://www.facebook.com/groups/224194449001027/>

Skinlogic Stockist Locator

New Link coming soon.

Essential Skin Treatment Procedures

Our customisations is what makes Sknlogic professional treatments so effective, and our powerful customisation formulas take every skin treatment to a whole new level.

Our Essential Skin treatment menu offers a solution for each specific skin type tailored to individual concerns. The Essential skin treatments are especially for clients new to Sknlogic starting on the basic range before they start with the advance skin treatments.

These customised treatments offers a deep cleanse, exfoliation and treatment masque with a skin booster combined with an invigorating massage and nourishing moisturiser.

Rejuvenating & Lifting Essential Skin Treatment - 45min

With dermal stem cell masque and 1% Retinol skin Booster.

Treats fine lines and wrinkles, increases collagen and elastin production.

Step 1: Deep Cleanse	Every treatment starts with double cleansing the skin with Remove pre-cleanser and gauze. Cleanse with Gentle Cleanse Cream or prescribed cleanser in circular motions and remove cleanser with lukewarm water.
Step 2: Tone	Apply Tone with Gauze.
Step 3: Exfoliate	Exfoliate face and décolleté with chosen exfoliator, preferred exfoliator for this treatment is Exfoliate enzymatic. Steam may be used at this time.
Step 4: Massage	Use Sknlogic Massage Cream for massage treatment
Step 5: Masque & Boost	Apply Retinol 1% Booster to skin. Apply Multi Regenerating Masque for 10-15 minutes. Retinol Booster 1% can also be mixed with the Multi Regenerating Masque prior to application for one step application.
Step 6: Cleanse	Cleanse with Gentle Cleanse Cream or prescribed cleanser.
Step 7: Tone	Apply Tone with Gauze
Step 8: Moisturise & Protect	Apply Moist Supreme or prescribed moisturizer and/or Omega Face Oil Apply Protect Spf 40

Brightening Essential Skin Treatment - 45min

With activated charcoal masque and 15% Vitamin C skin booster.

Treats dark spots and uneven skin texture, brightens skin for natural glowing skin.

Step 1: Deep Cleanse	Every treatment starts with double cleansing the skin with Remove pre-cleanser and gauze. Cleanse with Cleanse Wash or prescribed cleanser in circular motions and remove cleanser with lukewarm water.
Step 2: Tone	Apply Tone with Gauze.
Step 3: Exfoliate	Exfoliate face and décolleté with chosen exfoliator, preferred exfoliator for this treatment is Exfoliate enzymatic. Steam may be used at this time.
Step 4: Massage	Use Sknlogic Massage Cream for massage treatment
Step 5: Masque & Boost	Apply C15 Booster to skin. Apply Charcoal Detox Masque for 10-15 minutes. C15 Booster can also be mixed with the Charcoal Detox Masque prior to application for one step application.
Step 6: Cleanse	Cleanse with Cleanse Wash or prescribed cleanser.

Step 7: Tone	Apply Tone with Gauze
Step 8: Moisturise & Protect	Apply Moist or prescribed moisturizer and/or Omega Face Oil Apply Protect Spf 40

Refining Essential Skin Treatment - 45min

with activated charcoal masque and 10% Niacinamide skin booster.

Reduces pore size and refines skin texture.

Step 1: Deep Cleanse	Every treatment starts with double cleansing the skin with Remove pre-cleanser and gauze. Cleanse with Cleanse Gel or prescribed cleanser in circular motions and remove cleanser with lukewarm water.
Step 2: Tone	Apply Tone with Gauze.
Step 3: Exfoliate	Exfoliate face and décolleté with chosen exfoliator, preferred exfoliator for this treatment is Exfoliate enzymatic. Steam may be used at this time.
Step 4: Massage	Use Sknlogic Massage Cream for massage treatment
Step 5: Masque & Boost	Apply B10 Booster to skin. Apply Charcoal Detox Masque for 10-15 minutes. B10 Booster can also be mixed with the Charcoal Detox Masque prior to application for one step application.
Step 6: Cleanse	Cleanse with Cleanse Gel or prescribed cleanser.
Step 7: Tone	Apply Tone with Gauze
Step 8: Moisturise & Protect	Apply Moist Gel or prescribed moisturiser Apply Protect Spf 40

Optional Add-on for all Sknlogic Essential Skin Treatments.

Sknlogic Soothing and Hydrating Peel Off Masque can be substituted with any of the cream or clay based masques prescribed above.

Sknlogic Specialised Skin Treatments.

For clients wanting to take the next step in skin health and have been on the Sknlogic range for longer than 8 weeks you can offer one of the specialised skin treatments.

Multi Chemical Peel Treatment

The Sknlogic Multi Peel Chemical peel system is a multi-purpose, time dependent superficial peeling agent with 50% Alpha and Beta Hydroxy Acids. It provides a safe, controlled and predictable procedure that gradually removes surface skin cells resulting in improvement of skin texture. The Sknlogic Multi Peel utilises both Alpha and Beta – hydroxy acids with other active ingredients to treat the skin. The treatment is finished with Omega Face oil with omegas 3, 5, 6, 7 & 9 to restore the skin's barrier function. For best results a cycle of one treatment per week for 6 - 10 weeks is recommended.

Collagen Induction Therapy (Micro Needling)

This micro needling service improves fine lines, wrinkles, acne scars, hyper pigmentation stretch marks and other conditions by stimulating your skin's natural ability to repair itself. SKNpen is a medical-grade tool that works by creating a series of microscopic channels into the skin to stimulate collagen and elastin production. Your skin will look and feel healthier with little to no downtime. Omegas 3, 5, 6, 7 & 9 is infused deep into the skin to restore the skin's barrier function. Finished with a skin booster with 15% Vitamin C or 10% Niacinamide or 1% Retinol and skin replenishing peel off masque. (Must be on the Sknlogic range for longer than 8 weeks). Treatments can be done once a month.

SKNLOGIC Frequently asked questions:

1. What sets SKNLOGIC skin care apart from other skin care ranges?

Our products are affordable but effective.

We care about skin, and therefore believe that every ingredient in the product should work towards a healthier skin.

Wherever possible we try and use nature-identical ingredients.

We are a result orientated brand.

We utilise the concept of enzymatic exfoliation to regenerate the skin.

We use maximum concentration of key active ingredients and use the highest grade of quality ingredients from around the world.

We have a synergistic approach to science and nature and work to fuse these two different concepts to create effective product formulations.

No or very limited transitional (crisis) period when starting on the range.

We are continuously exploring new technology in the skin care field and working on our formulations to ensure that they remain on top of the latest research. But because we do not want a product range that has 100's of products, some of which have become obsolete with the introduction of new products with new formulations, we choose to rather, in most cases, update the current product by increasing concentrations of ingredients or adding new ingredients.

2. Is SKNLOGIC a cosmeceutical or cosmetic skin care range?

Cosmeceutical products have a more physiological effect than cosmetic products as they contain antioxidants, exfoliators, and other intercellular ingredients that are necessary to support the natural structure of the skin. Cosmeceutical products work in the same way as prescription medications, diagnosis and consultation is required to be able to obtain these products.

Because Sknlogic contains all of these ingredients mentioned above (Fruit extracts all have antioxidants, enzymes and we use other active ingredients as well to obtain these functions) it is more than just a Cosmetic. But it is a skin-friendly product, in that it does not cause drastic reactions, as with many other cosmeceutical products. We believe that the skin does have the ability to heal itself with the necessary help.

A Cosmetic product will not cause the skin to change or restore but are restricted to beautifying or concealing. A cosmeceutical product facilitates an active process of reversing the signs of damage in the skin.

Sknlogic is not a cosmetic as it contains enzymes, antioxidants and active ingredients that alters and restores the skin, but it is a skin-friendly product without harsh chemicals that helps the skin repair itself without inducing shock therapy. Sknlogic is therefore classified as a cosmeceutical and not a cosmetic.

3. Can anyone use SKNLOGIC Products?

Most skin types will be able to use the Sknlogic range of products. We limit the amount of chemicals in the products and focus on including safer, nature-identical ingredients for functions such as shelf-life and viscosity. For this reason, most skin types, even sensitive skin types will be able to use the product range. However, it is important to know that Sknlogic is an active product range, with fruit acids and other active ingredients and should be prescribed with caution.

If someone has never used a cosmeceutical product range before they should start with a basic range of products and treatment products should be introduced after a 6 – 8 weeks of using the product range.

4. Why is SKNLOGIC so much cheaper than most other cosmeceutical product ranges?

Price alone has nothing to do with the strength and effectiveness of skin care products. We believe that good skin care should be accessible to everyone, and that what is in the jar is more important than what that jar looks like. For that reason, we choose packaging that has the lowest cost possible to ensure that most of the cost of the product is made up out of the active ingredients in the product. Sknlogic is also manufactured locally, which means saving on transport cost and there are no customs duties added onto the final price. Our passion for the skin and the industry means that we are not in it only to make a profit, but to be involved in the process, learn new technologies and be a part of the community. We believe in the future of the industry and as we all feel the economic burden over the last few years, we knew that it was necessary to give the industry a product that is affordable to their clients but is still result orientated. Being driven by passion rather than profit means that accessibility of the product is of the utmost importance to us.

5. Why does SKNLOGIC not use parabens?

Parabens are preservatives used in many skin care products. Parabens have received bad publicity due to the fact that parabens have been proven to penetrate the skin and can be traced in the blood minutes after application. Parabens are cheaper than most alternative preservatives and easier to work with as they are more stable. However, there are effective alternatives, and although priced at a higher cost, do not have the potential of being estrogenic or carcinogenic. Although many companies have said that the studies that caused the controversy around parabens was inconclusive, we feel that if there are effective alternatives, why not rather use these. After all parabens do not have any benefit to the skin only to the manufacturer.

6. What preservatives does SKNLOGIC use?

For most of our products we use Sodium Benzoate and Potassium Sorbate. Sodium Benzoate is a salt, and occurs naturally in some plants, such as cranberries. It is used as a preservative in food and cosmetic products and has a very low level of toxicity. Various tests have shown that it is not carcinogenic.

Potassium Sorbate is also a salt and naturally found in some berries. It has been rated as one of the safest preservatives according to the recommendation of the U.S. Food and Drug Administration. Other preservatives we use to a lesser extent are Sodium Anisate which is obtained from anise and fennel and Sodium Levulinate (Levulinic Acid). We also use Phenoxyethanol which is naturally found in green tea and Ethylhexylglycerin.

We continuously watch for any new research or valid studies about these ingredients for any potential toxicity that may be found to ensure that we utilise the safest ingredients to preserve the shelf-life of our products. We also include these ingredients at the lowest concentrations possible so that we limit the amount that goes onto the skin to the bare minimal.

7. SKNLOGIC and expiry dates:

The date on the sticker on the Sknlogic products is between 12 and 24 months after the manufactured date, depending on which product, this needs to be on the packaging according to

the packaging requirements in South Africa. However, the picture with the open jar and 12m or 24m on the back, means that you can use the product for 12 months or 24 months after opening it. Because there is no way of knowing on which date the tube or bottle is opened, there is no way to put an exact date on the tube or bottle. So what we do in effect so that you know how long you can use the product for, is put a sticker on 12 - 24 months after the date of manufacture, and then they can still use it for 12 or 24 months after that date, as per the jar on the back.

8. Why does SKNLOGIC not use mineral oil?

Mineral oil has been labelled as a cutting oil in metalworking and as such is a petroleum by-product that clogs the pores of the skin, as it acts like a plastic. It has been claimed that it interferes with the skin's detox system by stopping the skin from eliminating toxins. This could lead to acne and other disorders. It is however used in many skin care products because it is much cheaper than its counterpart carrier oils. Although many skin care companies deny these claims, we feel, why take the chance? We do not want to potentially compromise the skin and carrier oils have naturally healing properties, which is why we rather opt to spend a little more and ensure we give the best possible result. It is however important to remember that plant oils need to be checked that they have been properly refined and do not bring in any toxins from pesticides and fertilizers.

9. Where does SKNLOGIC's fragrance come from?

We believe your skin care should be pampering as well as effective. We associate smell with emotions and memories, and it forms a very important part of our daily lives. For this reason, we wanted to incorporate a fragrance into the products that was able to uplift while the ingredients go to work on the skin. Because we based our products on fruit extracts, we decided to add the uplifting fragrances of fruits into the products.

This presented us with a problem, because even though we initially added Perfume to the products for this fragrance, we wanted a safer and less allergenic substitute for the fragrance. We finally came across Flavours, which is a nature-identical fragrance substitute and does not contain any of the 26 known allergens that can be found in Perfumes, and thus can be used on the most sensitive skins. We then quickly went to work on replacing the Perfume with Flavours in all our formulations and have now done so in most of our products. Therefore you might have noticed a change in the fragrance of the product over the last 2 years, as it is impossible to imitate the perfume exactly.

Although these flavours are non-sensitizing, we have decided to remove the flavours from the skin care range. This decision was made based on feedback from clients and considering that fragrance is such a personal choice.

10. Formulation changes

We are continuously exploring new technology in the skin care field and working on our formulations to ensure that they remain on top of the latest research. But because we do not want a product range that has 100's of products, some of which have become obsolete with the introduction of new products with new formulations, we choose to rather, in most cases, update the current product by increasing concentrations of ingredients or adding new ingredients, we also do so and try and limit any cost involved to the end-user by absorbing these, sometimes very expensive, changes to the formulation. There are new exciting discoveries being made in the beauty industry on a regular basis, and although we cannot include all these new technologies, we try and include those that fits in with our skin health philosophy. These changes

may sometime cause changes in the look and feel of the product, but we can ensure you any change made to the formulation is to give you a more effective, safer product.

11. Why does SKNLOGIC use Titanium Dioxide in their sunscreen?

There has been a lot of talk around Titanium Dioxide over the years especially that it is a carcinogen. The research around Titanium Dioxide and it being carcinogenic was based on concentrations of pigment-grade (powdered and ultrafine titanium dioxide dust) and the cancer in rats was only after inhaling titanium dioxide dust, which you're not going to be exposed to when you're just wearing sunscreen. The CDC listed titanium dioxide as a cancer-causing agent, only when it is inhaled, not when ingested or applied topically. This is similar to coal dust, flour dust etc where inhalation interferes with the uptake of oxygen into the blood stream. Titanium Dioxide however is a very effective UVB protector and as such is used in many sunscreens.

When deciding which controversial ingredients to use and which to leave, one must decide what the alternative ingredients are and how safe they are for the skin and the environment. Physical sunscreens (or sunblocks rather) (Titanium Dioxide and Zinc oxide) forms an opaque layer that sits on your skins surface, reflecting or scattering UVA/UVB before it penetrates your skin. Chemical sunscreens absorb into your skin, where it absorbs UVA/UVB.

Chemical sunscreens can be irritating, cause break outs in acne-prone skin and is not ideal for sensitive skin, this is why physical sunscreens are used along with chemical sunscreens, so that only the minimal chemical sunscreens are needed for the spf factor. The chemicals soak into your bloodstream – These chemicals have been detected in blood, urine, and breast milk 2 days after a single application, this is why you want as little as possible in it in your products.

Because Titanium Dioxide can have some other negative effects (white film on the face, drying) when the dosage in the product is too high, we also use chemical ingredients, but at the lowest dosage that we possibly can.

We choose the safest possible chemical sunscreen for our formulations, and dilute it with Titanium Dioxide and Zinc Oxide, so that we can limit the amount of chemicals used.

12. What chemical sunscreen does SKNLOGIC use along with physical chemicals?

As mentioned, using only a physical sunblock such as Titanium dioxide and Zinc oxide is not ideal, as these ingredients can make the sunscreen heavy and difficult to apply, leaving a white layer on the skin and dry out the skin. Because of this we need to include a chemical sunscreen as well. We have searched long and hard for the safest and most efficient chemical sunscreen and now use a combination of Butyl Methoxydibenzoylmethane (Avobenzone) and Octocrylene.

Butyl Methoxydibenzoylmethane have been cleared by the FDA and the European Commission's Scientific committee for Cosmetic Products concluded that this UV filter has no estrogenic effect that could potentially affect human health and is not banned in any country.

Octocrylene have been cleared by the FDA to be used in skin care products. They have acceptable safety levels according to the FDA as well as the CIR, Cosmetic Ingredient Review, and have not been banned in any country.

But it is necessary to mention that these are still chemical ingredients, and to ensure that we only have to use the minimum concentration we include physical sun blocks as well.

13. Why does SKNLOGIC not use Octyl Methoxycinnamate as a chemical sunscreen?

This is probably the most talked about chemical sunscreen that is currently FDA approved, and not in a good way. It is said to degrade overtime when exposed to sunlight and therefore not the most photo stable. Also said to be absorbed by the skin so there are some safety concerns.

Whether these claims are founded or not is not really of importance to us as there are alternatives that are less controversial that works just as effective as octyl methoxycinnamate and for this reason we opted to rather use these. We continuously watch for any new research or valid studies about these ingredients for any potential toxicity that may be found to ensure that we utilise the safest ingredients.

14. Why is there oil in the Moisturiser for oily skin?

It is a myth that oily skin should not use products that includes oils. If we strip the oil away, the skin will produce more oil to compensate, using products with small concentrations of oils can actually help slow down the production of oil in your skin. Some oils combats acne and other problems associated with oily skin and therefore can be used in small concentrations. Dehydration and Dry skin are also two different things, Dry skin is a skin type that is caused by under-active oil secretion and dehydration is a skin condition caused mostly by external influences. Oily skin therefore can also become dehydrated and when this happens your skin starts generating more oil, adding to the problem instead of solving it. Our Moist Gel has very small concentrations of Olive oil and Wheat germ oil, which are both very hydrating and healing. Because it was designed specifically for oily skin, Moist gel is a lightweight gel instead of a heavy cream, but still provides adequate hydration.

15. Is SKNLOGIC Organic?

To be able to say that a product is organic, you need to comply with certain criteria. Depending on what certification is used, there will be different guidelines, for example to be certified organic by the USDA, 95% of ingredients must be certified organic and there are strict restrictions on the substances that can be used in the remaining 5%. There is currently no body in South Africa that does organic certification and all products needs to be certified through Europe or USA. This is a costly process and because of this very few companies claiming that they are organic, are in fact not organically certified. SKNLOGIC is not certified organic, however we always opt for ingredients that are safe for the environment as well as the skin and wherever possible use nature-identical ingredients.

16. Are products made with organic ingredients safer for consumers than those made with ingredients from other sources?

We have retrieved the answer to this from www.usdaorganicskincare.com:

“No. An ingredient’s source does not determine its safety. For example, many plants, whether they are organically grown or not, contain substances that may be toxic or allergenic. For more on this subject, see FDA Poisonous Plant Database. Under the FD&C Act, all cosmetic products and ingredients are subject to the same safety requirement: They must be safe for consumers under labelled or customary conditions of use (FD&C Act, section 601(a). Companies and individuals who market cosmetics have a legal responsibility to ensure that their products and ingredients are safe for the intended use.”

17. If a client is allergic to a food source will they automatically have an allergic reaction when this ingredient is applied topically onto the skin?

No, it does not mean that if a client has an allergy to a particular food that they will have a response to that particular ingredient when applied topically. Should there be a response, a typical allergy usually manifests with 2 to 48 hours, it could also take a bit longer to manifest. As a safety precaution it is advised to do patch testing first so that they are not excluded from these

treatments. Some of our products contains nut products such as Sweet Almond oil and gluten products such as Wheat germ oil, if the product contains these products, the client needs to do a patch test before purchasing the product. She can either do this with the salon's professional stock or get samples from the salon in the products in which they are available. We do not take back used stock as a result of an allergic reaction. If the stock has not been used the salon can take it back and send it back for a credit, but if it has been used, we cannot take it back.

18. Percentages of individual ingredients in Sknlogic Products

The product formulations are intellectual property of Sknlogic and therefore the percentages of individual ingredients cannot be revealed. We use the highest percentages according to supplier recommendations and we will always conform to all regulations regarding concentrations. Our focus is to use the best formulation combination to get the best long-term results.

19. What is a superficial peel?

There are three types of chemical peels, superficial, medium and deep. These have varying percentages of active ingredients and different PH levels. The percentage of a peel just indicates how much of the peeling agent is contained in the peel. The pH indicates how deep the peel will penetrate into your skin and how much irritation you will get. The lower the pH the deeper the peel. Beauty therapists can only do peels with a pH less than 2.5. Superficial peels only remove the top layer of the skin. Medium depth peels are usually derived from TCA and cause a second-degree burn of the skin and has a longer recovery and more side effects. Deep peels penetrate several layers of skin and cause a second-degree burn of the skin and are only performed by medical doctors.

20. How does the callus liquid peel work?

The SKNLOGIC callus liquid is a peeling agent for callused feet. Our callus liquid is an alkaline peeling agent with a pH of 13 that work to soften and break down dead skin. Enzymes further help to remove dead skin cells. It is important to neutralise the skin after treatment with the Renew Foot balm as the liquid is time dependant and will continue to break down skin until the pH of the skin is neutralised.

21. What mechanical exfoliation is used in Exfoliate?

Exfoliate uses both chemical and mechanical exfoliators to exfoliate the skin. The chemical exfoliation is from the proteolytic enzymes in the Papaya extract that break down and eliminate dead skin cells. The mechanical exfoliation is from the powdered apricot kernels and Jojoba beads. Recently Polyethelene beads which were previously used was added to the banned list due to its negative environmental impact. Jojoba esters provide a gentle yet effective exfoliation and is 100% natural, biodegradable and contain no microplastics. Therefore, it is completely safe for the environment.

22. Does Sknlogic use Alcohol?

When we express concern about the presence of alcohol in skincare or makeup products, we're referring to a drying type of alcohol that you'll most often see listed on an ingredient label as SD alcohol, denatured alcohol, or, less often, isopropyl alcohol. These types of volatile alcohols give products a quick-drying finish, immediately degrease skin, and feel weightless on skin, so it's easy to see their appeal, especially for those with oily skin.

But those short-term benefits end up with negative long term consequences.

When you see these names of alcohol listed among the first six ingredients on an ingredient label, without question they will aggravate and be cruel to skin. Consequences include dryness, erosion of the surface of skin, and a strain on how skin replenishes, renews, and rejuvenates itself. Alcohol just weakens everything about skin.

There are other types of alcohols, known as fatty alcohols, which are non-irritating and can be exceptionally beneficial for skin. Examples you'll see on ingredient labels include cetyl, stearyl, and cetearyl alcohol. All of these are good ingredients for dry skin, and in small amounts fine for any skin type as they give a pleasing texture and help keep ingredients stable in products. It's important to discern these skin-friendly forms of alcohol from the problematic types of alcohol.

23. Is Retinyl Palmitate safe to use in sunscreen?

Retinyl Palmitate is a combination of retinol (pure vitamin A) and the fatty acid palmitic acid. Research has shown it to be an effective antioxidant when applied to skin. You may be surprised to learn that retinyl palmitate is found naturally in our skin, where it works as an antioxidant, particularly in regard to helping protect skin from UV light exposure—though it does not replace the need for sunscreen.

Reports that retinyl palmitate is not a safe ingredient are false. They're based on a study from nearly 20 years ago that has never been reproduced or tested under real-life conditions such as how people use sunscreens that contain this ingredient. In addition, to date, there is no scientific evidence that retinyl palmitate is a carcinogen in humans. The safety of retinyl palmitate is supported by several accredited organizations and their opinions are widely available online. If you still have concerns, we encourage you to research the topic further.

References for this information:

Journal of Biomedical Nanotechnology, February 2016, pages 394-403

Acta Biochimica Polonica, 2015, pages 201-206

Clinical Interventions in Aging, December 2006, pages 327-348

Journal of Investigative Dermatology, November 2003, pages 1163-1167

24. Do we include sunscreen in our Moisturisers?

Except for the Diminish Day which contains low levels of sunscreen (Titanium Dioxide), our moisturisers do not include sunscreens. Our moisturisers are both day and night creams and should be used in the morning and in the evening over treatment products. As a rule, sunscreen is meant to sit on the skin to act as a defence between your face and the sun. It doesn't penetrate the skin, because it's supposed to block out all those harmful UV rays. When it comes to moisturizers, on the other hand, the method of action is the opposite. Their very purpose is to penetrate the skin. Sunscreen is not an ingredient; it should be treated as a very important layer in your skin care routine and should always be applied last. The purpose of a sunscreen is to form a protection film on top of the skin to shield it.

Another reason why we do not have an SPF in our Moisturisers is due to it being a very strict regulated product. Tests need to be done to prove its effectiveness as a UVA and UVB protector. These regulations require a specific amount of SPF in order for it to be effective, leaving little room for other active ingredients in a formula. We rather opt to add antioxidants and other repairing and protective active ingredients to the Sunscreen to enhance the protective qualities of the Sunscreen.

Although the Moisturiser may say SPF 15 or 30 on the label, the amount you put on your face will not be enough to get that much coverage, and it will be diluted out by the moisturiser. So you will have a much lower effect of SPF on your skin.

Most importantly, when exposed to air and light, sunscreen becomes ineffective after a short period of time (about 90 – 120 minutes depending on the SPF factor). You need to reapply it if your skin is exposed to the sun. Due to the active ingredients in the Moisturisers you would not reapply this during the day.

25. Is Sknlogic safe to use during pregnancy?

Most Sknlogic products are safe to use during pregnancy, however there are certain ingredients that should be avoided during pregnancy and for this reason there are some products we do not recommend using during pregnancy. Before we jump into our list, we must point out that evidence-based data on the safety of specific products in pregnancy is limited as clinical trials on pregnant women that could even start to prove that certain ingredients are harmful are unethical. But some animal, anecdotal, or case-specific studies have shown some serious fetal effects related to a few common skin care ingredients. On this basis we err on the side of caution and that is the basis for our recommendations.

Ingredients to avoid:

Retinol – *Retinol 1 and Retinol 0.5 boosters.*

Salicylic Acid – Only in high doses so we recommend not to do a course of *Multipeel* while pregnant, and for the sake of remaining cautious to also discontinue use of the *Multi Active Lotion*. That said, lower-dose topical OTC products that contain salicylic acid have been reported safe by the American College of Obstetricians and Gynaecologists (ACOG).

Hydroquinone – Not included in any of our products.

Formaldehydes – Not included in our products – it is important to also look out for formaldehyde-releasing chemicals commonly found in cosmetics, none of which is found in our skincare.

Oxybenzone – Sunscreen, not used in our products.

Therefore the only products that should be avoided while pregnant from the Sknlogic range is the Retinol boosters, the Multipeel and Multi Active Lotion. As a therapist administering these treatment products would be safe as you wear gloves when applying the Multipeel and generally need to take care for the products not to touch the skin. When applying Retinol booster during treatments also take care to use gloves when applying this ingredient. When applying Retinol booster during treatments also take care to use gloves when applying this ingredient.