

Trend Product 2021



Brow Lamination Kit by RefectoCil

How to use – detailed step by step application

WOW brows in just 10 minutes



PREPARE – PERM – NEUTRALIZE – TINT – STYLE

1 PREPARE



Clean the brows using **RefectoCil Micellar Eye Make-Up Remover**. Use the **Saline Solution** to remove surfactants and any residual oil remaining on the skin. The skin and hairs must be dry before you begin the application process.



Use the rubber spoolie to brush through the eyebrows and comb them to the desired style.



Tip: Use **RefectoCil Eye Care Pads** for extra care during the treatment.

2 PERM



Apply **Lash & Brow Perm (1)** to the entire brow.



Start at the beginning of the brow and follow the direction that the eyebrows were brushed. Avoid the skin around the brows as much as possible and use a dry cotton bud to tidy up undesired edges. **Application time: 6 minutes.**



Remove **Lash & Brow Perm (1)** using a dry cotton bud or cotton pad. Follow the direction that the hairs were combed. Correct individual hairs, if necessary.

3 NEUTRALIZE



Apply **Neutralizer (2)** to the entire brow.



Start at the beginning of the brow and follow the direction that the eyebrows were brushed. Avoid the skin around the brows as much as possible and use a dry cotton bud to tidy up undesired edges. **Application time: 4 minutes.**



Remove **Neutralizer (2)** using a damp cotton pad. Then use **RefectoCil Saline Solution** to thoroughly clean the eyebrow area and completely remove any residue.

4 TINT



Dye the eyebrows using your selected **RefectoCil Eyebrow and Lash Dye**.



Apply the tint as usual.



Application time of just **3 minutes after Brow Lamination!**

5 CLEAN & STYLE



After removing the dye, use the rubber spoolie to return the eyebrows to the desired style. If necessary, use eyebrow scissors to trim any hairs that are too long.



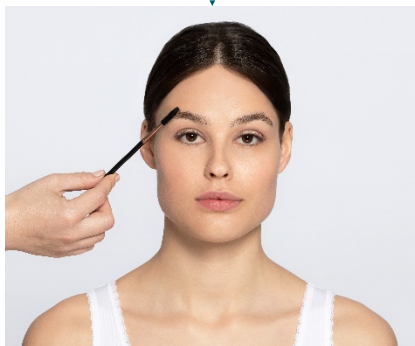
For optimal care, apply **RefectoCil Styling Gel** at the end.

For hygienic reasons, it is important not to use the same brush on all clients. Remove the styling gel from the tube with a clean RefectoCil brush and **apply it with the rubber spoolie.**

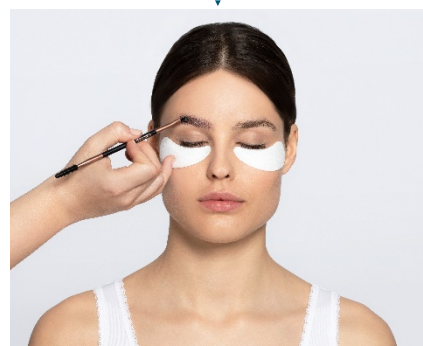
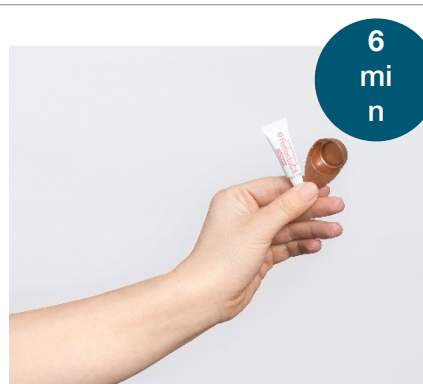


The result: **semi-permanent fuller looking brows.**

1. PREPARE



2. LASH&BROW PERM



3. NEUTRALIZER



4. TINT



5. CLEAN & STYLE



How many times can Brow Lamination be repeated?

The service can be repeated at any time when the effect weakens or after 4-6 weeks.

How safe is the treatment?

The treatment is absolutely safe! All products are specially developed for the eye area under the strictest guidelines and are very well tolerated. Make sure you adhere to the specified exposure times. Lash & Brow Perm also contains keratin, which has a nourishing and hair-strengthening effect.

What should be considered after the treatment?

After lamination, the eyebrows are malleable and still flexible. Therefore, the eyebrows should not come into contact with water or steam for 24 hours after the treatment. Mechanical movements such as rubbing or peeling, but also swimming and sauna should be avoided in the first 24 hours after the treatment. Your client should not apply eyebrow makeup or self-tanner to their face. Just brush the eyebrows into shape. After 24 hours, the shape is fixed and the customer can style the eyebrows as usual, wet them, etc. The sauna and swimming pool are no longer a problem either.

Can the eyebrows be coloured before lamination?

No. If tinted first, wait 24 hours before doing the eyebrow lift. Immediately after dyeing, the hair is still saturated with the dye mixture, so there is still plenty of hydrogen peroxide there. The Brow & Lash Perm is thus applied to already saturated hair and reacts with it. This creates an uneven corrugation. Colouring after eyebrow lifting is absolutely safe and recommended. Note the shorter exposure time.

Is Brow Lamination also suitable for thin and sparse eyebrows?

Even very thin eyebrows can appear fuller as a result of the treatment. The new shape of the brows make them appear longer and thicker.

Do the eyebrows need special care after use?

After the treatment, the RefectoCil Styling Gel provides perfect care and nourishes the hair. RefectoCil Care Balm is also recommended for home care. The rich formula strengthens the hair and makes it resistant. Caution: Apply Care Balm after 24 hours. The oily formula could weaken the result.

I want to lighten and laminate the eyebrows with Blonde Brow. Is that possible?

The eyebrows must be laminated first. Immediately afterwards, lightening with Blonde Brow is possible - but not recommended. If bleaching is done immediately after lamination, the eyebrows must first be thoroughly cleaned with Micellar Make-up Remover and Saline Solution. We recommend waiting 24 hours after laminating before bleaching.

Can I use RefectoCil Brow Lamination on pregnant customers?

In general we see no problem with using it during pregnancy. We have no information on negative effects of using it during pregnancy. Please note, however, that we have not conducted any specific studies with pregnant women. In addition, as a manufacturer, we do not have the necessary medical knowledge. We recommend consulting a doctor before use.

Is RefectoCil Brow Lamination vegan?

Yes, the products are vegan, as they do not contain any raw materials of animal origin.

Are RefectoCil products tested on animals?

No. All of our products are developed and tested in accordance with the regulations of the EU cosmetics regulation without exception without animal testing.

Where are the RefectoCil products manufactured?

The products are produced in Austria.