



Eyelash Curl by RefectoCil

How to use – detailed step by step guide

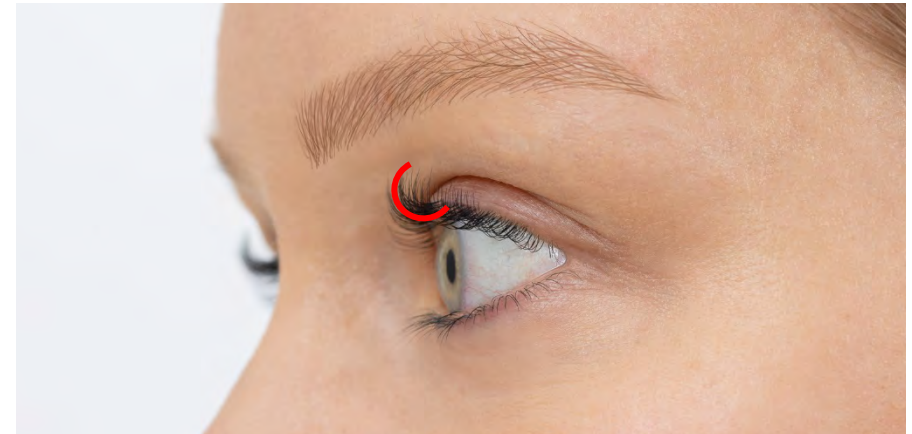
Curled Eyelashes with Eyelash Curl

Perfect curl, expressive look!

RefectoCil Eyelash Curl and lets the eyes appear bigger due to the curling-effect.



The difference between Eyelash Lift & Eyelash Curl



Eyelash Lift	Eyelash Curl
Method: The eyelashes are fixed in a flat and upwards way on the lifting pad. The result is a straight lifting of the eyelashes.	Method: The eyelashes are applied in a curled way to the round eyelash roller. A crescent moon-shaped swing is created
Result: Significantly longer and fuller looking eyelashes. Replaces eyelash extensions. A slight curl is created, but not as strong as with Eyelash Curl.	Result: Evenly curved eyelashes. Replaces the mechanical eyelash curlers. No optical extension of the eyelashes.
Can be applied to all eyelash lengths	Best result for medium-long- to very long eyelashes
Lasts up to 6 weeks	Lasts up to 6 weeks
Duration of application: 13 minutes	Duration of application: 13 minutes

1 PREPARATION



First, **remove contact lenses**. Then **cleanse** the eye area with **RefectoCil Micellar Eye Make-up Remover**.



Then degrease the eyelids and eyelashes with **RefectoCil Saline Solution**.

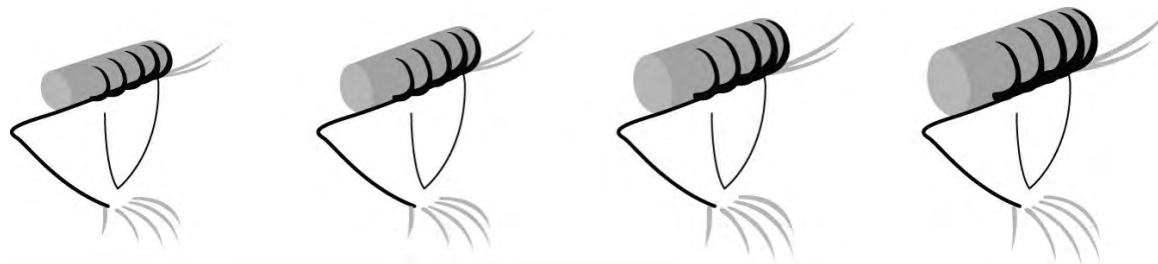


To make it easier, you can place the **RefectoCil Eye Care Pads on the lower lashes to cover them**. This way you ensure that you only fix the upper lashes on the lash roller later. Alternatively use the **RefectoCil Silicone Pads** or **RefectoCil Eye Protection Paper** under the eye.

2 SELECT ROLLERS

The shorter the lashes and the stronger the curl desired by the customer, the smaller the roller size you should choose.

- **Small eyelash rollers (S):** for short eyelashes.
- **Medium eyelash rollers (M):** for medium-length eyelashes
- **Large lash rollers (L):** for long lashes
- **Very large eyelash curlers (XL):** for very long eyelashes



Tips for choosing the right size:

- You have chosen the right roller when the lashes cover half the circumference of the roller.
- If the chosen roller is too small and the lashes too long, the result will be a U-shaped curl.
- If the chosen roller is too big and the lashes too short, there will be no or too weak a curl.

3 FIXING ROLLERS & EYELASHES



By **bending the eyelash** roller several times, you bring it into a **shape that corresponds to the curvature of the eyelid**.

From now until the end of the treatment, the client must keep her eyes closed!



Stretch the eyelid with your fingers and place the eyelash curler first on the inner edge of the eyelid, **as close as possible to the base of the lashes**. Then place the other end of the eyelash roller on the outer edge of the eyelid and fix the roller along the eyelid with gentle pressure.



Fix the upper lashes on the lash roller with the rosewood stick/lash lifter. Use a **rotating upward motion** to print the lashes evenly and straight onto the self-adhesive lash roller. **If individual eyelashes stick crossed on the eyelash roller, you have to loosen them carefully and then fix them straight.**

4 LASHPERM



If the lashes are unruly, apply a little **RefectoCil Glue** to the lash roll and fix the lashes again. When all the lashes are just attached to the lash roller, ask the client to open her eyes briefly. This way you can see if any eyelashes from the lower lid are accidentally stuck on the eyelash roll. If so, loosen them carefully with the rosewood stick/ lash lifter, because **only the upper lashes should be curled.**



Put a **pea-sized amount of RefectoCil Lashperm 1** into the **RefectoCil cosmetic bowl 1.**

Using the RefectoCil Cosmetic Brush 1, apply a strip of Lashperm 1 saturated in the **middle area of the lashes**, where the curl is to be created.

Application time: 8 minutes.



After the application time, dab **Lashperm 1** with a **dry cotton swab.**

5 NEUTRALIZER



Put a **pea-sized amount of RefectoCil Neutralizer 2** into the **RefectoCil Cosmetic Tray 2**. Using the **RefectoCil Cosmetic Brush 2**, apply a strip of **Neutralizer 2** generously to the same area where **Lashperm 1** was applied.

Application time: 5 minutes.



After the exposure time, dab **Neutralizer 2** with a **dry cotton swab**.



Run a damp cotton pad over the lash roller several times, the moisture will loosen the glue. Stretch the eyelid and carefully unroll the eyelash roller downwards.

6 COLOURATION & AFTERCARE



Then tint the eyelashes with **RefectoCil eyebrow and eyelash tints**. Please note: After using Eyelash Curl, the application time for eyelash tinting is shortened to only **2 minutes!**



Remove the eyelash tint as usual.



For optimal care, apply **RefectoCil Styling Gel** at the end.

For hygienic reasons, it is important not to use the same brush on all clients. Remove the styling gel from the tube with a clean RefectoCil brush and **apply it with the rubber spoolie.**

1. PREPARATION

2. FIX EYELASHES

3. LASHPERM

4. NEUTRALIZER

5. COLOURATION & AFTERCARE



How often can Eyelash Curl be repeated?

The service can be repeated at any time if the effect weakens and wears off or after 4-6 weeks.

How safe is the treatment?

The treatment is absolutely safe! All products are developed under strict guidelines especially for the eye area and are very well tolerated. Be sure to follow the specified application times. In addition, the Lashperm contained in Eyelash Curl contains care components such as collagen and cysteine, which nourish the hair during the treatment.

What should be observed after the treatment?

After curling the eyelashes are still somewhat flexible. Therefore, they should not come into contact with water or steam for 24 hours after the treatment. Mechanical movements such as strong rubbing, but also swimming and taking a sauna should be avoided for the first 24 hours after the treatment. Your client should not apply mascara. After 24 hours the shape is fixed and the client can style, wet etc. the lashes as usual. Even sauna and swimming pool are no longer a problem.

Do the lashes need special care after the application?

After the treatment, RefectoCil Styling Gel provides the perfect care and nourishes the hair. For home care, RefectoCil Care Balm is also recommended. The rich formula strengthens the hair and makes it resistant. Attention: Apply Care Balm only after 24 hours. The oily formula could weaken the result.

Does the treatment also work on short lashes?

Lash Curling is especially suitable for long lashes. For short lashes we recommend RefectoCil Eyelash Lift. See next question.

What is the difference to Eyelash Lift?

With Eyelash Curl, the eyelashes are wrapped over and fixed to a roller. In this way they are curved but not visually lengthened. With Eyelash Lift, the lashes are fixed to a pad to create the lift effect. This way, the lashes are visually lengthened.

Can the client use mascara despite Eyelash Curl?

Yes, mascara can be applied 24 hours after the application. The mascara enhances the curl effect. We do not recommend using waterproof mascara, as heavy cleansing with oil-based products can affect the durability and health of the lashes.

Can I use RefectoCil Eyelash Curl on pregnant clients?

In general, we do not see any problem with using RefectoCil Eyelash Curl during pregnancy. We have no information on negative effects from use during pregnancy. Please note, however, that we have not conducted any specific studies with pregnant women. Furthermore, as a manufacturing company, we do not have the necessary medical knowledge. We recommend consulting your doctor before use.

What can I do if the curl is too strong or too weak?

If the curl is too strong, simply take a larger lash roll and repeat the application at half the application time. If the curl is too weak, make sure the eye area is thoroughly cleaned and free of debris and that the lash roller is the right size. If the roller was too large, simply repeat the application with a smaller one at half the application time.

How much RefectoCil Glue do I need to fix the lashes?

A thin strip of RefectoCil Glue is absolutely sufficient. Wait a short time after application, because the glue only develops its adhesive power after it has dried slightly. Then fix it with the rosewood stick/lash lifter. If the lashes do not stay fixed, apply more Glue now.

The rollers do not stick well to the eyelid. What can I do?

Simply bend the roll into a U-shape several times before application to make it pliable. Only touch the ends to prevent the self-adhesive glue from coming off.

How do I achieve an even result?

To do this, the eye area must be cleaned, free of residue and degreased. The lashes must be straight and nicely fixed on the lash roller, without kinks and not crossed. The tips should lie straight on the roller.

In which area of the lashes do I apply the Lashperm & Neutralizer solution?

Starting from the middle part of the lashes to the lower part. The tips should be left uncovered.

Why is it not necessary to apply the active ingredients to the entire lash?

It is a chemical process that takes place inside the hair.

Even if Lashperm and Neutralizer are only applied to the lower part of the lash, they will penetrate the entire hair evenly.

Is RefectoCil Eyelash Curl vegan?

No. RefectoCil Eyelash Lift contains Hydrolyzed Collagen.

Are RefectoCil products tested on animals?

No. All our products are developed and tested without animal testing in accordance with the EU Cosmetics Directive.

Where are RefectoCil products manufactured?

The products are manufactured in Austria.

