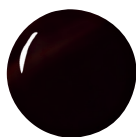


82 Super Shades



Deep Abyss
Crème / 80288



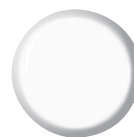
Aubergine
Crème / 80280



Shining Armor
Glitter / 80141



Sparkling Mist
Glitter / 80301



Clean Linens
Crème / 80286



Paris Rose
Crème / 80294



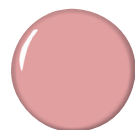
Pirouette
Crème / 81405



Berry Shake
Crème / 80109



Bermuda Shell
Shimmer / 81406



Cupids Arrow
Crème / 80158



Pink Porcelain
Crème / 80156



Hibiscus Petal
Shimmer / 80163



Pink Cupcake
Crème / 80110



Pouty Princess
Neon / 81404



Tahiti Time
Neon / 81413



Electric Pink
Neon / 80289



Cactus Flower
Neon / 80283



Pink Dahlia
Crème / 80295



Lipstick Kisses
Crème / 81408



Moroccan Market
Shimmer / 81423



Purple Orchid
Neon / 80148



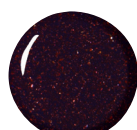
Lavender Bouquet
Crème / 80150



Gargoyle
Crème / 80290



Purple Plume
Crème / 80118



City Lights
Glitter / 80121



Lunar Eclipse
Shimmer / 81402



Royal Peacock
Neon / 80152



Sea Foam
Crème / 80298



Busy Bee
Neon / 81416



Chickadee
Crème / 80151



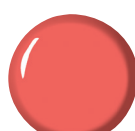
Trophy Cup
Glitter / 80102



Creamy Nude
Crème / 80287



Toasted Marshmallow
Crème / 80159



Cameo Coral
Crème / 80112



Italian Melon
Crème / 80111



Summer Crush
Neon / 80142



Mango Tango
Crème / 81411



Aloha Punch
Shimmer / 80113



Savannah Sunset
Neon / 80143



Chili Pepper
Crème / 80144



Velvet Rope
Crème / 80145



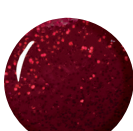
Poppy
Shimmer / 80297



Ladybug
Crème / 80292



Vineyard
Crème / 80115



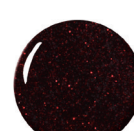
Flaming Poker
Glitter / 80303



Roman Red
Shimmer / 80120



Napa Harvest
Crème / 80147



Magic Spell
Glitter / 80164

Collections



Sweet Frosting
Shimmer / 81449



Sugar Cookie
Glitter / 81450



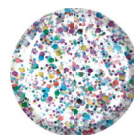
Minty Chip
Neon / 81451



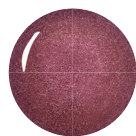
Mango Mousse
Neon / 81452



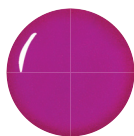
Sweet as Pie
Crème / 81453



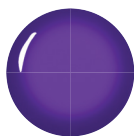
Confetti Cake
Glitter / 81454



Royal & Rare
Shimmer / 81600



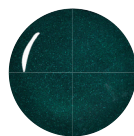
Fit for a Queen
Shimmer / 81601



Her Majesty
Crème / 81602



Imperial Knights
Crème / 81603



Emerald Empress
Shimmer / 81604



Reign of Riches
Shimmer / 81605



Beachcomber
Crème / 81909



Summer Fling
Crème / 81910



Lifeguard on Duty
Crème / 81911



Dreamside Creamsicle
Crème / 81912



Shore Break
Shimmer / 81913



Sea Breeze
Crème / 81914



Bikini Bottoms
Shimmer / 81915



Paint Me Some Sun
Crème / 81916



Grunged Groupie
Shimmer / 82200



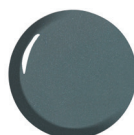
Miss Mischief
Shimmer / 82201



Secret Scene
Crème / 82202



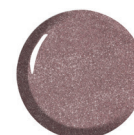
Nirvana Nights
Shimmer / 82203



Teal Dawn
Shimmer / 82204



Rebel & Romance
Shimmer / 82205



Amped
Shimmer / 82206



Velvet Underground
Glitter / 82207



Mint Me In Maui
Crème / 81964



Lickity Lime
Crème / 81965



Orange You Hawt
Crème / 81966



Magenta Me Wild
Crème / 81967



Frozen Grapes
Crème / 81968



Water You Doin?
Crème / 81969

Super simple application



1 Perform a dry manicure. Then remove shine from the natural nail with a 240 grit buffing block.



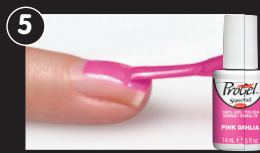
2 Apply SuperNail SuperBond to nail & let dry. Note: Nail will remain sticky when dry.



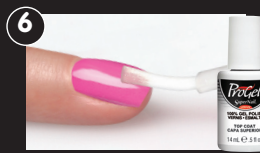
3 Apply a thin coat of ProGel Base Coat.



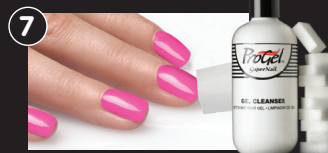
4 Cure under LED lamp for 30 seconds or cure under UV lamp for 1 minute.



5 Apply a thin first coat of ProGel Polish Color. Cure under LED lamp for 30 seconds or cure under UV lamp for 2 minutes. Repeat the process for a second coat.



6 Apply a thin coat of ProGel Top Coat. Cure under LED lamp for 30 seconds or cure under UV lamp for 2 minutes.



7 Saturate a nail wipe with ProGel Gel Cleanser or 91% Isopropyl alcohol and wipe nail to remove tacky residue.

Super easy removal



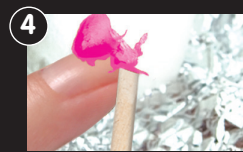
1 With a nail file, break the seal of the gel nail.



2 Saturate a nail remover wrap with ProGel Gel Remover or acetone, then wrap securely around nail.



3 Allow to penetrate for 10 minutes.



4 Use an orangewood stick or a cuticle pusher to gently loosen and remove gel.