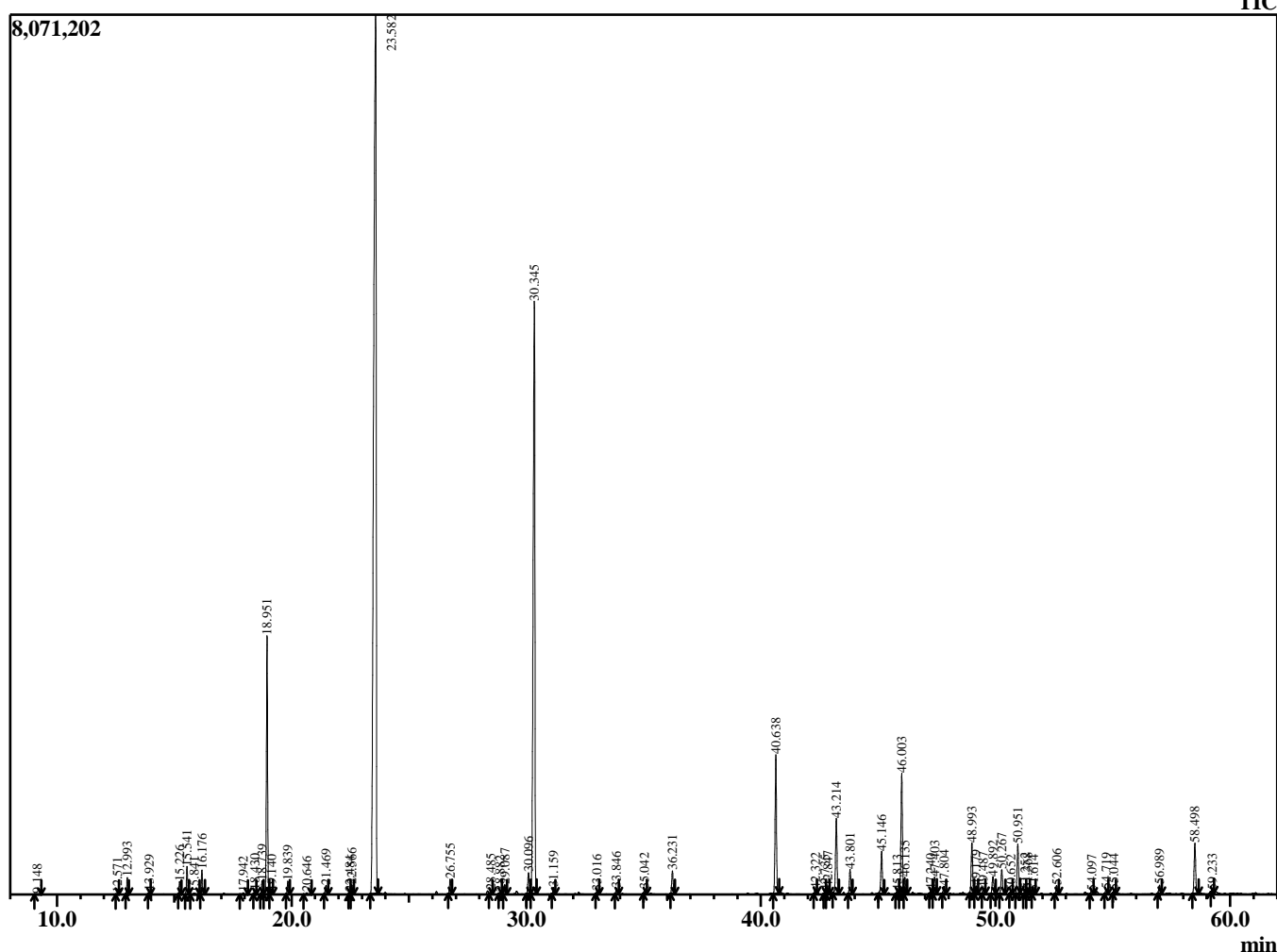


Sample Information

Analyzed by : Dr. Robert S. Pappas  
 Analyzed : 5/27/2017 12:02:09 PM  
 Sample Type : Essential Oil  
 Sample Name : EOA Basil  
 Sample ID : BAS052517  
 Injection Volume : 0.30



Chromatogram EOA Basil Lot BAS052517



R.Time	Name	Area%
9.148	Hexenol <3Z>	0.02
12.571	Thujene <alpha->	0.02
12.993	Pinene <alpha->	0.35
13.929	Camphene	0.07
15.226	Sabinene	0.28
15.541	Pinene <beta->	0.63
15.841	Hept-5-en-2-one <6-methyl->	0.05
16.176	Myrcene	0.56
17.942	Terpinene <alpha->	0.04
18.430	Cymene <para->	0.10
18.739	Limonene	0.33
18.951	1,8-Cineole	6.41
19.140	Ocimene <Z-beta>	0.06
19.839	Ocimene <E-beta>	0.31
20.646	Terpinene <gamma->	0.04
21.469	Sabinene hydrate <trans>	0.28
22.484	Terpinolene	0.05
22.566	Linalool oxide <trans-(furanoid)>	0.25
23.582	Linalool	45.29
26.755	Camphor	0.39
28.485	Borneol	0.11
28.882	Menthol	0.06
29.087	Terpinen-4-ol	0.26
30.096	Terpineol <alpha->	0.62
30.345	Estragole <E>	20.83
31.159	Octyl acetate	0.18
33.016	Neral	0.07
33.846	Geraniol	0.17
35.042	Geranial	0.11
36.231	Bornyl acetate	0.67
40.638	Eugenol	3.93
42.322	Copaene <alpha->	0.13
42.735	Elemene isomer	0.07
42.847	Bourbonene <beta->	0.19
43.214	Elemene <beta->	2.28
43.801	Methyleugenol	0.69
45.146	Caryophyllene <trans>	1.33
45.813	Gurjunene <beta->	0.09
46.003	Bergamotene <trans-alpha->	3.75
46.135	Guaiene <alpha->	0.49
47.240	Farnesene <Z-beta>	0.08
47.403	Humulene <alpha->	0.48
47.804	Cadina-1(6),4-diene <trans>	0.22
48.993	Germacrene D	1.51
49.179	Farnesene isomer	0.23
49.487	Selinene <beta->	0.15
49.892	Bicyclgermacrene	0.61
50.267	Bulnesene <alpha->	0.75
50.652	Bisabolene <beta->	0.06
50.951	Cadinene <gamma->	1.49
51.252	Cadinene <delta->	0.12
51.368	Calamenene <cis>	0.15
51.614	Sesquiphellandrene <beta->	0.09
52.606	Bisabolene isomer	0.25
54.097	Cinnamaldehyde <p-methoxy>	0.11
54.719	Spathulenol	0.14

Comments:

The analysis of this Basil batch sample meets the expected chemical profile for authentic essential oil of *Ocimum basicicum*. No contamination or adulteration was detected.

R.Time	Name	Area%
55.044	Caryophyllene oxide	0.08
56.989	Unidentified sesquiterpenol	0.27
58.498	Cadinol <epi-alpha>	1.58
59.233	Cadinol <alpha>	0.07
		100.00