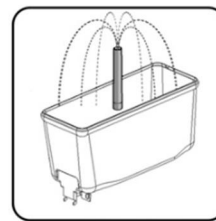


ARCTIC DELUXE

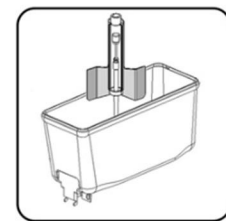
The Arctic Deluxe range includes models with 1 to 4 bowls with 12 or 20 litre capacity, made in shockproof, food grade polycarbonate. Simple, easy to use and versatile, these dispensers are designed to cool all types of drink (natural fruit juices, coffee, tea, almond milk, etc.). Quick and easy to dismantle for perfect cleaning, they save your time and make your work easier.



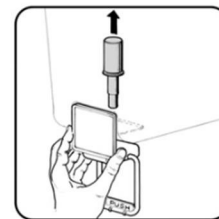
Technical Characteristics	Deluxe 20L
Transparent removable bowls	2
Capacity of each bowl	12/20 l
Width	14.5"
Depth	18.5"
Height	26.5"
Net Weight	57 lbs.
Other Technical Features	
~ Unibody stainless steel construction	
~ Food-grade bowls and faucets easily removable	
~ Drink stirring by magnetic impeller	
~ Hermetically sealed compressor	
~ Noise level lower than 70 dB (A)	
~ 115V / 60Hz	



"P" spray pump



"AA" mixing system



gravity faucet

Specialty Beverage Solutions

The right solutions to grow your business.

toll free: 1-888-805.5528 | fax: 1-888-805-5541 | email: sales@SBSolutions.ca | www.sbsolutions.ca