

INSTALL GUIDE

SWING OPTIX®

for EYEXO Users



UNEKOR

POWER FOR EVERY GOLFER



CONTENTS

TABLE OF

0.1	INCLUDED ITEMS	<u>PAGE</u> 3
0.2	CAMERA INSTALLATION	<u>PAGE</u> 4
0.3	SOFTWARE INSTALL	<u>PAGE</u> 6
0.4	MVS DRIVER	<u>PAGE</u> 7
0.5	LICENSE AND ACTIVATION	<u>PAGE</u> 8
0.6	LIGHTING ENVIRONMENT	<u>PAGE</u> 9
0.7	SWING OPTIX CONFIGURATION	<u>PAGE</u> 11



0.1 INCLUDED ITEMS

The following items are included in the package. Please make sure they are all present and accounted for.

USB 3.0 CABLE (2)



CAMERA (2)



CAMERA LENSE (2)



ACCESSORIES (2 sets)



NOTE:
If any part is missing,
please contact support.

0.2 CAMERA INSTALLATION

STEP ONE

Please find the camera, bracket, and the 4 screws that came with the package.

STEP TWO

Screw in the 4 screws through the bracket onto the camera.

STEP THREE

Attach the camera with the bracket to the tri pod stand. The camera will need to be rotated 90 degrees as shown in the photo. Attach the USB 3.0 power cable to the camera. It is recommended to tie the USB 3.0 power cable to one of the legs of the tri pod.

STEP FOUR

Connect the other end of the USB 3.0 power cable directly to a USB 3.0 port on your PC. Please confirm you see the light blinking next to the "Power" text on the cameras.

NOTE:

The cameras will heat up to 43 - 46 degree Celcius. This is normal operating temp.

STEP ONE



STEP TWO



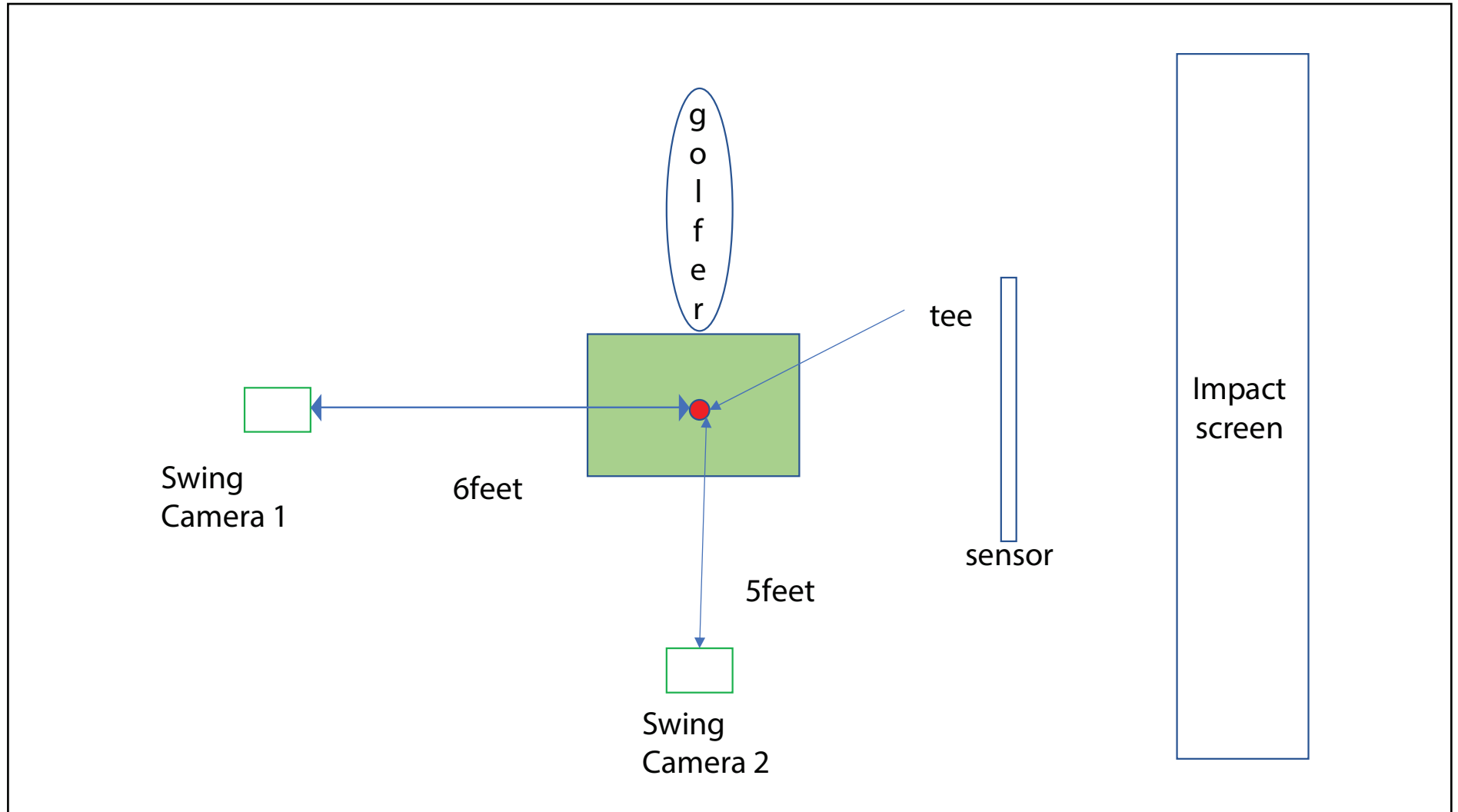
STEP THREE



STEP FOUR



0.2 CAMERA INSTALLATION



0.3 SOFTWARE INSTALL

STEP ONE

The MVS camera driver gets automatically installed when you go through the first time setup of the View software. The View setup file is in the USB flash drive that came with the unit.

STEP TWO

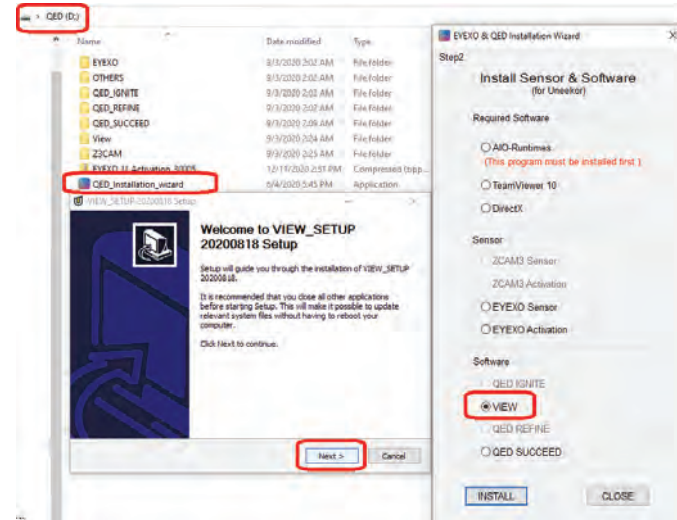
In the next window, make sure the "Destination Folder" is selected to "C:\View" and then click "NEXT>".

Once all the View files are installed, the "MVS" driver installer See next page for steps.

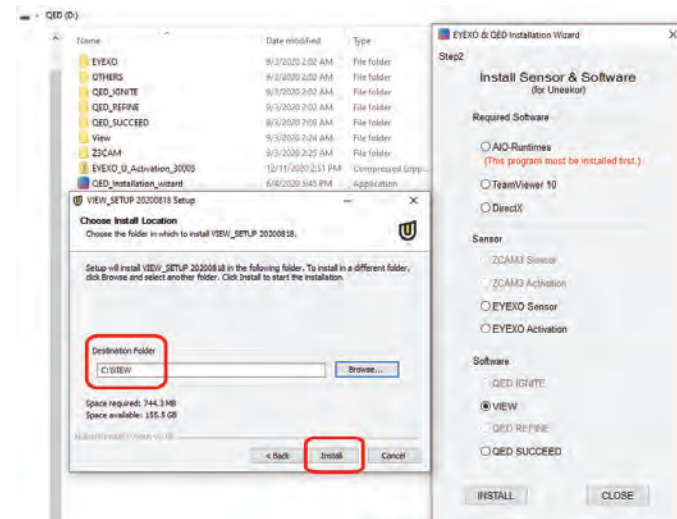
Install Link:

<https://bit.ly/support-view>

STEP ONE



STEP TWO



0.4 MVS DRIVER

STEP ONE

Once the MVS Driver setup window appears, click the “Start Setup” button to proceed.

STEP TWO

In the options window, confirm “C:\Program Files (x86)\MVS” is shown in the “Directory” and the other options are all checked. Then click the “Next” button.

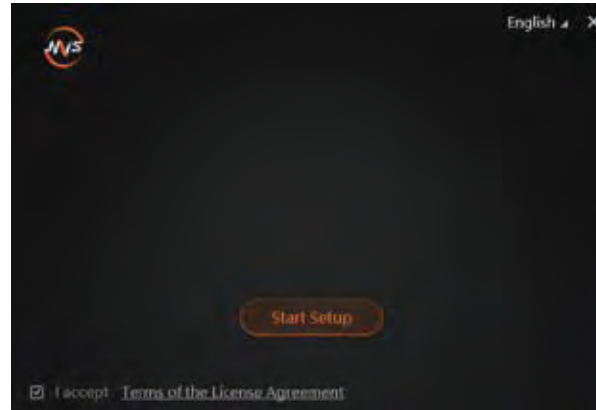
STEP THREE

The driver installation is initiated. Please wait several minutes for this process.

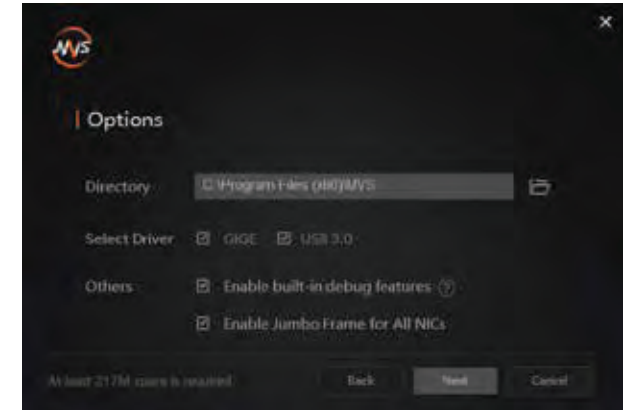
STEP FOUR

Once the installation process is complete, uncheck the “Run the Client” box and click “Finish.”

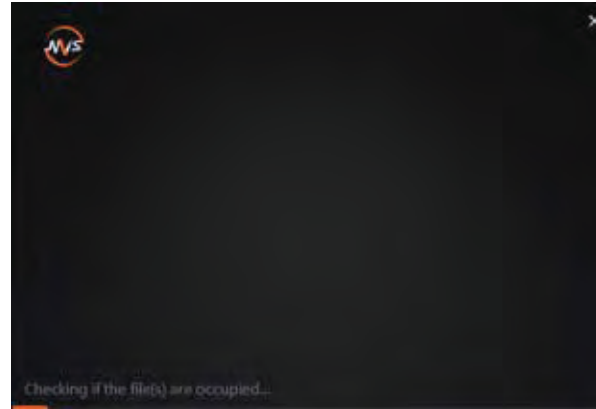
STEP ONE



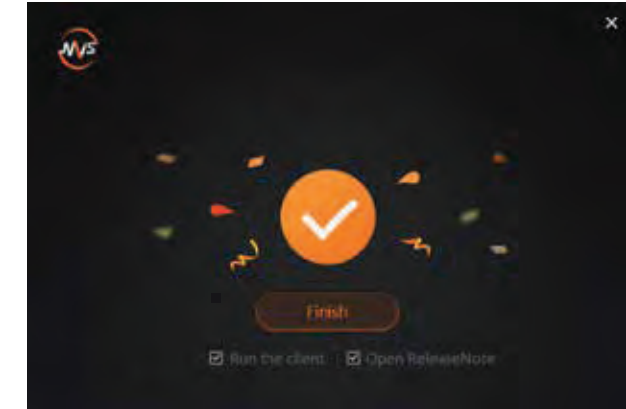
STEP TWO



STEP THREE



STEP FOUR



0.5 LICENSE AND ACTIVATION

STEP ONE

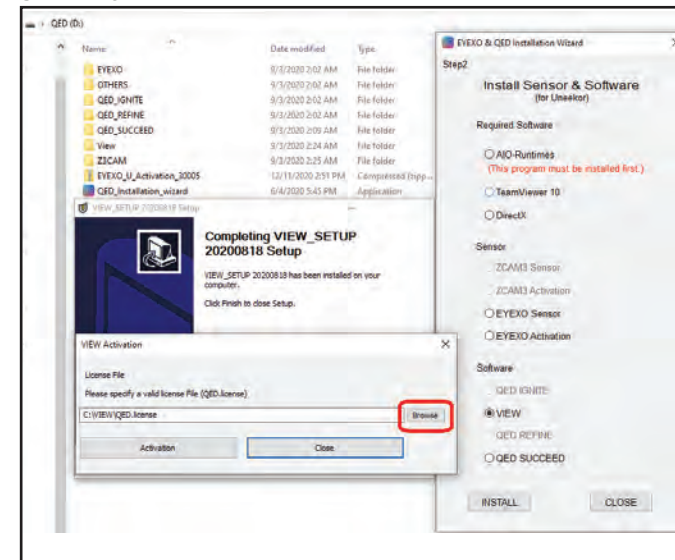
You will need to click the “Browse” button and search for the QED_30000XXXX license key file (you will receive the license key file along with tracking number after purchase).

STEP TWO

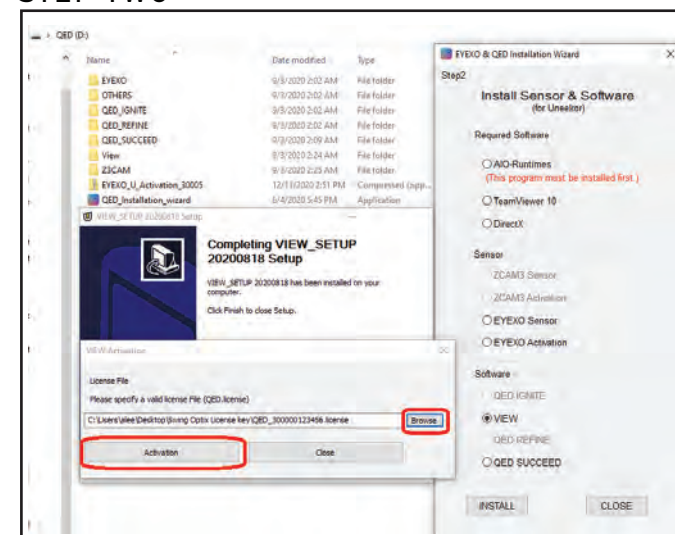
Once the license file has been found, click open and then click the “Activation” button to activate your license key. Please wait for the “Success” message for the activation to be complete.

NOTE:
It is important to have internet access for the Activation process.

STEP ONE



STEP TWO



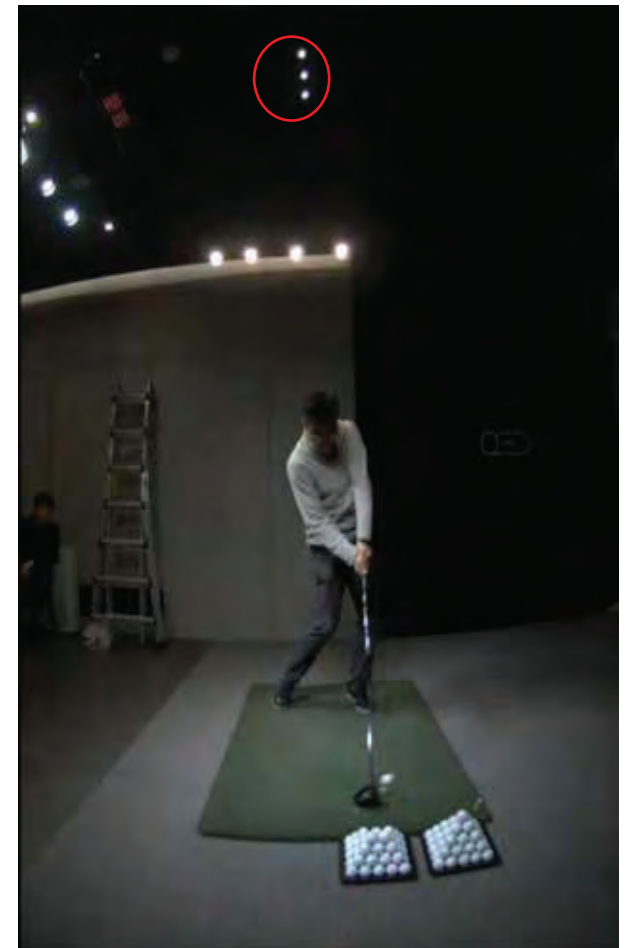
0.6 LIGHTING ENVIRONMENT

Besides your normal background room lighting, additional lighting is required to optimize the Swing Optix. It is recommended to add a minimum of 8 15W or higher, non flickering LED light bulbs on a track rail with fixtures. This will help with exposure and eliminating blurring of the club.

Ex: 11 non flickering LEDs were used in the environment below.



NOTE:
It is important to angle the light fixtures away from the projector light path.



0.6.1 LIGHT ENVIRONMENT

LED Bulb Recommendations

#	Brand	Where to Buy?	Model	LED Wattage	Wattage Rep.	Lumens	Light Appear.	Dimmable
1	Philips	Amazon	5967531U0	8.5W	65W	750	2700K	Y
2	Philips	Amazon	9290023277	8.5W	60W	800	2700K	Y
3	Philips	Amazon	9290011531A	7W	N/A	500	2700K	Y
4	Philips	Amazon	9290013221	10W	75W	850	3000K	Y
5	Touchstar	Amazon	PAR30S	12W	75W	840	3000K	Y

Note: The LED bulbs on this list have been tested with Uneekor Swing Optix cameras under a 15' x 10' enclosure using Uneekor QED and EYE XO hardware. These bulbs demonstrated minimal flickering during operation to not impede Swing Optix cameras performance. If you're still experiencing issues with the selected bulbs on this list, please contact support@uneekor.com for further assistance. Thank you.

Projectors

The following compatible projectors have been approved by Uneekor to function properly with Swing Optix cameras. If you experience issues with the selected projector(s) on this list, please contact support@uneekor.com for further assistance. Thank you.

Compatible Models	Type	Lumens	Throw Ratio
Panasonic PT-VZ590U	WUXGA 3LCD	5000	1.09 - 1.77:1

NOT Compatible

BenQ MH530FHD

BenQ LK953ST

BenQ LK953ST

Optoma ZU606TST-W

ViewSonic PR08800WUL



0.7 SWING OPTIX CONFIGURATION

STEP ONE

Open the View software. Proceed onto the main home screen of the View software.

STEP TWO

Click on the “Swing” tab in the navigation column on the left side.

STEP THREE

Inside the “Swing” tab, click on the “Settings” button on the top right of the screen. Next, click on the “Optix” tab to open the Swing Optix cameras.

STEP FOUR

You can make adjustments to the camera's Exposure, Gamma, Brightness, and Contrast in this menu. This is dependent on your lighting environment.

You are now finished.

STEP ONE



STEP TWO



STEP THREE



STEP FOUR



POWER FOR EVERY GOLFER

Uneekor, Inc.

26249 Enterprise Court
Lake Forest, CA 92630

Tel: 1-949-328-7790

sales@uneekor.com

support@uneekor.com